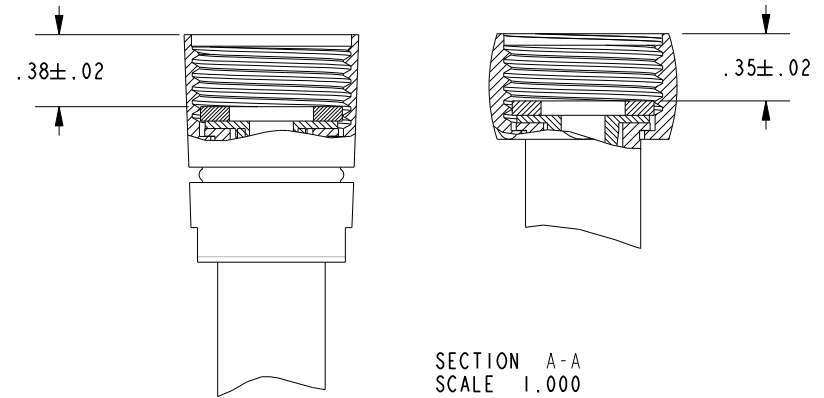
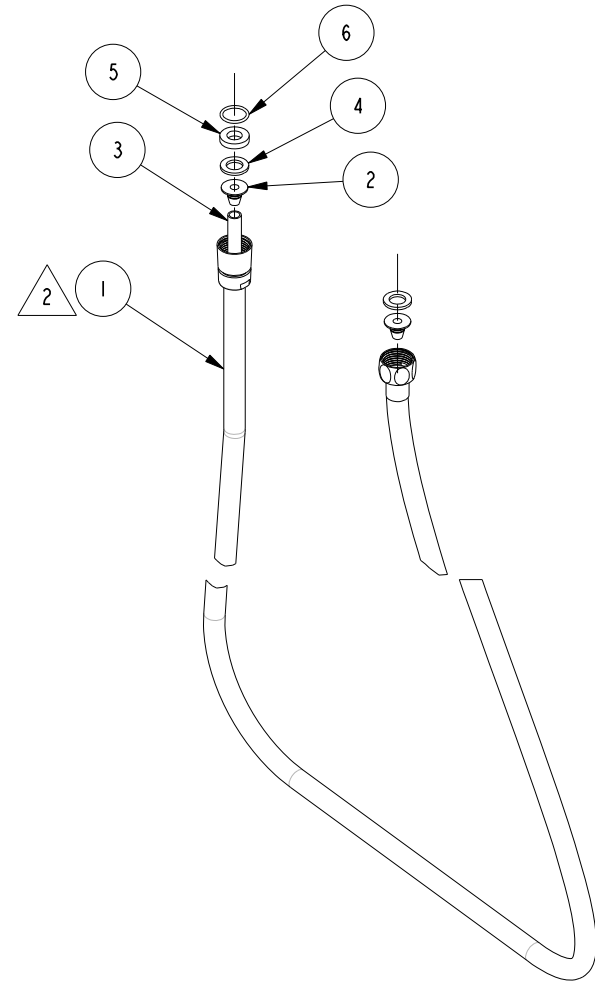


NOTES:

- 1. FIT / FORM / FUNCTION SHALL FOLLOW PS-E.008.
- 2. HOSE APPROX. 59" IN LENGTH.
- 3. AN ALTERNATIVE TO USING 91187 IS TO PACK 3 PIECES OF 91153.



BILL OF MATERIAL (CURRENT LEVEL)

ITEM	PT/ASSY	DESCRIPTION	TYPE	QTY.
1	50993	SHOWER HOSE	ASSEMBLY	1
2	50992	HOSE INSERT, BARBED	PART	2
3	91683	INNER TUBE, PVC	PART	1
4	91153	WSHR, .438 ID X .738 OD X .075 THK, FLT, EPDM	PART	2
5	91187	WSHR, .40 ID X .77 OD X .16 THK, FLT, RUBBER	PART	1
6	91020	O-RING, #2-016, EPDM, 65-75 DURO, NSF 61	PART	1

TESTING	-	-	-
ASSEMBLY	-	-	-
PLATING	-	-	-
POLISHING	-	NEXT ASSY	USED ON
MACHINING	-	APPLICATION	
TOOLING	FIXTURE #	REMOVE ALL BURRS AND SHARP EDGES	

UNITS ARE: INCHES [MM]  
 TOLERANCES ARE:  
 FRACTIONS DECIMALS ANGLES  
 $\pm 1/16"$   $.X \pm .1$  [2,5]  $\pm 1^\circ$   
 $.XX \pm .06$  [1,3]  
 (X.XXX) DENOTES CRITICAL DIMS.  
 ALL THREADS ARE CRITICAL

**BRASSTECH** 2001 CARNEGIE AVE.  
 INCORPORATED SANTA ANA, CA 92705  
 (949) 417-5207

59 IN. SPIRAL SHOWER HOSE

DWG NO. 284

SCALE .200 REF. - SHEET | OF |

ZONE	REV	DESCRIPTION	DATE	APPROVED
-	F	EN-2903	06/15/15	V.V.
-	E	EN-2596	09/04/13	V.V.
-	D	EN-1647	10/13/10	V.V.

COPYRIGHT 2005 BRASSTECH, INC.  
 THESE DRAWINGS AND THE DESIGNS  
 DEPICTED HEREIN ARE THE PROPRIETARY  
 PROPERTY OF BRASSTECH. ANY USE  
 OR REPRODUCTION IS SUBJECT TO  
 THE EXPRESS APPROVAL OF BRASSTECH.  
 UNAUTHORIZED USE IS STRICTLY  
 PROHIBITED. ALL RIGHTS RESERVED.