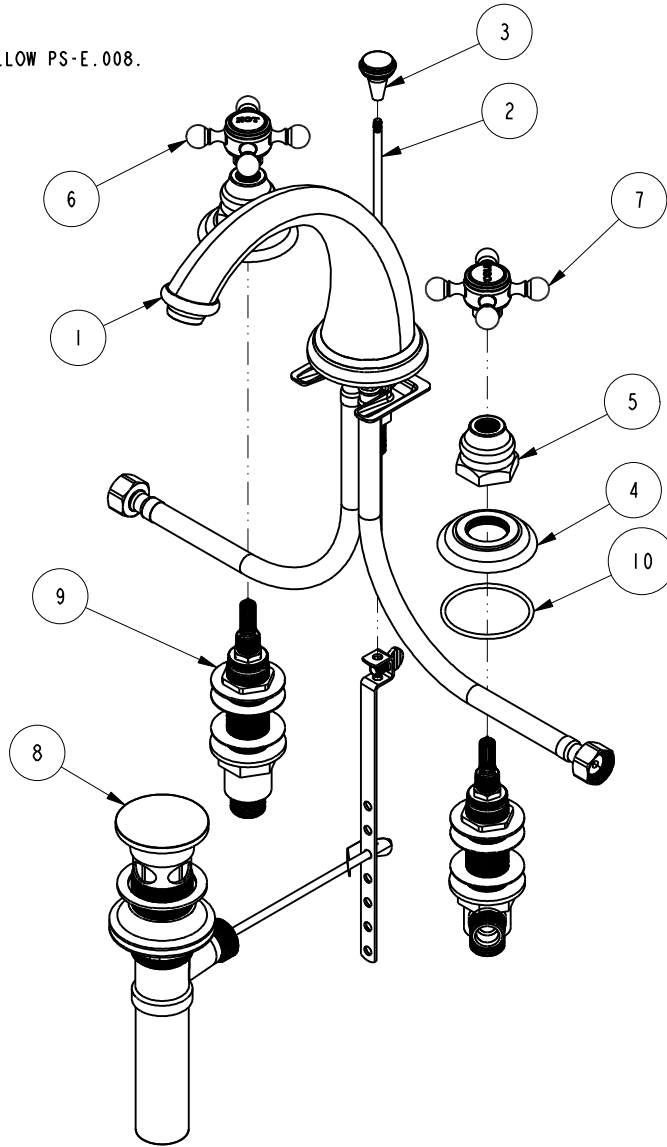


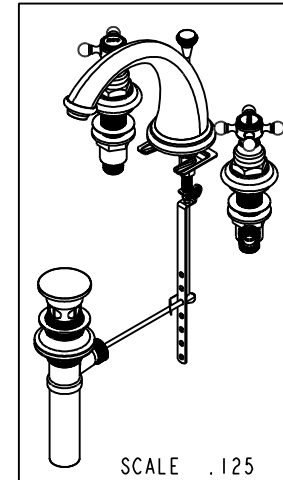
NOTES:

(N1) 1. FIT / FORM / FUNCTION SHALL FOLLOW PS-E.008.



BILL OF MATERIAL (CURRENT LEVEL)

ITEM	PT/ASSY	DESCRIPTION	TYPE	QTY.
1	3-348	W/S SPOUT ASM	ASSEMBLY	1
2	10288	3/16" POP UP ROD	PART	1
3	10021	POP-UP KNOB	PART	1
4	10048	ESCUTCHEON W/S VALVE	PART	2
5	10523	HEX ESCUTCHEON BONNET	PART	2
6	2-141	HANDLE ONLY, HOT	ASSEMBLY	1
7	2-142	HANDLE ONLY, COLD	ASSEMBLY	1
8	325	POP UP ASSEMBLY	ASSEMBLY	1
9	1-525.900	W/S VALVE ASM	ASSEMBLY	1
10	91231	O-RING, #2-136, EPDM, 65-75 DURO	PART	2



-	D	EN-3371	08/04/17	J.M
-	C	EN-2334	12/18/12	-
-	B	EN-1616	09/13/10	-
-	A	EO-1018	06/10/08	-
-	-	RELEASED	2000	-
ZONE	REV	DESCRIPTION	DATE	APPROVED

COPYRIGHT 2005 BRASSTECH, INC. THESE DRAWINGS AND THE DESIGNS DEPICTED HEREIN ARE THE PROPRIETARY PROPERTY OF BRASSTECH. ANY USE OR REPRODUCTION IS SUBJECT TO THE EXPRESS APPROVAL OF BRASSTECH. UNAUTHORIZED USE IS STRICTLY PROHIBITED. ALL RIGHTS RESERVED.

TESTING	-	-	-
ASSEMBLY	-	-	-
PLATING	-	-	-
POLISHING	-	NEXT ASSY	USED ON
MACHINING	-	APPLICATION	
TOOLING	FIXTURE #	REMOVE ALL BURRS AND SHARP EDGES	

UNITS ARE: INCHES [MM]
TOLERANCES ARE:
FRACTIONS DECIMALS ANGLES
 $\pm 1/16"$ $.X \pm .1$ [2,5] $\pm 1^\circ$
 $.XX \pm .06$ [1,3]

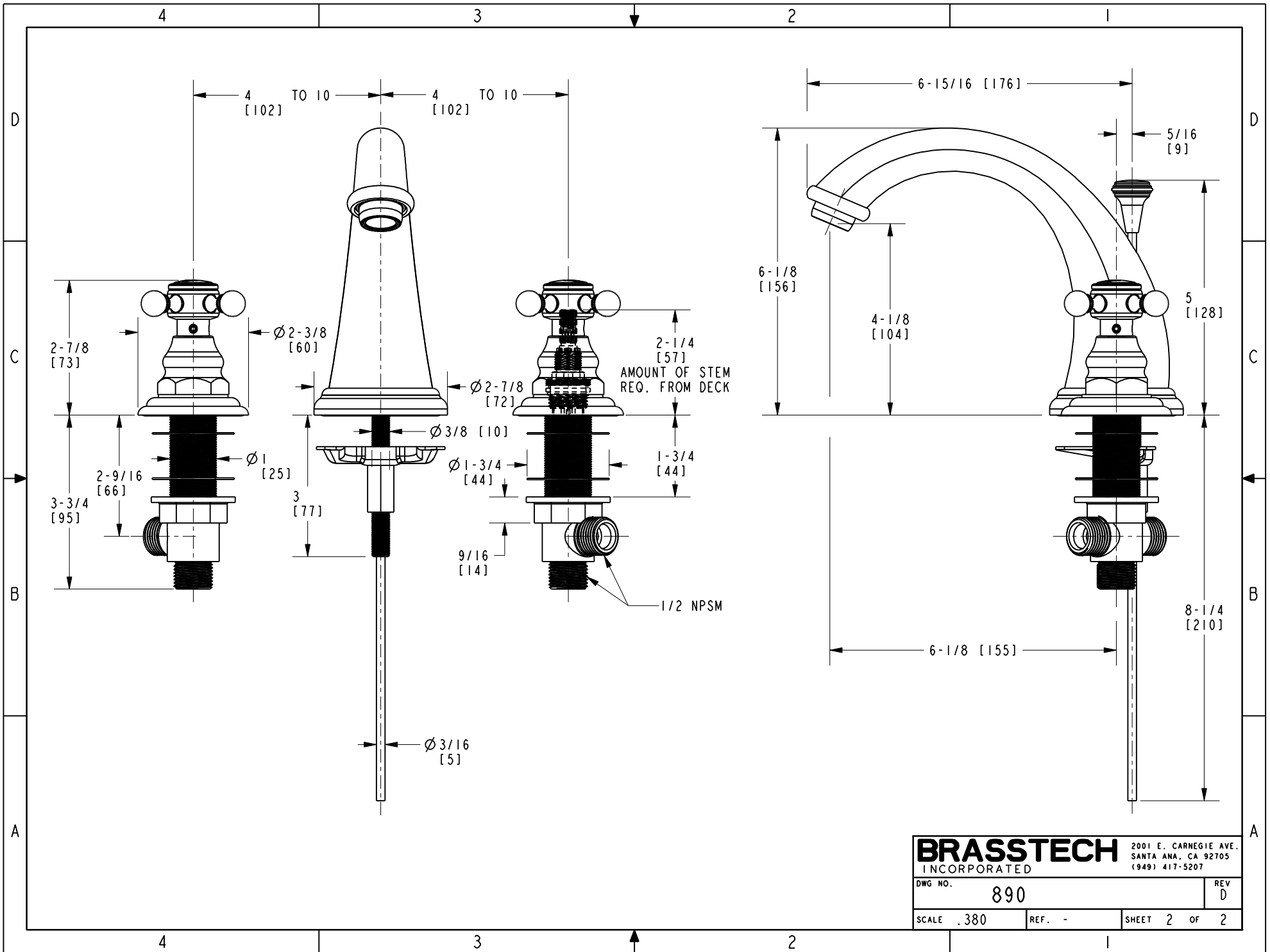
(X.XXX) DENOTES CRITICAL DIMS.
ALL THREADS ARE CRITICAL

DRAWN VINAY 08/04/17
CHECKED RAVINDRA 08/04/17
APPROVED J.M 08/04/17

BRASSTECH 2001 CARNEGIE AVE.
INCORPORATED SANTA ANA, CA 92705
(949) 417-5207

WIDESPREAD FAUCET

DWG NO.	890	REV	D
SCALE	.220	REF.	-
SHEET	1	OF	2



BRASSTECH 2001 E. CARNEGIE AVE.
 INCORPORATED SANTA ANA, CA 92705
 (949) 417-5207

DWG NO.	890	REV	D
SCALE	.380	REF.	-
SHEET 2		OF 2	