



**Iron Works®**  
Wall-mount Bathroom Sink  
**K-2822-1W**

**Features**

- KOHLER® cast iron.
- Integral and concealed wall-mount bracket.
- Round basin.
- Without overflow.
- Single faucet hole.
- Coordinates with other products in the Iron Works Historic collection.
- 24" (610 mm) x 23" (584 mm) x 7-7/16" (189 mm)

**Required Accessories**

1019171 Drain Spacer Gasket Kit  
K- 7114 Pop-Up Drain  
K- 7131-A Offset Drain  
K- 9018 P-Trap

**Recommended Accessories**

K- 2823 Console Table

**Components**

Additional included component/s: Accessory pack.



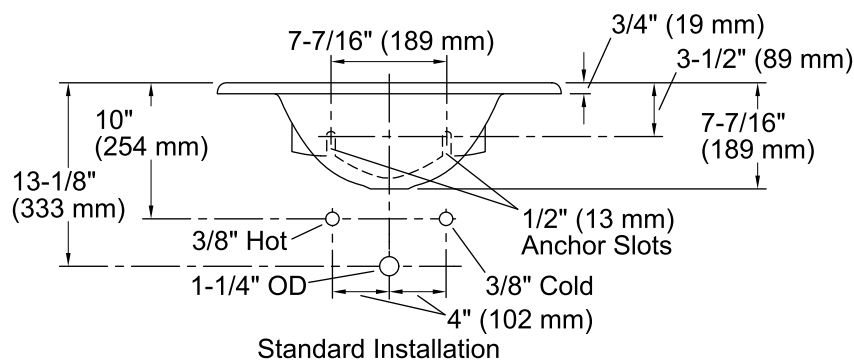
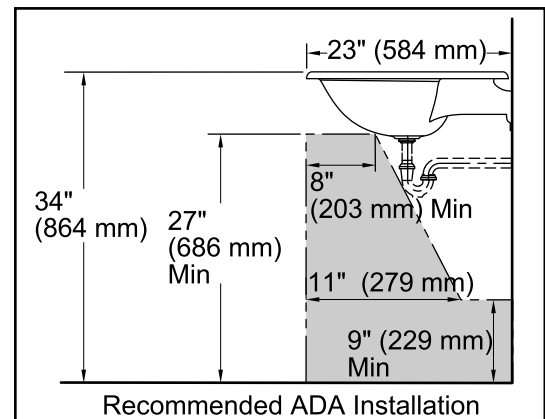
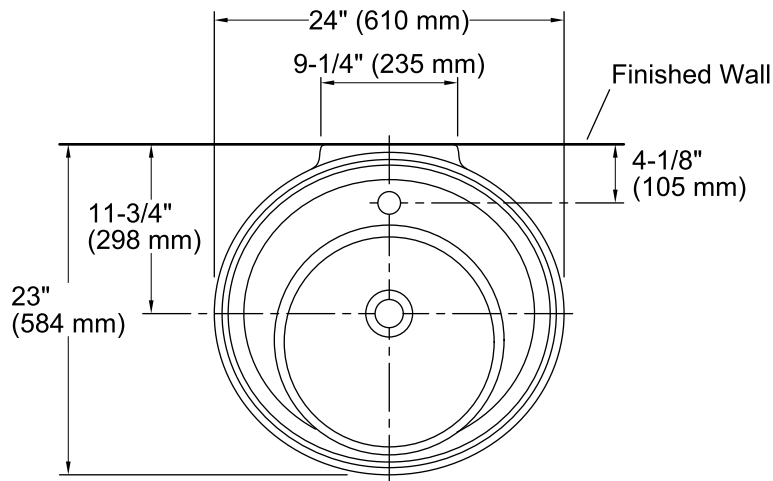
**ADA**

**Codes/Standards**

ASME A112.19.1/CSA B45.2  
ADA  
ICC/ANSI A117.1

**KOHLER® Lifetime Limited Warranty  
for Cast Iron Components**

See website for detailed warranty information.



### Technical Information

All product dimensions are nominal.

Bowl configuration: Single

Installation: Wall-mount

Bowl area (Only) Diameter: 15-3/8" (391 mm)  
Water depth: 6" (152 mm)

Number of deck holes: 1

Faucet hole(s): 1-3/8" (35 mm)

Drain hole: 1-3/4" (44 mm)

### Notes

Install this product according to the installation guide.

**CAUTION:** Risk of injury. This cast iron bathroom sink is very heavy. Install only to a reinforced stud structure constructed according to the installation instructions.

ADA compliant when installed to the specific requirements of these regulations.