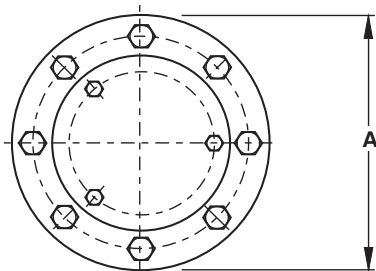


GENERAL SPECIFICATIONS

THREADED 2" & STUDED INLET - 3" TO 8"



Type:

Double Orifice (Small & Large Orifice) with Anti Surge Orifice mechanism.

End Connection:

Flange with 2" Male NPT Threaded and Screwed Studs for Alignment to ANSI B16.5 Class 150 for 3" to 8".

Nominal Sizes:

2", 3", 4", 6" & 8"

Model No's:

RGX 1021 _____ 145 psi
RGX 1031 _____ 145 psi

Pressure Ratings psi :

Operating Pressure Range - psi :

145 psi _____ Min _____ Max.
7.2 _____ 145

Operating Temperature Range:

40° to 176°F

Function:

- i) High volume air/gas discharge - pipeline filling.
- ii) High volume air intake - pipeline draining
- iii) Pressurized air/gas discharge - pipeline filled.
- iv) Surge dampening - high velocity air/gas discharge, liquid column separation & liquid oscillation.

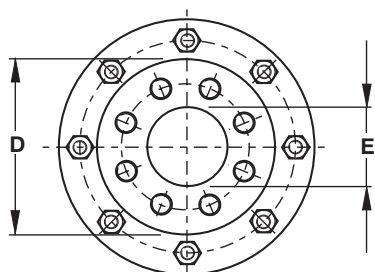
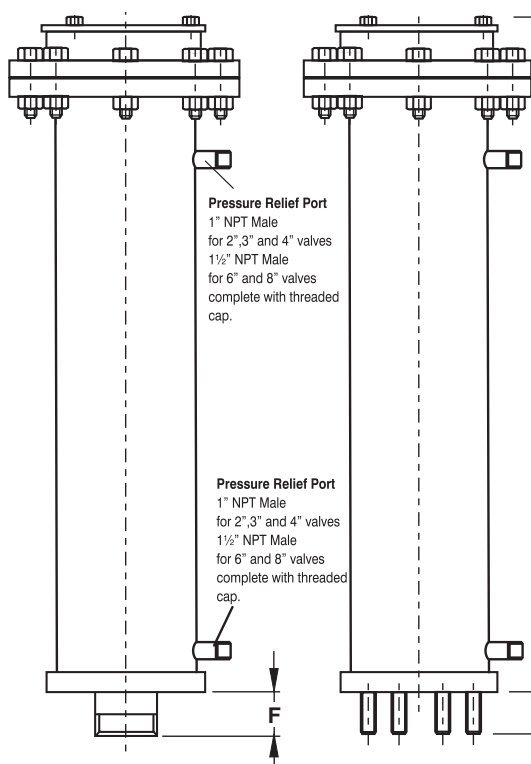
Valve Selection:- see pages 11 & 12

Materials of Construction:- see pages 5 & 7

Installation:- see page 3

C Standard Factory Tests:

- i) Hydrostatic test -1.5 x max. rated working pressure
- ii) Low head leak test - 7.2 psi
- iii) Small orifice function test at max. rated working pressure (minimum 1 valve in 10).



OVERALL DIMENSIONS & WEIGHTS

DN	Model No.	A	B	C	D	E	F	Weight Lbs
2	050 RGX 1021	8 ² / ₃	30 ³ / ₈	N/A	5	2	1 ² / ₃	39.7
3	080 RGX 1031	11 ¹ / ₄	30 ⁷ / ₁₀	2 ¹ / ₈	7 ⁷ / ₈	3	N/A	80.5
4	100 RGX 1031	11 ¹ / ₄	30 ⁷ / ₁₀	2 ¹ / ₈	8 ² / ₃	4	N/A	79.4
6	150 RGX 1031	15 ⁹ / ₁₆	41 ⁷ / ₁₀	2 ¹ / ₈	11	6	N/A	180.8
8	200 RGX 1031	17 ¹ / ₂	41 ⁷ / ₁₀	2 ¹ / ₈	13 ⁶ / ₁₆	8	N/A	227

Note: 2" valves have 2" NPT male inlet connections as standard.

Information subject to change without prior notice

page: 9
revision date: April 2015