

WINGITS®

STANDARD™

Stainless Steel Grab Bar 1.5" Diameter

Model:
WGB6

Part Numbers:

WGB6SS12
12" Satin Finish

WGB6SS16
16" Satin Finish

WGB6SS18
18" Satin Finish

WGB6SS24
24" Satin Finish

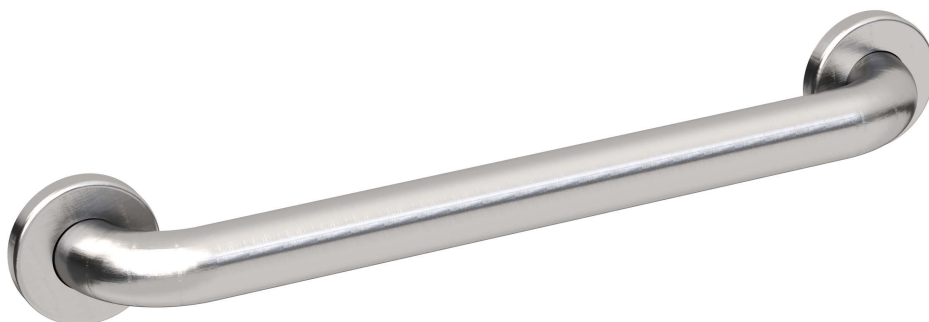
WGB6SS30
30" Satin Finish

WGB6SS32
32" Satin Finish

WGB6SS36
36" Satin Finish

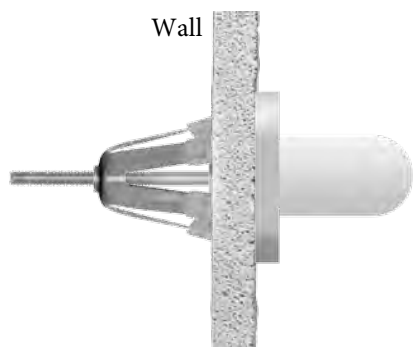
WGB6SS42
42" Satin Finish

WGB6SS48
48" Satin Finish



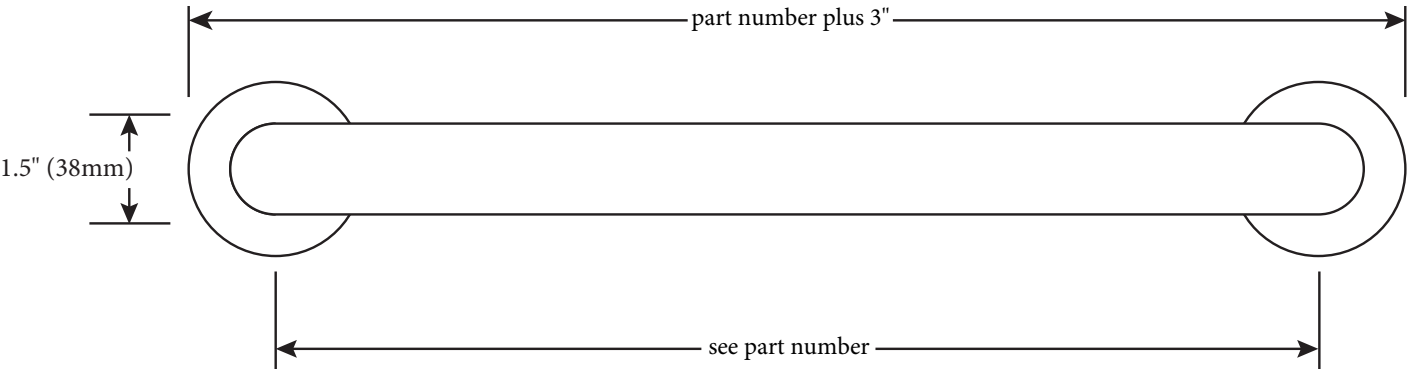
Features:

- All parts are 18-8 (304) Stainless Steel - tubing is 18-Gauge (1.2mm)
- Mounting Flanges are 3" (76mm) in diameter, 3/32" (2.5mm) thick, HeliArc® welded to the tubing
- Mounting Flanges have 5 holes for attachment to WINGITS® Fasteners or adequate blocking
- Meets or Exceeds all Building Codes, ADA Criteria, 2010 ADAAG and 2017 ANSI Standards

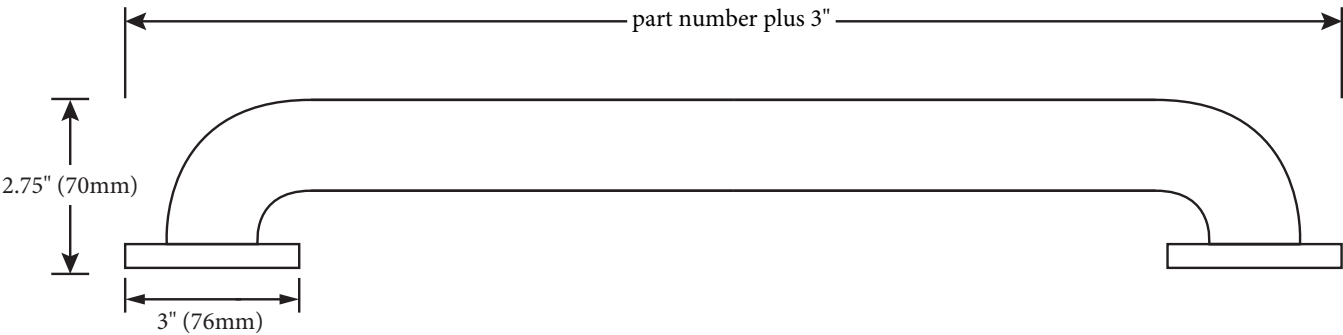


MECHANICAL DATA
Length: see part number
Height: 3" (76mm)
Depth: 3" (76mm)
Tube Diameter: 1.5" (38mm)
COMPOSITION
18-8 (304) Stainless Steel
INSTALLATION
Includes Stainless Steel Screws to Install into Adequate Structural Blocking . Can Be Installed with WINGITS® Fasteners when blocking is not available.
RECOMMENDED INTEGRATION
Install into Adequate Structural Blocking or with WINGITS® Fasteners.

Front



Top



Holes - 0.25" (6mm)
Slots - 0.25" (6mm) x 0.5" (13mm)
(used when installing with the
WINGITS® Grab Bar Fastening
System)
Bolt Circle is 2.3125" (59mm)

Grab Bar
Mounting Flange

Grab Bar Tube



Snap-on Cover

0.5" (13mm) Cover
Height

Included Hardware



2.5" S/S Screw (6)

Optional Hardware
(Sold Separately)



WINGITS® Grab Bar
Fastener (GBW40) (2)



WINGITS® Reverse Grab Bar
Fastener (SRGBW40) (2)



WINGITS® Structurally
Engineered (RES) Grab Bar
Fastener (RESGBW35) (2)