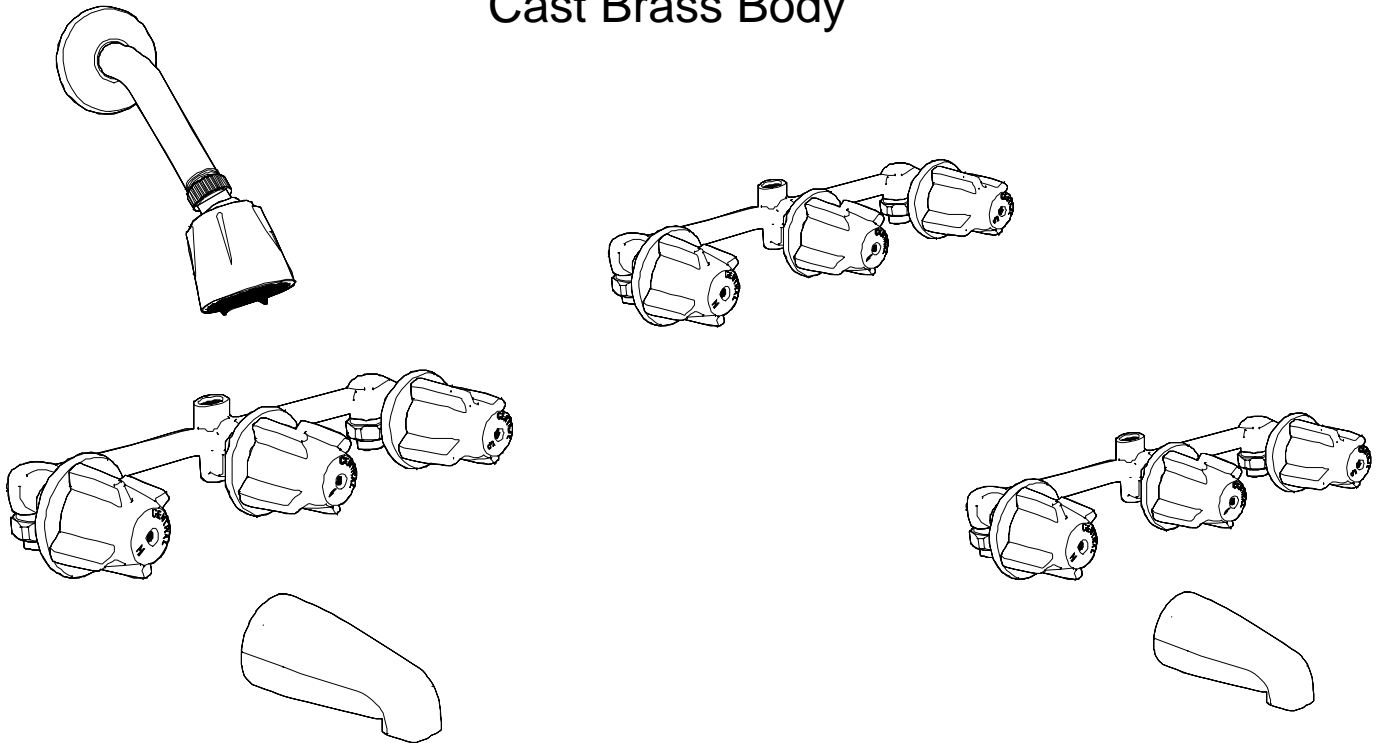


Central Brass®

The Easy Choice

THREE-VALVE BATH & SHOWER

Cast Brass Body



11" Centers, I.P. Unions, Compression Stems, Replaceable Seats

0951 Series	Bath Valve only
0961 Series	Bath Valve with Spout
0971 Series	Bath Valve with Spout & Shower

Bath Valve with Ceramic Stems and Spout & Shower

80971 Series	11-inch Centers, I.P. Unions
--------------	------------------------------

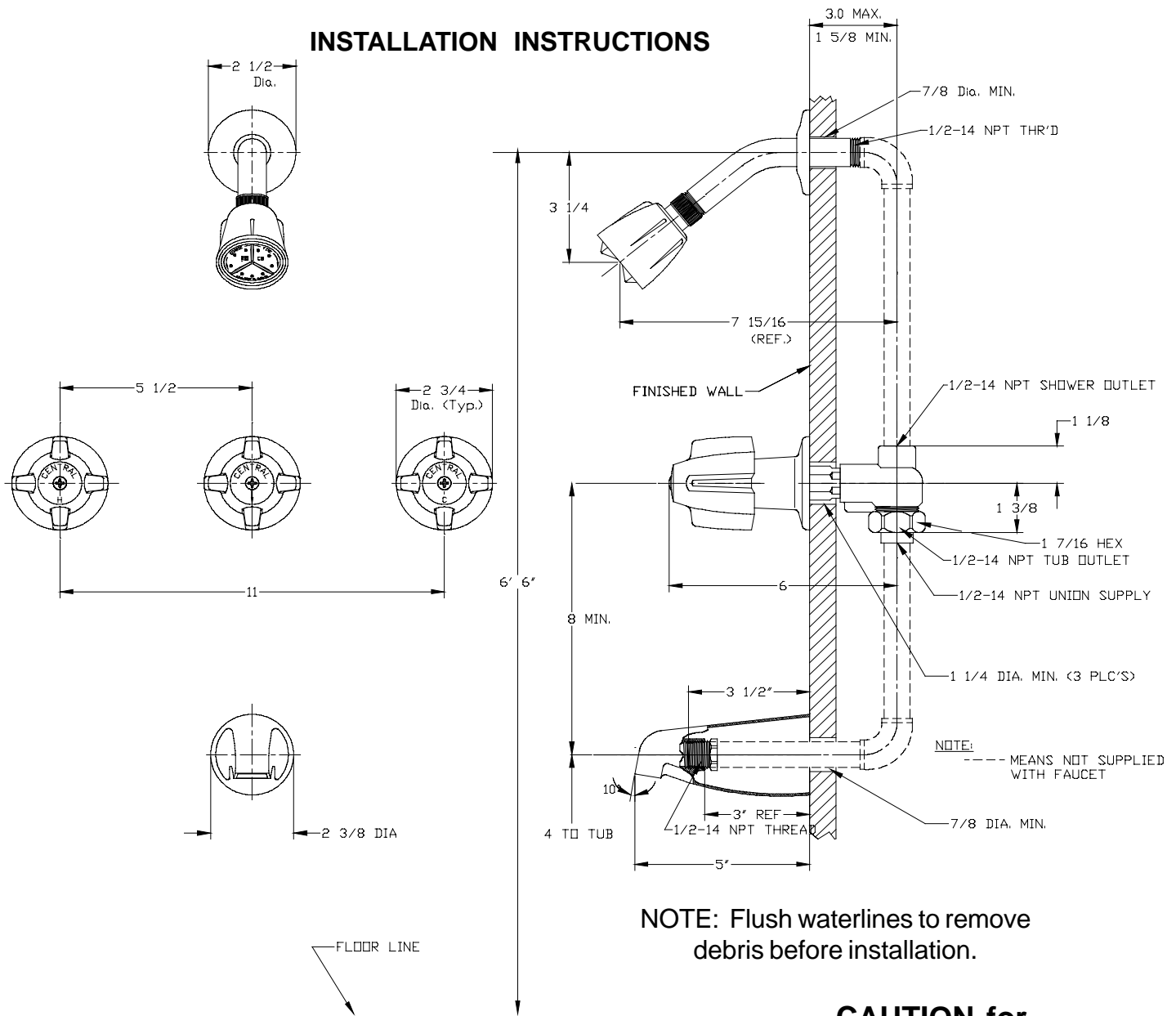
CENTRAL BRASS MFG CO

2950 East 55th Street, Cleveland, Ohio 44127

Phone: 216-883-0220 Fax: 216-883-0875 Email: sales @CentralBrass.com

www.CentralBrass.com

INSTALLATION INSTRUCTIONS



NOTE: Flush waterlines to remove debris before installation.

Roughing In Instructions

1. Locate and install valve assembly as shown.
2. Connect hot and cold supply lines.
3. Fabricate and install line for showerhead and spout.
4. Anchor fittings to studs in proper location.
5. Test for operation and leakage before finishing wall.
6. Install protectors on all exposed fittings.

Finishing Instructions

1. Remove fitting protectors.
2. Apply putty as required to prevent water damage to wall.
3. Install finished trim.
4. Test for operation and leakage.

CAUTION for

Compression Stem Assemblies

Soldered connections should be made with valve stems OPEN. DO NOT overheat. Let valve assembly cool after connection is made before closing valve stems

WARNING for

Ceramic Stem Assemblies

Remove hot and cold stem units before soldering. Failure to do so will result in damage to ceramic stem units. Cool valve assembly after solder connections are completed before reinstalling ceramic stem assemblies.

CENTRAL BRASS MFG CO

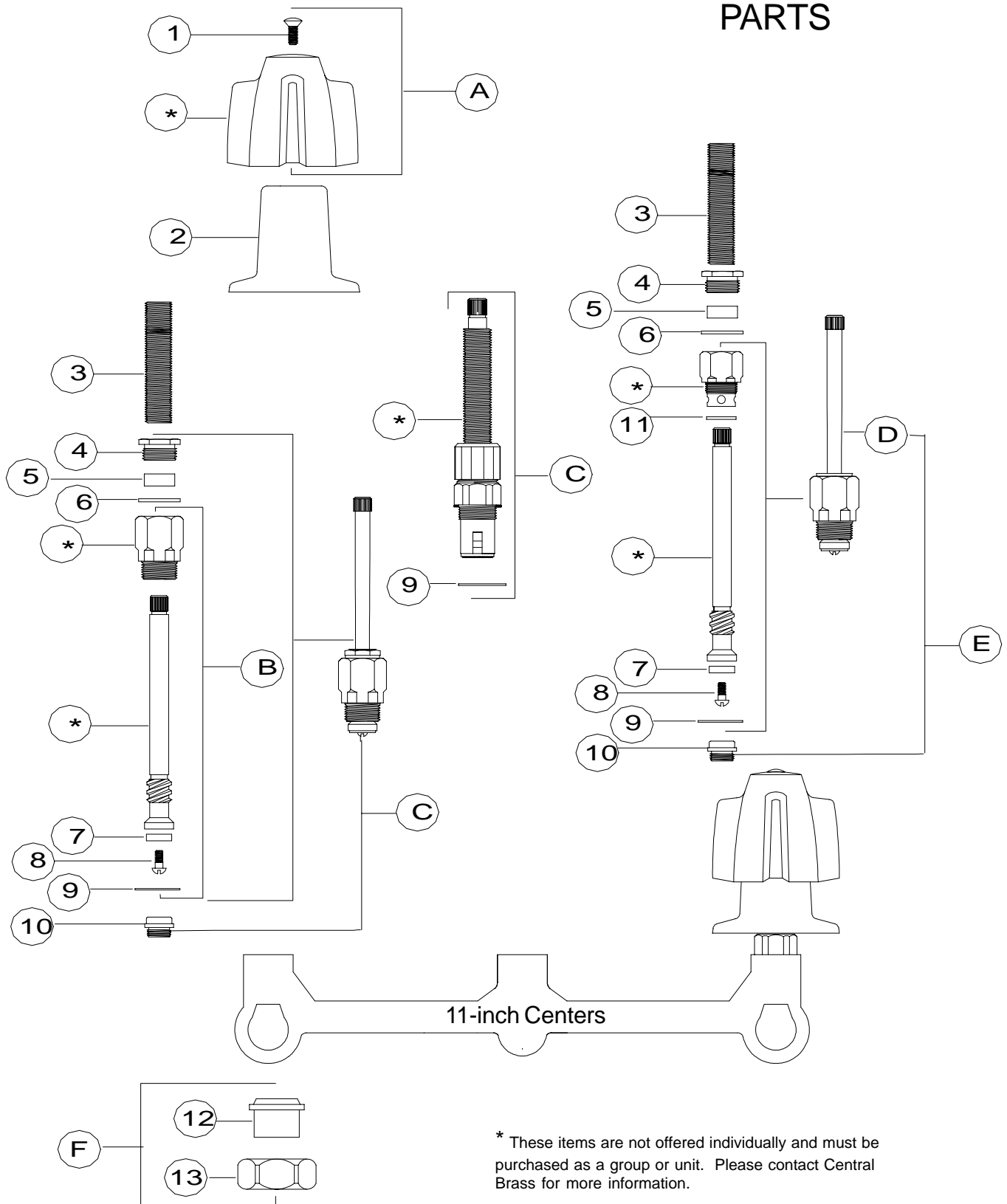
2950 East 55th Street, Cleveland, Ohio 44127

Phone: 216-883-0220

Fax: 216-883-0875

Email: sales @CentralBrass.com

REPLACEMENT PARTS



* These items are not offered individually and must be purchased as a group or unit. Please contact Central Brass for more information.

CENTRAL BRASS MFG CO

2950 East 55th Street, Cleveland, Ohio 44127

Phone: 216-883-0220

Fax: 216-883-0875

Email: sales @CentralBrass.com

www.CentralBrass.com

REPLACEMENT PARTS

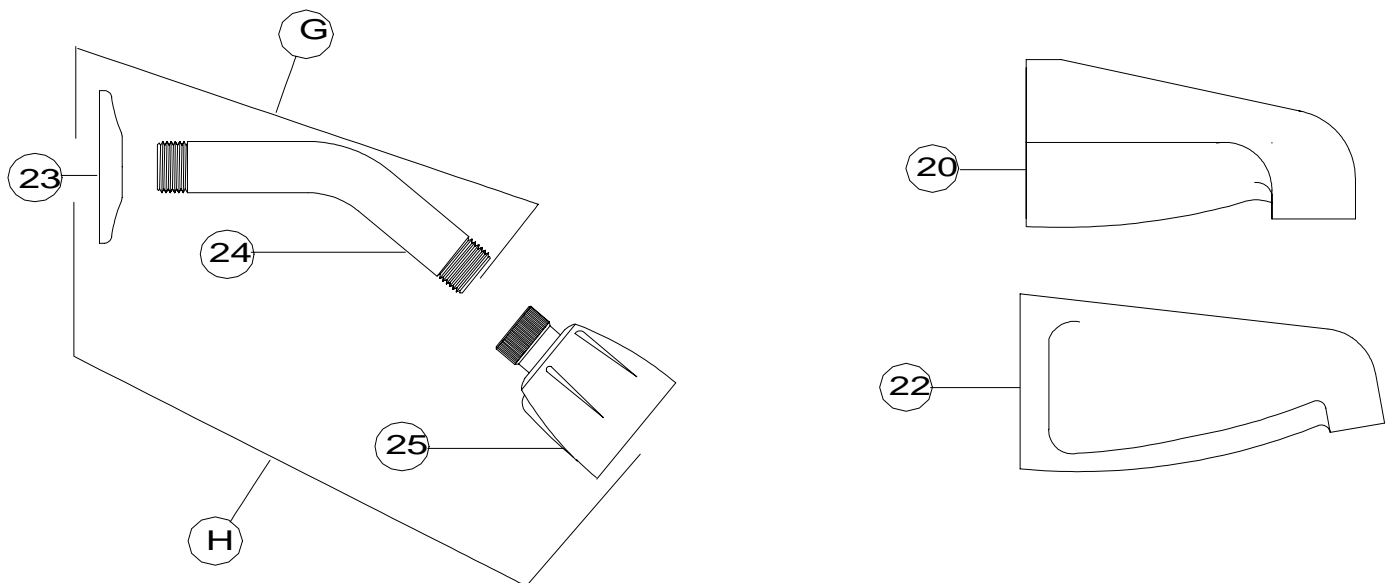
#	Part #	Description
A	G-508-C	Large Canopy Handle indexed C with Screw (X107-F)
A	G-508-H	Large Canopy Handle indexed H with Screw (X107-F)
A	G-508-D	Large Canopy Handle indexed with Arrow for Diverter with Screw (X107-F)
B	G-1549-CT	Corner Stem & Bonnet Group with Seat Washer (X901-WN) & Screw (X104) for 0951, 0961 & 0971 only
C	K-3-CT	Complete Corner Stem Assembly with Gasket (X1028-Y) & Bronze Seat (X263-BC) for 0951, 0961 & 0971 only
C	K-351-C	Ceramic-disc Stem Cartridge Cold with Gasket (X1028-Y) for item 80971 only
D	G-1588-CT	Diverter Stem & Bonnet Group with Seat Washer (X901-WN) & Screw (X104)
E	K-3-DT	Complete Diverter Stem Assembly With Gasket (X1028-Y) & Bronze Seat (X263-BC)
F	G-30	IP Union Sleeve (X1875) & Nut (X1876-BB)
G	3007-6	6-inch Shower Arm (714-WT-02) & Flange (X1035-SS)
H	G-3113-6	Shower Head (3034-1/2-02), 6-inch Shower Arm (714-WT-02) & Flange (X1035-SS)
1	X107-F	Handle Screw (25 pcs per pack)
2	521-B	Escutcheon
3	X269-29/16	2 ⁹ / ₁₆ Long Nipple (10 pcs per pack)
4	X765-TA	Packing Nut (6 pcs per pack)
5	X814-BA	Packing (10 pcs per pack)
6	X4-L	Packing Washer (6 pcs per pack)
7	X901-WNN	Seat Washer (25 pcs per pack)
8	X104	Seat Washer Screw (25 pcs per pack)
9	X1028-Y	Gasket (25 pcs per pack)
10	XPF-263-B	Replacement Seat (4 pcs per pack)
11	X4-N	Celcon Washer for diverter stem (6 pcs per pack)
12	X1875	IP Union Sleeve (2 pcs per pack)
13	X1876-BB	Coupling Nut (2 pcs per pack)
20	3145-D	½ IPS Brass Spout for item 0961 & 0971 only
22	3154-Z	Zamak Spout for item 0961-Z & 0971-Z only
23	X1035-SS	Shower Arm Flange (10 pcs per pack)
24	714-WT-02	6-inch Shower Arm
25	3034-1/2-02	Shower Head 2.5 GPM
	T-3	Handle Trim Set with Cold, Hot & Arrow indexed handles with screws and three escutcheons packed in a box

CENTRAL BRASS MFG CO

2950 East 55th Street, Cleveland, Ohio 44127

Phone: 216-883-0220 Fax: 216-883-0875 Email: sales @CentralBrass.com

www.CentralBrass.com



OPTIONS & REPLACEMENT PARTS

Suffix Number	Replaces Item #	Part Number	Description
80	A	K-505-1C	Silver Crown Acrylic Handles with indexed C metal button (G-503-M-02)
		K-505-1H	Silver Crown Acrylic Handles with indexed H metal button (G-503-M-02)
		K-505-1D	Silver Crown Acrylic Handles with indexed Arrow metal button (503-MD) for diverter
		X126-625B	Handle Screw for Acrylic Handles suffix 80 (6 pcs per pack)
		G-503-M-02	Metal indexed buttons C & H for Acrylic Handles suffix 80 (one pair per pack)
		503-MD	Metal button indexed with an arrow for diverter handle (1 pc)
C	F	G-30-C	Direct Sweat Union Sleeve (X1875) & Nut (X1876-BB) For C suffix items only
	12	X1875-C	Direct Sweat Union Sleeve (2 pcs per pack) for Item with C suffix
	10	X263-BC	Bronze Replacement Seat (10 pcs per pack)
	G	3007-8	8-inch Shower Arm (714-WT-02) & Flange (X1035-SS)
	H	G-3113-8	Shower Head (3034-1/2-02), 8-inch Shower Arm (714-WT-02) & Flange (X1035-SS)
		Accessories	
		G-1548-ET	Stem Extension with Screw (X105-F)
		X105-F	Screw for stem extension (4 pcs per pack)
Prefix Number	Replaces Item #	Part Number	Description
8	C	K-351-C	Ceramic-disc Stem Cartridge Cold with Gasket (X1028-Y)
8	C	K-351-H	Ceramic-disc Stem Cartridge Hot with Gasket (X1028-Y)
		Only for	80971

- If faucet has round handles (G-508) or (80 suffix) , use two K-351-C Cold stem assemblies
- If faucet has lever handles, use one Hot and one Cold stem assemblies

CENTRAL BRASS MFG CO

2950 East 55th Street, Cleveland, Ohio 44127

Phone: 216-883-0220 Fax: 216-883-0875 Email: sales @CentralBrass.com

CENTRAL BRASS MAINTENANCE INSTRUCTIONS

DISASSEMBLY	REPLACEMENT
<div data-bbox="391 310 865 499"> 1 REMOVE HANDLE 1. Turn off water supply 2. Remove the handle screw & handle 3. Unscrew the escutcheon </div> <div data-bbox="386 506 836 695"> </div>	<div data-bbox="865 310 1305 499"> 4 Use Only Central Replacement Parts </div> <div data-bbox="889 541 1357 1003"> <div style="display: flex; justify-content: space-around;"> <div style="text-align: center;"> K-3-CT </div> <div style="text-align: center;"> K-351-C </div> <div style="text-align: center;"> K-3-DT </div> </div> </div>
<div data-bbox="391 716 865 905"> 2 REMOVE STEM ASSEMBLY 1. Use adjustable wrench. 2. Turn stem to open position 3. Unscrew counterclockwise. Remove stem unit. </div> <div data-bbox="358 911 846 1079"> </div>	<div data-bbox="898 1045 1317 1136"> K-3-DT NOTE: Turn stem counterclockwise to hold the white celcon washer in position when installing. </div> <div data-bbox="898 1157 1317 1262"> NOTE: If replacing compression units with ceramic units make sure PF-263-B seat is removed from body before installing stem units. </div> <div data-bbox="898 1293 1300 1356"> Replace components in reverse order of disassembly </div>
<div data-bbox="391 1100 865 1268"> 3 REMOVE SEAT 1. Insert 5/16" allen wrench in seat. 2. Turn seat (counterclockwise) to remove. </div> <div data-bbox="331 1226 675 1415"> </div> <div data-bbox="293 1381 428 1430"> Use a 5/16" Allen Wrench </div> <div data-bbox="688 1367 850 1415"> For compression stems only </div>	

- If faucet has round handles (G-508) or (80 suffix) , use two K-351-C Cold stem assemblies
- If faucet has lever handles, use one Hot and one Cold stem assemblies

CENTRAL BRASS MFG CO
 2950 East 55th Street, Cleveland, Ohio 44127
 Phone: 216-883-0220 Fax: 216-883-0875 Email: sales @CentralBrass.com