

APOLLO®

INSTALLATION, OPERATION AND MAINTENANCE GUIDE

For Apollo Hi-Pressure Valve:

73-300 SERIES



 **CONBRACO**
Ball Valve Division

**** CAUTION ****

BEFORE INSTALLATION: Ensure that the component materials of the Valve are compatible with the media, with regard to corrosiveness, pressure, and temperature. Valves must be installed in piping systems that comply to the applicable portions of A.N.S.I. B31 Standard. Special considerations must be taken with respect to pipe line expansions and contractions and the media expansions and contractions within the piping system.

INSTALLATION

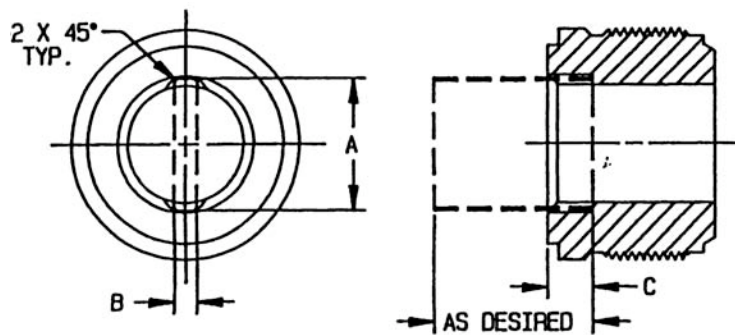
1. Pipe connections to be threaded into these valves should be accurately threaded, clean and free of foreign material or metal shavings.
2. TFE pipe tape is recommended for use as the pipe joint sealant.
3. Use two wrenches when making the pipe joint. Apply one wrench on the valve tailpiece nearest the joint being tightened to prevent breaking the seal between the body and tailpieces.

OPERATION

The Valve levers are marked showing proper rotation direction for “ON” and “OFF” positions. Rotation is clockwise for “OFF” and counterclockwise for “ON”.

RETAINER REMOVAL

NOTE: A special tool is required for retainer removal and can be made from a flat piece of steel by using dimensions shown below.



VALVE SIZE						
DIM.	1/2"	3/4"	1"	1-1/4"	1-1/2"	2"
A	.71	.87	1.15	1.37	1.67	1.90
B	.12	.18	.18	.18	.18	.25
C	.25	.37	.37	.37	.37	.50

MAINTENANCE

Normal stem packing wear can be compensated for by tightening the packing gland screw clockwise. If all of the adjustment to the packing gland screw has been made, remove the lever and packing gland screw and add one or two replacement bearings on top of the old packing. Reassemble the lever and packing gland screw.

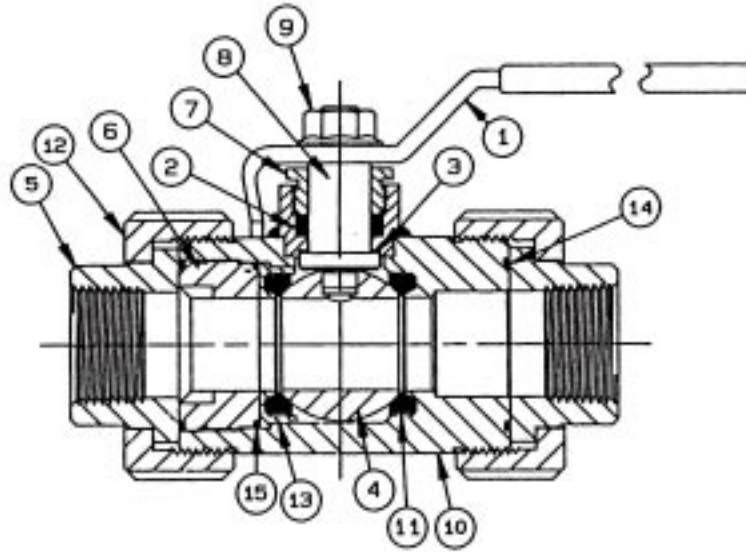
CAUTION: Do not disassemble Valve while under pressure nor with entrapped hazardous fluids therein.

If general repair of the valve is required, it is recommended that the body center section be removed and serviced rather than removing the entire Valve from the system. This reduced down-time and eliminates possible damage to the Valve or system during reinstallation of the Valve.

General repair of the valve can be made by:

1. Close valve.
2. Remove the body center section by turning union nuts counterclockwise.
3. Remove retainer from body center section by turning counter clockwise. (See page 2 for special tool dimensions.)
4. Remove the seat holder, being careful not to damage the ball. The top seat will come out with the seat holder.
5. Push ball out of body with finger.
6. Remove lever nut by turning counterclockwise. Lever assembly can then be lifted off stem.
7. Remove packing gland screw by turning counterclockwise and push stem down into body to remove.
8. Remove all seats and seals. To facilitate removal of the stem packing, cut with knife.
9. Replace all seats and seals as furnished in the Service Kit. Inspect the ball and stem for excessive wear or damage and replace if necessary.
10. Reverse the above procedure to reassemble Valve using a sealant on the retainer threads equivalent to Loctite Hydraulic Sealant.

NOTE: ALWAYS TEST VALVE AND SYSTEM BEFORE PUTTING THE SYSTEM INTO SERVICE.



GENERAL VALVE IDENTIFICATION

- | | |
|-------------------|--------------------|
| 1. LEVER ASSEMBLY | 9. LEVER NUT |
| 2. PACKING | 10. BODY |
| 3. BEARING | 11. SEAT (2) |
| 4. BALL | 12. UNION NUT (2) |
| 5. TAILPIECE (2) | 13. SEAT HOLDER |
| 6. RETAINER | 14. UNION SEAL (2) |
| 7. GLAND SCREW | 15. RETAINER SEAL |
| 8. STEM | |