

90°
BENDS

MOLDED
FOR YOUR
INDUSTRY

IntegriFuse™



 **INTEGRITY**
Fusion Products, Inc.

TOLL FREE 1-888-770-6330

INTEGRITYFUSION.COM

90° BENDS

The difference MOLDED Makes

Molded 90 elbows from Integrity Fusion Products offer performance, availability, and value that eliminate the need for fabricated fittings.

The molded difference includes:

- No inner fusion beads
- Fully Pressure Rated
- Wall thickness remains consistent throughout

IntegriFuse fittings are manufactured from 100% Virgin Resin with black high density bimodal polyethylene copolymer designed for use in, but not limited to, potable water, natural gas, industrial, landfill, oil & gas, and mining applications.

All IntegriFuse fittings meet ASTM-D2513 & ASTM-D3261 requirements.

All butt fusion, electrofusion, and transition fittings meet AWWA C-901/C-906, NSF-61, and NSF-372. IntegriFuse fittings are manufactured with resin having a material designation code of PE 3408, PE3608, PE 4710, and PE 100.

Integrity Fusion Products, Inc.

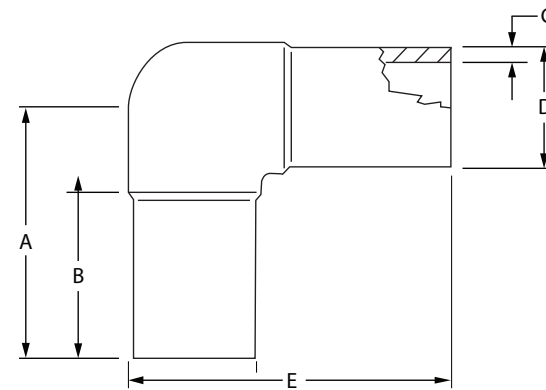
270 Parkade Court

Peachtree City, GA 30269

Phone 770.632.7530 | Fax 770.632.7540

www.IntegrityFusion.com

Call Toll Free at 888.770.6330



IPS

SDR 17 (Standard Dimension Ratio) 125 PSI (Working Pressure at 73.4° F)

Nominal Size	A	B	C	D	E	Weight	Item Code
2" IPS	4.36"	2.64"	0.140"	2.375"	5.63"	0.4 lbs.	100106
3" IPS	5.85"	3.50"	0.206"	3.500"	7.73"	1.1 lbs.	100110
4" IPS	6.85"	3.80"	0.265"	4.500"	9.21"	2.0 lbs.	100114
6" IPS	8.94"	4.75"	0.390"	6.625"	12.40"	5.4 lbs.	100118
8" IPS	11.81"	7.20"	0.507"	8.625"	16.13"	12.5 lbs.	100122
10" IPS	13.78"	8.27"	0.632"	10.750"	19.15"	22.0 lbs.	100126
12" IPS	14.96"	8.46"	0.750"	12.750"	21.33"	36.7 lbs.	100128
14" IPS	13.78"	6.45"	0.842"	14.0"	21.5"	42.0 lbs.	100151
16" IPS	14.56"	5.11"	0.941"	16.0"	TBD	58.0 lbs.	100153

SDR 11 (Standard Dimension Ratio) 200 PSI (Working Pressure at 73.4° F)

Nominal Size	A	B	C	D	E	Weight	Item Code	Notes
¾" IPS	3.19"	2.14"	0.095"	1.050"	3.82"	0.1 lbs.	100100	-
1" IPS	3.31"	2.18"	0.120"	1.315"	4.06"	0.2 lbs.	100101	-
1 ¼" IPS	3.48"	2.15"	0.151"	1.660"	4.41"	0.3 lbs.	100102	-
1 ½" IPS	3.92"	2.37"	0.173"	1.900"	5.00"	0.4 lbs.	100103	-
2" IPS	4.36"	2.64"	0.216"	2.375"	5.63"	0.5 lbs.	100105	FM 200
3" IPS	5.85"	3.50"	0.318"	3.500"	7.73"	1.6 lbs.	100109	FM 200
4" IPS	6.85"	3.80"	0.409"	4.500"	9.21"	2.8 lbs.	100113	FM 200
6" IPS	8.94"	4.75"	0.602"	6.625"	12.40"	7.7 lbs.	100117	FM 200
8" IPS	11.81"	7.20"	0.784"	8.625"	16.13"	17.3 lbs.	100121	FM 200
10" IPS	13.78"	8.27"	0.977"	10.750"	19.15"	30.1 lbs.	100125	FM 200
12" IPS	14.96"	8.46"	1.159"	12.750"	21.33"	49.9 lbs.	100127	FM 200
14" IPS	13.78"	6.45"	1.273"	14.0"	21.5"	44.0 lbs.	100127	-
16" IPS	14.50"	5.11"	1.455"	16.0"	TBD	76.0 lbs.	100127	-