

Central Brass

COMPANY

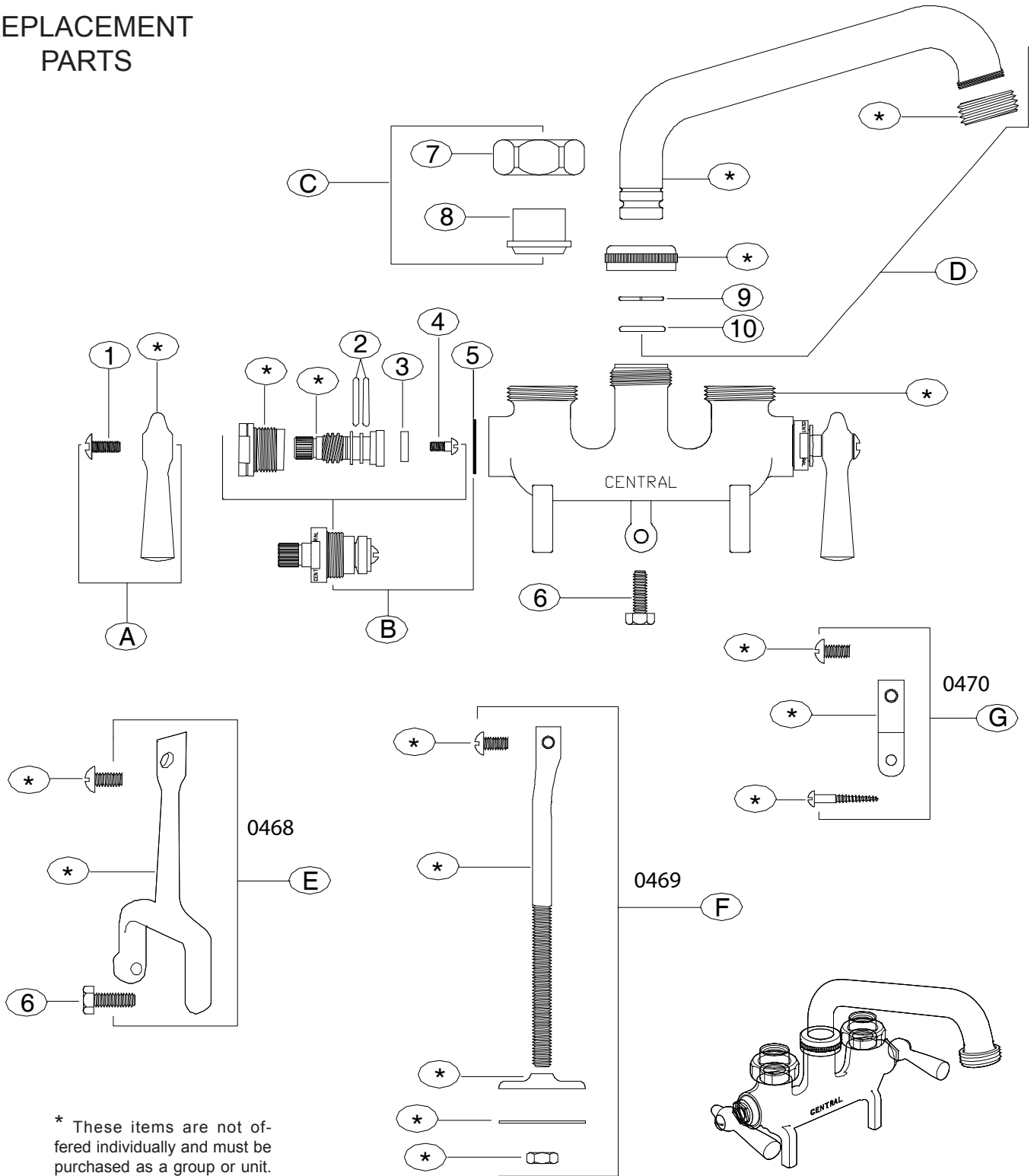
Brecksville, Ohio 44141

Phone: (216) 883-0220 Fax: (440) 526-5745

www.CentralBrass.com

Model Nos. **0465** **0466**
0468 **0469** **0470** Series
Laundry Tray Faucet

REPLACEMENT PARTS



* These items are not offered individually and must be purchased as a group or unit. Please contact Central Brass for more information.

Central Brass

COMPANY

Brecksville, Ohio 44141

Phone:(216)883-0220 Fax: (440)526-5745

www.CentralBrass.com

Model Nos. **0465** **0466**

0468 **0469** **0470** Series

Laundry Tray Faucet

REPLACEMENT PARTS

#	Part #	Description
A	G-520-W	Two Lever Handles indexed C and H with 2 Screws (X126-S)
B	G-453-EL	Cold O-Ring Stem Assembly with Gasket (X1028-Y)
B	G-453-ER	Hot O-Ring Stem Assembly with Gasket (X1028-Y)
C	G-30	IP Union Sleeve (X1875) & Nut (X1876-BB) Note: Not available for Item 0466
D	SU-2924-H-01	6-Inch Swivel Spout with Hose End
E	G-7233	Leg Mounting Group for Item 0468
F	G-7234	Leg Mounting Group for Item 0469
G	G-7237	Leg Mounting Group for Item 0470
1	X126-S	Handle Screw (6 pcs per pack)
2	X1038-453	O-Rings (25 pcs per pack)
3	X901-WNN	Seat Washer (25 pcs per pack)
4	X104	Seat Washer Screw (25 pcs per pack)
5	X1028-Y	Gasket (25 pcs per pack)
6	X113-A	Screw (6 pcs per pack)
7	X1876-BB	Coupling Nut (2 pcs per pack)
8	X1875	IP Union Sleeve (2 pcs per pack)
9	X166-FN	Snap Ring (6 pcs per pack)
10	X1038-KN	Spout O-Ring (25 pcs per pack)

OPTIONS & REPLACEMENT PARTS

for options (see replacement part sheets for individual items)

Suffix Number	Replaces Item #	Part Number	Description
C	C	G-30-C	Direct Sweat Union Sleeve (X1875) & Nut (X1876-BB) For C suffix items only
		X1875-C	Direct Sweat Union Sleeve (2 pcs per pack)
5	D	SU-2929-01	6-Inch Swivel Cast Brass Spout with Hose End
		X166-FN	Snap Ring (6 pcs per pack)
		X1038-KN	Spout O-Ring (25 pcs per pack)