

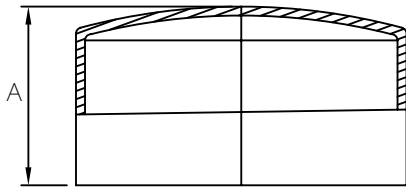


MULTI FITTINGS

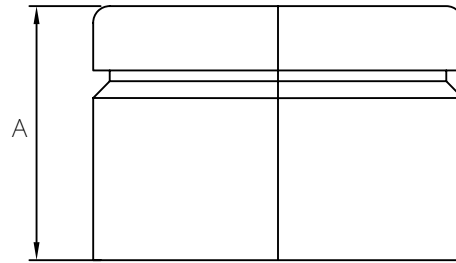
LAYING LENGTH

ISSUE DATE: NOV 15/17
SUPERCEDES: MAY 10/05

CAP



INJECTION MOLDED FITTING (M)



FABRICATED FITTING (F)

	SIZE	PART NUMBER	A REF
M	3	040986	1.625
M	4	040959	2.125
M	6	040988	3.625
M	8	040990	5.500
M	10	040995	5.500
M	12	040996	6.500
M	15	040997	8.000
F	18	040998	15.000
F	21	040985	18.500
F	24	040917	19.000