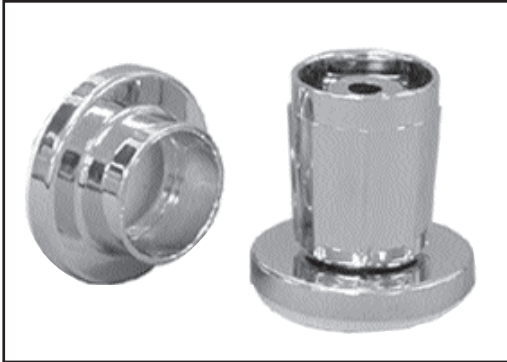


# SPECIFICATION SUBMITTAL SHEET

jones stephens corporation

## SHOWER ROD FLANGES

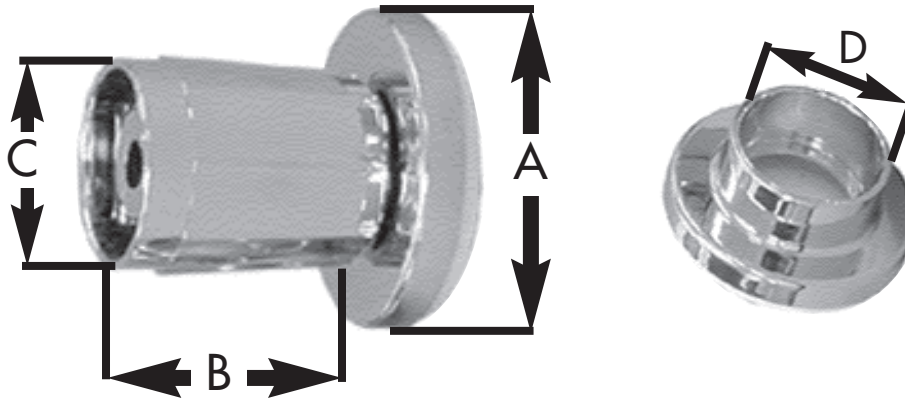


### PART NO. S02-151

#### features and benefits:

- Flange fit  $1\frac{5}{16}$ " and 1" OD rod
- Chrome die cast zinc

This product and others like it can be found in the Jones Stephens catalog. Call today to order your catalog or download it from our website: [www.plumbest.com](http://www.plumbest.com)



PART NO.	DESCRIPTION	A	B	C	D
□ S02-151	Jiffy Flange	$1\frac{5}{8}$ "	$1\frac{5}{8}$ "-2"	$1\frac{1}{8}$ "	$1\frac{1}{8}$ "

jones stephens corporation  
 3249 moody parkway • moody, alabama 35004  
 toll free phone: 1-800-355-6637 • toll free fax: 1-800-462-6991  
[www.plumbest.com](http://www.plumbest.com)