



UGPH

Parts List
25-January-2017



*This parts list is current as of the above revision date.
See <http://www.rheempartslists.net/92-42801-UGPH.pdf> for the current revision.*

80% Gas Furnaces

Table of Contents

Model Explanation	Page 3
Parts Numbers	
Panels - Miscellaneous 04-07	Page 4
Panels - Miscellaneous 10-15	Page 5
Electrical Group	Page 6
Blower Group	Page 7
Heat Exchanger-Burner Group	Page 8
Gas Controls	Page 9
Orifice Selection Chart	Page 10
Drawings/Photographs	
Exploded View	Page 11
Blower Assembly	Page 12
Burner Assembly	Page 13
NOX Insert Assembly after F0299	Page 14
Notes	Page 15

MODEL NUMBER EXPLANATION

U	G	P	H	-	0	7	E	A	U	E	R
(1)	(2)	(3)	(4)		(5)			(6)	(7)	(8)	(9)

(1) TRADEBRAND IDENTIFICATION

(2) MODEL

G= Gas Furnace

(3) TYPE

P = Upflow/Horizontal

(4) DESIGN SERIES / VARIATION

(5) HEATING INPUT DESIGNATION

04 = 45,000 BTU/HR

05 = 50,000 BTU/HR

06 = 65,000 BTU/HR

07 = 75,000 BTU/HR

10 = 100,000 BTU/HR

12 = 125,000 BTU/HR

15 = 150,000 BTU/HR

E = Electric

N = NOX

(6) VARIATIONS

A = Standard Cabinet

B = Wide Cabinet

(7) BLOWER DESIGNATION

U = 11 x 6

M = 11 x 7

R = 11 x 10

(8) AIRFLOW

E = 1100-1300 CFM

G = 1500-1700 CFM

J = 1900-2100 CFM

K = 600-2000 CFM

M = 1200-2000 CFM

N = 800-2000 CFM

S = 500-1300 CFM

(9) FUEL DESIGNATION

R = Natural Gas

SERIAL NUMBER EXPLANATION

D	C	5	D	3	0	7	F	2	2	9	4	9	9	9	9
(1)		(2)	(3)	(4)	(5)	(6)	(7)		(8)		(9)				(10)

(1) GAS CODE

(2) LIMIT CONTROL

(3) BLOWER

(4) HEATING ELEMENT

(5) SPECIAL AREA REQUIREMENT

(6) MOTOR HORSEPOWER

(7) PLANT

F = Fort Smith, AR

(8) WEEK

(9) YEAR

(10) PRODUCTION NUMBER

No.	Notes	MODEL	UGPH	UGPH	UGPH	UGPH	UGPH	UGPH	UGPH
		HEATING CAPACITY VARIATION BLOWER DESIGNATION AIRFLOW	04 A U S	05 A U E	05 B M K	06 A U E	07 A M G	07 A U E	07 B R K
PANELS, SHEET METAL, MISCELLANEOUS									
1		Jacket	AS-61690-01	AS-61690-01	AS-61690-02	AS-61690-03	AS-61690-02	AS-61690-03	AS-61690-04
2		Top Plate	AE-61657-01	AE-61657-01	AE-61657-02	AE-61657-02	AE-61657-02	AE-61657-02	AE-61657-03
3		Blower/Filter Door	AS-67893-01	AS-67893-01	AS-67894-01	AS-67894-01	AS-67894-01	AS-67894-01	AS-67895-01
4		Burner Door	AE-61675-01	AE-61675-01	AE-61676-01	AE-61676-01	AE-61676-01	AE-61676-01	AE-61677-01
		Plug Button - 1-3/16 in. opening (2)	45-22980-01	45-22980-01	45-22980-01	45-22980-01	45-22980-01	45-22980-01	45-22980-01
5		Mounting Control Plate	AE-67877-01	AE-67877-01	AE-67877-01	AE-67877-01	AE-67877-01	AE-67877-01	AE-67877-01
		Control Box	68-22857-01	68-22857-01	68-22857-01	68-22857-01	68-22857-01	68-22857-01	68-22857-01
		Control Box Cover	AE-61699-02	AE-61699-02	AE-61699-02	AE-61699-02	AE-61699-02	AE-61699-02	AE-61699-02
		Junction Box	AE-61475-02	AE-61475-02	AE-61475-02	AE-61475-02	AE-61475-02	AE-61475-02	AE-61475-02
		Junction Box Cover	AE-61476-02	AE-61476-02	AE-61476-02	AE-61476-02	AE-61476-02	AE-61476-02	AE-61476-02
10		Pressure Switch							See Electrical Group
11		Door Switch - Push Button							See Electrical Group
12		Limit - Main Limit (Heat Exchanger Panel)							See Electrical Group
13		Limit - Manual Reset (Burner Compartment)							See Electrical Group
		Limit - Heat Assisted (Blower Housing)							See Electrical Group
14		Bracket - Limit (Manual Reset) (3)	AE-61600-02	AE-61600-02	AE-61600-02	AE-61600-02	AE-61600-02	AE-61600-02	AE-61600-02
15		Transformer							See Electrical Group
		Power Factor Choke	N/A	N/A	46-24256-02	N/A	N/A	N/A	46-24256-02
16		Induced Draft Blower w/Gasket							See Electrical Group
17		Blower Assembly							See Blower Group
23		Heat Exchanger Assembly							See Heat Exchanger Group
		Heat Exchanger Bracket							See Heat Exchanger Group
		Filter Support Angle	AE-61883-01	AE-61883-01	AE-61883-01	AE-61883-01	AE-61883-01	AE-61883-01	AE-61883-01
		Silicone Rubber Tubing	79-21491-03	79-21491-03	79-21491-03	79-21491-03	79-21491-03	79-21491-03	79-21491-03
		Filter Rod Support Angle	AE-60520-01	AE-60520-01	AE-60520-01	AE-60520-01	AE-60520-01	AE-60520-01	AE-60520-01
		Filter Support Angle	AE-61883-01	AE-61883-01	AE-61883-01	AE-61883-01	AE-61883-01	AE-61883-01	AE-61883-01
		Filter Retainer Rod	45-24095-01	45-24095-01	45-24095-01	45-24095-01	45-24095-01	45-24095-01	45-24095-01
24		Filter - Permanent Plastic	54-24094-01	54-24094-01	54-24094-01	54-24094-01	54-24094-01	54-24094-01	54-24094-02
25		Gas Valve							See Gas Controls
26		Integrated Furnace Control Board (IFC)							See Gas Controls
27		Ignitor							See Gas Controls

No.	Notes	MODEL	UGPH	UGPH	UGPH	UGPH	UGPH	UGPH
		HEATING CAPACITY VARIATION BLOWER DESIGNATION AIRFLOW	10 A M E	10 B R J	10 B R M	12 A R J	12 A R M	15 A R J
PANELS, SHEET METAL, MISCELLANEOUS								
1		Jacket	AS-61690-22	AS-61690-24	AS-61690-04	AS-61690-25	AS-61690-05	AS-61690-25
2		Top Plate	AE-61657-02	AE-61657-03	AE-61657-03	AE-61657-04	AE-61657-04	AE-61657-04
3		Blower/Filter Door	AS-67894-01	AS-67895-01	AS-67895-01	AS-67896-01	AS-67896-01	AS-67896-01
4		Burner Door	AE-61676-01	AE-61677-01	AE-61677-01	AE-61678-01	AE-61678-01	AE-61678-01
		Plug Button - 1-3/16 in. opening (2)	45-22980-01	45-22980-01	45-22980-01	45-22980-01	45-22980-01	45-22980-01
5		Mounting Control Plate	AE-67877-01	AE-67877-01	AE-67877-01	AE-67877-01	AE-67877-01	AE-67877-01
		Control Box	68-22857-01	68-22857-01	68-22857-01	68-22857-01	68-22857-01	68-22857-01
		Control Box Cover	AE-61699-02	AE-61699-02	AE-61699-02	AE-61699-02	AE-61699-02	AE-61699-02
		Junction Box	AE-61475-02	AE-61475-02	AE-61475-02	AE-61475-02	AE-61475-02	AE-61475-02
		Junction Box Cover	AE-61476-02	AE-61476-02	AE-61476-02	AE-61476-02	AE-61476-02	AE-61476-02
10		Pressure Switch	See Electrical Group					
11		Door Switch - Push Button	See Electrical Group					
12		Limit - Main Limit (Heat Exchanger Panel)	See Electrical Group					
13		Limit - Manual Reset (Burner Compartment)	See Electrical Group					
		Limit - Heat Assisted (Blower Housing)	See Electrical Group					
14		Bracket - Limit (Manual Reset) (3)	AE-61600-02	AE-61600-02	AE-61600-02	AE-61600-02	AE-61600-02	AE-61600-02
15		Transformer	See Electrical Group					
		Power Factor Choke	N/A	N/A	46-24256-02	N/A	46-24256-02	N/A
16		Induced Draft Blower w/Gasket	See Electrical Group					
17		Blower Assembly	See Blower Group					
23		Heat Exchanger Assembly	See Heat Exchanger Group					
		Heat Exchanger Bracket	See Heat Exchanger Group					
		Filter Support Angle	AE-61883-01	AE-61883-01	AE-61883-01	AE-61883-01	AE-61883-01	AE-61883-01
		Silicone Rubber Tubing	79-21491-03	79-21491-03	79-21491-03	79-21491-03	79-21491-03	79-21491-03
		Filter Rod Support Angle	AE-60520-01	AE-60520-01	AE-60520-01	AE-60520-01	AE-60520-01	AE-60520-01
		Filter Support Angle	AE-61883-01	AE-61883-01	AE-61883-01	AE-61883-01	AE-61883-01	AE-61883-01
		Filter Retainer Rod	45-24095-01	45-24095-01	45-24095-01	45-24095-01	45-24095-01	45-24095-01
24		Filter - Permanent Plastic	54-24094-01	54-24094-02	54-24094-02	54-24094-03	54-24094-03	54-24094-03
25		Gas Valve	See Gas Controls					
26		Integrated Furnace Control Board (IFC)	See Gas Controls					
27		Ignitor	See Gas Controls					

No.	Notes	MODEL HEATING CAPACITY VARIATION BLOWER DESIGNATION AIRFLOW	UGPH	UGPH	UGPH	UGPH	UGPH	UGPH	UGPH
			04 A U S	05 A U E	05 B M K	06 A U E	07 A M G	07 A U E	07 B R K
ELECTRICAL GROUP									
10	Stk	Pressure Switch - Before F3702	42-24335-03	42-24335-03	42-23648-03	42-24335-03	42-24335-03	42-24335-03	42-23648-03
10	Stk	Pressure Switch - On or After F3702	42-24335-03	42-23648-02	42-23648-03	42-24335-03	42-23648-02	42-23648-02	42-23648-03
11		Door Switch - Push Button	42-22692-01	42-22692-01	42-22692-04	42-22692-01	42-22692-01	42-22692-01	42-22692-04
12	Stk	Limit - Main Limit (Heat Exchanger Panel)	47-25349-01	47-25349-03	47-25349-01	47-25349-02	47-25349-01	47-25349-02	47-25349-04
13	Stk	Limit - Manual Reset (Burner Compartment) (3)	47-22861-01	47-22861-01	47-22861-01	47-22861-01	47-22861-01	47-22861-01	47-22861-01
	Stk	Limit - Heat Assisted (Blower Housing)	47-22860-01	47-22860-01	47-22860-01	47-22860-01	47-22860-01	47-22860-01	47-22860-01
15	Stk	Transformer - On or After F1399	46-24124-03	46-24124-03	46-24124-03	46-24124-03	46-24124-03	46-24124-03	46-24124-03
15	Stk	Transformer w/Fuse - Before F1399	46-24124-05	46-24124-05	46-24124-05	46-24124-05	46-24124-05	46-24124-05	46-24124-05
		Transformer Fuse (Small - 9/16 in.)	46-22863-82	46-22863-82	46-22863-82	46-22863-82	46-22863-82	46-22863-82	46-22863-82
		Transformer Fuse (Large - 1-9/16 in.)	46-22863-84	46-22863-84	46-22863-84	46-22863-84	46-22863-84	46-22863-84	46-22863-84
16	Stk	Induced Draft Blower w/Gasket - Before F2002	70-24071-04	70-24157-03	70-24157-03	70-24071-05	70-24157-03	70-24157-03	70-24157-03
16	Stk	Induced Draft Blower w/Gasket - On or After F2002	70-24071-04	70-24175-01	70-24157-03	70-24071-05	70-24175-01	70-24175-01	70-24157-03
26		Integrated Furnace Control Board (IFC)	See Gas Controls						
		Wiring Harness - 9 pin from board to 9 pin	AS-61997-04	AS-61997-04	AS-61997-04	AS-61997-04	AS-61997-04	AS-61997-04	AS-61997-04
		Wiring Harness - 9 pin to 9 terminals	AS-61998-01	AS-61998-01	AS-61998-01	AS-61998-01	AS-61998-01	AS-61998-01	AS-61998-01
		Wiring Harness - 2 pin from board to 4 pin	45-24371-09	45-24371-09	45-24371-09	45-24371-09	45-24371-09	45-24371-09	45-24371-09
		Wiring Harness - 4 pin to 2 terminals	45-24371-14	45-24371-14	45-24371-14	45-24371-14	45-24371-14	45-24371-14	45-24371-14
		Wiring Harness - 4 pin to 2 pin and 2 terminals	45-24371-10	45-24371-10	45-24371-10	45-24371-10	45-24371-10	45-24371-10	45-24371-10
		Wiring Harness - 6 pin from board to 4 pin	45-24371-05	45-24371-05	45-24371-05	45-24371-05	45-24371-05	45-24371-05	45-24371-05

No.	Notes	MODEL HEATING CAPACITY VARIATION BLOWER DESIGNATION AIRFLOW	UGPH	UGPH	UGPH	UGPH	UGPH	UGPH	UGPH
			10 A M E	10 B R J	10 B R M	12 A R J	12 A R M	15 A R J	
ELECTRICAL GROUP									
10	Stk	Pressure Switch - Before F3702	42-24335-03	42-24335-03	42-23648-03	42-24335-02	42-23648-02	42-24335-02	
10	Stk	Pressure Switch - On or After F3702	42-23648-02	42-23648-02	42-23648-03	42-24335-02	42-23648-02	42-24335-02	
11		Door Switch - Push Button	42-22692-01	42-22692-01	42-22692-04	42-22692-01	42-22692-04	42-22692-01	
12	Stk	Limit - Main Limit (Heat Exchanger Panel)	47-25349-02	47-25349-01	47-25349-01	47-25349-03	47-25349-03	47-25349-03	
13	Stk	Limit - Manual Reset (Burner Compartment) (3)	47-22861-01	47-22861-01	47-22861-01	47-22861-01	47-22861-01	47-22861-01	
	Stk	Limit - Heat Assisted (Blower Housing)	47-22860-03	47-22860-01	47-22860-01	47-22860-03	47-22860-03	47-22860-04	
15	Stk	Transformer - On or After F1399	46-24124-03	46-24124-03	46-24124-03	46-24124-03	46-24124-03	46-24124-03	
15	Stk	Transformer w/Fuse - Before F1399	46-24124-05	46-24124-05	46-24124-05	46-24124-05	46-24124-05	46-24124-05	
		Transformer Fuse (Small - 9/16 in.)	46-22863-82	46-22863-82	46-22863-82	46-22863-82	46-22863-82	46-22863-82	
		Transformer Fuse (Large - 1-9/16 in.)	46-22863-84	46-22863-84	46-22863-84	46-22863-84	46-22863-84	46-22863-84	
16	Stk	Induced Draft Blower w/Gasket - Before F2002	70-24157-03	70-24157-03	70-24157-03	70-24157-03	70-24157-03	70-24157-03	
16	Stk	Induced Draft Blower w/Gasket - On or After F2002	70-24175-01	70-24175-01	70-24157-03	70-24175-01	70-24157-03	70-24175-01	
26		Integrated Furnace Control Board (IFC)	See Gas Controls						
		Wiring Harness - 9 pin from board to 9 pin	AS-61997-04	AS-61997-04	AS-61997-04	AS-61997-04	AS-61997-04	AS-61997-04	
		Wiring Harness - 9 pin to 9 terminals	AS-61998-01	AS-61998-01	AS-61998-01	AS-61998-01	AS-61998-01	AS-61998-01	
		Wiring Harness - 2 pin from board to 4 pin	45-24371-09	45-24371-09	45-24371-09	45-24371-09	45-24371-09	45-24371-09	
		Wiring Harness - 4 pin to 2 terminals	45-24371-14	45-24371-14	45-24371-14	45-24371-14	45-24371-14	45-24371-14	
		Wiring Harness - 4 pin to 2 pin and 2 terminals	45-24371-10	45-24371-10	45-24371-10	45-24371-10	45-24371-10	45-24371-10	
		Wiring Harness - 6 pin from board to 4 pin	45-24371-05	45-24371-05	45-24371-05	45-24371-05	45-24371-05	45-24371-05	

No.	Notes	MODEL HEATING CAPACITY VARIATION BLOWER DESIGNATION AIRFLOW	UGPH	UGPH	UGPH	UGPH	UGPH	UGPH	UGPH
			04 A U S	05 A U E	05 B M K	06 A U E	07 A M G	07 A U E	07 B R K
BLOWER GROUP									
17	Stk	Blower Assembly (Includes items 18-22)	AS-61697-46	AS-61697-47	AS-61697-58	AS-61697-48	AS-61697-55	AS-61697-48	AS-61697-60
18		Housing	AS-61674-19	AS-61674-20	AS-61674-21	AS-61674-20	AS-61674-21	AS-61674-20	AS-61674-22
19	Stk	Blower Motor - PSC	51-24070-01	51-22873-01	N/A	51-24070-02	51-25023-01	51-24070-02	N/A
19	Stk	Blower Motor - ECM	N/A	N/A	51-24375-01	N/A	N/A	N/A	51-24374-06
20		Motor Mount (4)	AE-61698-02	AE-61698-02	N/A	AE-61698-02	AE-61698-02	AE-61698-02	N/A
		ECM Motor Mount Bracket (4)	N/A	N/A	AE-61956-01	N/A	N/A	N/A	AE-61956-01
		ECM Motor Mount	N/A	N/A	70-24104-02	N/A	N/A	N/A	70-24104-02
21	Stk	Blower Wheel	70-22683-01	70-22683-01	70-24254-02	70-22683-01	70-23111-05	70-22683-01	70-23111-20
22	Stk	Capacitor - Blower Motor	43-21298-43	43-21298-42	N/A	43-21298-42	43-21298-43	43-21298-42	N/A
		Limit - Heat Assisted (Blower Housing)	See Electrical Group						
26		Integrated Furnace Control Board (IFC)	See Gas Controls						

No.	Notes	MODEL HEATING CAPACITY VARIATION BLOWER DESIGNATION AIRFLOW	UGPH	UGPH	UGPH	UGPH	UGPH	UGPH	UGPH
			10 A M E	10 B R J	10 B R M	12 A R J	12 A R M	15 A R J	
BLOWER GROUP									
17	Stk	Blower Assembly (Includes items 18-22)	AS-61697-50	AS-61697-52	AS-61697-85	AS-61697-52	AS-61697-43	AS-61697-52	
18		Housing	AS-61674-21	AS-61674-22	AS-61674-22	AS-61674-22	AS-61674-22	AS-61674-22	
19	Stk	Blower Motor - PSC	51-24070-02	51-25023-01	N/A	51-25023-01	N/A	51-25023-01	
19	Stk	Blower Motor - ECM	N/A	N/A	51-24376-06	N/A	51-24376-02	N/A	
20		Motor Mount (4)	AE-61698-02	AE-61698-02	N/A	AE-61698-02	N/A	AE-61698-02	
		ECM Motor Mount Bracket (4)	N/A	N/A	AE-61956-01	N/A	AE-61956-01	N/A	
		ECM Motor Mount	N/A	N/A	70-24104-02	N/A	70-24104-02	N/A	
21	Stk	Blower Wheel	70-22688-01	70-20602-01	70-24255-01	70-20602-01	70-24255-01	70-20602-01	
22	Stk	Capacitor - Blower Motor	43-21298-42	43-21298-43	N/A	43-21298-43	N/A	43-21298-43	
		Limit - Heat Assisted (Blower Housing)	See Electrical Group						
26		Integrated Furnace Control Board (IFC)	See Gas Controls						

No.	Notes	MODEL HEATING CAPACITY VARIATION BLOWER DESIGNATION AIRFLOW	UGPH	UGPH	UGPH	UGPH	UGPH	UGPH	UGPH
			04 A U S	05 A U E	05 B M K	06 A U E	07 A M G	07 A U E	07 B R K
HEAT EXCHANGER, BURNER / MANIFOLD									
23	Stk	Heat Exchanger Assembly	AS-61579-01	AS-61579-09	AS-61579-10	AS-61579-08	AS-100560-01	AS-100560-01	AS-61579-11
		Heat Exchanger Bracket (2)	AE-67846-02	AE-67846-02	AE-67846-02	AE-67846-02	AE-67846-02	AE-67846-02	AE-67846-02
6	Stk	Burner Tube w/Shield - Before F1399	75-22840-02 (2)	75-22840-02 (2)	75-22840-02 (2)	75-22840-02 (3)	75-22840-02 (3)	75-22840-02 (3)	75-22840-02 (3)
6	Stk,3	Burner Assembly - On or After F1399 (See Note 3)	AS-60993-02	AS-60993-02	AS-60993-02	AS-60993-03	AS-60993-03	AS-60993-03	AS-60993-03
7a		NOX Burner Insert - Before F0299	AE-61771-01 (2)	AE-61771-01 (2)	AE-61771-01 (2)	AE-61771-01 (3)	AE-61771-01 (3)	AE-61771-01 (3)	AE-61771-01 (3)
7a		NOX Burner Insert (Cross X) - On or After F0299	AS-67875-01 (1)	AS-67875-01 (1)	AS-67875-01 (1)	AS-67875-01 (2)	AS-67875-01 (2)	AS-67875-01 (2)	AS-67875-01 (2)
7b		NOX Burner Retainer Rod - Before F0299	AE-61715-01	AE-61715-01	AE-61715-01	AE-61715-02	AE-61715-02	AE-61715-02	AE-61715-02
7b		NOX Insert Retainer - On or After F0299	AE-67872-01	AE-67872-01	AE-67872-01	AE-67872-02	AE-67872-02	AE-67872-02	AE-67872-02
		Burner Support - Before F1399	AE-61577-01	AE-61577-01	AE-61577-01	AE-61577-02	AE-61577-02	AE-61577-02	AE-61577-02
		Burner Support - On or After F1399	AE-60997-01	AE-60997-01	AE-60997-01	AE-60997-02	AE-60997-02	AE-60997-02	AE-60997-02
8		Burner Support Bracket - Before F1399 (2)	AE-61588-01	AE-61588-01	AE-61588-01	AE-61588-01	AE-61588-01	AE-61588-01	AE-61588-01
8		Burner Support Bracket - On or After F1399 (2)	AE-61588-02	AE-61588-02	AE-61588-02	AE-61588-02	AE-61588-02	AE-61588-02	AE-61588-02
9	Stk	Manifold (w/o Orifices)	AS-61663-01	AS-61663-01	AS-61663-01	AS-61663-02	AS-61663-02	AS-61663-02	AS-61663-02
		Burner Orifice - Natural Gas	See Orifice Selection Chart						
		Burner Orifice - LP	See Orifice Selection Chart						
		Number of Orifices	(2)	(2)	(2)	(3)	(3)	(3)	(3)

No.	Notes	MODEL HEATING CAPACITY VARIATION BLOWER DESIGNATION AIRFLOW	UGPH	UGPH	UGPH	UGPH	UGPH	UGPH	UGPH
			10 A M E	10 B R J	10 B R M	12 A R J	12 A R M	15 A R J	
HEAT EXCHANGER, BURNER / MANIFOLD									
23	Stk	Heat Exchanger Assembly	AS-61579-07	AS-61579-04	AS-61579-04	AS-61579-05	AS-61579-05	AS-61579-06	
		Heat Exchanger Bracket	AE-67846-02	AE-67846-02	AE-67846-02	AE-67846-02	AE-67846-02	AE-67846-02	
6	Stk	Burner Tube w/Shield - Before F1399	75-22840-02 (4)	75-22840-02 (4)	75-22840-02 (4)	75-22840-02 (5)	75-22840-02 (5)	75-22840-02 (6)	
6	Stk	Burner Assembly - On or After F1399 (See Note 3)	AS-60993-04	AS-60993-04	AS-60993-04	AS-60993-05	AS-60993-05	AS-60993-06	
7a		NOX Burner Insert - Before F0299	AE-61771-01 (4)	AE-61771-01 (4)	AE-61771-01 (4)	AE-61771-01 (5)	AE-61771-01 (5)	AE-61771-01 (6)	
7a		NOX Burner Insert (Cross X) - On or After F0299	AS-67875-01 (3)	AS-67875-01 (3)	AS-67875-01 (3)	AS-67875-01 (4)	AS-67875-01 (4)	AS-67875-01 (5)	
7b		NOX Burner Retainer Rod - Before F0299	AE-61715-03	AE-61715-03	AE-61715-03	AE-61715-05	AE-61715-05	AE-61715-06	
7b		NOX Insert Retainer - On or After F0299	AE-67872-03	AE-67872-03	AE-67872-03	AE-67872-04	AE-67872-04	AE-67872-05	
		Burner Support - Before F1399	AE-61577-03	AE-61577-03	AE-61577-03	AE-61577-04	AE-61577-04	AE-61577-05	
		Burner Support - On or After F1399	AE-60997-03	AE-60997-03	AE-60997-03	AE-60997-04	AE-60997-04	AE-60997-05	
8		Burner Support Bracket - Before F1399 (2)	AE-61588-01	AE-61588-01	AE-61588-01	AE-61588-01	AE-61588-01	AE-61588-01	
8		Burner Support Bracket - On or After F1399 (2)	AE-61588-02	AE-61588-02	AE-61588-02	AE-61588-02	AE-61588-02	AE-61588-02	
9	Stk	Manifold (w/o Orifices)	AS-61663-03	AS-61663-03	AS-61663-03	AS-61663-04	AS-61663-04	AS-61663-05	
		Burner Orifice - Natural Gas	See Orifice Selection Chart						
		Burner Orifice - LP	See Orifice Selection Chart						
		Number of Orifices	(4)	(4)	(4)	(5)	(5)	(6)	

No.	Notes	MODEL GAS CODE (TYPE)	UGPH BR (HSI)	UGPH BS (HSI)	UGPH BT (HSI)	UGPH CA (HSI)	UGPH CE (HSI)	UGPH CV (HSI)	UGPH CW (HSI)
GAS CONTROLS									
25	Stk	Gas Valve - Natural Gas	60-105055-01	60-105055-01	60-22525-11	60-22525-11	60-105055-01	60-105055-01	60-105055-01
25	Stk	Gas Valve - LP	See Note 1	See Note 1	See Note 1	See Note 1	See Note 1	See Note 1	See Note 1
26	Stk	Integrated Furnace Control Board (IFC)	62-22737-06	62-22694-01	62-22737-07	62-22694-01	62-22694-02	62-22694-03	62-22737-08
	Stk	Flame Sensor	62-23543-01	62-23543-01	62-23543-01	62-23543-01	62-23543-01	62-23543-01	62-23543-01
27	Stk	Ignitor - HSI	62-22868-02	62-22868-02	62-22868-02	62-22868-02	62-22868-02	62-22868-02	62-22868-02
		Ignitor Bracket - HSI	AE-61581-01	AE-61581-01	AE-61581-01	AE-61581-01	AE-61581-01	AE-61581-01	AE-61581-01
		Ignitor Shield	AE-61627-01	AE-61627-01	AE-61627-01	AE-61627-01	AE-61627-01	AE-61627-01	AE-61627-01
LP Conversion Kit:									
	Stk	U.S. Models	FP-15	FP-15	FP-15	FP-15	FP-15	FP-15	FP-15
	Stk	Canadian Models	FP-04	FP-04	FP-04	FP-04	FP-04	FP-04	FP-04

No.	Notes	MODEL GAS CODE (TYPE)	UGPH CX (HSI)	UGPH CY (HSI)	UGPH DA (HSI)	UGPH DB (HSI)	UGPH DC (HSI)	UGPH DF (HSI)	UGPH DG (HSI)
GAS CONTROLS									
25	Stk	Gas Valve - Natural Gas	60-105055-01	60-105055-01	60-23490-01	60-23490-01	60-105055-01	60-105055-01	60-23490-01
25	Stk	Gas Valve - LP	See Note 1	See Note 1	See Note 1	See Note 1	See Note 1	See Note 1	See Note 1
26	Stk	Integrated Furnace Control Board (IFC)	62-22737-10	62-22694-11	62-22737-08	62-22694-11	62-24044-01	62-24084-02	62-24084-02
	Stk	Flame Sensor	62-23543-01	62-23543-01	62-23543-01	62-23543-01	62-23543-01	62-23543-01	62-23543-01
27	Stk	Ignitor - HSI	62-22868-02	62-22868-02	62-22868-02	62-22868-02	62-22868-02	62-22868-02	62-22868-02
		Ignitor Bracket - HSI	AE-61581-01	AE-61581-01	AE-61581-01	AE-61581-01	AE-61581-01	AE-61581-01	AE-61581-01
		Ignitor Shield	AE-61627-01	AE-61627-01	AE-61627-01	AE-61627-01	AE-61627-01	AE-61627-01	AE-61627-01
LP Conversion Kit:									
	Stk	U.S. Models	FP-15	FP-15	FP-15	FP-15	FP-15	FP-15	FP-15
	Stk	Canadian Models	FP-15	FP-15	FP-04	FP-04	FP-15	FP-15	FP-04

No.	Notes	MODEL GAS CODE (TYPE)	UGPH DH (HSI)	UGPH EF (HSI)	UGPH EG (HSI)	UGPH EM (HSI-Mini)	UGPH EQ (HSI-Mini)	UGPH EU (HSI)	UGPH EV (HSI)
GAS CONTROLS									
25	Stk	Gas Valve - Natural Gas	60-23490-01	60-105055-01	60-23490-01	60-105055-01	60-23490-01	60-24290-01	60-24290-01
25	Stk	Gas Valve - LP	See Note 1	See Note 1	See Note 1	See Note 1	See Note 1	See Note 1	See Note 1
26	Stk	Integrated Furnace Control Board (IFC)	62-24044-01	62-24133-01	62-24133-01	62-24257-02	62-24257-02	62-24044-01	62-24084-01
	Stk	Flame Sensor	62-23543-01	62-23543-01	62-23543-01	62-23543-01	62-23543-01	62-23543-01	62-23543-01
27	Stk	Ignitor - HSI	62-22868-02	62-22868-02	62-22868-02	N/A	N/A	62-22868-02	62-22868-02
	Stk	Ignitor - Silicon Nitride	N/A	62-24134-01	62-24134-01	N/A	N/A	N/A	N/A
		Ignitor Bracket - HSI	AE-61581-01	AE-61581-01	AE-61581-01	N/A	N/A	AE-61581-01	AE-61581-01
		Ignitor Bracket - HSI (Silicon Nitride)	N/A	AE-61958-01	AE-61958-01	N/A	N/A	N/A	N/A
		Ignitor Shield	AE-61627-01	AE-61627-01	AE-61627-01	N/A	N/A	AE-61627-01	AE-61627-01
	Stk	Mini Ignitor w/Metal Shield	N/A	N/A	N/A	62-24305-02	62-24305-02	N/A	N/A
		Mini Ignitor Bracket	N/A	N/A	N/A	AE-61958-04	AE-61958-04	N/A	N/A
LP Conversion Kit:									
	Stk	U.S. Models	FP-15	FP-15	FP-15	FP-15	FP-15	FP-15	FP-15
	Stk	Canadian Models	FP-04	FP-15	FP-04	FP-15	FP-04	FP-04	FP-04

No.	Notes	MODEL GAS CODE (TYPE)	UGPH DJ (IP)	UGPH FD (DSI)	UGPH FE (DSI)	UGPH FF (DSI)	UGPH FG (DSI)	UGPH FU (DSI)	
GAS CONTROLS									
25	Stk	Gas Valve - Natural Gas	60-22526-01	60-105055-01	60-105055-01	60-23490-01	60-23490-01	60-105055-01	
25	Stk	Gas Valve - LP	See Note 2	See Note 1	See Note 1	See Note 1	See Note 1	See Note 1	
26	Stk	Integrated Furnace Control Board (IFC)	62-24202-01	62-24140-02	62-24136-03	62-24140-02	62-24136-03	62-24140-04	
	Stk	Flame Sensor	N/A	62-23543-01	62-23543-01	62-23543-01	62-23543-01	62-23543-01	
	Stk	Ignitor - DSI	N/A	62-24164-01	62-24164-01	62-24164-01	62-24164-01	62-24164-01	
	3	Ignitor Bracket - DSI (See Note 3)	N/A	AE-61885-02	AE-61885-02	AE-61885-02	AE-61885-02	AE-61885-02	
		Ignitor Shield	N/A	AE-61627-01	AE-61627-01	AE-61627-01	AE-61627-01	AE-61627-01	
		Pilot Assembly	62-24203-01	N/A	N/A	N/A	N/A	N/A	
		Pilot Shield	AE-61757-01	N/A	N/A	N/A	N/A	N/A	
		Pilot Bracket	AE-61658-02	N/A	N/A	N/A	N/A	N/A	
LP Conversion Kit:									
	Stk	U.S. Models		FP-15	FP-15	FP-15	FP-15	FP-15	
	Stk	Canadian Models	N/A	FP-15	FP-15	FP-04	FP-04	FP-15	

80% GAS FURNACE - ORIFICE SELECTION CHART - NATURAL GAS

CAUTION: Selection of the correct Natural Gas Orifice requires the following information for the specific installation:

- 1) Altitude in of the installation (ft.).
- 2) Average energy content of the Natural Gas fuel from the local supplier (BTU/cu. ft.).

For detailed information and instructions for Orifice selection, see the Gas Furnace LP Conversion Kit Index 92-21519-59 and the latest edition of the National Fuel Gas Code Handbook, or the National Standard of Canada, Natural Gas and Propane Installation Code, CAN B149.1.

CAUTION: This information is provided for replacement purposes only. Conversion for operation at High Altitude must be done using the kit specified on the product specification sheet for the unit.

NOTE: This Orifice sizing chart is based on 25,000 BTU/HR per burner.

NOTE: Factory installed orifices are calculated and sized based on a Natural Gas heating value of 1075 BTU/cu. ft. and an elevation of 0 - 3000 ft.

Energy Value (BTU/cu. ft.)	Elevation (ft.)							
	0 - 1999	2000 - 2999	3000 - 3999	4000 - 4999	5000 - 5999	6000 - 6999	7000 - 7999	8000 - 8999
850	62-22175-38	62-22175-39	62-22175-40	62-22175-41	62-22175-41	62-22175-42	62-22175-42	62-22175-43
900	62-22175-40	62-22175-41	62-22175-42	62-22175-42	62-22175-42	62-22175-43	62-22175-43	62-22175-44
975	62-22175-41	62-22175-42	62-22175-42	62-22175-42	62-22175-43	62-22175-43	62-22175-44	62-22175-44
1075	62-22175-42	62-22175-42	62-22175-43	62-22175-43	62-22175-43	62-22175-44	62-22175-44	62-22175-45
1170	62-22175-43	62-22175-44	62-22175-44	62-22175-44	62-22175-45	62-22175-45	62-22175-46	62-22175-47

80% GAS FURNACE - ORIFICE SELECTION CHART - LP

CAUTION: Selection of the correct LP Orifice requires the altitude of the specific installation (ft.).

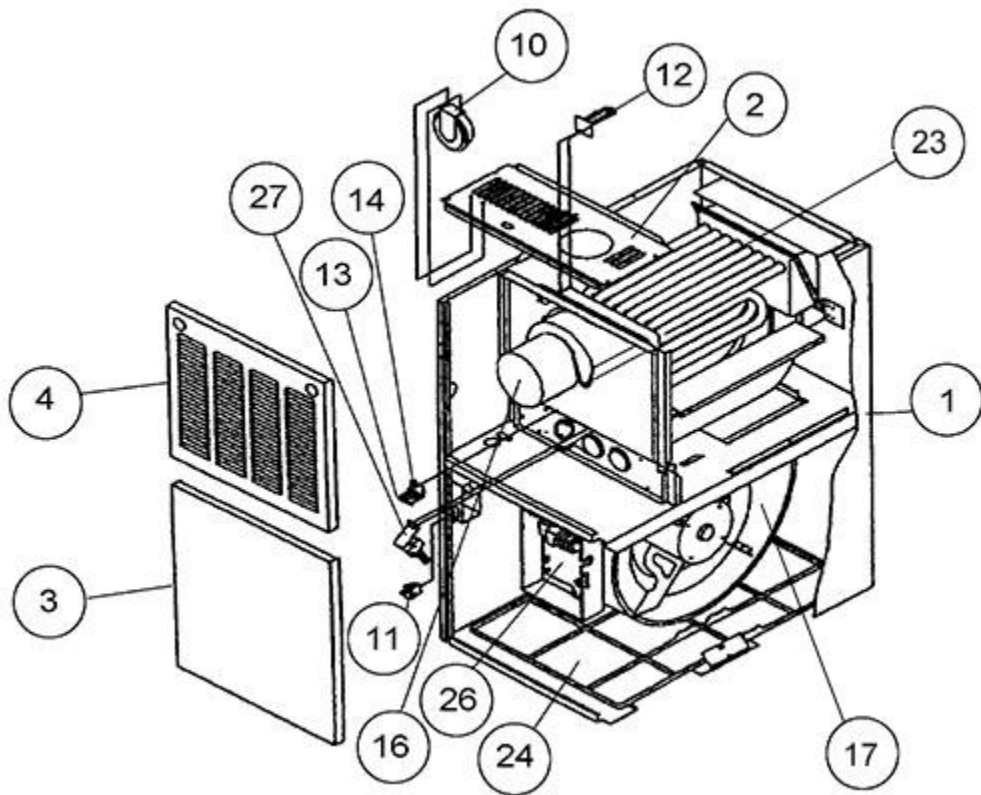
For detailed information and instructions for Orifice selection, see the Gas Furnace LP Conversion Kit Index 92-21519-59 and the latest edition of the National Fuel Gas Code Handbook (NFG), or the National Standard of Canada, Natural Gas and Propane Installation Code, CAN B149.1.

CAUTION: This information is provided for replacement purposes only. Conversion to LP or for operation at High Altitude should be done the kit(s) specified on the product specification sheet for the unit.

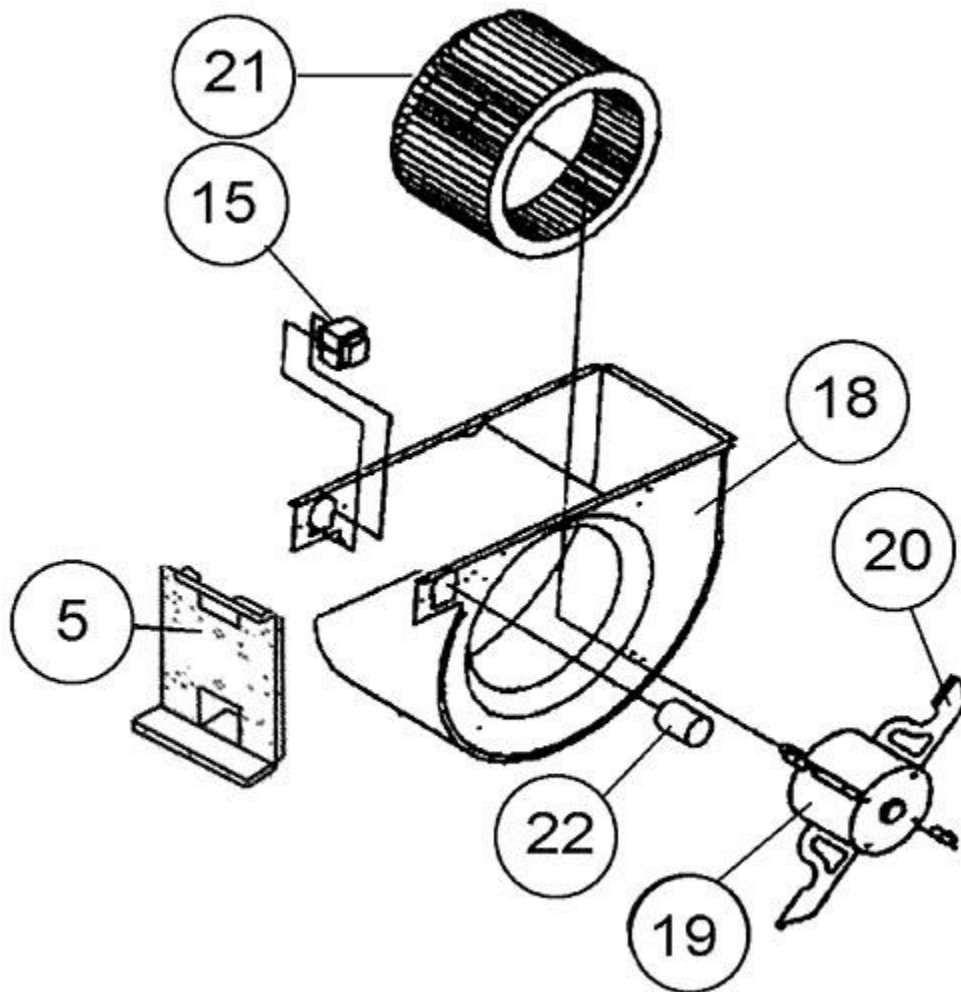
NOTE: This Orifice sizing chart is based on 25,000 BTU/HR per burner. Also, the chart is developed using the specified pressure setting of 10 in. water column instead of the 11.0 in water column used by the NFG and CANB149.1.

NOTE: Orifices supplied in the LP Conversion Kit are calculated and sized based on an altitude of 0 - 4000 ft.

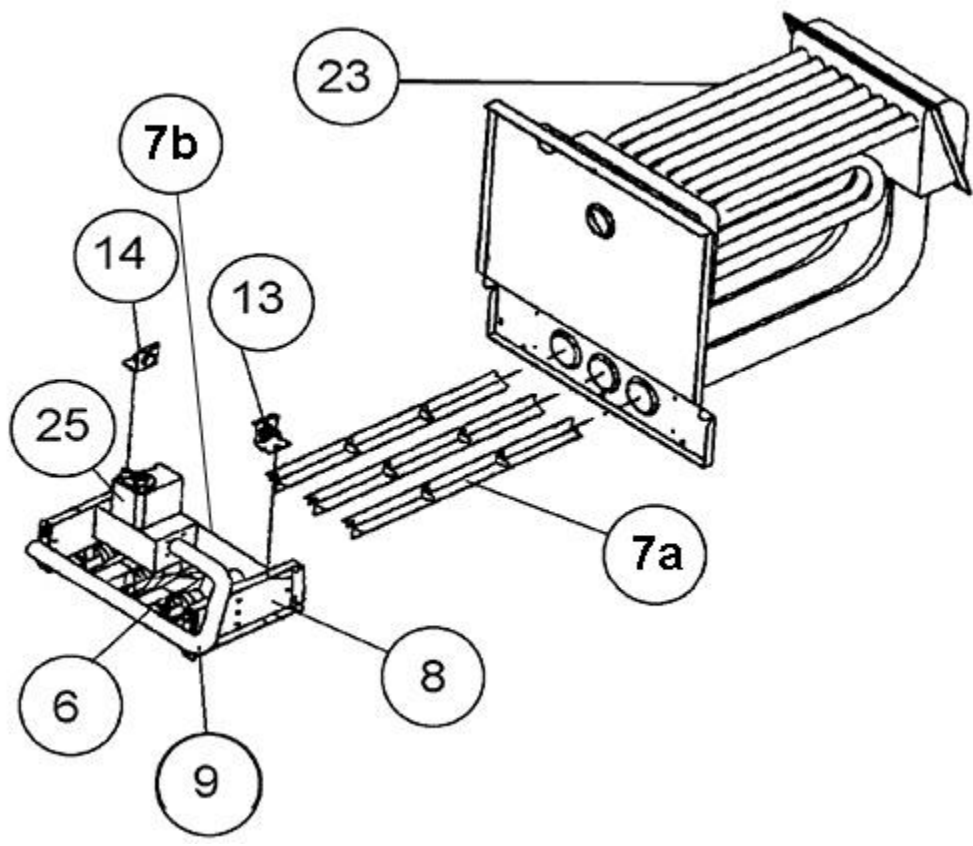
Elevation (ft.)	Orifice							
0 - 2000	62-22175-54							
2001 - 3000	62-22175-54							
3001 - 4000	62-22175-54							
4001 - 5000	62-22175-54							
5001 - 6000	62-22175-54							
6001 - 7000	62-22175-54							
7001 - 8000	62-22175-55							
8001 - 9000	62-22175-55							
9001 - 10000	62-22175-55							



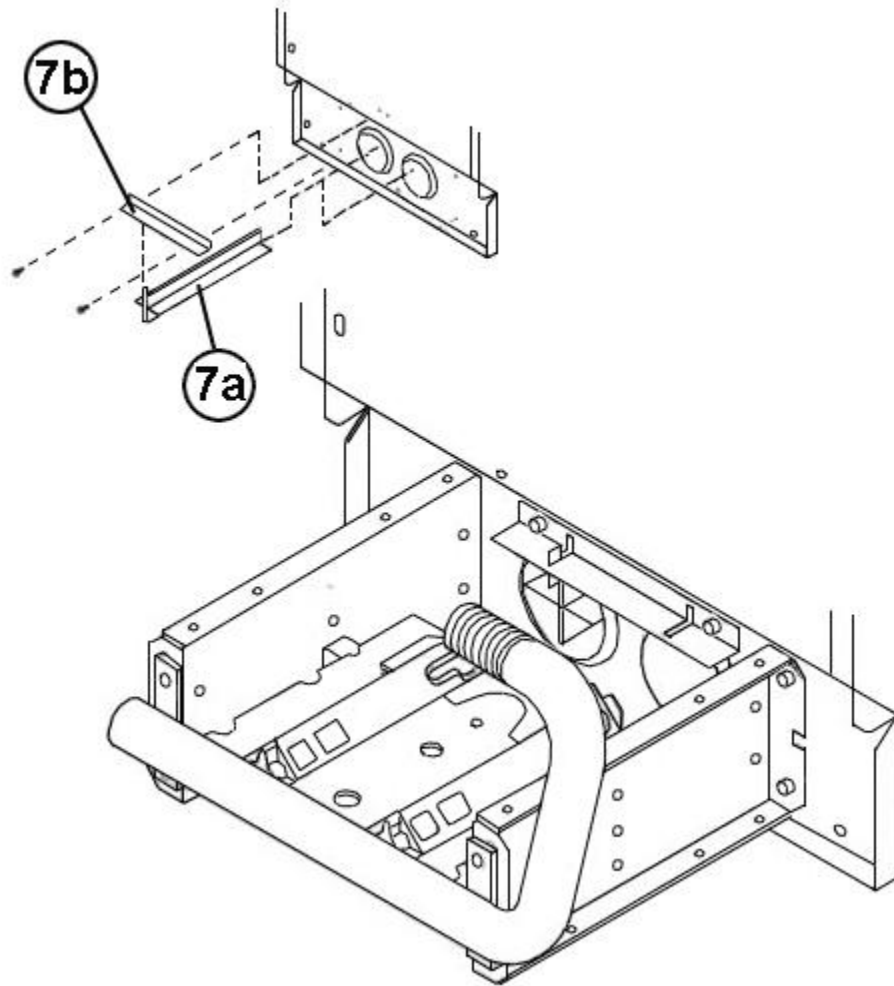
Exploded View



Blower Assembly



Burner Assembly



NOX Insert Assembly after F0299

NOTES

Stk It is recommended that stock be maintained for this part.

N/A Not Applicable

- 1 Order Gas Valve for Natural Gas along with LP Conversion Kit. (If the original valve has been replaced, order the spring kit for the replacement valve.)
- 2 Order specified LP Conversion Kit
- 3 For units with DSI ignition, and date codes before F1506, it is recommended that a new Igniter Bracket (AE-61885-02, with three mounting holes) be ordered.