

# 150# Malleable Fittings • Spec Sheet

## CHINESE

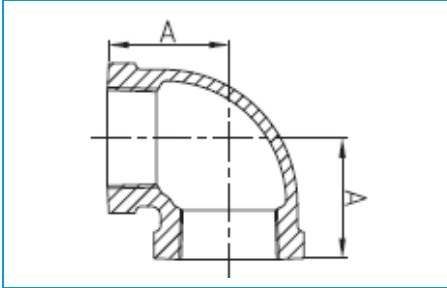


- Black & Galvanized
- Material: ASTM A197/A197M
- Dimensions:
  - ASME B16.3 covering 90° Elbows, 45° Elbows, Couplings, Reducers, 90° Street Elbows, 45° Street Elbows, Caps, Tees
  - ASME B16.39 covering Unions
  - ASME B16.14 covering Bushings, Plugs
- Threads: ASME B1.201
- Available: 1/8" through 6"
- Approvals: UL & FM approved

# 150# Malleable Fittings • Spec Sheet

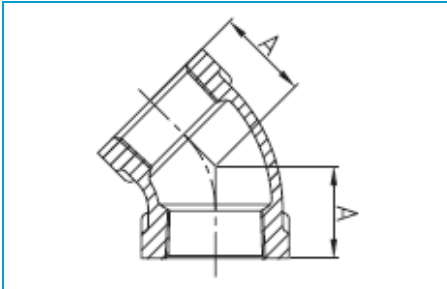
## CHINESE

90 Elbow



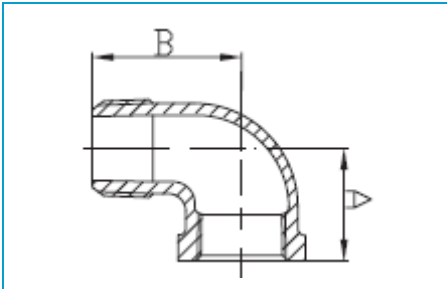
Size	1/8	1/4	3/8	1/2	3/4	1
A	0.69	0.81	0.95	1.12	1.31	1.50
Size	1-1/4	1-1/2	2	2-1/2	3	4
A	1.75	1.94	2.25	2.70	3.08	3.79
Size	5	6				
A	4.50	5.13				

45 Elbow



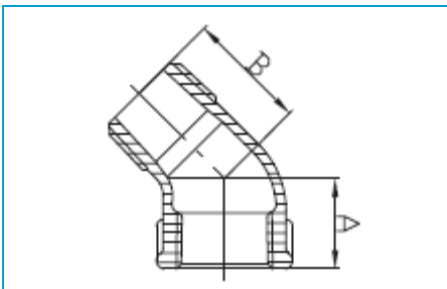
Size	1/8	1/4	3/8	1/2	3/4	1
A	0.63	0.73	0.80	0.88	0.98	1.12
Size	1-1/4	1-1/2	2	2-1/2	3	4
A	1.29	1.43	1.68	1.95	2.17	2.61
Size	5	6				
A	3.05	3.46				

90 Street Elbow



Size	1/8	1/4	3/8	1/2	3/4	1
A	0.69	0.81	0.95	1.12	1.31	1.50
B	1.00	1.19	1.44	1.62	1.89	2.14
Size	1-1/4	1-1/2	2	2-1/2	3	4
A	1.75	1.94	2.25	2.70	3.08	3.79
B	2.45	2.69	3.26	3.86	4.52	5.69

45 Street Elbow

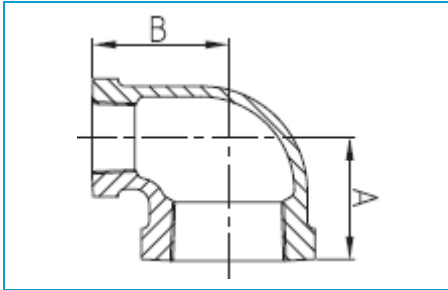


Size	1/8	1/4	3/8	1/2	3/4	1
A	0.63	0.73	0.80	0.88	0.98	1.12
B	0.83	0.94	1.03	1.15	1.29	1.47
Size	1-1/4	1-1/2	2	2-1/2	3	4
A	1.29	1.43	1.68	1.95	2.17	2.61
B	1.71	1.88	2.22	2.57	3.00	3.70

# 150# Malleable Fittings • Spec Sheet

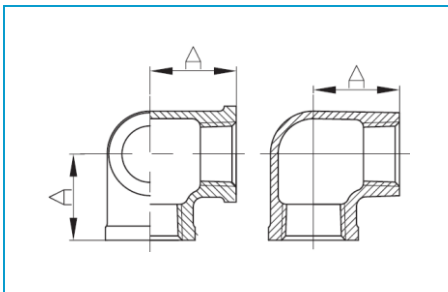
## CHINESE

Reducing Elbow



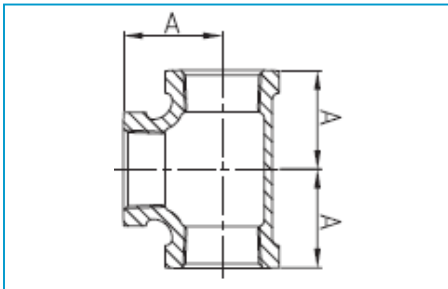
Size	1/4x1/8	3/8x1/8	3/8x1/4	1/2x1/4	1/2x3/8	3/4x1/4	3/4x3/8	3/4x1/2
A	0.74	0.81	0.88	0.97	1.04	1.05	1.12	1.20
B	0.76	0.85	0.90	0.98	1.03	1.08	1.13	1.22
Size	1x1/2	1x3/4	1-1/4x1/2	1-1/4x3/4	1-1/4x1	1-1/2x1/2	1-1/2x3/4	1-1/2x1
A	1.26	1.37	1.34	1.45	1.58	1.38	1.52	1.65
B	1.40	1.45	1.53	1.62	1.67	1.64	1.75	1.80
Size	1-1/2x1-1/4	2x1/2	2x3/4	2x1	2x1-1/4	2x1-1/2	2-1/2x1-1/4	
A	1.82	1.48	1.60	1.73	1.90	2.02	1.99	
B	1.88	1.87	1.97	2.02	2.10	2.16	2.36	
Size	2-1/2x1-1/2	2-1/2x2	3x1-1/2	3x2	3x2-1/2	4x2	4x3	
A	2.16	2.39	2.29	2.52	2.83	2.72	3.30	
B	2.51	2.60	2.84	2.89	2.99	3.43	3.60	

Side Outlet Elbow



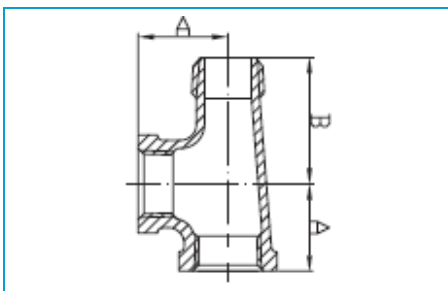
Size	1/2	3/4
A	1.10	1.30

Tee



Size	1/8	1/4	3/8	1/2	3/4	1
A	0.69	0.81	0.95	1.12	1.31	1.50
Size	1-1/4	1-1/2	2	2-1/2	3	4
A	1.75	1.94	2.25	2.70	3.08	3.79
Size	5	6				
A	4.50	5.13				

Street Service Tee



Size	1/2	3/4	1
A	1.12	1.31	1.50
B	1.62	1.89	2.14