

Aprilaire[®]

Zone Dampers

Robust Design. Leading Performance.



Robust Design. Simplified Installs. All Applications.

World Class Quality

- + Rigorous cycle testing assures years of reliable performance
- + Tested in extreme temperatures (over 140°F) to simulate attic summer conditions
- + Actuator design proven successful in thousands of system installs
- + Packaging and product design for rough handling exceed shipping requirements of the ISTA 1A drop test
- + Five-year warranty

Fail Safe Design

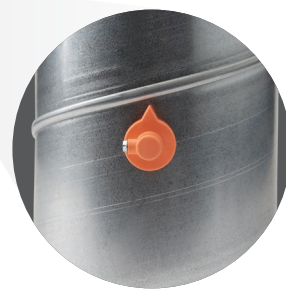
- + Zone damper normally open; powers closed, allowing conditioned air to continue to flow if mechanical motor reaches end of service life

Blade Positioning Indicator

- + Orange indicator—easy to read from a distance
- + Open and closed position clearly indicated
- + Orange position indicator on both sides of damper
- + Simple, visual system check and troubleshooting

Flex Duct Integration

- + Raised actuator allows flex duct to encase entire damper
- + Damper shell extended beyond actuator to provide ample space to secure flex duct (zip tie)



Back View of Damper



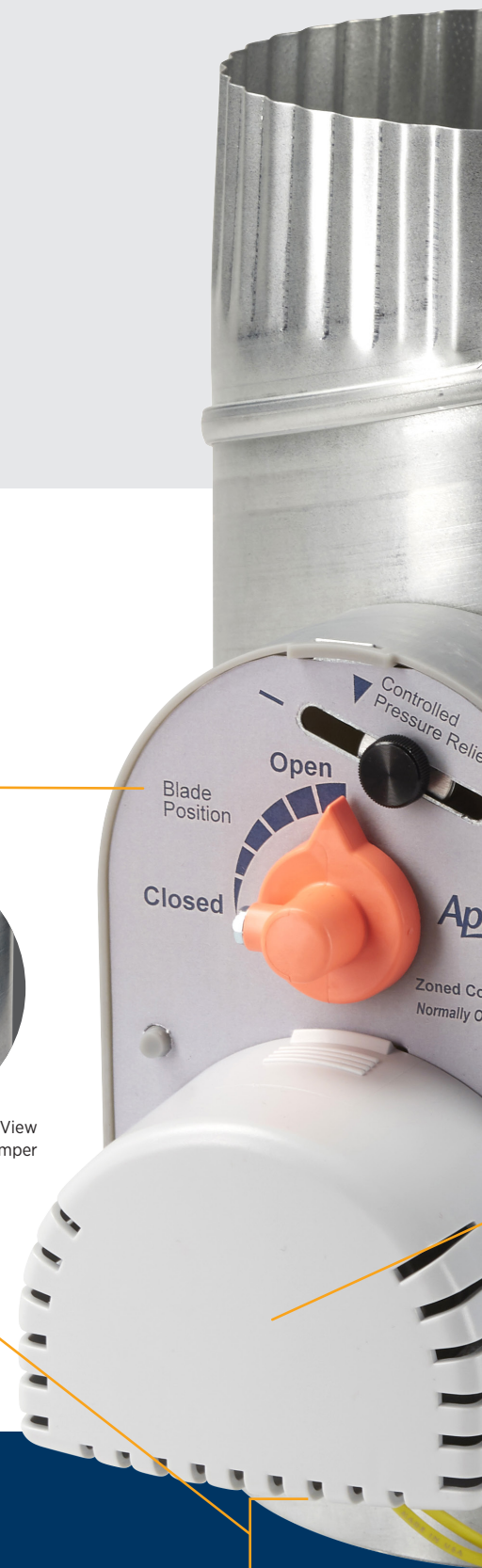
Round



Rectangular



Slip-In





Bypass Settings

- + Thumbscrew adjustable, no tools required
- + Factory set to 0% bypass
- + Standard setting indicated by ▲, approximate 15% bleed
- + Controlled Pressure Relief is infinitely adjustable for peak system performance

One Piece Assembly

- + Remove motor and actuator as one assembly
- + Assembly replacement while damper shell remains in duct
- + Simple, labor saving design

Attic Insulation Protection

- + Insulation proof—all openings secured preventing spray in insulation from entering actuator and causing problems

Round Damper Blade Design

- + Gasket material minimizes air bypass when blade is closed
- + Common plastic bearing stabilizes damper blade
- + Hex shaft allows secure blade fastening

Robust Motor Design

- + Start-up torque dampened with torsion lever for extended life
- + Motor covered for improved appearance, cover tightly secured
- + Life tested to extreme usage in attic temperatures

2-Wire Connection

- + Simplifies installation—fewer wires to organize

Ventilation
(black label)



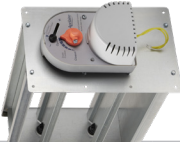
NORMALLY-CLOSED
POWER **OPEN**



NORMALLY-OPEN
POWER **CLOSED**

Zoning
(white label)

		NOMINAL DIAMETER											
Round Dampers		4"	5"	6"	7"	8"	9"	10"	12"	14"	16"	18"	20"
Size & Stock No.*		(102mm)	(127mm)	(153mm)	(178mm)	(200mm)	(229mm)	(250mm)	(300mm)	(350mm)	(400mm)	(450mm)	(500mm)
	Zone Damper (Normally open/power closed)	-	-	6606	6607	6608	6609	6610	6612	6614	6616	6618	6620
	Ventilation Damper (Normally closed/power opened)	-	-	6506	-	6508	-	6510	-	-	-	-	-
	Barometric Pressure Relief (Air flow activated)	-	-	-	-	6908	-	6910	6912	6914	6916	-	-
	Static Pressure Relief (Power activated)	-	-	-	-	6208	-	6210	6212	6214	6216	6218	6220
	Round Slip-in Damper (Normally open/power closed)	6704	6705	6706	6707	6708	-	6710	-	-	-	-	-

		NOMINAL WIDTH											
Rectangular Dampers		8"	10"	12"	14"	16"	18"	20"	22"	24"	26"	28"	30"
Size & Stock No.**		(200mm)	(250mm)	(300mm)	(350mm)	(400mm)	(450mm)	(500mm)	(550mm)	(600mm)	(650mm)	(700mm)	(750mm)
	Side Mount	6721	6722	6723	6724	6725	6726	6727	6728	6729	6730	6731	6733
	8" (200mm)	-	6732	6733	6734	6735	6736	6737	6738	6739	6740	6741	6742
	10" (250mm)	-	-	6743	6744	6745	6746	6747	6748	6749	6750	6751	6752
	12" (300mm)	-	-	-	6754	6755	6756	6757	6758	6759	6760	6761	6762
	14" (350mm)	-	-	-	-	6763	6764	6765	6766	6767	6768	6769	6770
	16" (400mm)	-	-	-	-	-	6771	6772	6773	6774	6775	6776	6777
	18" (450mm)	-	-	-	-	-	-	6778	6779	6780	6781	6782	6783
	20" (500mm)	-	-	-	-	-	-	-	6784	6785	6786	6787	6788
	22" (550mm)	-	-	-	-	-	-	-	-	6789	6790	6791	6792
	24" (600mm)	-	-	-	-	-	-	-	-	-	6793	6794	6795
26" (650mm)	-	-	-	-	-	-	-	-	-	-	6796	6797	
28" (700mm)	-	-	-	-	-	-	-	-	-	-	-	6798	
30" (750mm)	-	-	-	-	-	-	-	-	-	-	-	-	
8" (200mm)	Bottom Mount	6721	6812	6813	6814	6815	6816	6817	6818	6819	-	-	-
10" (250mm)	Motor mounted on long dimension	-	6732	6823	6824	6825	6826	6827	6828	6829	-	-	-
12" (300mm)	-	-	-	6743	6834	6835	6836	6837	6838	6839	-	-	-