



Toester Undercounter Fan Coil Installation and Operation Manual

Installation:

- Toester fan coil space heaters are suitable for connection to hot water supply at any pressure up to 125 P.S.I. maximum water temperature should not exceed 200°F.
- Building codes and plumbing regulations may vary. Check local codes and regulations before determining proper application and installation.
- Cut an access panel in the bottom shelf of the cabinet where the unit will be located. Starting at the right edge of the selected location, cut an opening in the bottom of the cabinet as instructed below:

Model T45/T68 at least 17" x 17-1/2" (see figure 1)

Model T1012/T1113 at least 23" x 17-1/2" (see figure 2)

Refer to Figures 1 & 2 for pipe location and all unit dimensions. Cabinet details may vary for each installation.

- Lift the Toester out through the access door and sweat on fittings.

Piping:

- The piping to the unit will usually be copper or any other locally approved piping. Accessible 1/2" sweat fittings are provided on the unit itself. An optional flexible stainless steel connector kit with shut-off valves is available for connecting the unit to any type of piping system.
- All piping systems should be designed by a technician with experience in the various piping arrangements that work with this type of unit.
- As with any system employing circulated water, the pipes passing through unheated spaces should be insulated.
- When using mono-flo or venturi fittings, we suggest placements of a ball valve just after the supply take-off and before the return is connected.

Figure 1 - T45-HA / T68-HA

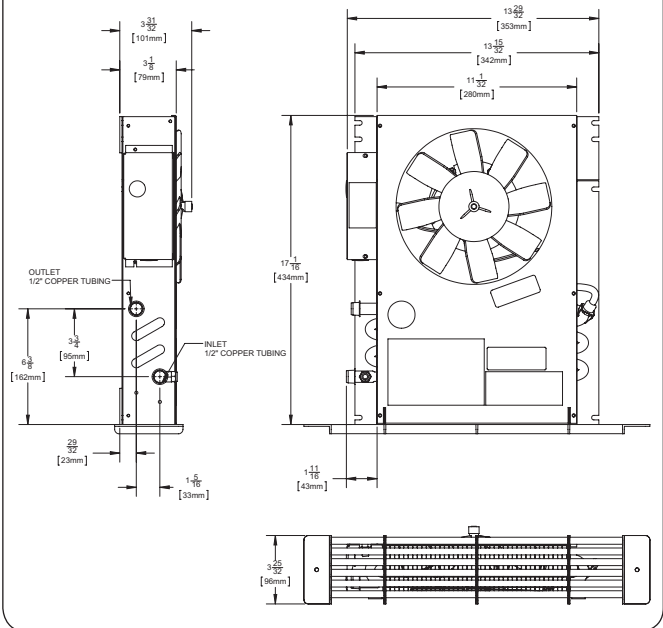
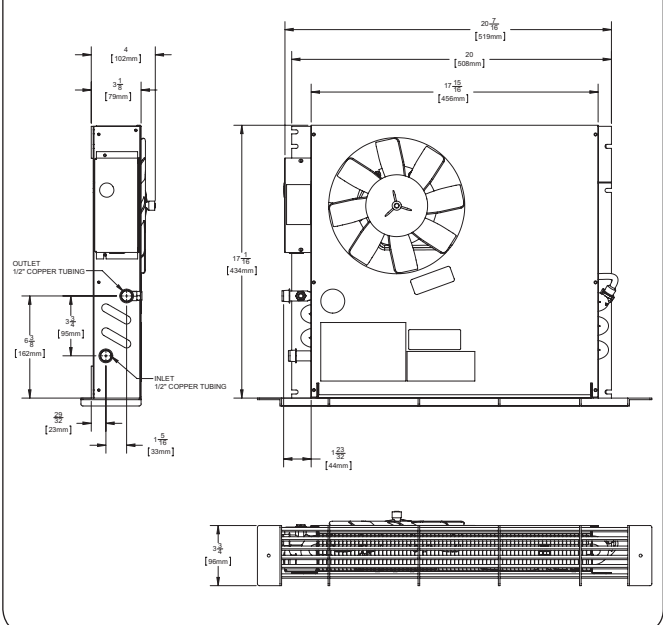


Figure 2 - T1012-HA / T1113-HA



Piping: Hot Water Boiler

- The unit supply line should be taken from the boiler side beyond any flo-control valve. If the system being used is a gravity-flow or cast-iron hot water system, a separate circuit must be installed.

Piping: Water Heater

- To install correctly, a technician with knowledge of piping arrangements and back-flo valves must design the piping system.



Wiring the Unit

- A field wiring connection is provided on the unit. Connect wires at this point only. See wiring diagrams below.
- The unit is manufactured with a built-in factory wired aquastat with a set point of 140°F on and 110°F off. The aquastat may be disabled in the field if not required.
- Unit is pre-wired from the factory on Hi speed. Unit may be optionally installed with a remote mounted line voltage thermostat.
- Speed switch (included) and/or a line voltage thermostat. (see figure 3)
- All wiring should be done to all local and national codes.

Completion

- Secure unit to floor through holes on perimeter of the bottom plate (screws provided).
- Bleed the unit, secure the access panel; and install front grille cover.

Figure 3 - Wiring Diagram T45-HA / T68-HA / T1012-HA / T1113-HA

FOR USE WITH MODELS

- TOESTER: T45-HA, T45-WM-AR, T45-WM-AS, T68-HA, T68-WM-AR, T68-WM-AS, T12-HA
- KICKSTER: K3-J, K4-J

