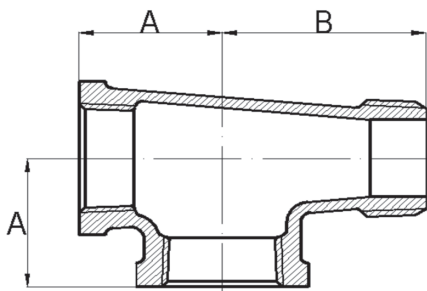


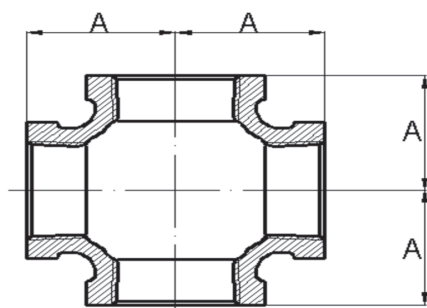
Malleable Iron Fittings

Service Tee



Size (in.)	Part Number		A in Inches	B in Inches
	Black	Galv		
3/4	IBSTF		1.31	1.89
1	IBSTG		1.5	2.14
1-1/2	IBSTJ		1.94	2.69

Cross



Size (in.)	Part Number		A in Inches
	Black	Galv	
1/4	IBCRB	IGCRB	0.81
3/8	IBCRC		0.95
1/2	IBCRD	IGCRD	1.12
3/4	IBCRF	IGCRF	1.31
1	IBCRG	IGCRG	1.5
1-1/4	IBCRH	IGCRH	1.75
1-1/2	IBCRJ	IGCRJ	1.94
2	IBCRK	IGCRK	2.25
3	IBCRM		3.08