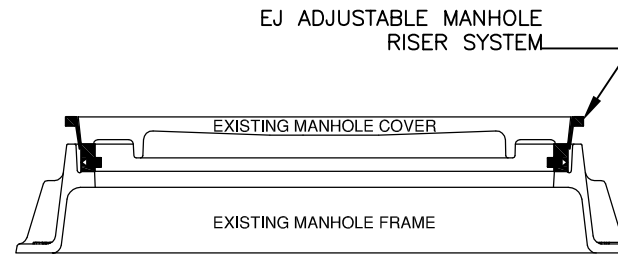
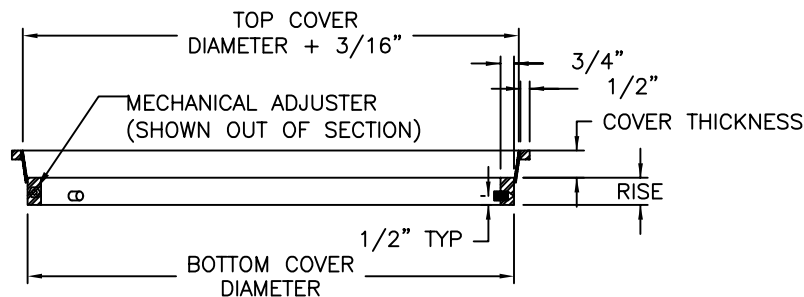
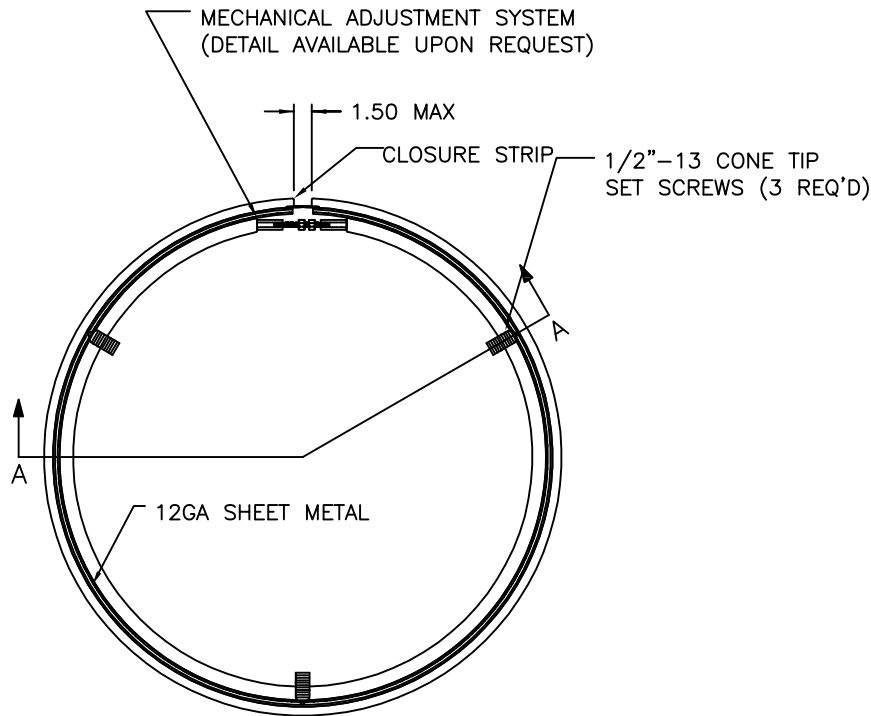


M5 Adjustable Steel Riser



**TYPICAL INSTALLATION
SHOWING LID IN RAISED POSITION**

NOTES:

- 1.) MATERIAL SHALL MEET OR EXCEED MINIMUM REQUIREMENTS OF ASTM A36 CARBON STEEL.
- 2.) MECHANICAL ADJUSTMENT STUD IS MADE OF TYPE 304 STAINLESS STEEL.
- 3.) ALL "M5" STYLE RISERS ARE FOR HEIGHT ADJUSTMENTS EQUAL TO OR LESS THAN THE THICKNESS OF THE MANHOLE COVER.
- 4.) EACH RISER IS CUSTOM FABRICATED FROM MEASUREMENTS PROVIDED WITH EACH ORDER. REQUIRED MEASUREMENTS INCLUDE THE FOLLOWING:
 - A. EXIST. MANHOLE COVER DIAMETER - TOP & BOTTOM
 - B. EXISTING MANHOLE COVER THICKNESS
 - C. REQUIRED HEIGHT OF ADJUSTMENT
- 5.) MINIMUM RECOMMENDED HEIGHT OF ADJUSTMENT FOR REPAVING PROJECTS IS 1".
- 6.) HEIGHT ADJUSTMENTS ARE AVAILABLE IN 1/4" INCREMENTS.
- 7.) DURING INSTALLATION CHECK FOR FULL BEARING OF LOWER FRAME SECTION ON EXISTING CASTING. OVERTIGHTENING ADJUSTMENT SYSTEM MAY CAUSE UPLIFTING OF RISER.
- 8.) DIMENSIONS MAY VARY TO MEET EXISTING FIELD CONDITIONS. ANY CHANGE IN DIMENSIONS SHALL BE APPROVED BY THE OWNER.
- 9.) AFTER FABRICATION, RISERS ARE COATED WITH EITHER A WATER BASED BITUMINOUS ASPHALT EMULSION PAINT OR BASF E-COAT W/ CHARCOAL BLACK TOPCOAT.
- 10.) AVAILABLE OPTIONS IN LIEU OF CONE POINT SET SCREWS INCLUDE "L" CLIPS WITH HEX HEAD BOLTS.
- 11.) SLOPED RISERS ARE ALSO AVAILABLE.

Product Number

M5 Riser

Design Features

- Materials
See Notes
- Design Load
H20
- Open Area
N/A
- Coating
See Notes
- √ Designates Machined Surface

Certification

-
-
-
- Country of Origin: USA

Drawing Revision

03/27/07 Designer: CJC
01/06/14 Revised By: BDD

Disclaimer

Weights (lbs/kg), dimensions (inches/mm) and drawings provided for your guidance. We reserve the right to modify specifications without prior notice.

CONFIDENTIAL: This drawing is the property of EJ Group, Inc. and embodies confidential information, registered marks, patents, trade secret information, and/or know-how that is the property of EJ Group, Inc. Copyright © 2011 EJ Group, Inc. All rights reserved.

Contact

800 626 4653
ejco.com