



147-123
Quantum™

Elongated Front, Pressure-Assist,
Two-Piece Toilet

Features

- Stylish contemporary design
- High performance, pressure-assist Flushmate III™ flushing technology
- Outstanding “one flush” performance
- 1.6 gpf / 6.0 lpf low water consumption
- 2-1/8" glazed trapway
- Large 9-7/8" x 12-1/4" water surface area
- 12" rough-in
- Commercial rated flushing systems with Map Test results over 600 grams
- Available in White and Standard Colors: Biscuit, Classic Bone
- Trip levers
 - Model 50 left hand, chrome plated metal
 - Model 50RH right hand, chrome plated metal
 - Model 47 push button actuator, chrome plated plastic (Consult price book for additional finishes)
- Upgrade with a color-match SmartClose™ or Primo™ toilet seat
- Outstanding protection — The Mansfield® limited lifetime warranty



Elongated Front



Model 147-123
Shown with SB1200
Primo™ toilet seat

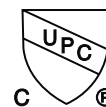
Model No.	Description	Approx. Wt.
147-123	Elongated front, (1.6 gpf/6.0 lpf) pressure-assist toilet. 12" rough-in. Includes tank trim and chrome plated metal trip lever. Less toilet seat and supply. Specify color.	94 lbs. (42.9 kg)
147	Elongated front, pressure-assist bowl only. 12" rough-in. Less toilet seat. Specify color.	51 lbs. (22.9 kg)
123	Pressure-assist tank and cover only with left hand, chrome plated metal trip lever. Less supply. Specify color.	43 lbs. (19.3 kg)
123RH	Same as model 123, except with right hand chrome plated, metal trip lever.	43 lbs. (19.3 kg)
122	Same as model 123, except with chrome plated plastic push button actuator.	43 lbs. (19.3 kg)
SB400	Elongated, SmartClose™ toilet seat.	5.5 lbs. (2 kg)
SB1200	Elongated, Primo™ toilet seat.	5.5 lbs. (2 kg)



Model 123RH Tank
Shown with
Model 50
right hand trip lever



Model 122 Tank
Durable, push button
actuator is the perfect
solution to high
volume usage areas



147-123

Quantum™

Elongated Front, Pressure-Assist, Two-Piece Toilet

Features & Upgrades

Toilet Trip Levers 45 and 49

Solid, durable front mount trip levers add attractive styling to this toilet. Trip lever 49 is the right hand version, used on Model 123 RH tank. Both trip levers are available in chrome plated (CH) finishes.



Push Button Actuator 47

Solid, durable, top mount, push button actuator adds functionality to this toilet. Push button actuator 47 is available in the following finishes: polished chrome (CH) and polished brass (PB).



Sloan Flushmate III™ Vessel

The Sloan Flushmate IV™ pressure-assist vessel. The pressurized flushing action is second to none. Superior performance over conventional two-piece, gravity flush toilets.



Add a Toilet Seat

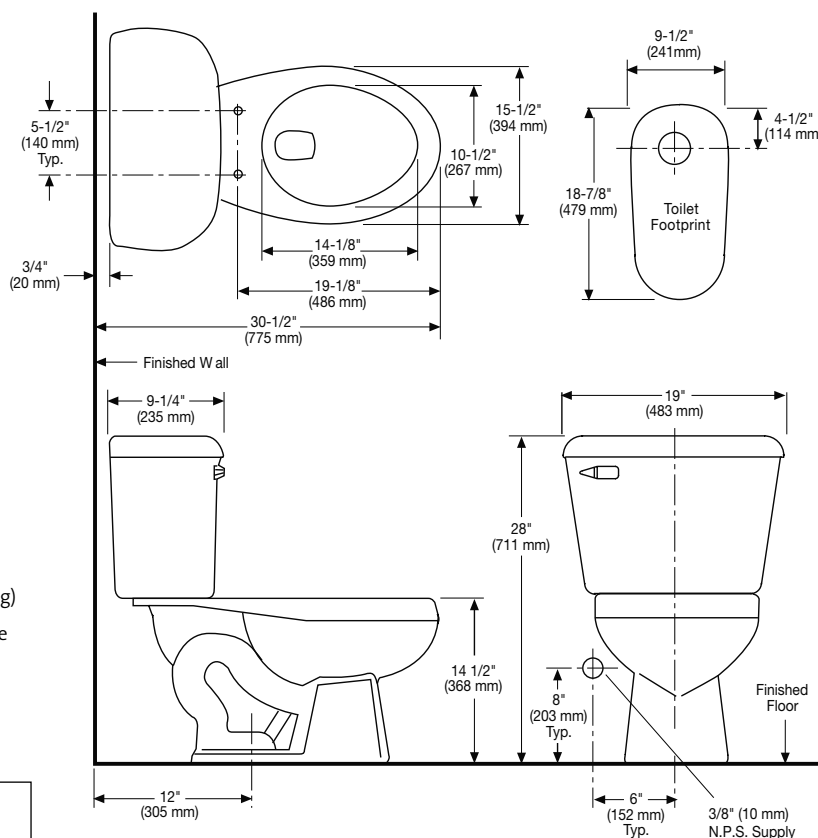
With a simple touch, Mansfield's newest SmartClose™ toilet seat closes gently and quietly. Or upgrade your toilet with a popular Primo™ toilet seat. Made of durable, high impact, heavy-duty plastic. For all applications — Get More, Get Mansfield®.



Technical Information

Specifications

Material	Vitreous China
Water Pressure Range	35 to 80 static P.S.I.
Flush System	Flushmate III™ Flushing Technology
Water Usage	1.6 gpf / 6.0 lpf
Water Surface Area	9-7/8" x 12-1/4"
Trap Diameter	2-1/8"
Trap Seal	2-7/8"
Rough-In	12"
Shipping Dimensions	Model 147 29-1/4" x 15-3/4" x 15" (743 mm x 400 mm x 381 mm) Model 122/123/123RH 21" x 11-3/8" x 17-3/4" (533 mm x 289 mm x 451 mm)
Shipping Weight	Model 147 - 53 lbs (24 kg) Model 122/123/123RH - 47 lbs (21 kg)
Warranty	Vitreous China - Limited Lifetime Vessel - Limited Ten Year Tank Trim - Limited One Year



These dimensions are nominal and are subject to change without prior notice.
Fixture performance and specifications meet or exceed, ANSI/ASME A112.19.2, A112.19.6 standards and CSA B45 standards, and other state and local codes.

NOTE: Install this product according to the installation guide.
Fixture dimensions are nominal and conform to tolerances in ASME Standard A112.19.2

See our complete line of acrylic and vitreous china bathroom fixtures, plastic tank trim and plumbing products.

mansfield®

Mansfield Plumbing Products LLC • Customer Service Toll Free 877-850-3060 • Fax 419-938-6234
Website: www.mansfieldplumbing.com • Email: custserv@mansfieldplumbing.com

Form No. M147123 Printed in U.S.A. 7/09
© 2009 Mansfield Plumbing Products LLC