

FISHER

FISHER MANUFACTURING COMPANY TOLL FREE: 800-421-6162 - FAX: 800-832-8238
customer@fisher-mfg.com - www.fisher-mfg.com

PRODUCT NAME:

FAUCET DIPPERWELL

SPEC. FAHB-DP-DPX

Customer/Wholesaler:

Date:

Job Name:

Model Specified:

Quantity:

Contractor:

Architect/Engineer:

MODEL:

☐ 3042 FAUCET DIPPERWELL

OPTIONS OR MODIFICATIONS:

☐ OTHER _____

FEATURES

* STAINLESS STEEL SEAT

SYSTEM LIMITS

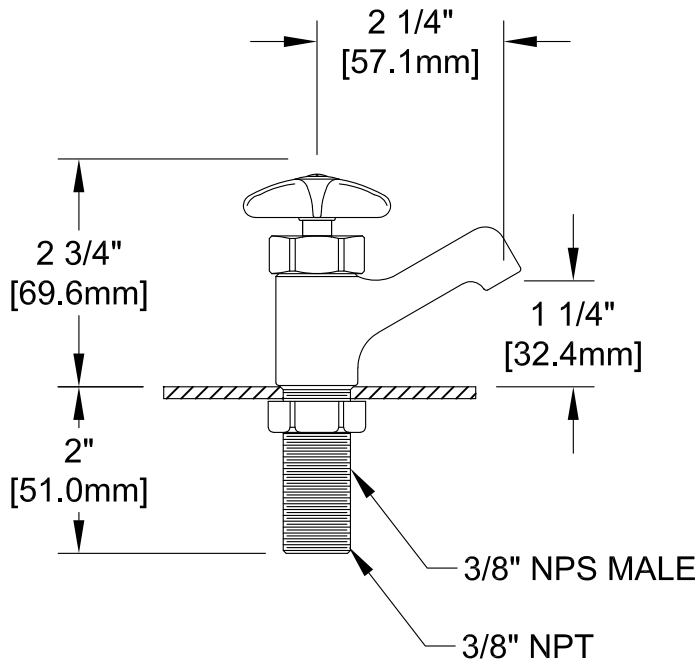
* TEMP: 40°F MIN. TO 160°F MAX.
* PRESSURE: 100 PSI MAX. STATIC
* 2.1 GPM AT 60 PSI (7.9 L/min @410 KPa)

SHIPPING WEIGHT

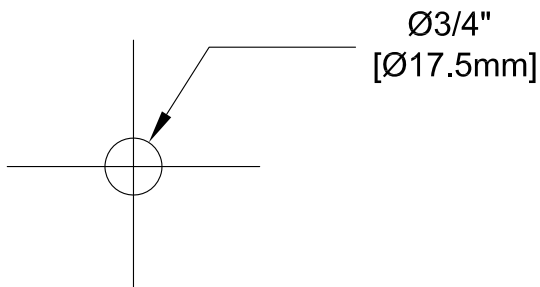
* 1.0 LBS

PRODUCT COMPLIANCE:

* ASME A112.18.1 / CSA B125.1
* NSF 61 - Section 9
* NSF 372 (Low Lead Content)



ROUGH-IN:



Drawn: DF

Checked: DF

Approved: EM

Date: 12/17/20

Sheet: 1 of 2

REPLACEMENT PARTS

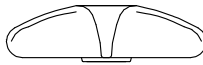


2000-7500
Screw

2000-8000
Button Index
Hot-red
or
2000-8001
Button Index
Cold-blue



3983
HANDLE CROSS KIT



Cross Handle



3071-3303
Bonnet Nut

3042-0000
Stem Kit For
Dipperwell Faucet



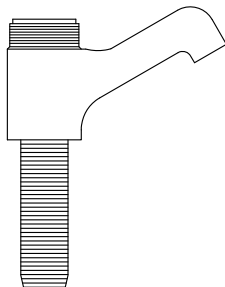
73934
O-Ring



73933
Seat Washer



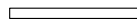
73932
Seat Screw



3042
Dipperwell
Faucet



73493
Chrome
Washer 1-1/4"



73838
Washer 1-3/4"



73862
Lock Nut
3/8"