

MUELLER® 230 SERIES MINI-BAND™ CLAMP

Mueller 230 Series Clamps

The stainless steel 230 Series Mini-Band Clamp features full 360° sealing capability for repairing pinholes, punctures, splits and small abrasions on 1/2"-2" diameter steel or copper pipe. The Mini-Band Clamp is used to stop leaks from pinholes, splits, or circumferential breaks until permanent repairs can be made. It can also be used as a "pinch-mark" on polyethylene

pipe, helping restore the pipe to its full roundness and increasing gas flow. It is available in 3" and 6" lengths. The gasket includes integral stainless steel gap bridges that are recessed and bonded to the gasket. Zinc-plated steel bolts are used on the 230 series clamps; stainless steel bolts are used on the 231 series.

- ❑ **MAXIMUM PRESSURE RATING** – for properly installed clamp: 150 psig (1034 kPa) on steel or copper, 60 psig (413 kPa) on polyethylene.
- ❑ **FULL ENCIRCLEMENT** – gasket wraps 360° for uniform seal on larger leaks.
- ❑ **304L STAINLESS STEEL "GAP BRIDGES"** – molded into gasket where band sections join and add support to provide 360° clamping pressure.
- ❑ **COMPACT, CONVENIENT SIZE** – small size fits in tight spaces, available to repair 1/2" to 2" pipes made of steel, copper or polyethylene. Choice of 3" or 6" lengths.
- ❑ **BANDS** – made of type 304L stainless steel and includes ductile iron lugs.

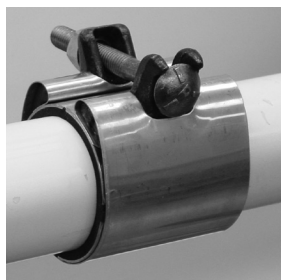


230 SERIES CLAMP



IMPORTANT: MUELLER PIPE REPAIR CLAMPS have demonstrated their capability to seal against gas pressures commonly encountered in distribution systems. Smaller diameter clamps of a given design can seal against higher pressures than larger ones. In addition, the pressure that a clamp can contain is effected by the torque applied to the bolts, the uniformity of the bolt tightening (where there is more than one bolt) as well as the type of extent of pipe damage, surface condition of the pipe, environmental conditions and installation workmanship.

Typical MINI-BAND Clamp



Style number 230

Mueller 230 Series Mini-Band Pipe Repair Clamps - for 1/2" through 2" rigid copper, steel and polyethylene pipe.

To specify the catalog number, use the charts to select the following information for the desired clamp:

1. Style number **230** (change "0" to "1" for stainless steel bolt option)
2. Length: "03" for 3" or "06" for 6"
3. Size number (from chart below)

Example:

The catalog number for a 230 Style clamp, 6" long for 1" steel, with the stainless steel bolt option is 231-06-0132

Nominal pipe size	Clamp size number	Pipe O.D.			
		Standard steel	Copper	Polyethylene (IPS)	Polyethylene (CTS)
1/2"	0063	-	0.625	-	0.625
	0084	0.840	-	0.840	-
3/4"	0088	-	0.875	-	0.875
	0105	1.050	-	1.050	-
1"	0113	-	1.125	-	1.125
	0132	1.315	-	1.315	-
1-1/4"	0138	-	1.375	-	1.375
	0166	1.660	-	1.660	-
1-1/2"	0163	-	1.625	-	1.625
	0190	1.900	-	1.900	-
2"	0213	-	2.125	-	2.125
	0238	2.375	-	2.375	-

Extra bolts for Mueller 200 Series Pipe-Saver and 230 Mini-Band Repair Clamps

Clamp Size	Bolt Size	Part Numbers			
		Corrosion Resistive Plating	Stainless Steel		
			Bolt	Nut	Washer
1/2" - 1"	3/8" x 3"	584534	513363	510364	510372
1-1/4", 1-1/2"	3/8" x 3-1/2"	584535	513364	510365	510373
2" - 5"	7/16" x 4"	584537	513366	510365	510373
6" - 24"	7/16" x 5"	584538	513367	510365	510373



IMPORTANT: MUELLER PIPE REPAIR CLAMPS have demonstrated their capability to seal against gas pressures commonly encountered in distribution systems. Smaller diameter clamps of a given design can seal against higher pressures than larger ones. In addition, the pressure that a clamp can contain is effected by the torque applied to the bolts, the uniformity of the bolt tightening (where there is more than one bolt) as well as the type of extent of pipe damage, surface condition of the pipe, environmental conditions and installation workmanship.