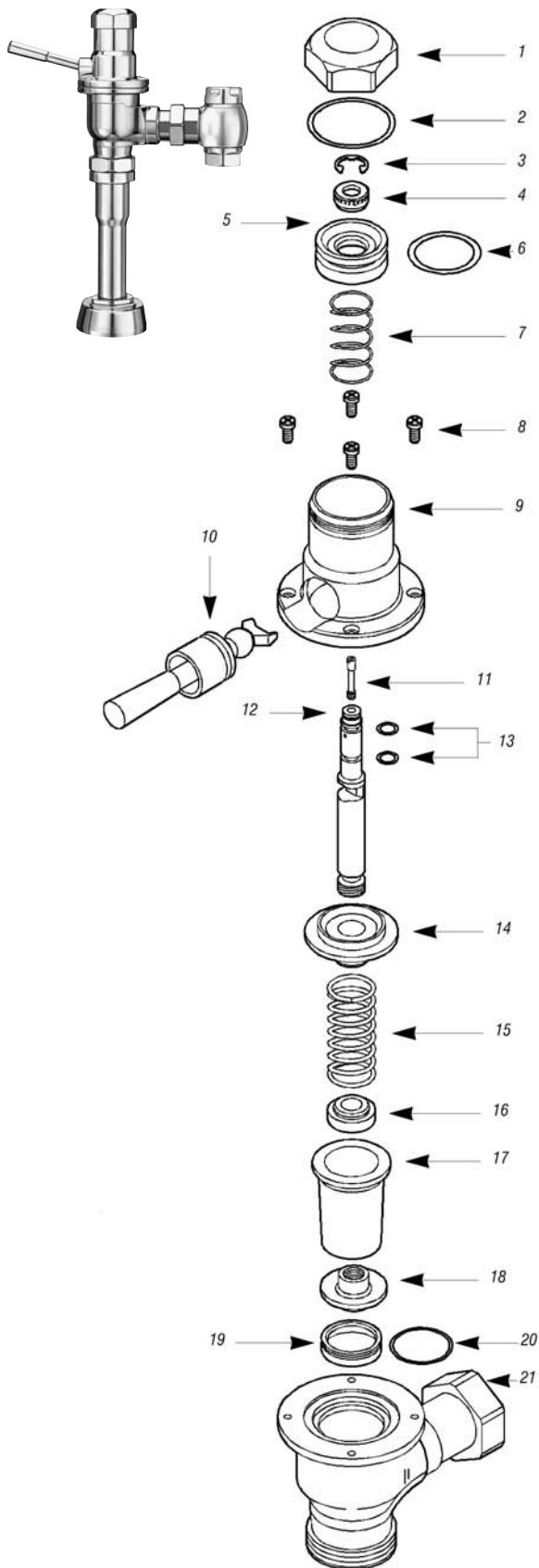


Dolphin® Flushometer



PARTS LIST—DOLPHIN® FLUSHOMETER

Item No.	Code No.	Part No.	Description
1.	0337007	D0-1	Cover Nut CP
2.	5337125	D0-2	O-ring-Seat – 1 required – 6 per package (Cover Gasket)
3.	5337129	D0-28	Retaining Ring – 1 required – 24 per package
4.	5337006	D0-4	Stem Nut RB – 1 required – 6 per package
5.	0337004	D0-5	Piston
6.	5337075	D0-6	O-ring-Piston – 1 required – 6 per package
7.	5337039	D0-7	Piston Spring – 1 required – 6 per package
8.	5337011	D0-11	Cover Screw CP – 4 required – 24 per package
9.	0337003	D0-10	Upper Body CP
10.	0337042	D0-20	Handle and Socket Assembly CP
	0337012	D0-26	Socket
11.	5337126	D0-3	Regulating Screw RB – 1 required – 6 per package
12.	0337087	D0-9	Stem RB
13.	0328336	SH-75	O-ring-Throttle Seal (2 required)
14.	0337005	D0-14	Bushing RB
15.	0337009	D0-16	Compression Spring (Main Spring)
16.	5337034	D0-17	Insert RB – 1 required – 6 per package
17.	0337018	D0-15	"Flex-Sac"
18.	0337084	D0-18	Seating Nut. Part of D0-32 "Flex-Sac" Assembly (See below)
19.	0337016	D0-19	Seat Assembly w/O-ring
20.	0337086	D0-22	O-ring
21A.	0337031	D0-13-NC	Lower Body CP-Closet
21B.	0337032	D0-13-NU	Lower Body CP-Urinal

REPLACEMENT AND REPAIR KITS

A.	0337044	D0-1000-A	Piston with O-ring. Component parts: Items 5 and 6
B.	3337035	D0-1001-A	Repair Kit-Dolphin Handle. Component parts: Items 10, 11, 12, and 13
C.	0337134	D0-32	Flex-Sac Assembly. Component parts: Items 17 and 18
D.	0337136	D0-32-AA	Repair Kit-"Flex-Sac" Assembly. Component parts: Items 2, 6, 13, 17, and 18
E.	0337137	D0-32-AAN	Repair Kit-"Flex-Sac" and Stem. Component parts: Items 2, 6, 7, 13, 15, 17, 18, 19, and 20
F.	0337036	D0-19-A	Seat Assembly with O-ring. Component parts: Items 19 and 20
G.	0337030	D0-12-A	Upper Body Assembly. Component parts: Items 1 through 7 and 9 through 18
H.	0337055	D0-13-A-NC	Lower Body Assembly for Closet. Component parts: Item 21 Lower Body, Coupling (CP), and Ground Joint Tail (CP)

Dolphin® Flushometer

PARTS LIST—DOLPHIN® FLUSHOMETER MODELS AND VARIATIONS

Item No.	Code No.	Part No.	Description
1.	0337023	DO-90-AAGNC	Closet Valve Body and Handle Assembly — Dolphin Type I
	0337025	DO-90-AAGNU	Urinal Valve Body and Handle Assembly — Dolphin Type II
2A.	0388025	H-710-A	Bak-Chek® Control Stop CP with 3/4" NPTF Inlet for Adjustable Tail
	0388022	H-710-A	Bak-Chek® Control Stop CP with 1" NPTF Inlet for Adjustable Tail
2B.	0388048	NH-710-AG	Bak-Chek® Control Stop with 3/4" NPTF Inlet for Ground Joint Tail (Naval Brass; use with Shipboard flushometer Models Type II Class A and B; requires A-35 Reducer Bushing)
	0388058	NH-710-AG	Bak-Chek® Control Stop with 1" NPTF Inlet for Ground Joint Tail (Naval Brass)
	0388044	NH-710-AGS	Bak-Chek® Control Stop with 1" NPSM Inlet for Ground Joint Tail (Naval Brass; use with Shipboard flushometer Models Type I and II when Sil-Braze Adapter is used)
3.	0306196	F-7	1" (25 mm) Supply Flange CP (Supplied When Valve is NOT Ordered with Sweat Solder Kit)
	0306191	F-7	3/4" (19 mm) Supply Flange CP (Supplied When Valve is NOT Ordered with Sweat Solder Kit)
4.	3308782	H-633-AA	1" (25 mm) Sweat Solder Kit with Cast Set Screw Flange CP ("—YBYC" Variation)
	3308788	H-636-AA	3/4" (19 mm) Sweat Solder Kit with Cast Set Screw Flange CP ("—YBYC" Variation)
5A.	0323013	V-500-AA	1-1/2" (38 mm) x 10-1/2" (267 mm) Vacuum Breaker Assembly CP (Model 110/111)
	0323019	V-500-AA	1-1/2" (38 mm) x 23" (534 mm) Vacuum Breaker Assembly CP (Model 115)
5B1.	0396119	F-101	1-1/2" (38 mm) x 10-1/2" (267 mm) Outlet Tube CP Type I Class B
5B2.	0306093	F-2-AT	Coupling CP with S-30 gasket
5C1.†	0314004	NF-1	1-1/2" (38 mm) Scored Outlet CP (Shipboard Model, Type I, Class A)
5C2.‡	2104180	F-2-AT	Coupling CP with S-30 gasket
5D1.	0323010	V-500-A	1-1/2" (38 mm) Vacuum Breaker Assembly CP (Model 120 does not include F-2-A Coupling, see Item 5D2 below)
5D2.	0306092	F-2-A	Coupling CP with S-30 gasket
5E.†	0306850	NF-29-A	Outlet Tube Assembly 3/4" (19 mm) x 6-1/2" (165 mm) Scored Outlet with 1/2" Offset (Shipboard Model, Type II, Class A)
5F.	0306849	NF-29-A	3/4" (19 mm) x 6-1/2" (165 mm) Flush Connection with 1/2" Offset and 3/4" x 1/2" Reducer for 1/2" Spud (Shipboard Model, Type II, Class B)
5G.‡	0323004	V-500-AA	3/4" (19 mm) x 10-1/2" (267 mm) Vacuum Breaker Assembly CP (Model 186)
5H.†	0306780	F-29-A	3/4" (19 mm) x 10-1/2" (267 mm) Flush Connection CP (Model 186—XYW)
6.†	0396302	F-109	1-1/2" (38 mm) Flush Connection CP
7.	SEE SLIP JOINT GASKETS AND RINGS TABLE ON BOTTOM, PAGE 30		
7A.	0306146	F-5-AT	1-1/2" (38 mm) Spud Coupling Assembly (Models 110/111, 115, 120)
7B.	0306125	F-5-AW	3/4" (19 mm) Spud Coupling Assembly (Model 186)
8.	0306982	F-40	1/2" (13 mm) Sil-Braze Adapter

‡ Cut to proper length at installation. Allow a minimum of 5" (127 mm) between tube ends when using rubber hose for shock mounted equipment.

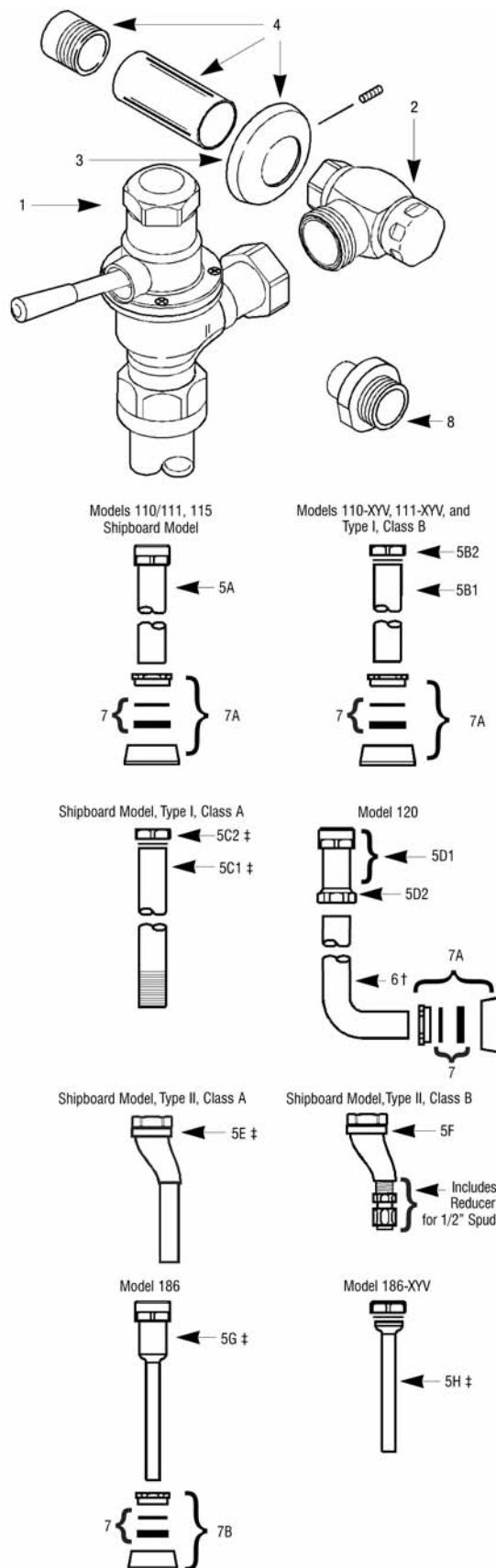
† This Outlet Tube is available in various lengths. Consult factory for assistance.

IMPORTANT NOTES

With the exception of the control stop inlet, DO NOT USE pipe sealant or plumbing grease on any valve component or coupling!

Protect the chrome or special finish of Sloan flushometers — DO NOT USE toothed tools to install or service these valves.

Use a A-50 Super-Wrench™ or smooth jawed spud wrench to secure all couplings.



Dolphin® Flushometer

PARTS LIST—DOLPHIN® FLUSHOMETER MODELS AND VARIATIONS

Size	Code No.	Part No.	Description
ITEM 7. Slip Joint Gaskets and Rings			
1-1/2"	5306058	F-3	Red Friction Ring
	5322001	VBF-5	Black Slip Joint Gasket
	0319086/5319086	S-30	Flexible Seat
	0319079	S-21	Rigid Seat (rubber over brass)
1-1/2" x 1-1/4"	0396062	F-105	Slip Joint Gasket – Rigid
1-1/4"	5306057	F-3	Red Friction Ring
	5322176	VBF-5	Black Slip Joint Gasket
	0307052/5307052	G-21	Rigid Seat (rubber over brass)
1"	5306056	F-3	Red Friction Ring
	5306115	F-5	Black Slip Joint Gasket
3/4"	5306055	F-3	Red Friction Ring
	5306113	F-5	Black Slip Joint Gasket

TROUBLESHOOTING GUIDE

1. Flushometer does not function.

- A. Control stop or main valve is closed. Open control stop or main valve.
- B. Handle socket assembly is damaged. Replace DO-20 handle socket assembly.

2. Volume of water is inadequate to siphon fixture.

- A. Control stop is not open enough. Adjust control stop for desired delivery of water volume.
- B. Timing of flushometer closure is set too fast. Remove DO-1 cover nut. Use a small blade screwdriver to turn DO-3 regulating screw clockwise.
- C. Water supply volume or pressure is inadequate. If no gauges are available to properly measure supply pressure or volume, completely open control stop and hold down flushometer handle without allowing it to close. If fixture siphons, increase timing of closure (see previous solution). If fixture does not siphon, steps must be taken to increase the supply pressure and/or volume. Contact fixture manufacturer for minimum water supply requirements of fixture.

3. Flushometer closes immediately.

- A. Oil chamber of upper body is empty. Remove DO-1 cover nut. Fill oil chamber with SAE 10 Oil.
- B. Piston seal is worn or damaged. Replace DO-6 piston O-ring seal.

4. Length of flush is too short (short flushing).

- A. Volume of oil in oil chamber of upper body is low. Remove DO-1 cover nut. Fill oil chamber with SAE 10 oil.
- B. Timing of flushometer closure is not adequately adjusted. Remove DO-1 cover nut. Using small blade screwdriver, turn DO-3 regulating screw clockwise until a satisfactory flush is achieved.

5. Length of flush is too long (long flushing).

- A. Timing of flushometer closure not adequately adjusted. Remove DO-1 cover nut. Using small blade screwdriver, turn DO-3 regulating screw counterclockwise until a satisfactory flush is achieved.

6. Oil is leaking from handle.

- A. Stem seals are worn or damaged. Replace two (2) SH-75 throttle seal O-rings.

7. Valve does not close completely (water trickle).

- A. Compression spring is worn or damaged. Replace DO-16 compression spring.
- B. Flex-sac assembly is worn. Replace DO-15 flex-sac.

CARE AND CLEANING INSTRUCTIONS

DO NOT use abrasive or chemical cleaners to clean flushometers, they may dull the luster and attack the chrome finish. Use ONLY mild soap and water, and then wipe dry with a clean towel or cloth. When cleaning, protect the exposed flushometer from any splattering of cleaner. Acids and cleaning fluids can discolor or remove chrome plating.

When assistance is required, please contact

Sloan Technical Support at: 1-888-SLOAN-14 (1-888-756-2614).