

### COUNTRY SINK

- Vitreous china
- High splash-back
- Faucet holes on 8" (203mm) centers for wall-mount sink faucet
- 3-1/2" (89mm) outlet for kitchen sink strainer drain

Shown with **7295.152** Heritage faucet with soap dish and lever handles (not included)

- ☐ **9062.008** Faucet holes on 203mm (8") centers

#### Nominal Dimensions:

762 x 559mm  
(30" x 22")

#### Compliance Certifications -

#### Meets or Exceeds the Following Specifications:

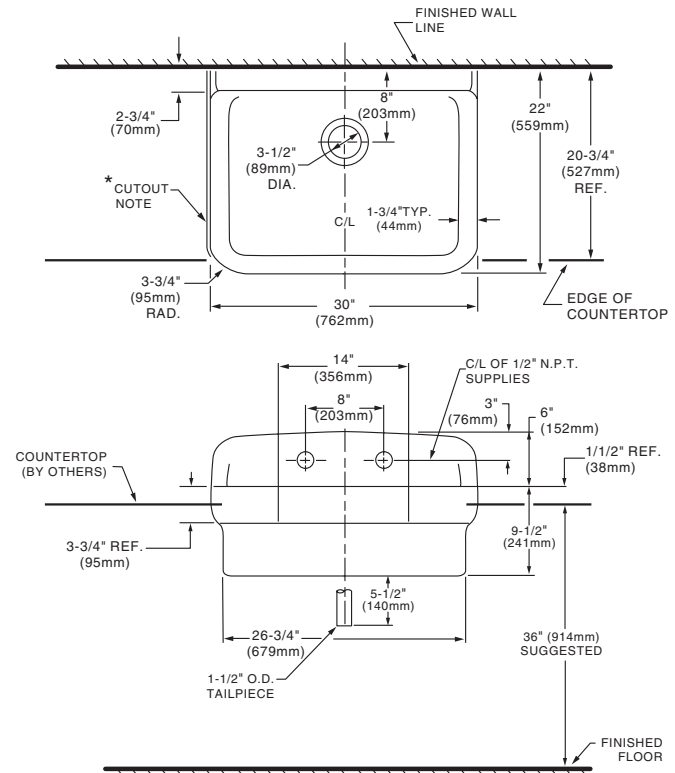
- ASME A112.19.2 for Vitreous China Fixtures



#### To Be Specified:

- ☐ Color:
- ☐ Faucet\*: 7295.152 with swing spout, aerator, soap dish and lever handles
- ☐ Alternative Faucet:
- ☐ Sink Strainer Drain: 4331.013 (1-1/2" tailpiece)

\* See faucet section for available models



#### NOTES:

\* FOR COUNTERTOP CUTOUT AND SINK SUPPORT, SEE INSTALLATION INSTRUCTIONS SUPPLIED WITH SINK.

FITTINGS NOT INCLUDED AND MUST BE ORDERED SEPARATELY.

REQUIRES PLYWOOD BASE SUPPORT AND 2" X 4" FRAMING IN CABINETRY.

**IMPORTANT:** Dimensions of fixtures are nominal and may vary within the range of tolerances established by ASME A112.19.2. These measurements are subject to change or cancellation. No responsibility is assumed for use of superseded or voided leaflet.