

Central Brass

C O M P A N Y

Brecksville, Ohio 44141

Phone: (216) 883-0220 Fax: (440) 526-5745

www.CentralBrass.com

MODEL NOS.

0897 80897 Series

Two-Valve Bath & Shower Fitting

Direct Sweat with built-in transfer valve

8" Centers, Direct Sweat, Compression Stems, Replaceable Seats

0897 Series

Bath & Shower Valve same as 0896 with Shower Head, Arm & Flange

8" Centers, Direct Sweat, Ceramic Stem Assemblies

80897 Series

Bath & Shower Valve with 1/2 IPS Spout, Shower Head, Arm & Flange

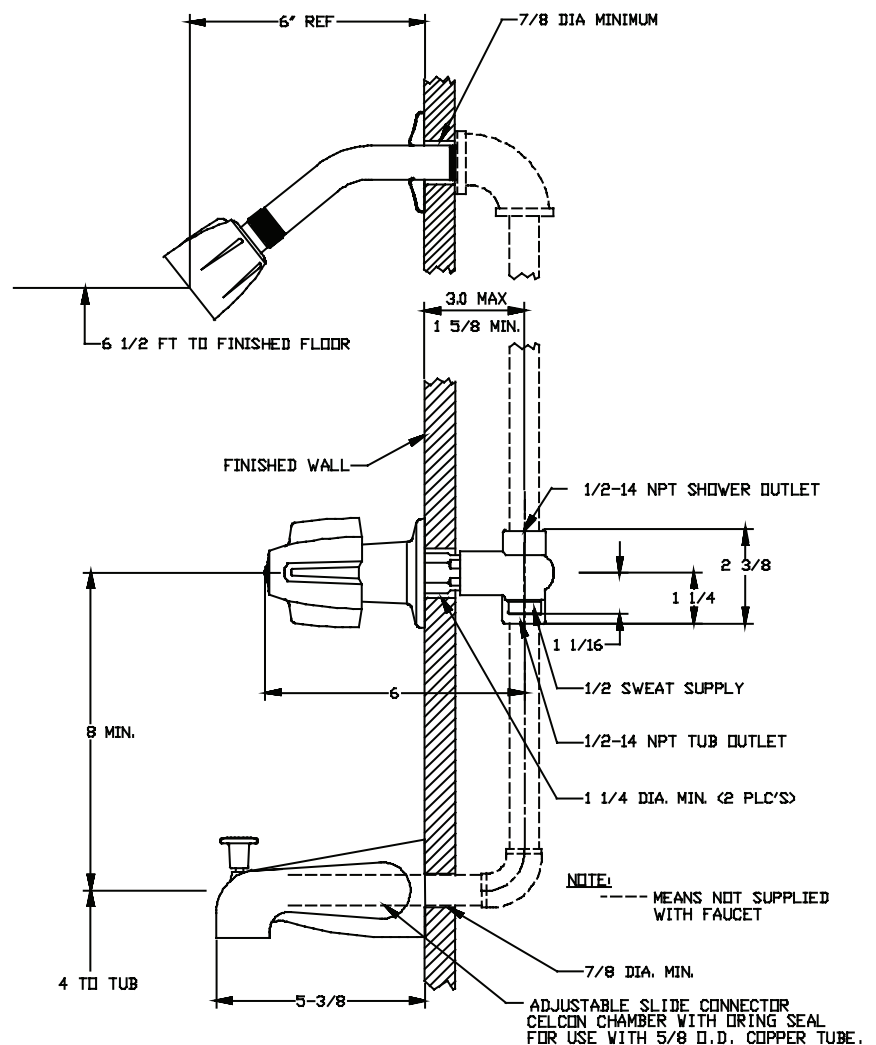
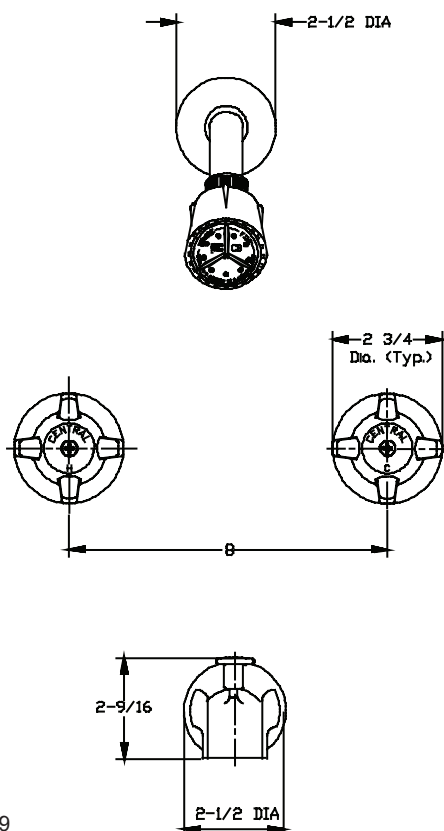
The two-valve bath and shower fitting is made with a cast brass body with replaceable seats (for compression stems only) designed for direct sweat connections. The stem units are all brass, with a reinforced rubber packing and rubber seat washer (for compression stems) or ceramic sealing discs (for ceramic units). The stem units can be easily replaced from the front of the fitting without removing the valve body. The fitting is supplied with an internal transfer valve that prevents shower flow when the spout is open for tub flow. The 1/2-inch diverter spout, handles and escutcheons are zinc die cast with a chrome plated finish. The shower arm is brass with a chrome plated finish, the escutcheon is stainless steel and the shower head is chrome plated plastic.



ASME A112.18.1M

Shower Flow Rate

2.5 gpm @ 80 psi



Central Brass

C O M P A N Y

Brecksville, Ohio 44141

Phone: (216) 883-0220 Fax: (440) 526-5745

www.CentralBrass.com

MODEL NOS.

0897 80897 Series

Two-Valve Bath & Shower Fitting

Direct Sweat with built-in transfer valve

Accessories available

Brass
Stem Extension



G-1548-ET
(Available Separately)
Used for thicker wall dimensions

Central Brass

C O M P A N Y

Brecksville, Ohio 44141

Phone: (216) 883-0220 Fax: (440) 526-5745

www.CentralBrass.com

MODEL NOS.

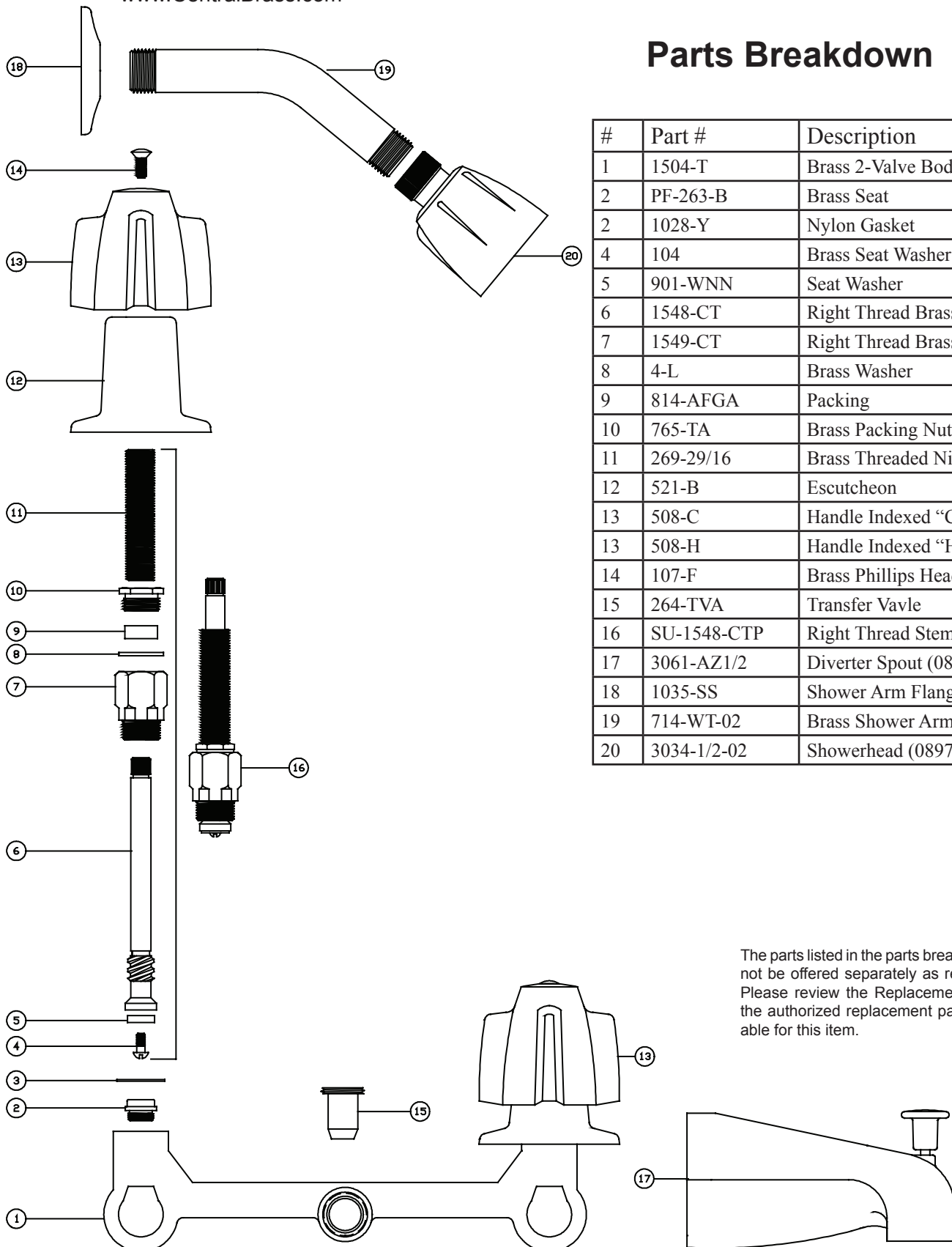
0897 80897 Series

Two-Valve Bath & Shower Fitting

Direct Sweat with built-in transfer valve

Parts Breakdown

#	Part #	Description
1	1504-T	Brass 2-Valve Body
2	PF-263-B	Brass Seat
2	1028-Y	Nylon Gasket
4	104	Brass Seat Washer Screw
5	901-WNN	Seat Washer
6	1548-CT	Right Thread Brass Stem
7	1549-CT	Right Thread Brass Bonnet
8	4-L	Brass Washer
9	814-AFGA	Packing
10	765-TA	Brass Packing Nut
11	269-29/16	Brass Threaded Nipple
12	521-B	Escutcheon
13	508-C	Handle Indexed "C"
13	508-H	Handle Indexed "H"
14	107-F	Brass Phillips Head Screw
15	264-TVA	Transfer Valve
16	SU-1548-CTP	Right Thread Stem Assembly
17	3061-AZ1/2	Diverter Spout (0897 only)
18	1035-SS	Shower Arm Flange (0897 only)
19	714-WT-02	Brass Shower Arm (0897 only)
20	3034-1/2-02	Showerhead (0897 only)



The parts listed in the parts breakdown above may not be offered separately as replacement parts. Please review the Replacement Parts page for the authorized replacement parts that are available for this item.

Central Brass

C O M P A N Y

Brecksville, Ohio 44141

Phone: (216) 883-0220 Fax: (440) 526-5745

www.CentralBrass.com

MODEL NOS.

0897 80897 Series

Two-Valve Bath & Shower Fitting

Direct Sweat with built-in transfer valve

80897

Ceramic Stem Parts

replaces compression stem

SU-1548-CTP

Parts Breakdown

#	Part #	Description
2	1028-Y	Nylon Gasket
3	184-A	Celcon Retainer
4	183-A	Rubber Seal
5	182	Ceramic Disc - Lower
6	181	Ceramic Disc - Upper
7	351-S	Brass Stem
8	180	Celcon Washer
9	1038-E14	O-Ring
10	351-B	Brass Bonnet
11	351-W	Brass Stop Washer
12	351-C	Brass Cap
13	269-29/16	Brass Threaded Nipple
16	SU-351-L	Left Thread Ceramic Disc Cartridge

The parts listed in the parts breakdown above may not be offered separately as replacement parts. Please review the Replacement Parts page for the authorized replacement parts that are available for this item.

