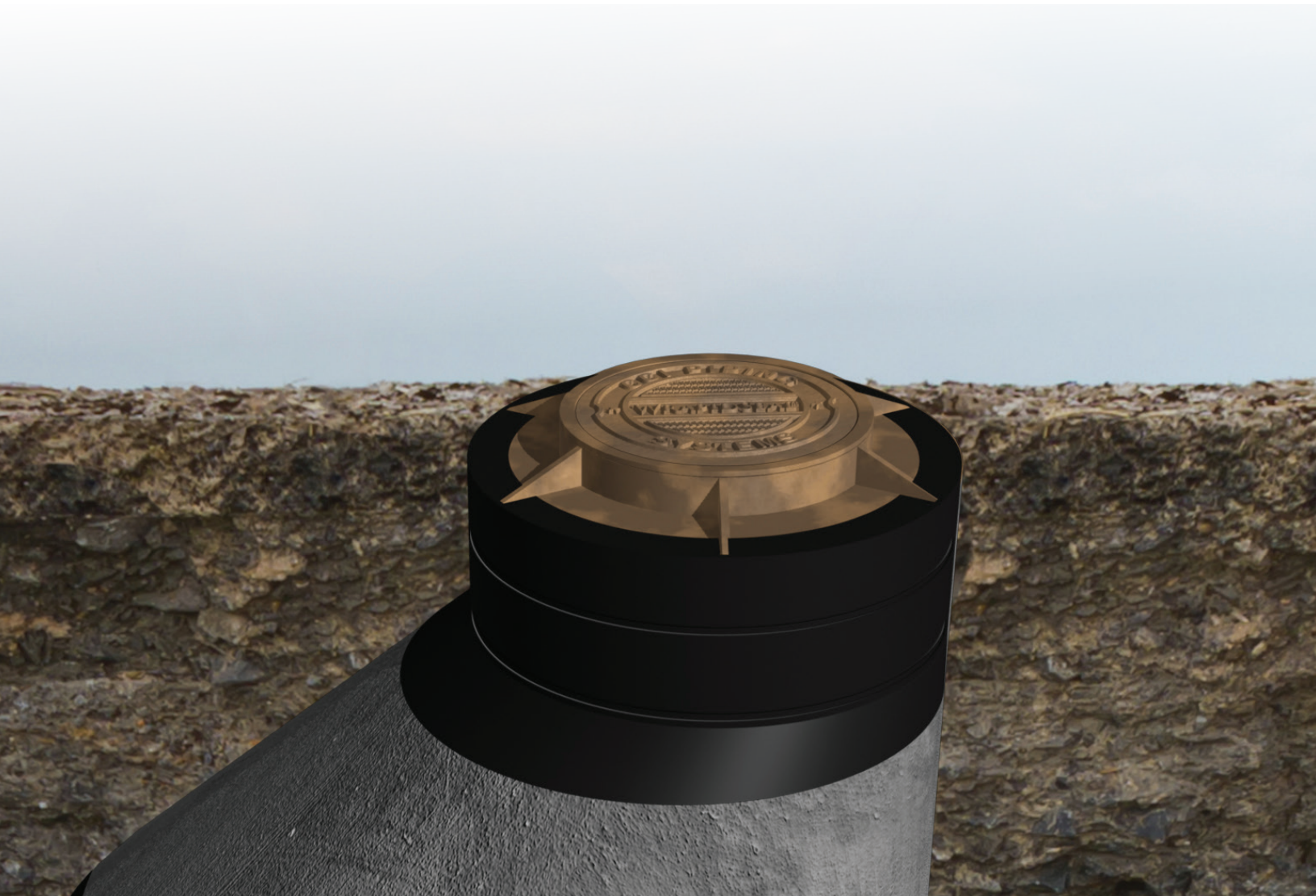


WRAPIDSEALTM

MANHOLE ENCAPSULATION SYSTEM



CCI PIPING SYSTEMS
PIPE PROTECTION PRODUCTS

ccipipe.com • 800.867.2772



WRAPIDSEAL™

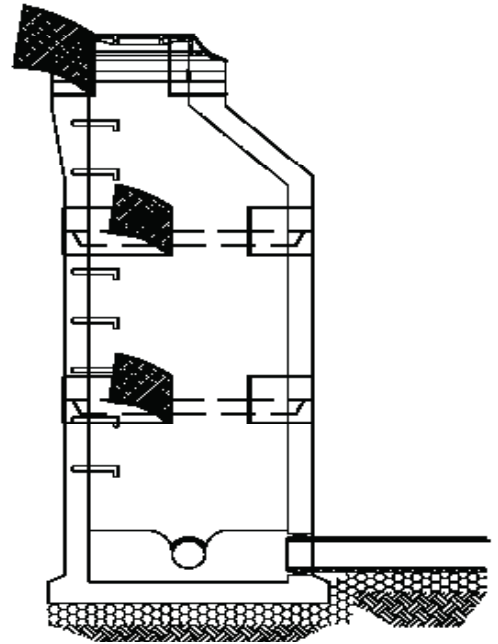
MANHOLE ENCAPSULATION SYSTEM

WrapidSeal™ Manhole Encapsulation System consists of an engineered primer and a unique wrap-around heat shrinkable sleeve designed specifically to seal joints and prevent ground-water from entering a collection system.

WrapidSeal™ can be utilized on both new construction and for rehabilitation of existing manholes. Most rehabilitation applications using WrapidSeal™ typically involve only the top portion of the structure, since cost considerations do not normally permit excavating an entire manhole.

An engineering study involving manhole rehabilitation states that, “partial replacement also is effective where rehabilitation is limited to within the manhole’s top 12 to 24 inches.”¹

This top portion of the manhole is where WrapidSeal™ performs particularly well due to its unique ability to conform, seal, accommodate movement, and provide structural integrity.



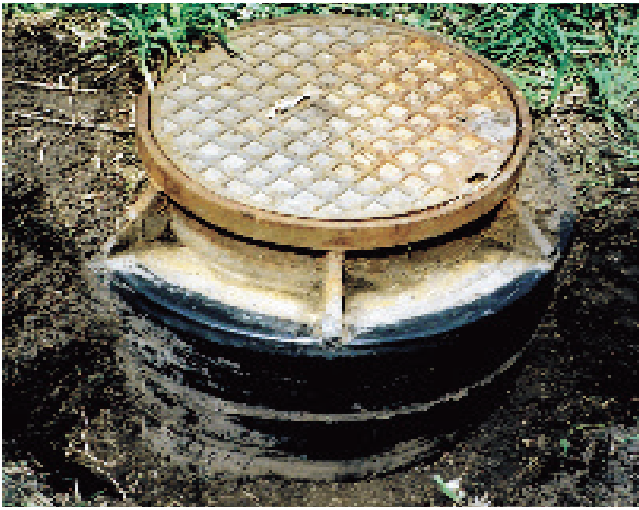
High shrink membrane conforms to irregular structures.

HEAT SHRINKABLE SLEEVE SYSTEM FOR MANHOLE CHIMNEY & BARREL JOINTS

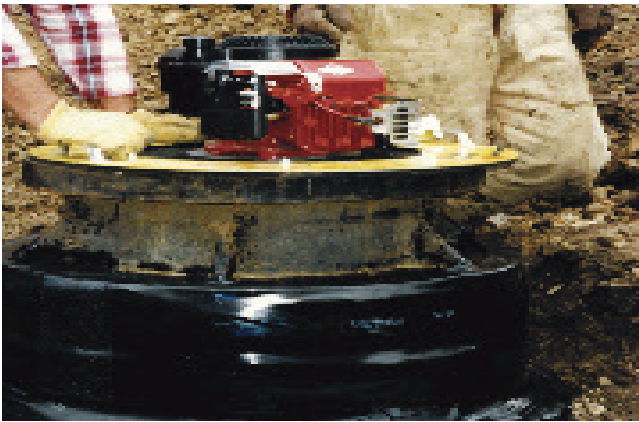
- Seals joints which reduces groundwater inflow & infiltration
- Compatible with concrete, fiberglass, plastic and steel structures
- Installs in any climate
- Installs with municipal or contract labor
- Limited field training required
- Minimal surface preparation required

FUNCTIONAL PERFORMANCE OF WRAPIDSEAL™

Property	ASTM Method	Requirement	Units
Peel Strength	D1000	8.6	pli
Lap Shear	D1002	1.5	psi
Impact Resistance	DIN 30672 (class C)	18%	Nm
Water Absorption	D570	0.02 max	%
Low Temp. Flex.	D2671	-20	°F



Excellent soil stress resistance after 7 freeze-thaw cycles.



WrapidSeal™ positive external seal; vacuum tests to 11" Hg.



WrapidSeal™ adhesive strength demonstrated with vertical lift.

FEATURES & BENEFITS

Quick installation

Minimal downtime, cost-effective

Heat activated material

Torch-applied, shrinks material to conform to structure

High shrink membrane

70% stretch/40% recovery, shrinks to fit manhole profile

High tensile strength and elongation

Accommodates structural movement

Excellent abrasion resistance

Tough backing resists soil stress

Supplied in bulk rolls

Field-cut to fit any size manhole

Complete joint coverage

Reduces groundwater infiltration

Positive external seal

For new construction or rehabilitation

Provides corrosion protection

Extends manhole service life

Long-term protection

Soil stresses, acidity, and freeze-thaw cycles



Impact force depicts shear resistance of WrapidSeal™

SLEEVE BACKING

Property	ASTM Method	Requirement	Units
Tensile Strength	D882	3,000	psi
Elongation	D882	669	%
Hardness	D2240	46	Shore D
Abrasion Resistance	D1044	35	mg

IT'S NOT THE CONTRACTOR'S FAULT. IT'S NOT THE ENGINEER'S FAULT. IT'S THE ASPHALT.

THE PROBLEM



Manholes will deteriorate as a result of soil stresses, groundwater, exposure to sewer gas, structural movement from traffic loading, and soil movement from wet/dry or freeze-thaw cycling. Over time, the deterioration will cause infiltration of groundwater and soil into wastewater or stormwater systems. In paved areas, such as streets, manhole deterioration can generate sinkholes and cause pavement to fail. This results in restraints on treatment plant capacities and increased costs for processing groundwater, paving repairs, traffic disruption, and ongoing damage to manhole and surrounding structures.

THE SOLUTION



WrapidSeal™ is an external manhole encapsulation system that effectively seals the joints of a manhole and extends the service life of the structure. This system is made from a unique heat shrinkable thermoplastic material that conforms to the shape of the manhole and forms a tight monolithic seal on the joints. WrapidSeal™ can be used for new construction or for the rehabilitation of existing manholes to control infiltration through joints and prevent deterioration; thus eliminating costly maintenance repairs and the added expense of treating groundwater.

PROTECTING YOUR INFRASTRUCTURE SINCE 1995



CCI PIPING SYSTEMS, LLC

1026 O'Neal Drive • Breaux Bridge, LA 70517
ccipipe.com • sales@ccipipe.com
337.332.5808 • 800.867.2772