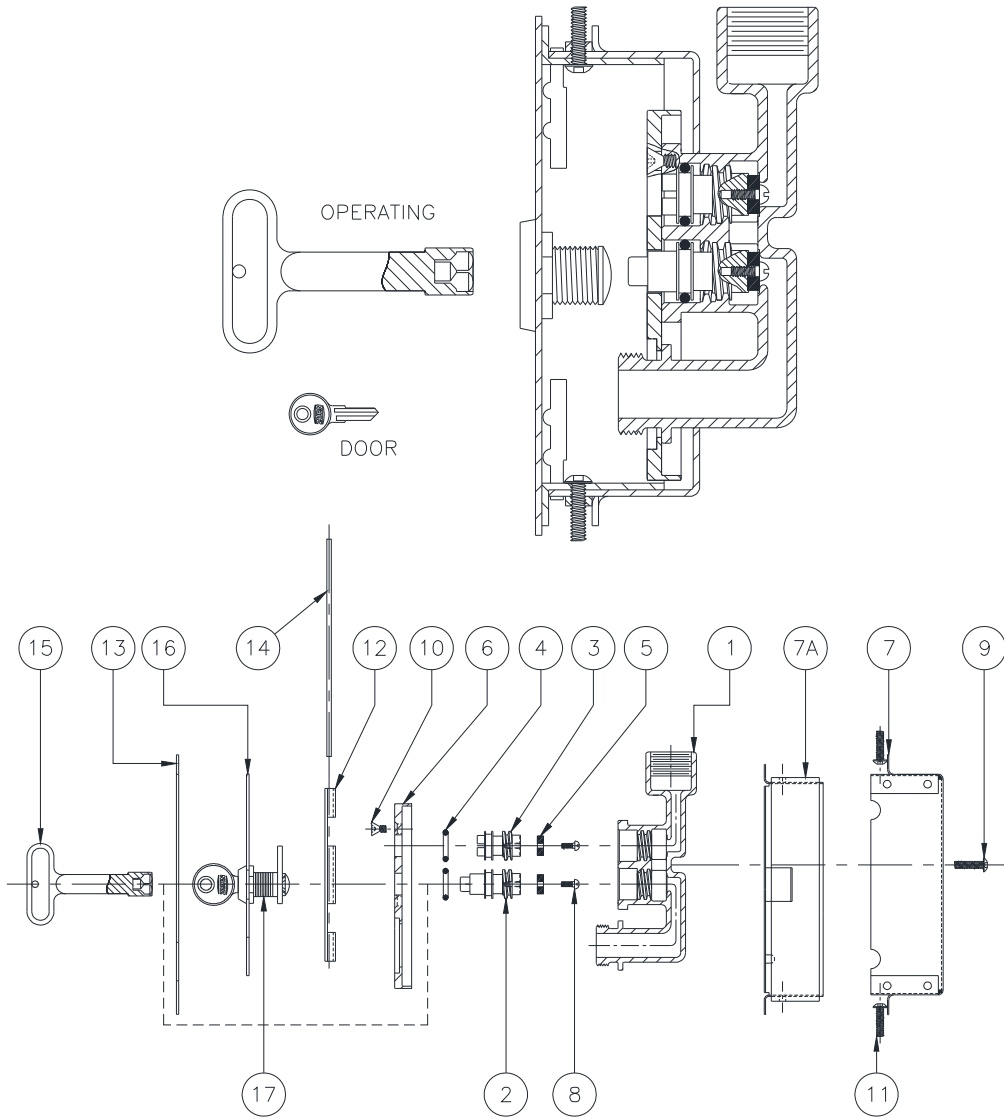




# Z1350 WALL HYDRANT ASSEMBLY

Dimensional data (inches and [mm]) are subject to manufacturing tolerances and change without notice.



LIST OF MATERIAL			
IT.	QTY	PART NO.	DESCRIPTION
1	1	56488-001	HEAD
* 2	1	56512-001	OPERATING PLUNGER
* 3	1	56512-002	STOP PLUNGER
* 4	2	23750-313	O-RING
* 5	2	56513-001	TEFLON WASHER
6	1	56479-001	FACEPLATE
7	1	56983-001	BODY BOTTOM
7A	1	56731-001	SLEEVE
* 8	2	14853-016	SCREW #6-32 N.C.

LIST OF MATERIAL			
IT.	QTY	PART NO.	DESCRIPTION
9	2	14853-041	SCREW #10-24 N.C.
10	4	22698-047	FACEPLATE SCREW
11	2	56988-002	SCREW #10-24 N.C.
12	1	58482-001	HINGE BRACKET
13	1	56185-001	FRAME
14	1	58483-001	HINGE PIN
* 15	1	59546-001	KEY
16	1	56187-006	COVER
17	1	47153-001	CYLINDER LOCK ASSEMBLY W/ KEY

\* ITEMS ARE AVAILABLE IN -RK REPAIR KIT OPTION BAG #66955-208-9.

\* Regularly furnished unless otherwise specified.