

**TITAN**

## WYE STRAINER • FLANGED ENDS

### CLASS 150 • CARBON AND STAINLESS STEEL



2 1/2" YS 61-SS

Models: **YS 61-CS**  
(Carbon Steel)

**YS 61-SS**  
(Stainless Steel)

**Size Range: 1/2" thru 24"**

#### WORKING PRESSURES & TEMPERATURE - NON-SHOCK

ANSI 150 lb Class	YS 61-CS	YS 61-SS
WOG (Water, Oil, Gas)	285 PSI @ 100 °F	275 PSI @ 100 °F
Saturated Steam	150 PSI @ 366 °F	150 PSI @ 366 °F
MAX Liquid	80 PSI @ 800 °F	20 PSI @ 1000 °F

### Features:

- SELF CLEANING TYPE
- BOLTED COVER FLANGE ALLOWS EASY REMOVAL OF SCREEN FOR CLEANING  
ALSO HELPS TO ENSURE PROPER ALIGNMENT OF SCREEN DURING REASSEMBLY
- PRECISION MACHINED SEAT ENSURES PROPER SEATING OF SCREEN
- TAPPED NPT BLOW-OFF
- DRAIN CONNECTION FURNISHED WITH PLUG AS STANDARD
- STRAINER HAS LARGE OPEN AREA  
MINIMUM 2.5 TIMES LARGER THAN CORRESPONDING PIPE SIZE
- EPOXY PAINT IS STANDARD ON CARBON STEEL UNITS
- INLET AND OUTLET BOSSES ARE PROVIDED FOR GAUGE TAPPING
- OPTIONAL COVER DESIGNS (I.E. HINGE TYPE)
- BODY MEETS APPLICABLE ASTM STANDARDS
- HIGH TEMPERATURE COVER GASKETS ARE SET IN MACHINED COUNTER BORES
- RAISED FACE WITH BOLT HOLES EITHER SPOT FACED OR BACK FACED

*Ideal Design for Commercial and Industrial Applications  
with Higher Pressure and Temperature Requirements*



**TITAN FLOW CONTROL**

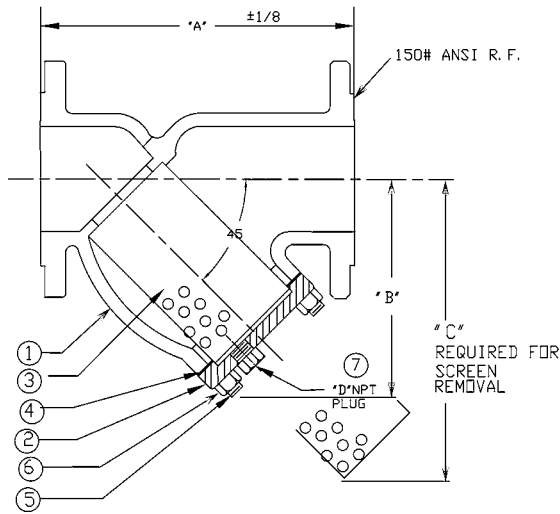
290 Corporate Drive  
Lumberton, NC 28358  
Tel: 910-735-0000 Fax: 910-735-3848  
titan@titanfci.com www.titanfci.com

**WYE STRAINER**

MODEL: YS 61-CS  
FLANGED ENDS  
CARBON STEEL

MODEL: YS 61-SS  
FLANGED ENDS  
STAINLESS STEEL

**ANSI  
Class  
150 lb**



**BILL OF MATERIALS**

No.	PART	YS 61-CS	YS 61-SS
1	Body	ASTM A216 Gr. WCB	ASTM A351 Gr. CF8M
2	Cover	ASTM A216 Gr. WCB	ASTM A351 Gr. CF8M
3	Screen	Type 304 Stainless Steel	
4	Gasket	Type 304 Stainless Steel Spiral Wound Non-Asbestos	
5	Studs	ASTM A193 Gr. B7	ASTM A193 Gr. B8 AISI 304
6	Nuts	ASTM A194 Gr. 2H	ASTM A194 Gr. 8 AISI 304
7	Plug	ASTM A105	ASTM A182 Gr. F316

\*Recommended spare parts

**Notes:**

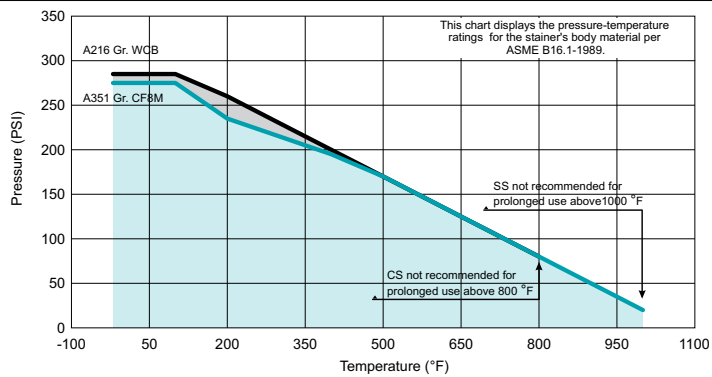
- A wide range of optional gasket materials available - C/F.
- Optional body materials available:  
(LCB, WC6, WC9, 316L, Alloy 20, and Monel).
- Flange Finish: 125-250 AARH
- Larger sizes available (14" and above) - C/F.

**DIMENSIONS:**

SIZE	in	1/2	3/4	1	1 1/4	1 1/2	2	2 1/2	3	3 1/2	4	5	6	8	10	12
	mm	15	20	25	32	40	50	65	80	90	100	125	150	200	250	300
A DIMENSION FACE TO FACE	in	6.50	7.37	7.37	7.00	7.12	7.87	9.75	10.06	12.12	12.12	15.62	18.50	21.37	26.00	29.87
	mm	166	188	188	178	181	200	248	256	308	308	397	470	543	661	759
B DIMENSION CTR LINE - BOTTOM	in	3.50	3.75	3.75	4.75	4.75	5.25	6.50	7.00	8.25	8.25	11.25	13.50	15.50	18.50	22.25
	mm	89	96	96	121	121	134	166	178	210	210	286	343	394	470	566
C DIMENSION SCREEN REMOVAL	in	5.00	5.00	5.00	7.00	7.00	7.00	9.75	10.00	12.00	12.00	20.00	20.00	22.75	28.00	30.00
	mm	127	127	127	178	178	178	248	254	305	305	508	508	578	712	762
D DIMENSION NPT BLOW-OFF	in	3/8	1/2	1/2	1/2	1/2	1/2	1	1	1 1/2	1 1/2	2	2	2	2	2
	mm	10	15	15	15	15	15	25	25	40	40	50	50	50	50	50
ASSEMBLED WEIGHT	lb	5.5	10.3	10.3	9.8	12.5	18.0	28.0	34.0	55.0	55.0	90.0	138.0	220.0	302.0	550.0
	kg	2.5	4.6	4.6	4.4	5.7	8.2	12.7	15.4	24.9	24.9	40.8	62.5	99.7	136.8	249.2
Flow Coefficient	C <sub>v</sub>	C/F	C/F	C/F	C/F	42	69	120	160	210	260	390	550	940	1700	2300

Dimensions and weights are for reference only. When required, request certified drawings.

**PRESSURE-TEMP: A216 Gr. WCB & A351 Gr. CF8M Class 150 LB**



**TESTING:**

Strainers are individually, hydrostatically tested at 1.5 x the 100 °F rating, rounded off to the next higher 25 PSI measurement .

**WORKING PRESSURES & TEMPERATURE - NON-SHOCK**

ANSI 150 lb Class	YS 61-CS	YS 61-SS
WOG (Water, Oil, Gas)	285 PSI @ 100 °F	275 PSI @ 100 °F
Saturated Steam	150 PSI @ 366 °F	150 PSI @ 366 °F
Max Liquid	80 PSI @ 800 °F	20 PSI @ 1000 °F

**STANDARD SCREEN SELECTIONS**

Sizes	Water Service	Open Area	Steam	Open Area
1/2" - 4"	0.062 (1/16)	37%	0.033 (1/32)	28%
5" - 12"	0.125 (1/8)	40%	0.045 (3/64)	36%

A wide range of optional wire mesh and perforated screens are available.

**REFERENCED STANDARDS**

Design, Shell Wall Thickness, and Pressure-Temperature Rating	ANSI B16.50
---	-------------

Ordering Code:

Size:

Customer/Project:

Inq./P.O. No.:

Titan Order No.:

Certified By:

Date:

**Engineering Specification Submittal**

Titan FCI makes every effort to ensure the information presented on our literature accurately reflects exact product specifications. However, as changes occur, there may short-term differences between actual product specifications and the data on our literature. Titan FCI reserves the right to make specification changes to improve our products without prior notification.

**WYE STRAINER • YS 61-CS • YS 61-SS**

Size	Model Number	Description	Drawing No.