

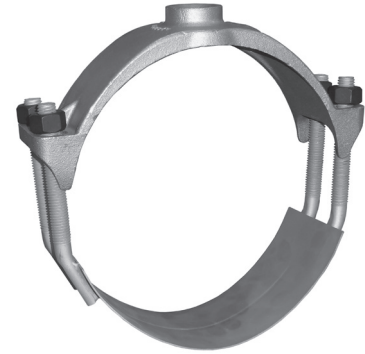
Rev. 8-19 Shaded area indicates change

Mueller® Service Saddles for use on A-C, cast iron, ductile iron, and AWWA C900 PVC plastic pipe

- Outlet tapped with either AWWA taper (C.C.) or AWWA I.P. thread (F.I.P.T.)
- For use on A-C pipe, cast iron or ductile iron pipe and cast iron O.D. PVC pipe
- 200 psig (1380 kPa/14 barg) maximum working pressure
- Available in double strap designs
- Brass body
- 304L stainless steel straps
- Rolled strap threads
- O-ring sealed outlet
- 3/4" thru 2" tap sizes (1/2" and 5/8" some styles)
- Meets all applicable parts of ANSI/AWWA C800
- NSF 61 Certified



BR 2 S Series



BR 2 W Series

Mueller Service Saddles with Stainless Steel Double Straps

Pipe O.D. Range*		Kind and Size of Pipe			Stainless Steel Double Straps							
Inch	mm	A-C	Cast or Ductile Iron, C900 PVC	Tap*** Thread	Base Catalog Number	Size of Tapping (add to "Base" to complete catalog number)						
						1/2"	5/8"	3/4"	1"	1-1/4"	1-1/2"	2"
4.74-5.32	120.4-135.1	**	4"	CC or IP	BR2S0474	050	062	075	100	-	-	-
4.74-5.10	120.4-129.5		4"	CC or IP	BR2S0474	-	-	-	-	125	150	200
5.10-5.40	129.5-137.1		4"	CC or IP	BR2S0510	-	-	-	-	125	150	200
6.84-7.45	173.7-189.2		6"	CC or IP	BR2S0684	050	062	075	100	125	150	200
8.99-9.67	228.4-245.6		8"	CC or IP	BR2S0899	050	062	075	100	125	150	200
11.04-12.12	280.4-307.8		10"	CC or IP	BR2S1104	050	062	075	100	125	150	200
13.14-14.58	333.8-370.3		12"	CC or IP	BR2S1314	050	062	075	100	125	150	200
15.22-16.88	386.6-428.7		14"	CC or IP	BR2S1522	-	-	075	100	-	150	200
17.32-19.19	439.9-487.4		16"	CC or IP	BR2S1732	-	-	075	100	-	150	200
18.00-19.50	457.2-495.3		18" X	CC or IP	BR2W1800	-	-	075	100	125	150	200
20.00-21.60	508.0-548.6		20" X	CC or IP	BR2W2000	-	-	075	100	125	150	200
24.00-25.80	609.6-655.3		24" X	CC or IP	BR2W2400	-	-	075	100	125	150	200

*A-C pipe, classes 150-200 per ASTM C295 and AWWA C400 – actual O.D. of pipe being used must fall within the pipe O.D. range listed in the preceding charts. Centrifugally cast pipe, classes 50-250 per ANSI/AWWA C102/A21.2; ANSI/AWWA C106/A21.6; ANSI/AWWA C108/A21.8, and Federal specification WW-P-421. Ductile iron pipe, classes 50-56 per ANSI/AWWA C151/A21.51; Cast iron O.D. PVC plastic pipe per AWWA C900.

** The outside diameter of A-C pipe varies from manufacturer to manufacturer, to make certain you select the proper clamp: 1) Determine the O.D. of the pipe at the point of saddle installation; 2) From the pipe O.D. range column of the above chart, choose a saddle that has a pipe O.D. range that includes the determined pipe diameter.

***CC=AWWA Taper; IP=AWWA IP thread (F.I.P.T.)

X – 18", 20" and 24" Saddles are provided with the "W" Double Wide Strap

These machines may be used with the service saddles illustrated on this page

Machine	Service Saddle Tap Size						
	1/2"	5/8"	3/4"	1"	1-1/4"	1-1/2"	2"
E-5™	X	X	X	X	X	X	X
D-5™	-	-	X	X	X	X	X
TRU-CUT™	-	-	X	X	-	-	-
MEGA-CUT™	X	X	X	X	X	X	X
PL-2™	-	-	X	X	-	-	-

TO ORDER SPECIFY QUANTITY, OUTLET TAPPING SIZE AND CATALOG NUMBER

⚠ WARNING: Use on A-C pipe, which contains a known carcinogen, requires appropriate protective equipment and procedures be employed.