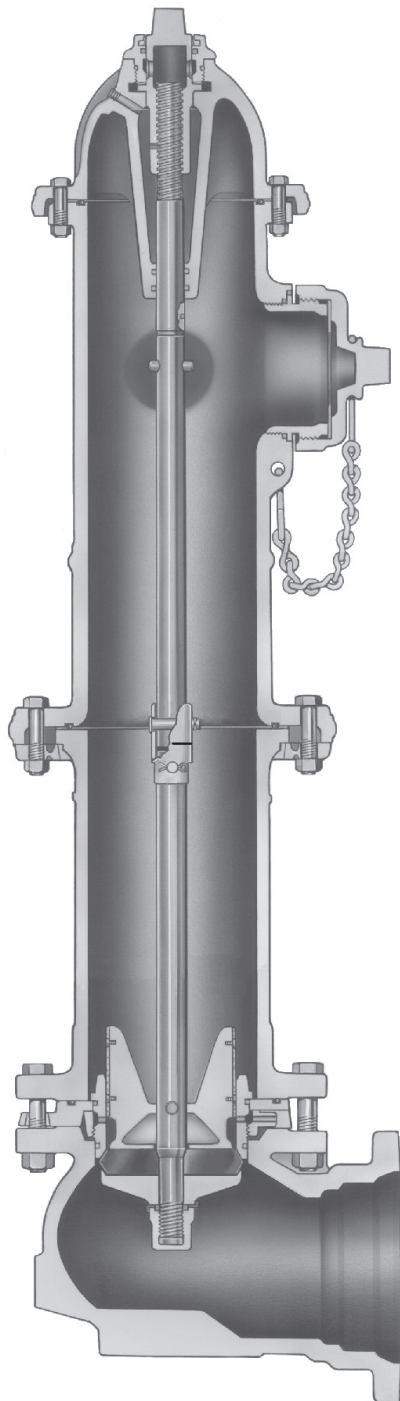


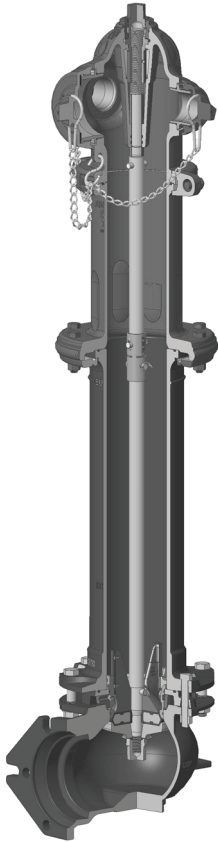
**MUELLER SUPER CENTURION  
Fire Hydrant Features**



- **PRESSURE RATED** - standard max. working pressure 350 psig (2400 kPa, 24 barg); Test pressures 700 psig (4800 kPa, 48 barg).
- **HOLD-DOWN NUT** - with integral weather seal. Design discourages unauthorized removal of the hold-down nut or bronze operating nut. Resilient wiper seal between hold-down nut and operating nut prevents water entry to protect operating nut from freezing. Wiper seal material is resistant to ultra-violet ray deterioration. O-ring seal provides second level of protection.
- **ANTI-FRICTION WASHER** - Acetal washer – helps assure easy operation for life of the hydrant.
- **OIL FILLER PLUG** - permits quick check of oil level. Lets you add oil without removing bonnet.
- **OIL RESERVOIR O-RING SEALS** - seal oil in, water out.
- **STEM** - coated for corrosion resistance
- **STAINLES STEEL STEM COUPLING** - pulls free if hydrant is hit by a vehicle preventing damage to the stem and main valve. Coupling will not break into pieces that could drop into lower barrel and affect valve operation. Top of lower stem is below the top of the lower barrel so that a tire cannot depress the stem and open the main valve. Reusable clip is easy to use. Repair is easy and economical.
- **TRAFFIC FLANGE** - breaks cleanly to help prevent barrel damage, yet is strong enough to withstand normal handling. Allows economical repair, adding of extension section, rotation or changing of upper barrel without digging or water shut-off.
- **BRONZE UPPER VALVE PLATE** - conical design for smooth flow.
- **DRAIN VALVE FACINGS** - specially designed, long-life facings provide effective sealing.
- **CAST IRON CAP NUT** -retains main valve. Seats against cap nut gasket to prevent corrosion of stem threads. Locked in place by a stainless steel lock washer. Mueller HP Epoxy coated for durability.
- **SHOE DESIGNED FOR MAXIMUM FLOW AND EASY CONNECTION** - with its smooth transitional contours, extended neck and integral anti-rotation pads, allowing use of standard tee-head bolts. The inside of the shoe is covered with MUELLER HP® Epoxy Coating. This thermosetting epoxy forms a tough corrosion-resistant barrier to chemicals, physical impact and electrical currents.
- **MEETS OR EXCEEDS** all applicable requirements of ANSI/AWWA C502 Standard and UL 246 and FM 1510 specifications. Certified to ANSI/NSF 61/372.
- **O-RING SEALS AT BONNET, GROUND, AND SHOE FLANGES** - for better leak resistance, easier maintenance.
- **SEALED OIL RESERVOIR** - O-ring sealed to prevent leakage. Provides positive lubrication of stem threads and bearing surfaces each time the hydrant is operated. Filled at the factory.
- **FULL FLOW OPENINGS** - large radius hose and pumper openings produce low friction loss.
- **FIELD REPLACEABLE HOSE AND PUMPER NOZZLES** - O-ring sealed. Threaded in place and retained by stainless steel locks. Nozzles are easily replaced.
- **ELECTRO-GALVANIZED BOLTS AND NUTS** - provide corrosion protection.
- **NON-KINKING CHAINS** - heavy-duty chains are securely attached to the hydrant. Special chain loop permits free turning of the cap.
- **BURY DEPTH TAG** - Attached to the chain, provides instant bury information.
- **BRONZE SEAT RING** - threaded into drain ring and O-ring sealed. Seat ring is easily removed or installed from above ground. Each time main valve is opened or closed, double drain valves force-flush both drain valve openings to keep them open for effective barrel drainage. Bronze drain valves are integral parts of main valve assembly.
- **PATENTED REVERSIBLE, ENCAPSULATED, COMPRESSION-TYPE MAIN VALVE** - closes with pressure for positive seal. Rubber material has long service life, yet is reversible providing a convenient spare in place.

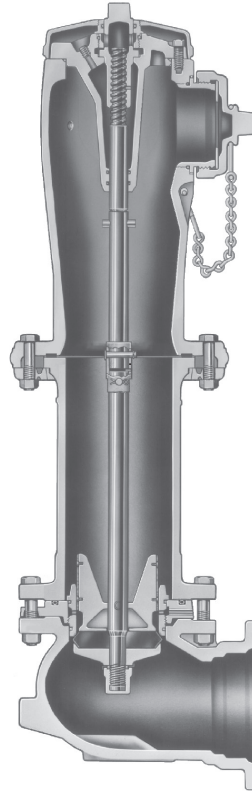
Rev. 8-19 Shaded area indicates changes

## A-403 Centurion Hydrant 2-Way and 1-Way Fire Hydrant



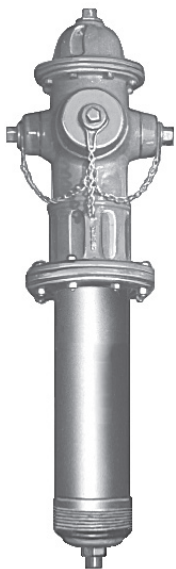
- Meets all applicable parts of ANSI/AWWA C502 Standard
- Hold-down nut with integral weather seal; designed to discourage unauthorized tampering
- Dry top design with O-ring sealed oil reservoir
- Stainless steel stem coupling pulls free if hydrant is hit by a vehicle preventing damage to the stem and main valve
- Reversible, compression-type main valve closes with pressure for positive seal
- Low flow loss design with full flow nozzles and shoe
- Field replaceable nozzles
- Dual bronze drain ways
- 350 psig (2400 kPa, 24 barg) maximum working pressure; 700 psig (4800 kPa, 48 barg) test pressure

## Mueller Modern Centurion™ Fire Hydrant



- Modern, sleek exterior design
- Meets all applicable parts of ANSI/AWWA C502 Standard
- Post type dry barrel design
- Dry top design with O-ring sealed oil reservoir
- Traffic feature
- Stainless steel stem coupling pulls free if hydrant is hit by a vehicle preventing damage to the stem and main valve
- Reversible, compression-type main valve closes with pressure for positive seal
- Low flow loss design with full flow nozzles and shoe
- Field replaceable nozzles
- Dual bronze drain ways
- Two way and three way designs
- 200 psig (1400 kPa/14 barg); 400 psig (2800 kPa/28 barg) test pressure.

## Mueller Centurion Spin-in Fire Hydrant



- Lower barrel threaded to fit most sizes of R.D.Wood fire hydrant shoes
- Meets all applicable parts of ANSI/AWWA C502 Standard
- Post type dry barrel design
- Dry top design with O-ring sealed oil reservoir
- Traffic feature
- Reversible, compression-type main valve closes with pressure for positive seal
- Low flow loss design with full flow nozzles and shoe
- Field replaceable nozzles
- Dual bronze drain ways
- Two way and three way design
- 200 psig (1400 kPa/14 barg) maximum working pressure, 400 psig (2800 kPa/28 barg) test pressure

## Mueller Centurion Standard Post & Flush Fire Hydrant



- 2-1/8" main valve opening
- Meets all applicable parts of ANSI/AWWA C502 Standard
- Dry barrel design
- Used for blow offs, sampling, irrigation, golf course watering, private estates, etc.
- Compression type main valve closes with pressure
- Bronze drain
- Flush type has a cast iron box with lid
- 150 psig (1034 kPa/10 barg) maximum working pressure, 300 psig (2068 kPa/21 bar) test pressure

Mueller considers a fire hydrant to be a critical piece of emergency equipment used to preserve lives and property. For this reason all Mueller Fire Hydrants are designed, built and tested to assure high performance and dependability.

Each component part of a Mueller Fire Hydrant is specially designed to assure proper and reliable operation. Attention to detail doesn't stop once the part is designed. Quality control tests are made on all component parts to assure dimensional and material integrity are maintained. Every Mueller Fire Hydrant is pressure tested and operated before it leaves our plant to assure it meets our high quality standards.

Mueller is confident it produces one of the most reliable fire hydrants available and backs this claim with a **10 YEAR LIMITED WARRANTY ON PARTS AND WORKMANSHIP** for the Mueller Super Centurion® Fire Hydrant. The claim of outstanding performance and reliability is proven by the fact that almost half of all the fire hydrants sold in the United States today are manufactured by Mueller.

A fire hydrant is exposed to the elements on a daily basis and over a period of time repairs may eventually become necessary. Mueller offers repair kits that have the same parts as are used in our regular production hydrants. When you use genuine Mueller replacement parts you are assured the part matches the manufacturer's original equipment specifications with regard to dimensions, materials and performance. Only genuine Mueller parts are marked with the Mueller name.



Typical bonnet repair kit



Typical traffic flange repair kit



Typical main valve repair kit



Typical shoe repair kit

Rev. 8-19 Shaded area indicates changes

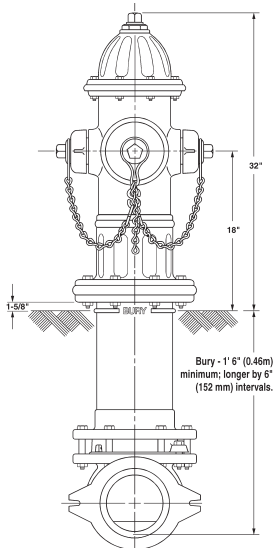
## Super Centurion Fire Hydrants

Pressure Rating		Main Valve		Nozzles		Listings	
250 PSI	350 PSI	4-1/2"	5-1/4"	Pumper	Hose	UL	FM
A421	A421HP	•		1	2	•	•
A423	A423HP		•	1	2	•	•
A424	A424HP	•		1	0		•
A425	A425HP		•	2	0	•	
A433	A433HP	•		0	2	•	•
A435	A435HP		•	0	2	•	•
A454	A454HP		•	0	3	•	•
A455	A455HP		•	0	4	•	•
A458	A458HP		•	1	3	•	•
A459	A459HP		•	2	2	•	
A461	A461HP	•		1	2	•	•
A473	A473HP		•	1	2	•	•
A477			•	1	0		

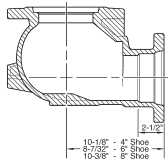
- 10 year limited warranty on material and workmanship
- Meets all applicable parts of ANSI/AWWA C502 Standard
- Post type dry barrel design
- Dry top design with O-ring sealed oil reservoir
- Traffic feature with stainless steel stem coupling
- Encapsulated, reversible, compression-type main valve closes with pressure for positive seal; it is made of rubber and is conveniently reversible providing a spare for long service life
- Operating nut available in wide variety of shapes and sizes-open left or right
- Field replaceable hose and pumper nozzles
- Hose and pumper nozzles have large radius, full flow openings for low friction loss
- Contoured shoe is designed for full flow
- Dual bronze drain valves provide effective barrel drainage
- 350 psig (2400 kPa/24 barg) maximum working pressure, 700 psig (4800 kPa/48 barg) static test pressure; 250 psig (1725 kPa/17 barg) maximum working pressure, 500 psig (3450 kPa/35 barg) static test pressure;



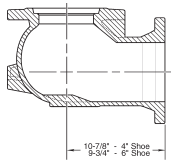
## Dimensions



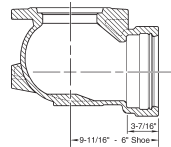
**Mechanical joint**  
standard and D-150



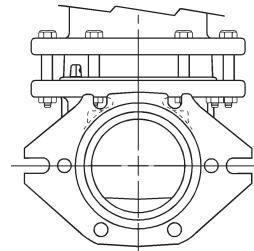
**Flange**  
ASME B16.1 Class 125  
PN 10/16 Drilling



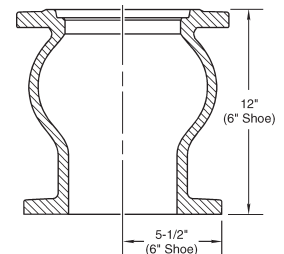
**Slip-on**



Non-rotating bolt design:  
cast-in pads eliminate need  
for anti-rotation bolts.  
**Front view detail of Mechanical  
joint (Standard only)**



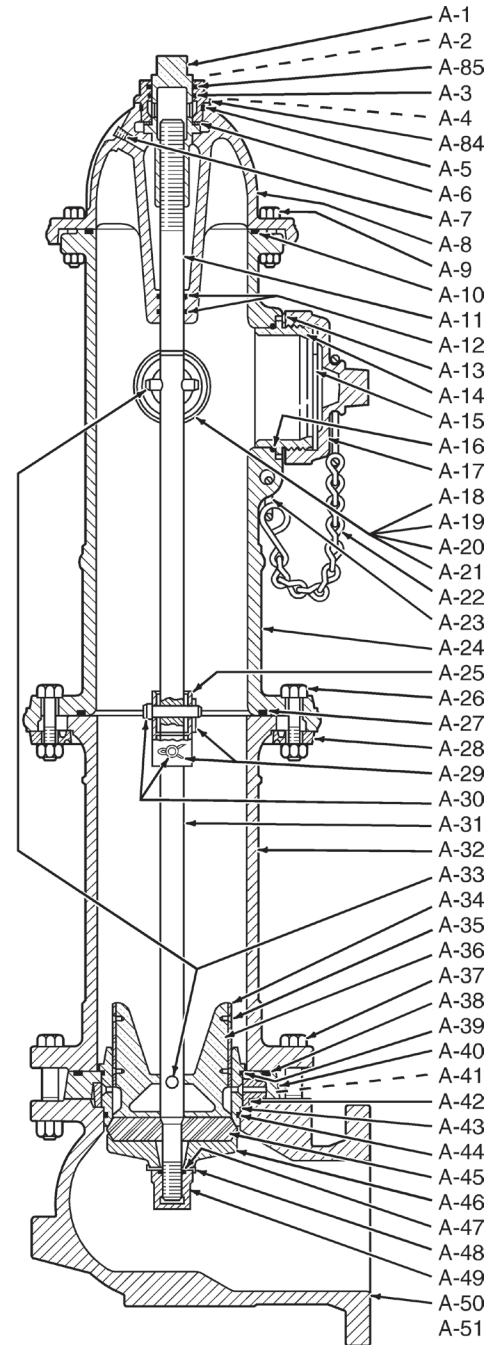
**Vertical  
Flange**  
ASME B16.1 Class 125  
PN 10/16 Drilling





**Mueller Super Centurion Fire Hydrant Parts**

Catalog Part Number	Description	Material	Material Standard
A-1	Operating Nut	Bronze	ASTM B62
A-2	Weather Cap (not shown - used only on pre-1988 models)	Cast Iron	ASTM A126 CL.B
A-3	Hold Down Nut O-ring	Rubber	ASTM D2000 - BUNA N
A-4	Hold Down Nut (not shown - used only on pre-1998 models)	Bronze	ASTM B62
A-5	Bonnet O-ring	Rubber	ASTM D2000 - BUNA N
A-6	Anti-friction Washer	Acetal	-
A-7	Oil Plug	Brass	ASTM B16
A-8	Bonnet	Cast Iron	ASTM A126 CL.B
A-9	Bonnet Bolt and Nut	Steel	SAE J429
A-10	Bonnet O-ring (1997 and newer 3-way models; all pre-1997 models and 1-way and 2-way models have flat gasket)	Rubber	ASTM D2000 - BUNA N
A-11	Upper Stem	Steel	ASTM A576 1144T
A-12	Stem O-ring	Rubber	ASTM D2000 - BUNA N
A-13	Nozzle Lock	Stainless Steel	ASTM A276
A-14	Pumper Nozzle	Bronze	ASTM B584
A-15	Pumper Nozzle Gasket	Rubber	ASTM D2000 - Neoprene
A-16	Pumper Nozzle O-ring	Rubber	ASTM D2000 - BUNA N
A-17	Pumper Nozzle Cap	Cast Iron	ASTM A126 CL.B
A-18	Hose Nozzle	Bronze	ASTM B584
A-19	Hose Nozzle Gasket	Rubber	ASTM D2000 - Neoprene
A-20	Hose Nozzle O-ring	Rubber	ASTM D2000 - BUNA N
A-21	Hose Nozzle Cap	Cast Iron	ASTM A126 CL.B
A-22	Cap Chain	Steel	Plated
A-23	Chain Ring	Steel	Plated
A-24	Upper Barrel Less Nozzles	Cast Iron	ASTM A126 CL.B
A-25	Stem Coupling	Stainless Steel	ASTM A890
A-26	Traffic Flange Bolt and Nut	Steel***	SAE J429 Grade 2*****
A-27	Traffic Flange O-ring (1997 and newer models; pre-1997 models have a flat gasket)	Rubber	ASTM D2000 - BUNA N
A-28	Traffic Flange	Cast Iron	ASTM A126 CL.B
A-29	Reusable Clip	Stainless Steel	ASTM A276
A-30	Clevis Pen	Stainless Steel	ASTM A276
A-31	Lower Stem	Steel	ASTM A576 1144T
A-32	Lower Barrel	Cast Iron	ASTM A126 CL.B
A-33	Stem Pin	Stainless Steel	ASTM A582
A-34	Drain Valve Facing	Plastic	-
A-35	Drain Valve Screw	Stainless Steel	ASTM A276
A-36	Upper Valve Plate (includes A-34 and A-35)	Bronze	ASTM B584
A-37	Shoe Bolt and Nut	Steel***	SAE J429
A-38	Drain Ring Housing O-ring (1997 and newer models; pre-1997 models have a square gasket)	Rubber	ASTM D2000 - BUNA N
A-39	Seat Ring Top O-ring	Rubber	ASTM D2000 - BUNA N
A-40	Drain Ring Housing	Cast Iron	ASTM A126 CL.B
A-41	Drain Ring Housing Bolt and Nut (not shown - used only on pre-1997 model hydrants)	Steel	ASTM A307 Plated
A-42	Drain Ring	Bronze	ASTM B62
A-43	Seat Ring	Bronze	ASTM B584
A-44	Seat Ring Bottom O-ring	Rubber	ASTM D2000 - BUNA N
A-45	Reversible Encapsulated Main Valve* (1997 and newer models only; pre-1997 models use non-reversible main valve and lower valve plate - not shown)	Rubber	ASTM D2000 reinforced Cast Iron ASTM A126 CL.B
A-46	Lower Valve Plate (1997 and newer models for reversible main valve; pre-1997 models have non-reversible main valve - not shown)	Cast Iron	ASTM A126 CL.B
A-47	Cap Nut Seal	Rubber	ASTM D2000 - Natural
A-48	Lock Washer	Stainless Steel	ASTM A276
A-49	Lower Valve Plate Nut	Cast Iron	ASTM A126 CL.B
A-50	Shoe**	Cast Iron	ASTM A536
A-84	Hold Down Nut	Bronze	ASTM B62
A-85	Weather Seal	Rubber	ASTM D2000 - EPDM
A-86	Bury Tag	Stainless Steel	300 Series
A-51	10.5 ounce Hydrant Lubricating Oil	-	-



\* Pre-1997 models may be upgraded to use the reversible main valve by also replacing the lower valve plate with the 1997 model.

\*\* 6" MJ shoe is Ductile Iron, ASTM A536

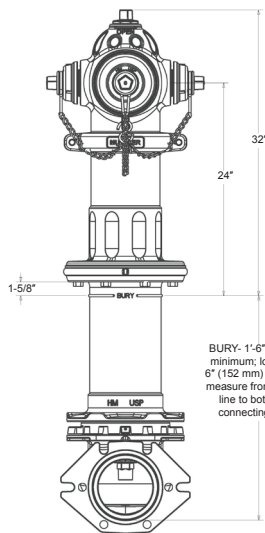
\*\*\* Stainless steel Type 316 available as an option

Rev. 8-19 Shaded area indicates changes

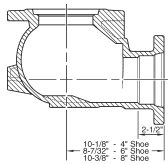
- **A-403/A-403HP Super Centurion catalog numbers**
- **UL 246, FM 1510 ANSI/AWWA C502 350 psi rated**  
**5-1/4" main valve opening 3-way (2-hose nozzle / 1 pumper nozzle)**
- A-403HP - 350 psig (2400 kPa/24 barg) maximum working pressure, 700 psig (4800 kPa/48 barg) static test pressure
- A-403 - 250 psig (1725 kPa/17 barg) maximum working pressure, 500 psig (3450 kPa/35 barg) static test pressure
- 10 year limited warranty on material and workmanship
- Meets all applicable parts of ANSI/AWWA C502 Standard
- Post type dry barrel design
- Dry top design with O-ring sealed oil reservoir
- Traffic feature with stainless steel stem coupling
- Encapsulated reversible compression-type main valve closes with pressure for positive seal; it is made of rubber and is conveniently reversible providing a spare for long service life
- Operating nut available in wide variety of shapes and sizes-open left or right
- Field replaceable hose and pumper nozzles
- Hose and pumper nozzles have large radius, full flow openings for low friction loss
- Contoured shoe is designed for full flow
- Dual bronze drain valves provide effective barrel drainage
- Lightweight upper section designed for easy maintenance



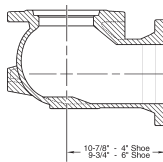
## Dimensions



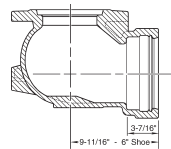
**Mechanical joint**  
standard and D-150



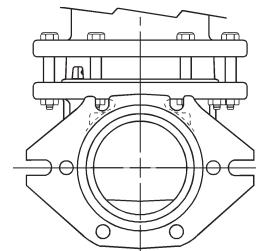
**Flange**  
ASME B16.1 Class 125  
PN 10/16 Drilling



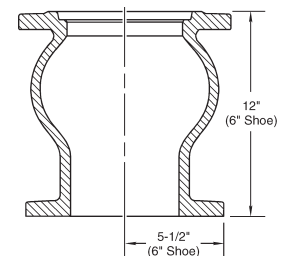
**Slip-on**



Non-rotating bolt design:  
cast-in pads eliminate need  
for anti-rotation bolts.  
**Front view detail of Mechanical  
joint (Standard only)**

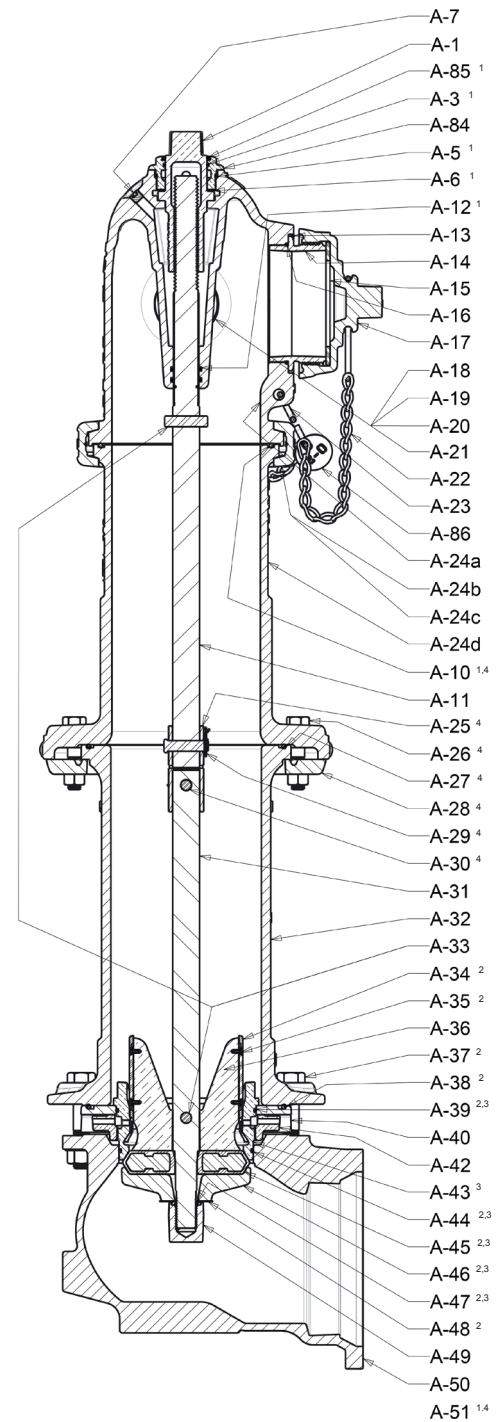


**Vertical  
Flange**  
ASME B16.1 Class 125  
PN 10/16 Drilling



## Mueller Super Centurion Fire Hydrant Parts

Catalog Part Number	Description	Material	Material Standard
A-1	Operating Nut	Bronze	ASTM B62
A-3	Hold Down Nut O-ring	Rubber	ASTM D2000 - BUNA N
A-5	Nozzle Section Top O-ring	Rubber	ASTM D2000 - BUNA N
A-6	Anti-friction Washer	Acetal	-
A-7	Oil Plug	Brass	ASTM B16
A-10	Upper Barrel Coupling O-ring	Rubber	ASTM D2000 - BUNA N
A-11	Upper Stem	Steel	ASTM A576 1144T
A-12	Stem O-ring	Rubber	ASTM D2000 - BUNA N
A-13	Nozzle Lock	Stainless Steel	ASTM A276
A-14	Pumper Nozzle	Bronze	ASTM B584
A-15	Pumper Nozzle Gasket	Rubber	ASTM D2000 - Neoprene
A-16	Pumper Nozzle O-ring	Rubber	ASTM D2000 - BUNA N
A-17	Pumper Nozzle Cap	Cast Iron	ASTM A126 CL.B
A-18	Hose Nozzle	Bronze	ASTM B584
A-19	Hose Nozzle Gasket	Rubber	ASTM D2000 - Neoprene
A-20	Hose Nozzle O-ring	Rubber	ASTM D2000 - BUNA N
A-21	Hose Nozzle Cap	Cast Iron	ASTM A126 CL.B
A-22	Cap Chain	Steel	Plated
A-23	Chain Ring	Steel	Plated
A-24a	Upper Barrel Nozzle Section Less Nozzles	Ductile Iron	ASTM A536
A-24b	Upper Barrel Coupling	Ductile Iron	ASTM A536
A-24c	Upper Barrel Coupling Bolt & Nut	Steel	SAE J429 High Strength
A-24d	Upper Barrel Traffic Section	Ductile Iron	ASTM A536
A-25	Stem Coupling	Stainless Steel	ASTM A890
A-26	Traffic Flange Bolt and Nut	Steel***	SAE J429 High Strength
A-27	Traffic Flange O-ring	Rubber	ASTM D2000 - BUNA N
A-28	Traffic Flange	Cast Iron	ASTM A126 CL.B
A-29	Reusable Clip	Stainless Steel	ASTM A276
A-30	Clevis Pin	Stainless Steel	ASTM A276
A-31	Lower Stem	Steel	ASTM A576 1144T
A-32	Lower Barrel	Cast Iron	ASTM A126 CL.B
A-33	Stem Pin	Stainless Steel	ASTM A582
A-34	Drain Valve Facing	Plastic	-
A-35	Drain Valve Facing Screw	Stainless Steel	ASTM A276
A-36	Upper Valve Plate (includes A-34 and A-35)	Bronze	ASTM B584
A-37	Shoe Bolt and Nut	Steel***	SAE J429 High Strength
A-38	Drain Ring Housing O-ring	Rubber	ASTM D2000 - BUNA N
A-39	Seat Ring Top O-ring	Rubber	ASTM D2000 - BUNA N
A-40	Drain Ring Housing	Cast Iron	ASTM A126 CL.B
A-42	Drain Ring	Bronze	ASTM B62
A-43	Seat Ring	Bronze	ASTM B584
A-44	Seat Ring Bottom O-ring	Rubber	ASTM D2000 - BUNA N
A-45	Reversible Encapsulated Main Valve	Rubber	ASTM D2000 reinforced Cast Iron ASTM A126 CL.B
A-46	Lower Valve Plate	Cast Iron	ASTM A126 CL.B
A-47	Cap Nut Seal	Rubber	ASTM D2000 - Natural
A-48	Lock Washer	Stainless Steel	ASTM A276
A-49	Lower Valve Plate Nut	Cast Iron	ASTM A126 CL.B
A-50	Shoe*	Cast Iron	ASTM A536
A-84	Hold Down Nut	Bronze	ASTM B62
A-85	Weather Seal	Rubber	ASTM D2000 - EPDM
A-86	Bury Tag	Stainless Steel	300 Series
A-51	10.5 ounce Hydrant Lubricating Oil	-	-

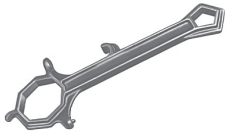


- 1 - Available as part of Bonnet Repair Kit
- 2 - Available as part of Shoe Repair Kit
- 3 - Available as part of Main Valve Repair Kit
- 4 - Available as part of Safety Flange Repair Kit

\* 6" MJ shoe is Ductile Iron, ASTM A536

\*\* Stainless steel 316 available as an option

Rev. 8-19 Shaded area indicates changes



**A-311**

**A-311 Operating wrench** - operates nozzle caps, pin and lug type hose couplings, hydrant operating nut, and hold down nut.



**A-367**

**A-367 Brass sleeve** - protects O-rings from damage when removing the bonnet from upper stem.



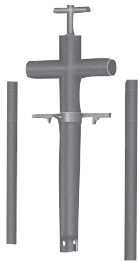
**A-316**

**A-316 Nozzle wrench** - Used to remove and install threaded in hose and pumper nozzles.  
**Sizes:** 2-1/2", 3", 3-1/2", 4", 4-1/2", and 5"



**240885**

**Heavy Duty Centurion Hold Down Nut Wrench**



**A-359**

**A-359 Seat wrench** - universal fit, used to remove main valve and seat ring from bonnet level or groundline. Wrench self-centers on barrel flange. Used on all Centurion, Modern and 107® Hydrants.



**A-359-00**

**A-359-00 Seat wrench** - universal fit, used to remove main valve and seat ring from bonnet level or ground line. Wrench self-centers on barrel flange. Used on all Super Centurion models.



**A-51**

**A-51 Hydrant lubricating oil** - 10.5 ounce container of all-weather oil.



**A-317**

**A-317 Nozzle lock installation tool** - used to install nozzle locking device.



**Integral Storz Wrench** used to remove the integral Storz Pumper Connection.  
**Sizes** - 4" - 287402  
5" - 287403



**Integral Storz Pumper Connection** - used to quickly connect to hydrants. Available on 250 psi rated Centurion or Modern hydrant.



**Bonnet Repair Kit**



**Bonnet Repair Kit consists of -**

- (1) Weather seal
- (2) Hold down nut O-rings
- (2) Bonnet O-rings
- (1) Bonnet/Upper barrel O-ring
- (1) Anti-friction washer
- (1) Bonnet flange gasket
- (2) Stem O-rings
- (1) 10.5 oz. Hydrant lubricating oil
- (1) Instruction sheet

Kit Catalog Number	
4-1/2" M.V.O.	5-1/4" M.V.O.
280355	280355

**Main Valve Repair Kit**

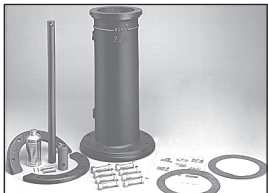


**Main Valve Repair Kit consists of -**

- (1) Top seat O-rings
- (1) Bottom seat O-rings
- (1) Main valve (reversible)
- (1) Lower valve plate (reversible)
- (1) Cap nut seals
- (1) Bronze seat ring
- (1) Instruction sheet

Kit Catalog Number	
4-1/2" M.V.O.	5-1/4" M.V.O.
280358	280359

**Extension Kit**



**Extension Kit consists of -**

- (1) Stem
- (1) Barrel
- (1) Stainless steel extension stem coupling
- (1) Extension flange
- (1) Bonnet/Upper barrel O-ring
- (3) Gaskets
- (1) Bonnet/Upper barrel O-ring
- (8) Bolts and nuts
- (2) Clevis pins
- (3) Reusable Clips
- (1) Instruction sheet
- (1) 10.5 oz. hydrant lubricating oil
- Extension lengths: 0'-6", 1'-0", 1'-6", 2'-0", 2'-6", 3'-0", 3'-6", 4'-0"

Kit Catalog Number		
4-1/2" M.V.O.	5-1/4" M.V.O.	350 psi
A-319	A-320	A-320-35

**Traffic Flange Repair Kit**



**Traffic Flange Repair Kit consists of:**

- (1) Traffic flange
- (2) Gaskets
- (8) Traffic flange bolts and nuts
- (1) Traffic flange O-ring
- (1) Bonnet/Upper barrel O-ring
- (1) 10.5 oz. hydrant lubricating oil
- (1) Stainless steel stem coupling
- (2) Clevis pins
- (3) Reusable Clips
- (1) Instruction sheet

Kit Catalog Number		
4-1/2" M.V.O.	5-1/4" M.V.O.	350 psi
A-300	A-301	A-301-35

**Shoe Repair Kit**



**Shoe Repair Kit consists -**

- (2) Drain valve facings
- (4) Drain valve facing screws
- (1) Drain ring housing gasket
- (1) Top seat O-ring
- (1) Bottom seat O-ring
- (1) Gasket
- (1) Main valve (reversible)
- (1) Lower valve plate (reversible)
- (1) Cap nut seal
- (1) Lock washer
- (6) Shoe bolts and nuts
- (1) 10.5 oz. hydrant lubricating oil
- (1) Instruction sheet

Kit Catalog Number	
4-1/2" M.V.O.	5-1/4" M.V.O.
280356	280357

**A-417 107®  
Conversion Kit**

**Replaces 107 hydrant bonnet with Centurion stop-in-bonnet style. Open left, 1-1/2" pentagon operating nut.**

**Bonnet Replacement Kit consists of -**

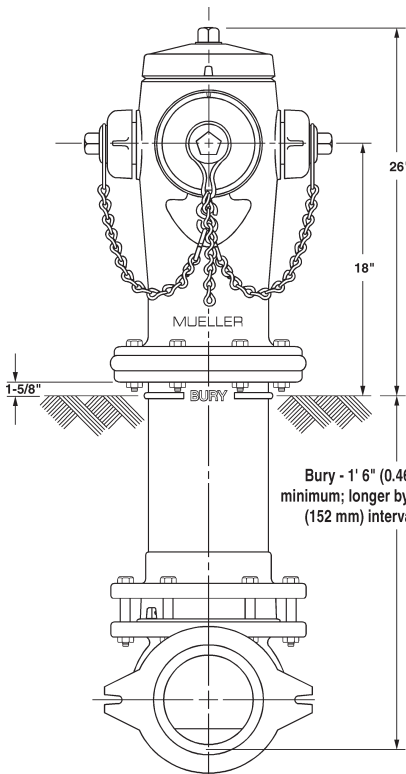
- (1) Bonnet
- (1) Bonnet gasket
- (8) Bonnet bolts/nuts
- (1) Operating nut
- (1) Hold down nut
- (1) Stop nut
- (1) Oil plug
- (1) Anti-friction washer
- (1) Weather seal
- (1) Hold down nut O-ring
- (2) Bonnet O-rings
- (2) Stem O-rings
- (1) Upper stem assembly
- (1) 10.5 oz. hydrant lubricating oil
- (1) Instruction sheet form 11089

Rev. 8-19 Shaded area indicates changes

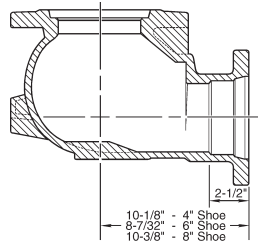
- **Catalog numbers -**  
**A-442** 5-1/4" main valve opening 3-way (2 hose nozzles and 1 pumper nozzle)
- Modern, sleek exterior design
- Meets all applicable parts of ANSI/AWWA C502 Standard
- Post type dry barrel design
- Dry top design with O-ring sealed oil reservoir
- Traffic feature with stainless steel stem coupling
- Encapsulated, reversible, compression type main valve closes with pressure for positive seal; it is made of rubber and is conveniently reversible providing a spare for long service life
- Operating nut available in wide variety of shapes and sizes
- Field replaceable hose and pumper nozzles
- Hose and pumper nozzles have large radius, full flow openings for low friction loss
- Contoured shoe is designed for full flow
- Dual bronze drain valves provide effective barrel drainage
- 200 psig (1375 kPa/13.75 barg; 400 psig (2750 kPa/27.5 barg) test pressure



## Dimensions

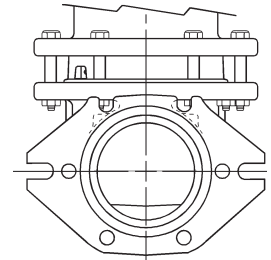


**Mechanical joint standard and D-150**

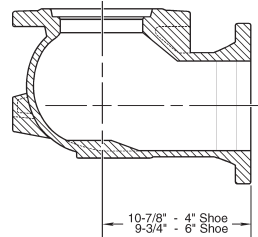


Non-rotating bolt design: cast-in pads eliminate need for anti-rotation bolts.

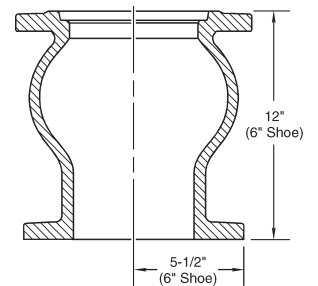
**Front view detail of Mechanical joint (Standard only)**



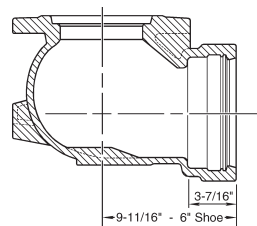
**Flange**  
ASME B16.1 Class 125  
PN 10/16 Drilling



**Vertical Flange**

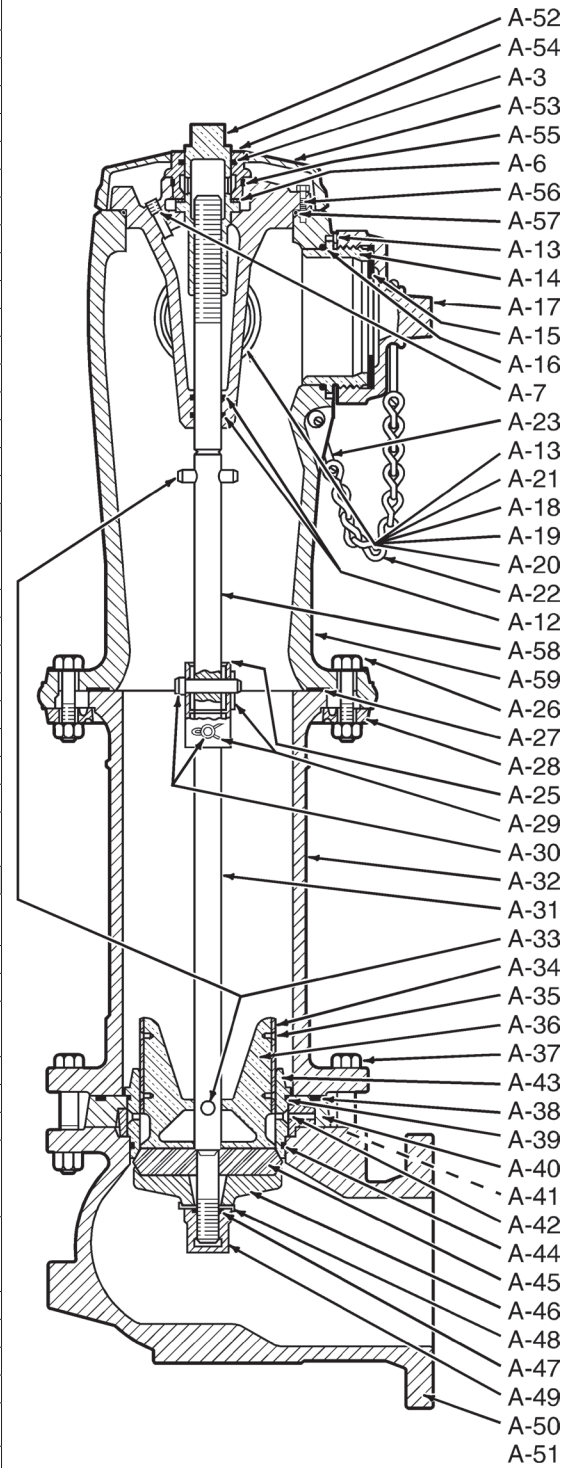


**Slip-on**



Mueller Modern Centurion Fire Hydrant Parts

Catalog Part Number	Description	Material	Material Standard
A-3	Hold Down Nut O-ring	Rubber	ASTM D2000 - BUNA N
A-5	Bonnet O-ring	Rubber	ASTM D2000 - BUNA N
A-6	Anti-friction Washer	Acetal	-
A-7	Oil Plug	Brass	ASTM B16
A-12	Stem O-ring	Rubber	ASTM D2000 - BUNA N
A-13	Nozzle Lock	Stainless Steel	ASTM A276
A-14	Pumper Nozzle	Bronze	ASTM B584
A-15	Pumper Nozzle Gasket	Rubber	ASTM D2000 - Neoprene
A-16	Pumper Nozzle O-ring	Rubber	ASTM D2000 - BUNA N
A-17	Pumper Nozzle Cap	Cast Iron	ASTM A126 CL.B
A-18	Hose Nozzle	Bronze	ASTM B584
A-19	Hose Nozzle Gasket	Rubber	ASTM D2000 - Neoprene
A-20	Hose Nozzle O-ring	Rubber	ASTM D2000 - BUNA N
A-21	Hose Nozzle Cap	Cast Iron	ASTM A126 CL.B
A-22	Cap Chain	Steel	Plated
A-23	Chain Ring	Steel	Plated
A-25	Stem Coupling	Stainless Steel	ASTM A890
A-26	Traffic Flange Bolt and Nut	Steel***	SAE J429
A-27	Traffic Flange O-ring (1997 and newer models; pre-1997 models have a flat gasket)	Rubber	ASTM D2000 BUNA-N
A-28	Traffic Flange	Cast Iron	ASTM A126 CL.B
A-29	Reusable Clip	Stainless Steel	ASTM A276
A-30	Clevis Pin	Stainless Steel	ASTM A276
A-31	Lower Stem	Steel	ASTM A576 Grade 1144T
A-32	Lower Barrel	Cast Iron	ASTM A126 CL.B
A-33	Stem Pin	Stainless Steel	ASTM A276
A-34	Drain Valve Facing	Plastic	-
A-35	Drain Valve Screw	Stainless Steel	ASTM A276
A-36	Upper Valve Plate (includes A-34 and A-35)	Bronze	ASTM B584
A-37	Shoe Bolt and Nut	Steel***	SAE J429
A-38	Drain Ring Housing O-ring (1997 and newer models; pre-1997 models have a square gasket)	Rubber	ASTM D2000 - BUNA N
A-39	Seat Ring Top O-ring	Rubber	ASTM D2000 - BUNA N
A-40	Drain Ring Housing	Cast Iron	ASTM A126 CL.B
A-41	Drain Ring Housing Bolt and Nut (not shown - used only on pre-1997 model hydrants)	Steel	ASTM A307 Plated
A-42	Drain Ring	Bronze	ASTM B62
A-43	Seat Ring	Bronze	ASTM B584
A-44	Seat Ring Bottom O-ring	Rubber	ASTM D2000 - BUNA N
A-45	Reversible Encapsulated Main Valve* (1997 and newer models only; pre-1997 models use reversible main valve and lower valve plate - not shown)	Rubber	ASTM D2000 reinforced Cast Iron ASTM A126 CL.B
A-46	Lower Valve Plate (1997 and newer models for reversible main valve; pre-1997 models have non-reversible main valve - not shown)	Cast Iron	ASTM A126 CL.B
A-47	Cap Nut Seal	Rubber	ASTM D2000 - Natural
A-48	Lock Washer	Stainless Steel	ASTM A276
A-49	Lower Valve Plate Nut	Cast Iron	ASTM A126 CL.B
A-50	Shoe**	Cast Iron	ASTM A536
A-51	10.5 oz. Hydrant Lubricating Oil (not shown)	-	-
A-52	Operating Nut	Bronze	ASTM B62
A-53	Weather Cap	Cast Iron	ASTM A126 CL.B
A-54	Hold Down Nut	Bronze	ASTM B62
A-55	Housing	Cast Iron	ASTM A126 CL.B
A-56	Housing Bolt	Steel	SAE J429
A-57	Top Housing O-ring	Rubber	ASTM D2000 - BUNA N
A-58	Upper Stem	Steel	ASTM A576 Gade 1144T
A-59	Upper Barrel Less Nozzles	Cast Iron	ASTM A126 CL.B
A-86	Bury Tag	Stainless Steel	300 Series

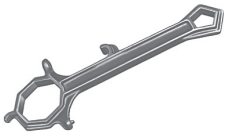


\* Pre-1997 models may be upgraded to use the reversible main valve by also replacing the lower valve plate with the 1997 model.

\*\* 6" MJ shoe is Ductile Iron, ASTM A536

\*\*\* Stainless steel 316 available as an option

Rev. 7-19 Shaded area indicates changes



**A-311**

**A-311 Operating wrench** - operates nozzle caps, pin and lug type hose couplings, hydrant operating nut, and hold down nut.



**A-367**

**A-367 Brass sleeve** - protects O-rings from damage when removing the bonnet from upper stem.



**A-359**

**A-359 Seat wrench** - universal fit, used to remove main valve and seat ring from bonnet level or groundline. Wrench self-centers on barrel flange. Used on all Centurion, Modern and 107® Hydrants.



**A-359-00 Seat wrench** - universal fit, used to remove main valve and seat ring from bonnet level or ground line. Wrench self-centers on barrel flange. Used on all Super Centurion models.



**A-316**

**A-316 Nozzle wrench** - Used to remove and install threaded in hose and pumper nozzles.  
**Sizes:** 2-1/2", 3", 3-1/2", 4", 4-1/2", and 5"



**A-317**

**A-317 Nozzle lock installation tool** - used to install nozzle locking device.



**A-51**

**A-51 Hydrant lubricating oil** - 10.5 ounce container of all-weather oil.



**Integral Storz Wrench** used to remove the integral Storz Pumper Connection.  
**Sizes** - 4" - 287402  
 5" - 287403



**Integral Storz Pumper Connection** - used to quickly connect to hydrants. Available on 250 psi rated Centurion or Modern hydrant.



**Shoe Repair Kit**



<b>Kit Catalog Number</b>
5-1/4" M.V.O
280357

**Shoe Repair Kit consists of:**

- (2) Drain valve facings
- (4) Drain valve facing screws
- (1) Drain ring housing gasket
- (1) Drain ring housing O-ring
- (1) Top seat O-ring
- (1) Bottom seat O-ring
- (1) Main valve (reversible)
- (1) Lower valve plate (reversible)
- (1) Cap nut seal
- (1) Lock washer
- (6) Shoe bolts and nuts
- (2) Drain ring bolts and nuts
- (1) 10.5 oz. hydrant lubricating oil
- (1) Instruction sheet

**Main Valve Repair Kit**

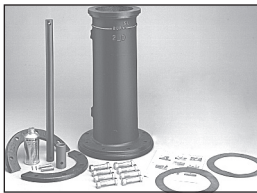


<b>Kit Catalog Number</b>
5-1/4" M.V.O
280359

**Main Valve Repair Kit consists of:**

- (1) Top seat O-rings
- (1) Bottom seat O-rings
- (1) Main valve (reversible)
- (1) Lower valve plate (reversible)
- (1) Cap nut seals
- (1) Bronze seat ring
- (1) Instruction sheet

**Extension Kit**

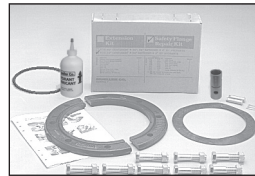


<b>Kit Catalog Number</b>
5-1/4" M.V.O
A-320

**Extension Kit consists of:**

- (1) Stem
- (1) Barrel
- (1) Stainless steel extension stem coupling
- (1) Extension flange
- (2) Gaskets
- (8) Bolts and nuts
- (2) Clevis pins
- (3) Reusable Clips
- (1) 10.5 oz. hydrant lubricating oil
- (1) Instruction sheet
- Extension lengths: 0'-6", 1'-0", 1'-6", 2'-0", 2'-6", 3'-0", 3'-6", 4'-0", 4'-6" & 5'-0"

**Traffic Flange Repair Kit**



<b>Kit Catalog Number</b>
5-1/4" M.V.O
A-301

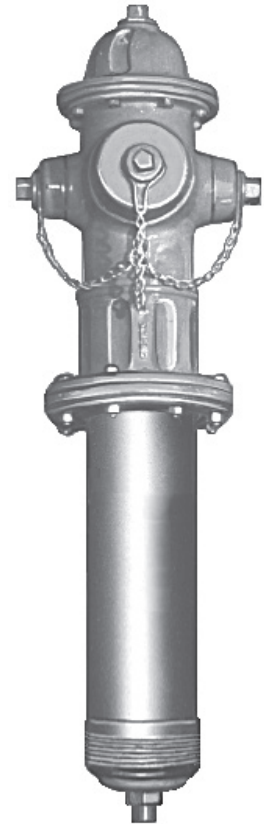
**Traffic Flange Repair Kit consists of:**

- (1) Traffic flange
- (2) Gaskets
- (8) Traffic flange bolts and nuts
- (1) Traffic flange O-ring
- (1) Bonnet/Upper barrel O-ring
- (1) 10.5 oz. hydrant lubricating oil
- (1) Stainless steel stem coupling
- (3) Reusable Clips
- (3) Cotter pins
- (1) Instruction sheet

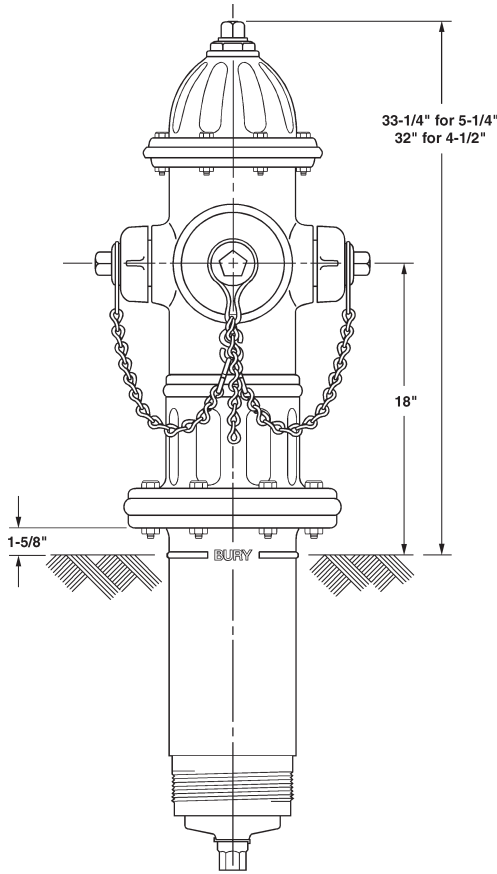
Rev. 9-17 Shaded area indicates changes

- **Catalog numbers -**
  - A-466** 4-1/2"\* main valve opening 3-way (2 hose nozzles and 1 pumper nozzle) fits 4" regular R.D.Wood shoe
  - A-467** 5-1/4" main valve opening 3-way (2 hose nozzles and 1 pumper nozzle) fits 6" regular R.D.Wood shoe
  - A-468** 5-1/4" main valve opening 3-way (2 hose nozzles and 1 pumper nozzle) fits 5" bronze lined R.D.Wood shoe
- Meets all applicable parts of ANSI/AWWA C502 Standard
- Post type dry barrel design
- Dry top design with O-ring sealed oil reservoir
- Traffic feature with stainless steel stem coupling
- Encapsulated, Reversible, Compression type patented main valve closes with pressure for positive seal; it is made of rubber and is conveniently reversible providing a spare for long service life
- Operating nut available in wide variety of shapes and sizes
- Field replaceable hose and pumper nozzles
- Hose and pumper nozzles have large radius, full flow openings for low friction loss
- Dual bronze drain valves provide effective barrel drainage
- 200 psig (1400 kPa/14 barg) maximum working pressure, 400 psig (2800 kPa/28 barg) test pressure

\*4-1/2" M.V.O. hydrants have 5-1/4" bonnets, upper barrels, traffic flanges and lower barrels and are marked 5-1/4" even though the main valve opening is 4-1/2".

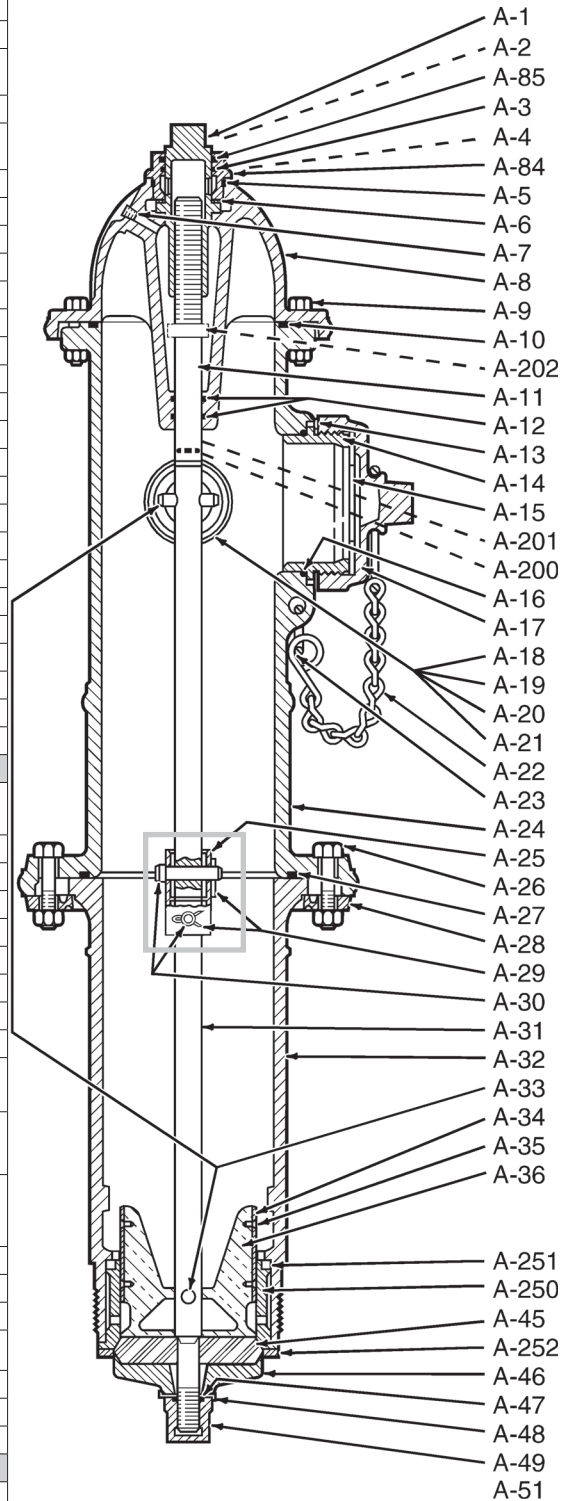


## Dimensions



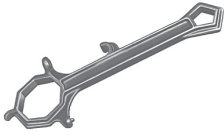
Mueller Centurion Spin-In Fire Hydrant Parts

Catalog Part Number	Description	Material	Material Standard
A-1	Operating Nut	Bronze	ASTM B62
A-2	Weather Cap (not shown - used only on pre-1988 models)	Cast Iron	ASTM A126 CL.B
A-3	Hold Down Nut O-ring	Rubber	ASTM D2000 - BUNA N
A-4	Hold Down Nut (not shown - used only on pre-1988 models)	Bronze	ASTM B62
A-5	Bonnet O-ring	Rubber	ASTM D2000 - BUNA N
A-6	Anti-friction Washer	Acetal	-
A-7	Oil Plug	Brass	ASTM B16
A-8	Hose Nozzle Cap	Cast Iron	ASTM A126 CL.B
A-9	Hose Nozzle Gasket	Rubber	ASTM D2000 - Neoprene
A-10	Hose Nozzle	Bronze	ASTM B584
A-11	Upper Stem	Steel	ASTM A576 1144T
A-12	Stem O-ring	Rubber	ASTM D2000 - BUNA N
A-13	Nozzle Lock	Stainless Steel	ASTM A276
A-14	Pumper Nozzle	Bronze	ASTM B584
A-15	Pumper Nozzle Gasket	Rubber	ASTM D2000 - Neoprene
A-16	Pumper Nozzle O-ring	Rubber	ASTM D2000 - BUNA N
A-17	Pumper Nozzle Cap	Cast Iron	ASTM A126 CL.B
A-18	Hose Nozzle	Bronze	ASTM B584
A-19	Hose Nozzle Gasket	Rubber	ASTM D2000 - Neoprene
A-20	Hose Nozzle O-ring	Rubber	ASTM D2000 - BUNA N
A-21	Hose Nozzle Cap	Cast Iron	ASTM A126 CL.B
A-22	Cap Chain	Steel	Plated
A-23	Chain Ring	Steel	Plated
A-24	Upper Barrel	Cast Iron	ASTM A126 CL.B
A-25	Stem Coupling	Stainless Steel	ANSI C1018 Plated
A-26	Traffic Flange Bolt and Nut	Steel	SAE J429
A-27	Traffic Flange O-ring (1997 and newer models; pre-1997 models have a flat gasket)	Rubber	ASTM D2000 - BUNA N
A-28	Traffic Flange	Cast Iron	ASTM A126 CL.B
A-29	Reusable Clip	Stainless Steel	ASTM A276
A-30	Clevis Pin	Stainless Steel	ASTM A276
A-31	Lower Stem	Steel	ASTM A576 1144T
A-32	Lower Barrel	Cast Iron	ASTM A126 CL.B
A-33	Stem Pin	Stainless Steel	ASTM A582
A-34	Drain Valve Facing	Plastic	-
A-35	Drain Valve Screw	Stainless Steel	ASTM A276
A-36	Upper Valve Plate (includes A-34 and A-35)	Bronze	ASTM B584
A-45*	Reversible Encapsulated Main Valve* (1997 and newer models only; pre-1997 models use non-reversible main valve and lower valve plate - not shown)	Rubber	ASTM D2000 reinforced Cast Iron ASTM A126 CL.B
A-46	Lower Valve Plate (1997 and newer models for reversible main valve; pre-1997 models have non-reversible main valve - not shown)	Cast Iron	ASTM A126 CL.B
A-47	Cap Nut Seal	Rubber	ASTM D2000 - Natural
A-48	Lock Washer	Stainless Steel	ASTM A276
A-49	Lower Valve Plate Nut	Cast Iron	ASTM A126 CL.B
A-51	10.5 oz. Hydrant Lubricating Oil (not shown)	-	-
A-52	Hold Down Nut	Bronze	ASTM B62
A-85	Weather Seal	Rubber	ASTM D2000 - EPDM
A-84	Hold Down Nut	Bronze	ASTM B584
A-86	Bury Tag	Stainless Steel	300 Series
A-200	Sleeve O-ring	Rubber	ASTM D2000 - Nitrile
A-201	Sleeve	Copper	ASTM B75
A-201	Stop Nut	Ductile Iron	ASTM A395
A-250	Seat Ring	Bronze	ASTM B584
A-251	Top Seat Ring Gasket	Rubber	ASTM D2000 - Nitrile
A-252	Bottom Seat Ring Gasket	Rubber	ASTM D2000 - Nitrile



\* Pre-1997 models may be upgraded to use the reversible main valve by also replacing the lower valve plate with the 1997 model.

Rev. 8-19 Shaded area indicates changes



**A-311**

**A-311 Operating wrench** - operates nozzle caps, pin and lug type hose couplings, hydrant operating nut, and hold down nut.



**A-367**

**A-367 Brass sleeve** - protects O-rings from damage when removing the bonnet from upper stem.



**A-316**

**A-316 Nozzle wrench** - Used to remove and install threaded in hose and pumper nozzles. **Sizes:** 2-1/2", 3", 3-1/2", 4", 4-1/2", and 5"



**A-359**

**A-359 Seat wrench** - universal fit, used to remove main valve and seat ring from bonnet level or groundline. Wrench self-centers on barrel flange. Used on all Centurion, Modern and 107® Hydrants.



**A-317**

**A-317 Nozzle lock installation tool** - used to install nozzle locking device.



**A-51**

**A-51 Hydrant lubricating oil** - 10.5 ounce container of all-weather oil.



**Bonnet Repair Kit**



**Bonnet Repair Kit consists of:**

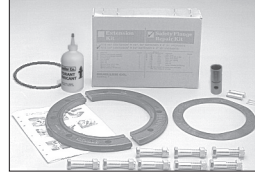
- (1) Weather seal
- (1) Hold down nut O-ring
- (1) Bonnet O-ring
- (1) Bonnet/Upper barrel O-ring
- (1) Anti-friction washer
- (1) Bonnet gasket
- (2) Stem O-rings
- (1) 10.5 oz. Hydrant lubricating oil

**Kit Catalog Number**

5-1/4" M.V.O

280355

**Traffic Flange Repair Kit**



**Traffic Flange Repair Kit consists of:**

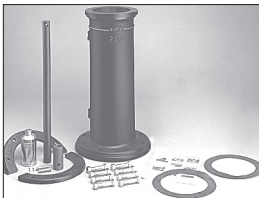
- (1) Traffic flange
- (2) Gaskets
- (8) Traffic flange bolts and nuts
- (1) Traffic flange O-ring
- (1) Bonnet/Upper barrel O-ring
- (1) 10.5 oz. hydrant lubricating oil
- (1) Stainless steel stem coupling
- (2) Clevis pins
- (3) Reusable Clips
- (1) Instruction sheet

**Kit Catalog Number**

5-1/4" M.V.O

A-301

**Extension Kit**



**Extension Kit consists of:**

- (1) Stem
- (1) Barrel
- (1) Bonnet/Upper barrel O-ring
- (1) Stainless steel extension stem coupling
- (1) Extension flange
- (1) Traffic flange O-ring
- (2) Gaskets
- (8) Bolts and nuts
- (2) Clevis pins
- (3) Reusable Clips
- (1) 10.5 oz. hydrant lubricating oil
- (1) Instruction sheet

**Kit Catalog Number**

5-1/4" M.V.O

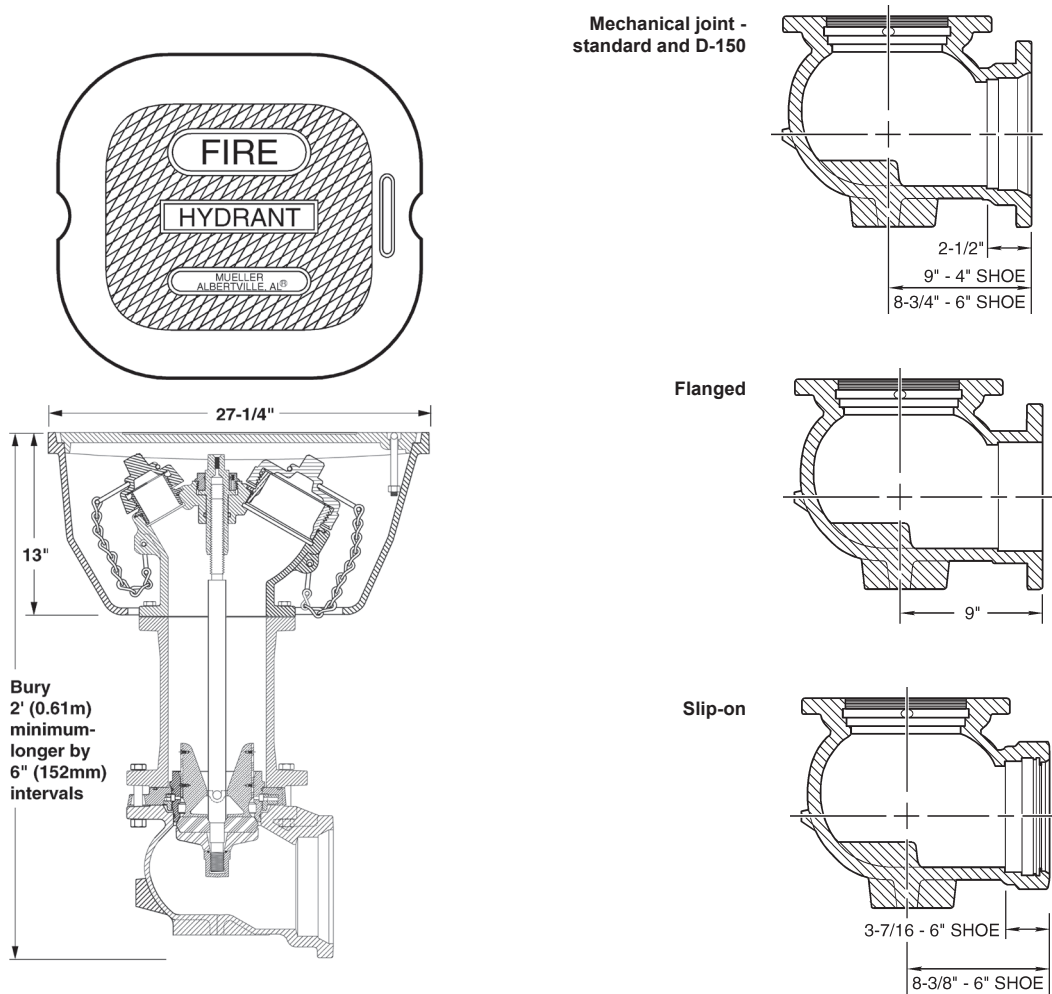
A-320

Rev. 7-19 Shaded area indicates changes

- **Catalog Numbers -**  
**A-415** 5-1/4" main valve opening 3-way (2 hose nozzles and 1 pumper nozzle)
- Meets all applicable parts of ANSI/AWWA C502 Standard
- Flush type dry barrel design
- Cast iron flush box with non-locking lid
- Encapsulated, Reversible, Compression type patented main valve closes with pressure for positive seal; it is made of rubber and is conveniently reversible providing a spare for long service life
- Operating nut available in wide variety of shapes and sizes
- Hose and pumper nozzles have large radius, full flow openings for low friction loss
- Contoured shoe is designed for full flow
- Dual bronze drain valves provide effective barrel drainage
- 250 psig (1725 kPa/17 barg) maximum working pressure, 500 psig (3450 kPa/35 barg) test pressure

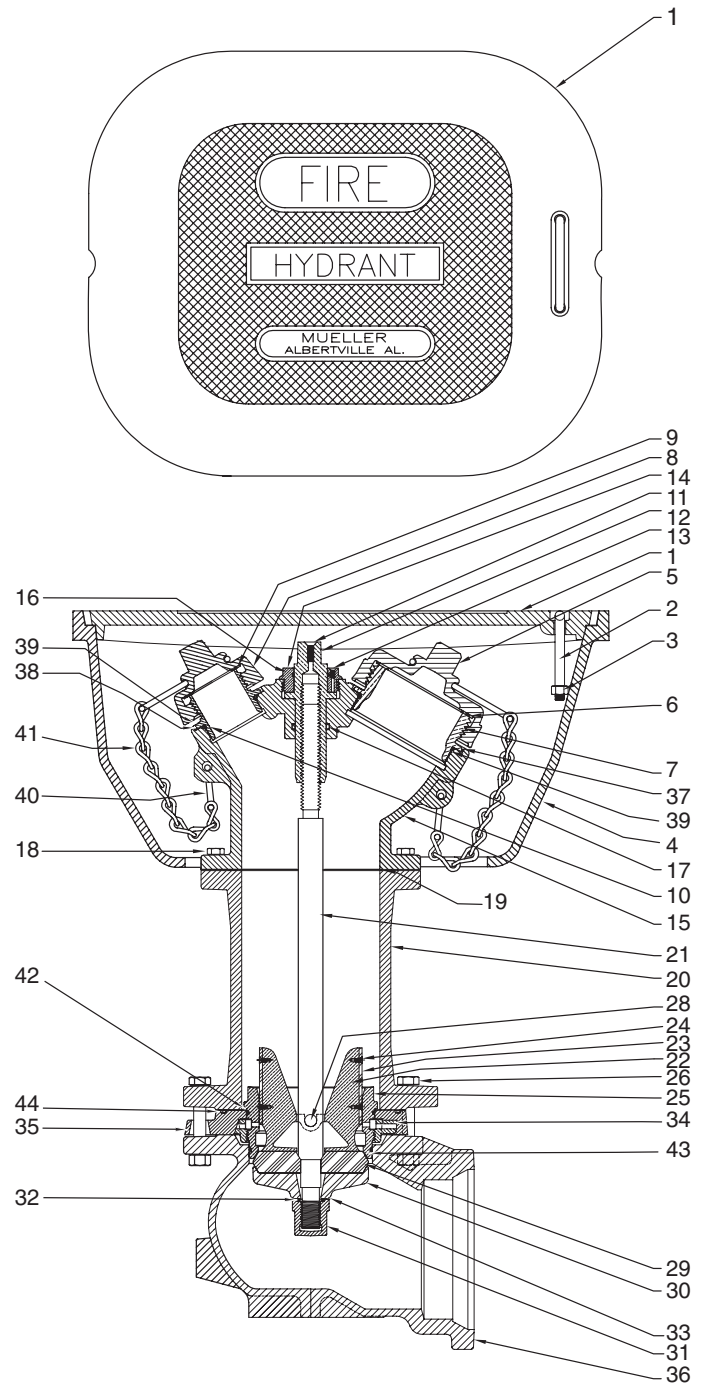


### Dimensions



Mueller 5-1/4 Flush Type Fire Hydrant Parts

Catalog Part Number	Description	Material	Material Standard
1	Flush Box Lid (non-locking)	Cast Iron	ASTM A126 CL.B
2	Lift Handle	HRS	-
3	Lift Handle Nut	Steel	-
4	Flush Box	Cast Iron	ASTM A126 CL.B
5	Pumper Nozzle Cap	Cast Iron	ASTM A126 CL.B
6	Pumper Nozzle Gasket	Rubber	ASTM D2000 - Neoprene
7	Pumper Nozzle	Bronze	ASTM B584
8	Hose Nozzle Cap	Cast Iron	ASTM A126 CL.B
9	Hose Nozzle Gasket	Rubber	ASTM D2000 - Neoprene
10	Hose Nozzle	Bronze	ASTM B584
11	Oil Screw for Operating Nut	Brass	ASTM B36
12	Operating Nut	Bronze	ASTM B584
13	Oil Screw in Hold Down Nut	Brass	ASTM B36
14	Hold Down Nut	Bronze	ASTM B62
15	Upper Barrel	Cast Iron	ASTM A126 CL.B
16	Hold Down Nut O-ring	Rubber	ASTM D2000
17	O-ring Seal	Rubber	ASTM D2000
18	Cap Screw	Steel	ANSI B18.2.1
19	Barrel Flange Gasket	Rubber	ASTM D2000
20	Lower Barrel	Cast Iron	ASTM A126 CL.B
21	Stem	Steel	ASTM A576 1144T
22	Upper Valve Plate	Bronze	ASTM B584
23	Drain Valve Facing	Plastic	-
24	Drain Valve Facing Screw	Stainless Steel	ASTM A276
25	Seat Ring	Bronze	ASTM B584
26	Shoe Bolt and Nut	Steel	SAE J429
28	Stem Pin	Stainless Steel	-
29*	Reversible Encapsulated Main Valve <i>pre-2006 models have non-reversible main valve and lower valve plate - not shown</i>	Rubber	ASTM D2000 reinforced Cast Iron ASTM A126 CL.B
30	Lower Valve Plate <i>Pre-2006 models have non-reversible main valve and lower valve plate - not shown</i>	Cast Iron	ASTM A126 CL.B
31	Valve Plate Nut	Cast Iron	ASTM A126 CL.B
32	Cap Nut Seal	Rubber	ASTM D2000 - Natural
33	Lock Washer	Stainless Steel	Type 304
34	Drain Ring	Bronze	ASTM B584
35	Drain Ring Housing	Cast Iron	ASTM A126 CL.B
36	Shoe**	Cast Iron	ASTM A536
37	Pumper Nozzle O-ring	Rubber	ASTM D2000 - BUNA N
38	Hose Nozzle O-ring	Rubber	ASTM D2000 - BUNA N
39	Nozzle Lock	Stainless Steel	ASTM A276
40	Chain Hook	Steel	Plated
41	Chain	Steel	Plated
42	Top Seat O-ring	Rubber	ASTM D2000 - BUNA N
43	Bottom Seat O-ring	Rubber	ASTM D2000 - BUNA N
44	Drain Ring O-ring	Rubber	ASTM D2000 - BUNA N



\* Pre-1997 models may be upgraded to use the reversible main valve by also replacing the lower valve plate with the 1997 model.

\*\* 6" MJ shoe is Ductile Iron, ASTM A536

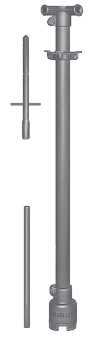
Rev. 4-15 Shaded area indicates changes

---



**A-314**

**A-314 Operating wrench** - operates nozzle caps, pin and lug type hose couplings, hydrant operating nut, and hold down nut.



**A-346**

**A-346 Seat wrench** - Adjustable, used to remove main valve and seat ring from ground line level. For use with A-415 hydrant.



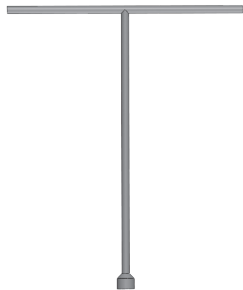
**A-316**

**A-316 Nozzle wrench** - Used to remove and install threaded in hose and pumper nozzles.  
**Sizes:** 2-1/2", 3", 3-1/2", 4", 4-1/2", and 5"



**A-317**

**A-317 Nozzle lock installation tool** - used to install nozzle locking device.



**A-415**

**A-415 Wrench** - Operating wrench for use with A-415 flush hydrants.

Part #290608: 1-1/2" pent.

Part #290610: 1-1/8" pent.

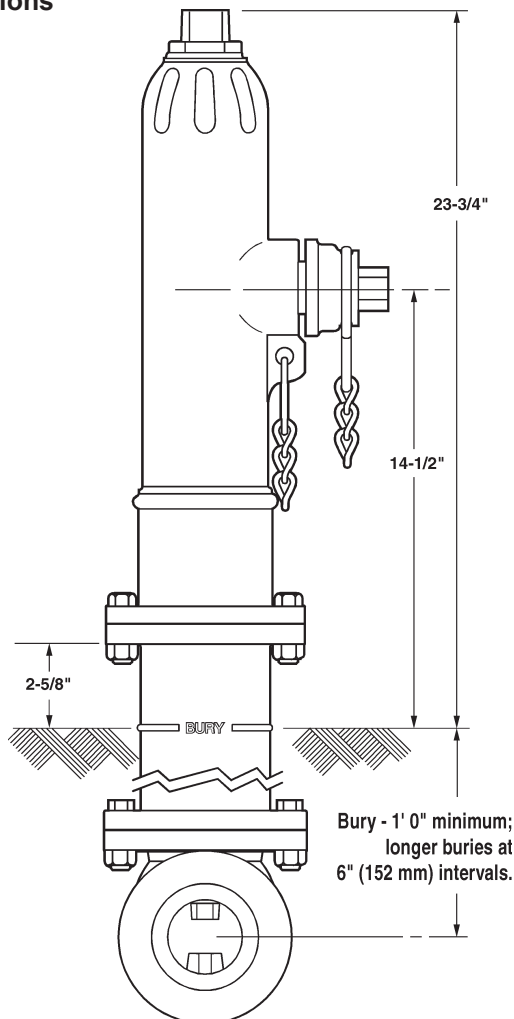
---



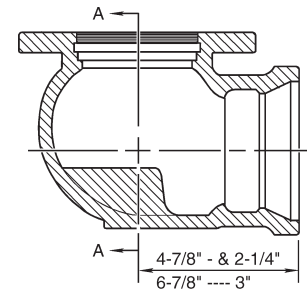
- **Catalog numbers -**  
**A-411** 2-1/8" main valve opening two way (two 2-1/2" hose nozzles)  
**A-411** 2-1/8" main valve opening one way (one 2-1/2" hose nozzle)
- Meets all applicable parts of ANSI/AWWA C502 Standard
- Post type dry barrel design
- Compression type main valve closes with pressure
- Operating nut available in wide variety of shapes and sizes
- Field replaceable hose nozzles
- Hose nozzles have large radius, full flow openings for low friction loss
- Contoured shoe is designed for full flow
- Dual bronze drain valves provide effective barrel drainage
- 150 psig (1000 kPa/10 barg) maximum working pressure, 300psig (2100 kPa/21 bar) test pressure



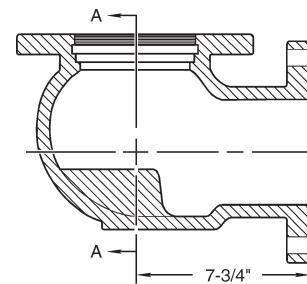
**Dimensions**



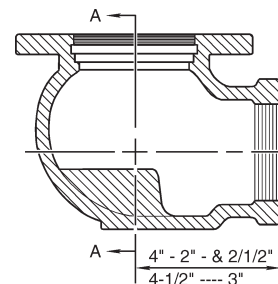
**2" and 3" Mechanical joint**



**3" Flange**



**2", 2-1/2", and 3" Threaded**

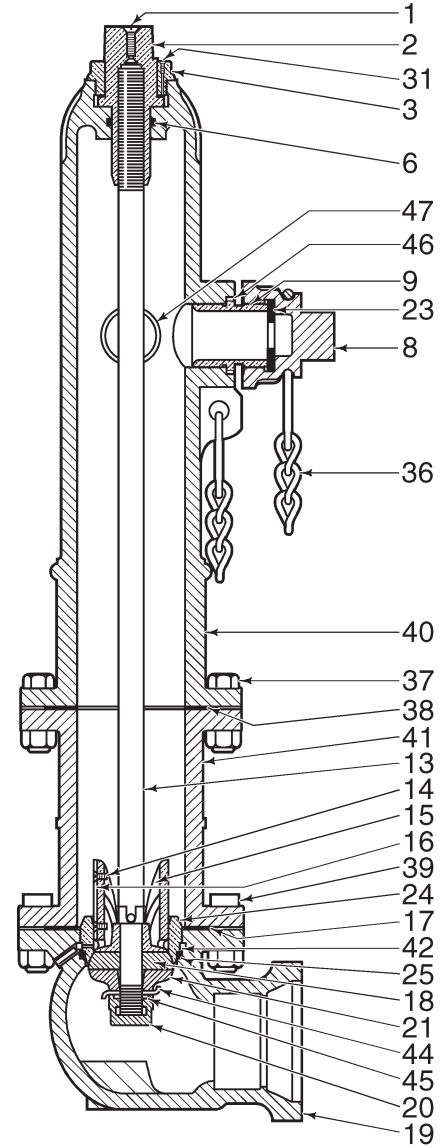


Shaded area indicates change Rev. 7-19

### Mueller 2-1/8" Post Type Fire Hydrant Parts

Catalog Part Number	Description	Material	Material Standard
1	Oil Screw for Operating Nut	Brass	ASTM B36
2	Operating Nut	Bronze	ASTM B584
3	Hold Down Nut	Bronze	ASTM B62
6	Operating Nut O-ring	Rubber	ASTM D2000 - BUNA N
8	Hose Nozzle Cap	Cast Iron	ASTM A126 CL.B
9	Hose Nozzle	Bronze	ASTM B584
13	Stem	Steel	ASTM A575
14	Drain Valve Screw	Stainless Steel	-
15	Upper Valve Plate*	Bronze	ASTM B584
16	Drain Valve Facing	Plastic	-
17	Shoe Gasket	Rubber	ASTM D2000 - SBR
18	Main Valve	Rubber	ASTM D2000
19	Shoe	Ductile Iron	ASTM A536
20	Valve Plate Nut	Ductile Iron	ASTM A536
21	Lower Valve Plate	Cast Iron	ASTM A126 CL.B
23	Hose Nozzle O-ring	Rubber	ASTM D2000 - BUNA N
24	Seat Ring	Bronze	ASTM B584
25	Seat Ring Gasket	Copper	ASTM B372
31	Oil Screw	Brass	ASTM B36
31B	O-ring (for oil screw)	Rubber	ASTM D2000 - BUNA N
36	Nozzle Cap Chain	Steel	Plated
37	Barrel Flange Bolt and Nut	Steel	SAE J429
38	Barrel Flange Gasket	Rubber	ASTM D2000 - BUNA N
39	Shoe Bolt and Nut	Steel	SAE J429
40	Upper Barrel	Cast Iron	ASTM A126 CL.B
41	Lower Barrel	Cast Iron	ASTM A126 CL.B
42	O-ring	Rubber	ASTM D2000 - BUNA N
44	Valve Nut Washer	Stainless Steel	Type 304
45	Valve Nut Seal	Rubber	ASTM D2000 - BUNA N
46	Nozzle Lock	Stainless Steel	ASTM A276
47	Hose Nozzle Gasket	Rubber	ASTM D2000 - Neoprene

\* Includes items #14 and #16. For pre-1986 models, contact customer service.



**A-312**

**A-312 Operating wrench** - operates nozzle caps, pin and lug type hose couplings, hydrant operating nut and hold down nut.



**A-347**

**A-347 Seat wrench** - Adjustable, used to remove main valve and seat ring from ground line level.



**A-316**

**A-316 Nozzle wrench** - Used to remove and install threaded in hose and pumper nozzles.



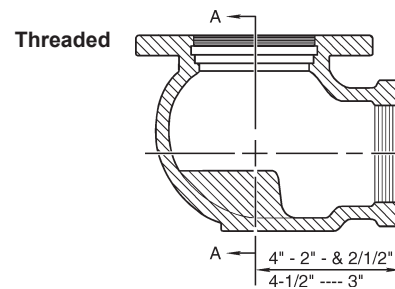
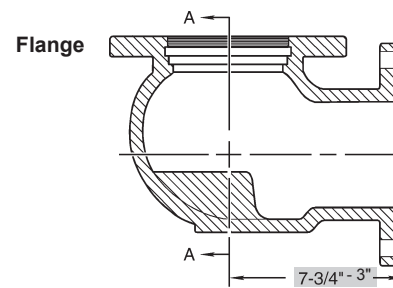
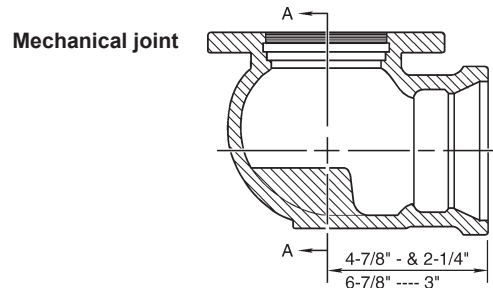
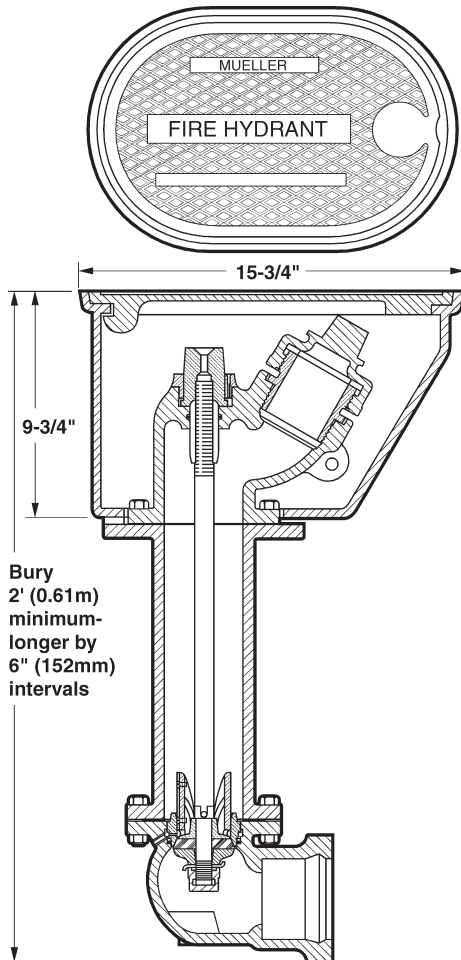
**A-317**

**A-317 Nozzle lock installation tool** - Used to install nozzle locking device.

- **Catalog numbers -**  
**A-412** 2-1/8" main valve opening one way (one 2-1/2" hose nozzle) non-locking lid
- Meets all applicable parts of ANSI/AWWA C502 Standard
- Flush type dry barrel design
- Compression type main valve closes with pressure
- Cast iron flush box with non-locking lid
- Operating nut available in wide variety of shapes and sizes
- Field replaceable hose nozzles
- Hose nozzles have large radius, full flow openings for low friction loss
- Contoured shoe is designed for full flow
- Dual bronze drain valves provide effective barrel drainage
- 150 psig (1000 kPa/10 barg) maximum working pressure,  
300 psig (2100 kPa/21 barg) test pressure



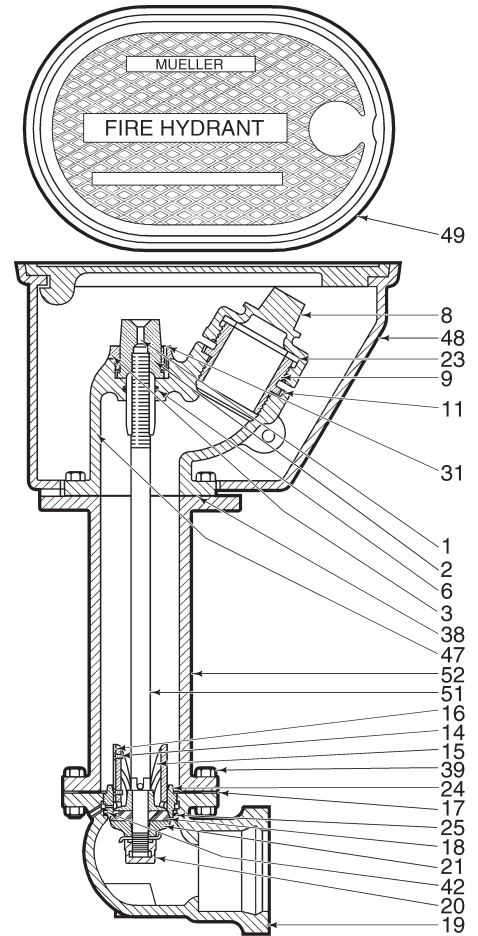
**Dimensions**



Shaded area indicates change Rev. 7-19

## Mueller 2-1/8" Flush Type Fire Hydrant Parts

Catalog Part Number	Description	Material	Material Standard
1	Oil Screw for Operating Nut	Brass	ASTM B36
2	Operating Nut	Bronze	ASTM B584
3	Hold Down Nut	Bronze	ASTM B62
6	Operating Nut O-ring	Rubber	ASTM D2000 - BUNA N
8	Hose Nozzle Cap	Cast Iron	ASTM A126 CL.B
9	Hose Nozzle	Bronze	ASTM B584
14	Drain Valve Screw	Stainless Steel	-
15	Upper Valve Plate*	Bronze	ASTM B584
16	Drain Valve Facing	Plastic	-
17	Shoe Gasket	Rubber	ASTM D2000 - SBR
18	Main Valve	Rubber	ASTM D2000
19	Shoe	Ductile Iron	ASTM A536
20	Valve Plate Nut	Ductile Iron	ASTM A536
21	Lower Valve Plate	Cast Iron	ASTM A126 CL.B
23	Hose Nozzle Gasket	Rubber	ASTM D2000 - Neoprene
24	Seat Ring	Bronze	ASTM B584
25	Seat Ring O-Ring	Rubber	ASTM D2000 Buna N
31	Oil Screw	Brass	ASTM B36
38	Barrel Flange Gasket	Rubber	ASTM D2000 - BUNA N
39	Shoe Bolt and Nut	Steel	ASTM A307 Plated
42	O-ring	Rubber	ASTM D2000 - BUNA N
44	Valve Nut Washer (not shown)	Stainless Steel	ASTM A276
45	Valve Nut Seal -not shown	Rubber	ASTM D2000 - BUNA N
46	Nozzle Lock	Stainless Steel	ASTM A276
47	Upper Barrel	Cast Iron	ASTM A126 CL.B
48	Flush Box	Cast Iron	ASTM A126 CL.B
49	Flush Box Lid (non-locking)	Cast Iron	ASTM A126 CL.B
50	Cap Screw	Steel	SAE J429
51	Stem	Steel	ASTM A576 GR.B
52	Lower Barrel	Cast Iron	ASTM A126 CL.B



\* Includes items #14 and #16. For pre-1986 models

\*\* on pre1986 models; 1986 models and newer use numbers 43, 44, and 45



**A-313**

**A-313 Operating wrench** - operates nozzle caps, pin and lug type hose couplings, hydrant operating nut and hold down nut.



**A-344**

**A-344 Seat wrench** - Adjustable, used to remove main valve and seat ring from ground line level.



**A-316**

**A-316 Nozzle wrench** - Used to remove and install threaded in hose and pumper nozzles.



**A-317**

**A-317 Nozzle lock installation tool** - Used to install nozzle locking device.

**When ordering Fire Hydrants, specify the following:**

**1. Quantity**

If more than one size, quantity of each.

**2. Size of main valve opening**

**3. Catalog number of Fire Hydrant**

**4. Nozzle arrangement**

The catalog number indicates the normal arrangements of hose and pumper nozzles. If a different arrangement is desired, specify the size and number of hose and pumper nozzles required.

**5. Depth of trench or bury**

Distance from ground line to bottom of connecting pipe. "Trench" and "ditch" are the same as "bury". "Cover" is the distance from the ground to the top of the connecting pipe.

**6. Size of inlet connection**

**7. Type of inlet connection**

**8. Size and shape of operating nut**

National Standard is 1-1/2" pentagon, measured from point to opposite flat. Square and hexagon or other sizes of pentagon can also be furnished. Size is determined by measuring from flat to opposite flat on square and hexagon, and from point to opposite flat on pentagon. Measurements must be taken at base of nut.

**9. Direction of opening**

Open left (counter-clockwise) or open right (clockwise).

**10. Hose nozzle threading**

Send a sample of the male coupling on hydrant nozzle to show threads desired, **EXCEPT** in the following cases **(a)** if using National Standard, specify accordingly **(b)** if we have previously furnished hydrants to the same location and there is no change (complete records are kept on file in our Engineering Department for reference).

**11. Pumper nozzle threading**

Same instructions as 10 above.

**12. Color**

Unless otherwise specified, the hydrant will be enameled above ground with fire hydrant red. When so ordered, we will enamel any color (or colors) specified to match your existing standards.

**When ordering parts, specify the following:**

**1. Year date shown on hydrant barrel**

2. Part number and name

3. Size and catalog number of hydrant

4. Direction of opening

5. Depth of bury

6. Bonnet markings

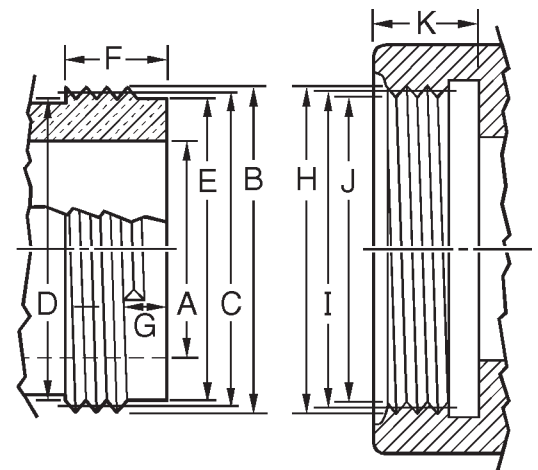
7. Type of inlet connection

8. Nozzle specifications (see steps 10 and 11 above)

Contact your Mueller Distributor or Mueller Customer Service Center for repair parts for discontinued Mueller Fire Hydrants.

**National Standard hose coupling thread specifications**

A. Nominal inside diameter of nozzle		2-1/2"	3"	3-1/2"	4"	4-1/2"
Number of threads per inch		7-1/2	6	6	4	4
B. Major diameter nozzle thread	Max.	3.0686	3.6239	4.2439	5.0109	5.7609
	Min.	3.0366	3.5879	4.3079	4.9609	5.7109
C. Pitch diameter nozzle thread	Max.	2.9820	3.5156	4.1356	4.8485	5.5985
	Min.	2.9660	3.4976	4.1176	4.8235	5.5735
D. Minor diameter nozzle thread	Max.	2.8954	3.4073	4.0273	4.6861	5.4361
E. Diameter pilot nozzle		2.850	3.354	3.973	4.610	5.357
F. Length of thread-nozzle*		1"	1-1/8"	1-1/8"	1-1/4"	1-1/4"
G. Face to start of second turn		1/4"	5/16"	5/16"	7/16"	7/16"
H. Major diameter coupling thread	Min.	3.0836	3.6389	4.2639	5.0359	5.7859
I. Pitch diameter coupling thread	Max.	3.0130	3.5486	4.1736	4.8985	5.6485
	Min.	2.9970	3.5306	4.1556	4.8735	5.6235
J. Minor diameter coupling thread	Max.	2.9424	3.4583	4.0833	4.7611	5.5111
	Min.	2.9104	3.4223	4.0473	4.7111	5.4611
K. Depth of coupling		15/16"	1-1/16"	1-1/16"	1-3/16"	1-3/16"



\* Manufacturers standard

NOTE: All dimensions are in inches and all dimensional data and tolerances are in accord with ANSI B26.



Rev. 8-19 Shaded area indicates changes

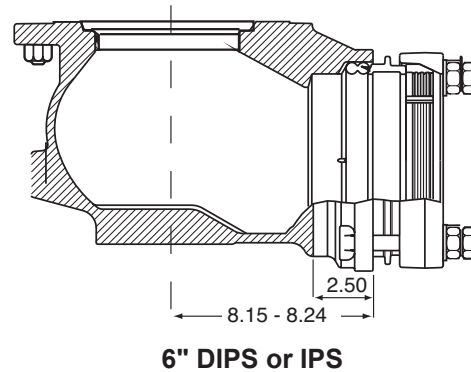
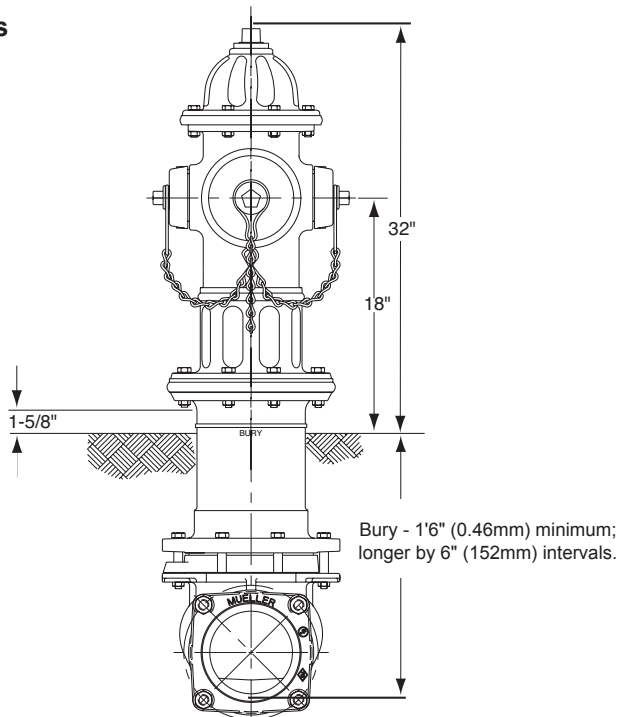
### Super Centurion FireHydrants

Model	Main Valve		Nozzles		Listings	
	4-1/2"	5-1/4"	Pumper	Hose	UL	FM
A403		•	1	2	•	•
A421	•		1	2	•	•
A423		•	1	2	•	•
A424	•		1	0		•
A425		•	2	0	•	
A433	•	•	0	2	•	•
A435		•	0	2	•	•
A454		•	0	3	•	•
A455		•	0	4	•	•
A458		•	1	3	•	•
A459		•	2	2	•	
A461	•		1	2	•	•
A473		•	1	2	•	•
A477		•	1	0		



- 10 year limited warranty on material and workmanship
- Meets all applicable parts of ANSI/AWWA C502 Standard
- Post type dry barrel design
- Dry top design with O-ring sealed oil reservoir
- Traffic feature with stainless steel stem coupling
- Encapsulated, reversible, compression-type main valve closes with pressure for positive seal; it is made of rubber and is conveniently reversible providing a spare for long service life
- Operating nut available in wide variety of shapes and sizes – open left or right
- Field replaceable hose and pumper nozzles
- Hose and pumper nozzles have large radius, full flow openings for low friction loss
- Contoured shoe is designed for full flow
- Dual bronze drain valves provide effective barrel drainage
- 250 psig (1725 kPa/17 barg) maximum working pressure, 500 psig (3450 kPa/35 barg) static test pressure for 3-way hydrants

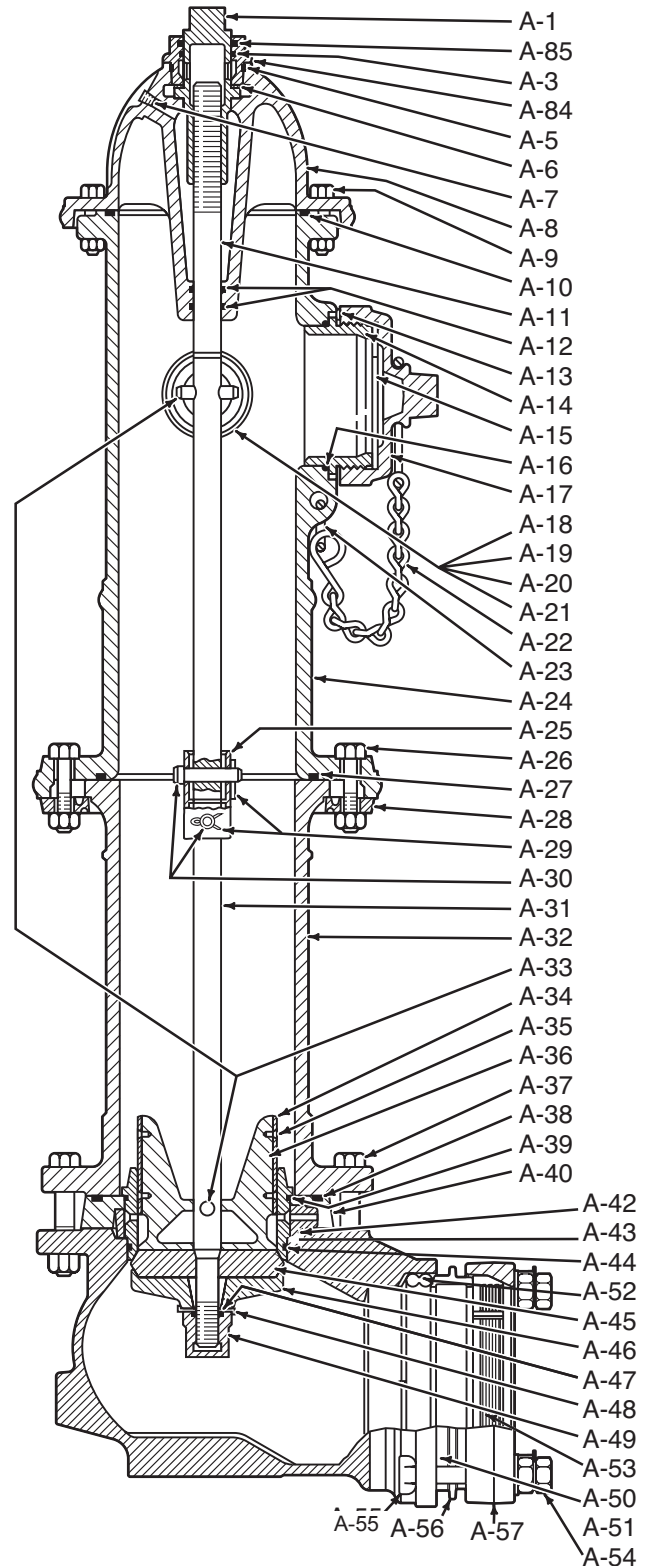
### Dimensions



## Mueller Super Centurion Fire Hydrant Parts

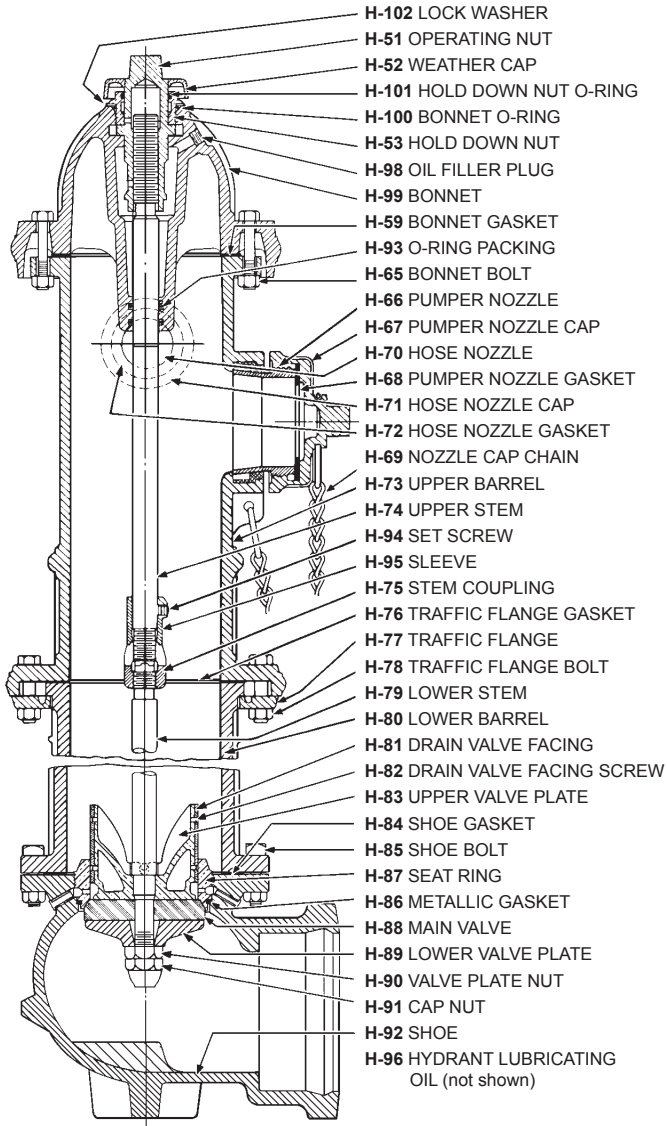
Catalog Part Number	Description	Material	Material Standard
A-1	Operating Nut	Bronze	ASTM B62
A-3	Hold Down Nut O-ring	Rubber	ASTM D2000 - BUNA N
A-5	Bonnet O-ring	Rubber	ASTM D2000 - BUNA N
A-6	Anti-friction Washer	Acetal	-
A-7	Oil Plug	Brass	ASTM B16
A-8	Bonnet	Cast Iron	ASTM A126 CL.B
A-9	Bonnet Bolt and Nut	Steel	SAE J429
A-10	Bonnet O-ring	Rubber	ASTM D2000 - BUNA N
A-11	Upper Stem	Steel	ASTM A576 1144T
A-12	Stem O-ring	Rubber	ASTM D2000 - BUNA N
A-13	Nozzle Lock	Stainless Steel	ASTM A276
A-14	Pumper Nozzle	Bronze	ASTM B584
A-15	Pumper Nozzle Gasket	Rubber	ASTM D2000 - Neoprene
A-16	Pumper Nozzle O-ring	Rubber	ASTM D2000 - BUNA N
A-17	Pumper Nozzle Cap	Cast Iron	ASTM A126 CL.B
A-18	Hose Nozzle	Bronze	ASTM B584
A-19	Hose Nozzle Gasket	Rubber	ASTM D2000 - Neoprene
A-20	Hose Nozzle O-ring	Rubber	ASTM D2000 - BUNA N
A-21	Hose Nozzle Cap	Cast Iron	ASTM A126 CL.B
A-22	Cap Chain	Steel	Plated
A-23	Chain Ring	Steel	Plated
A-24	Upper Barrel Less Nozzles	Cast Iron	ASTM A126 CL.B
A-25	Stem Coupling	Stainless Steel	ASTM A890
A-26	Traffic Flange Bolt and Nut	Steel*	SAE J429
A-27	Traffic Flange O-ring	Rubber	ASTM D2000 - BUNA N
A-28	Traffic Flange	Cast Iron	ASTM A126 CL.B
A-29	Reusable Clip	Stainless Steel	ASTM A276
A-30	Clevis Pin	Stainless Steel	ASTM A276
A-31	Lower Stem	Steel	ASTM A576 1144T
A-32	Lower Barrel	Cast Iron	ASTM A126 CL.B
A-33	Stem Pin	Stainless Steel	ASTM A582
A-34	Drain Valve Facing	Plastic	-
A-35	Drain Valve Screw	Stainless Steel	ASTMA276
A-36	Upper Valve Plate (includes A-34 and A-35)	Bronze	ASTM B584
A-37	Shoe Bolt and Nut	Steel*	SAE J429
A-38	Drain Ring Housing O-ring	Rubber	ASTM D2000 Buna N
A-39	Seat Ring Top O-ring	Rubber	ASTM D2000 - BUNA N
A-40	Drain Ring Housing	Cast Iron	ASTM A126 CL.B
A-41	Drain Ring Housing Bolt and Nut - not shown	Steel	SAE J429 Grade 2
A-42	Drain Ring	Bronze	ASTM B584
A-43	Seat Ring	Bronze	ASTM B584
A-44	Seat Ring Bottom O-ring	Rubber	ASTM D2000 - BUNA N
A-45	Reversible Encapsulated Main Valve	Rubber	ASTM D2000 reinforced Cast Iron ASTM A126 CL.B
A-46	Lower Valve Plate	Cast Iron	ASTM A126 CL.B
A-47	Cap Nut Seal	Rubber	ASTM D2000 - Natural
A-48	Lock Washer	Stainless Steel	ASTM A276
A-49	Lower Valve Plate Nut	Cast Iron	ASTM A126 CL.B
A-50	Shoe	Ductile Iron	ASTMA536
A-84	Hold Down Nut	Bronze	ASTM B62
A-85	Weather Seal	Rubber	ASTM D2000 - EPDM
A-86	Bury Tag	Stainless Steel	300 Series
A-52	Double O-ring	Rubber	ASTM D2000 - BUNA N
A-53	Gripper Ring	Ductile Iron	ASTMA536
A-54	Breakaway Nut with Washer	Steel	-
A-55	T-head Bolt	Steel	-
A-56	Immediate Ring	Ductile Iron	ASTMA536
A-57	End-ring	Ductile Iron	ASTMA536

\* Stainless steel 316 available as an option

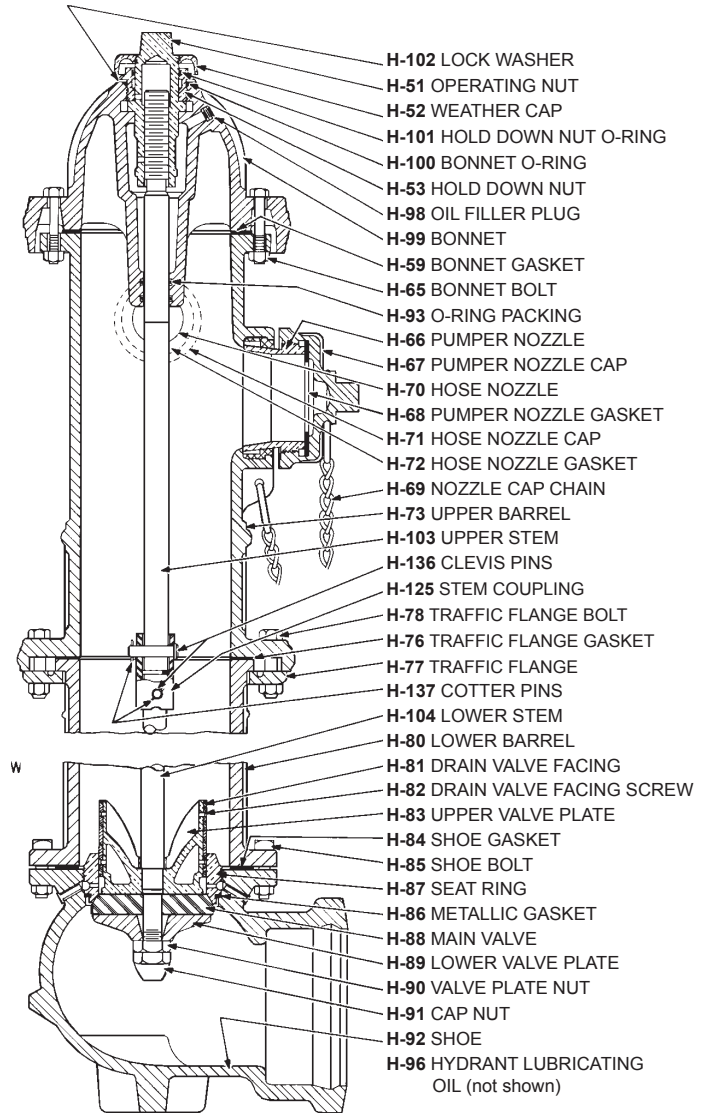


Shaded area indicates change Rev. 9-17

## HYDRANT WITH BRASS STEM COUPLING



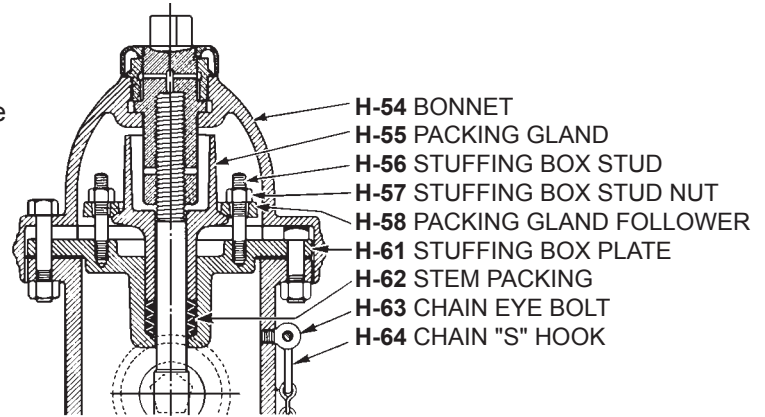
## HYDRANT WITH STEEL STEM COUPLING



**1934 THROUGH 1947**

Bonnet section of hydrant with conventional packing and without oil filler plug in bonnet. All other parts same as on previous page.

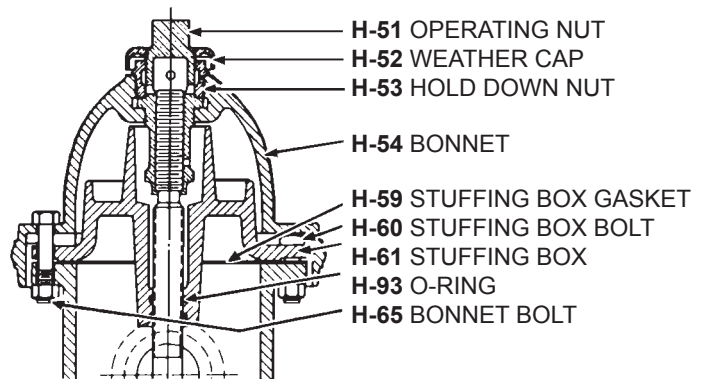
Appearance same as 1948 through 1953 with filler plug. If nozzle chains are attached to eyebolt, bonnet is this style. Packing is conventional.



**1948 THROUGH 1953**

Bonnet section with O-ring seals and without oil filler plug in bonnet. All other parts same as drawing on previous page. Year date is marked on side of barrel.

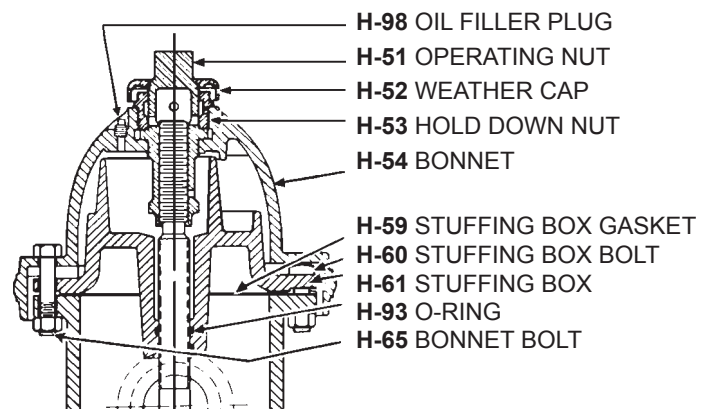
No oil filler plug. Nozzle chains are attached below each nozzle. O-rings now used in place of conventional packing.



**1954 THROUGH 1961**

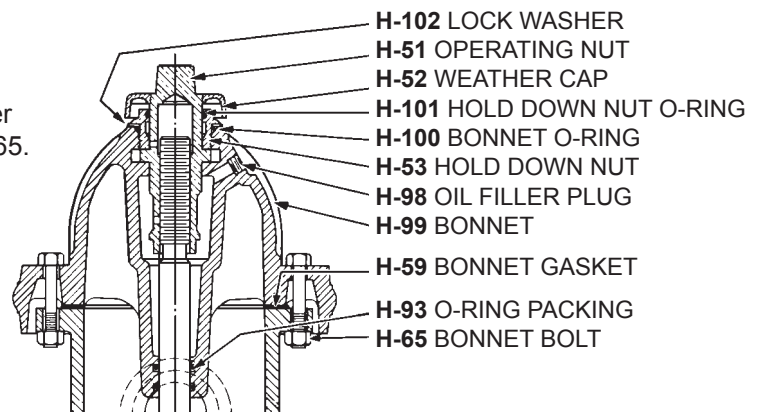
Bonnet section with O-ring seals and oil filler plug in bonnet. All other parts same as drawing on previous page. Year date is marked on side of barrel.

Oil reservoir changed in shape to allow addition of oil without disturbing bonnet. Oil filter plug in vertical position.

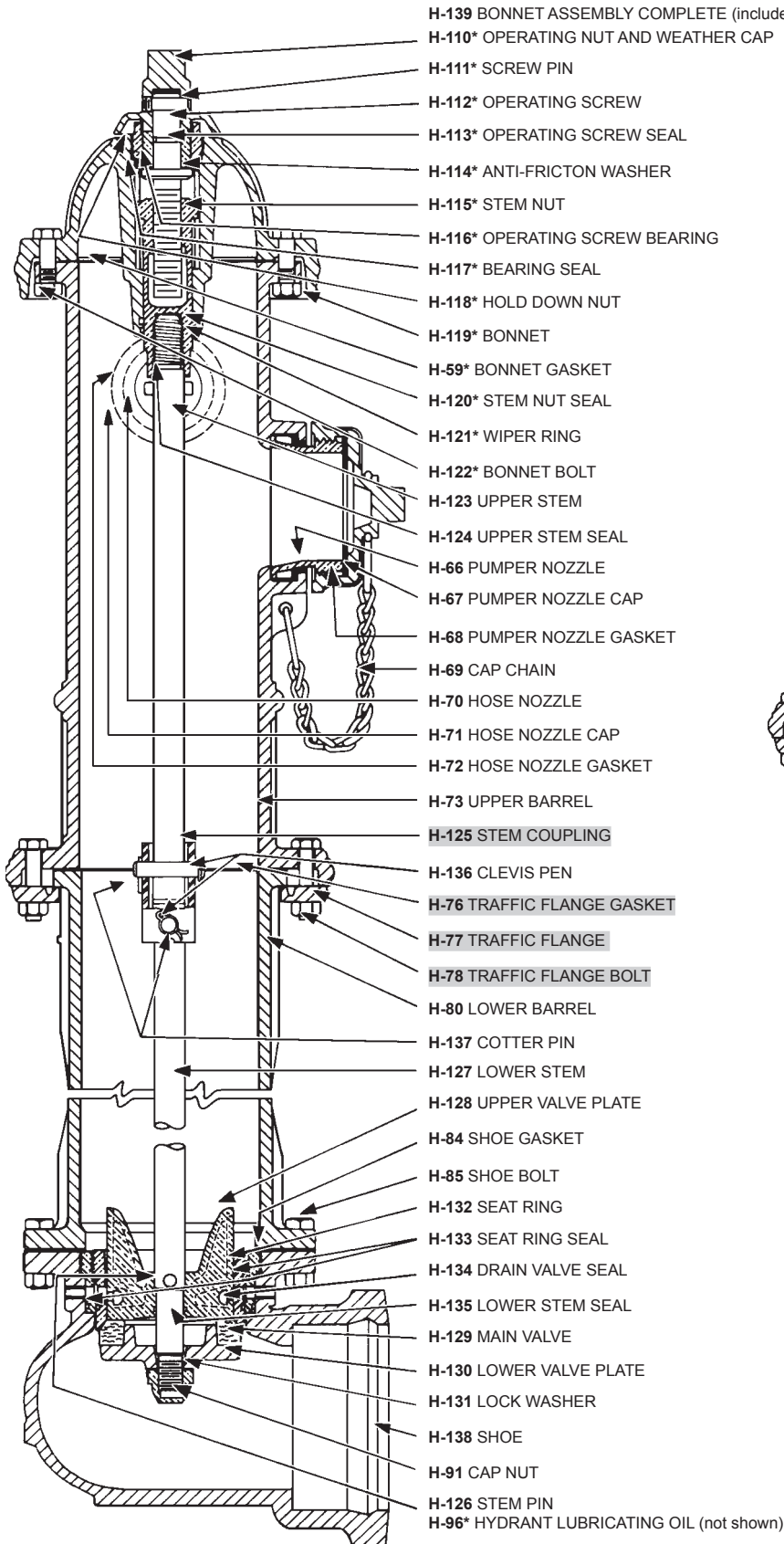


**HYDRANT WITH SEALED OIL  
RESERVOIR - 1962 STYLE**

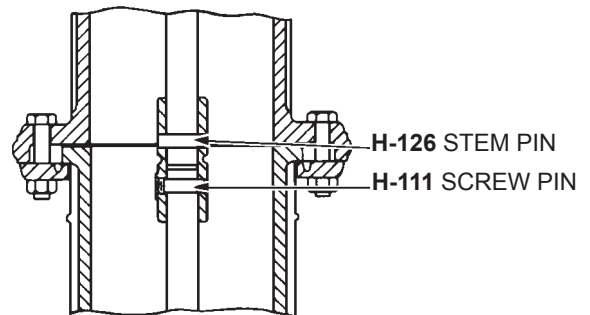
Hydrant bonnet is marked SR on top of flange. Oil filler plug is set on an angle. Lock washer was added in 1965. Year date is marked on side of barrel.



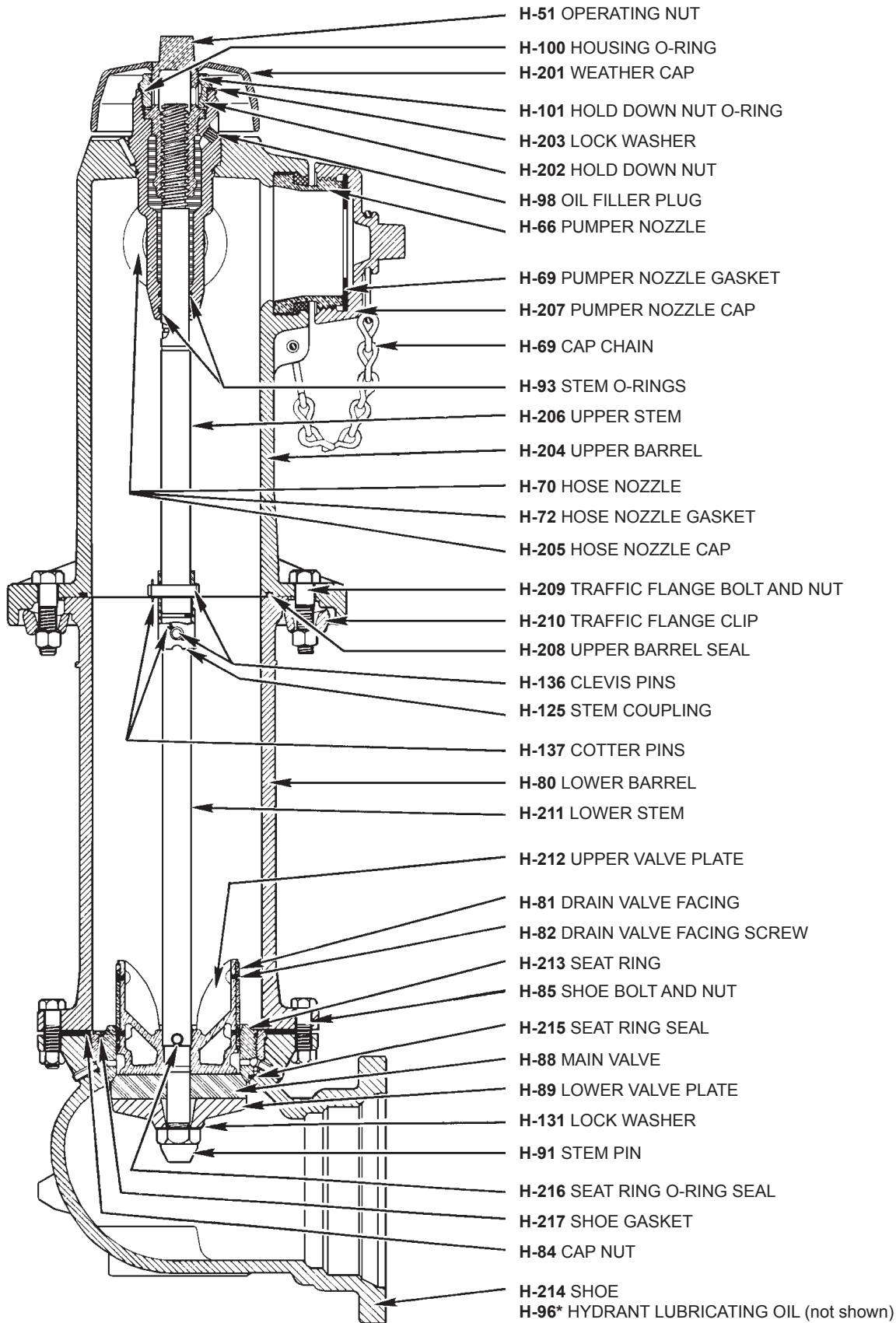
Shaded area indicates change Rev. 9-17



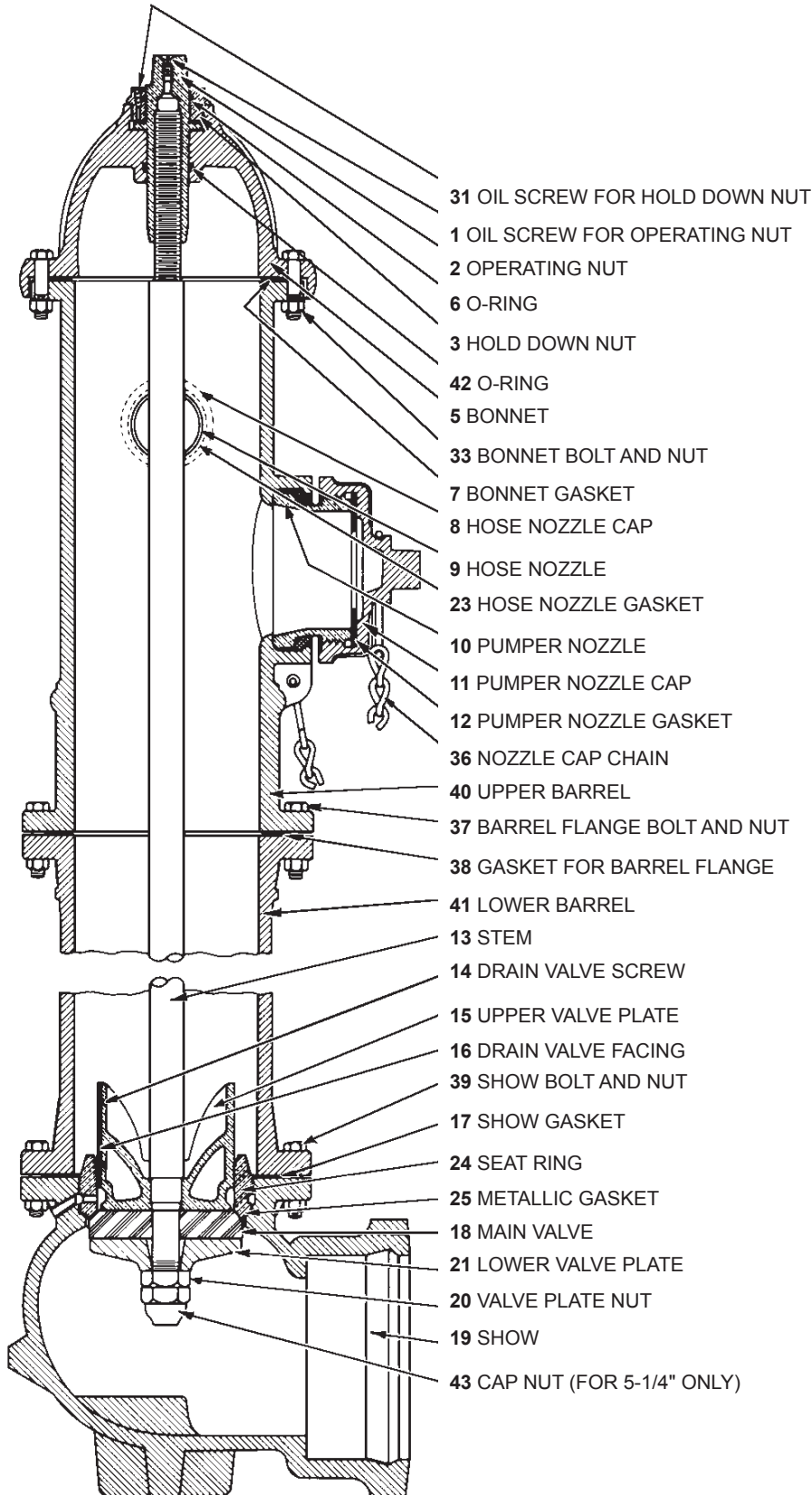
**HYDRANT WITH CAST IRON  
STEM COUPLING**  
(All other parts same as drawing at left)







Shaded area indicates change Rev. 9-09



Mueller HI-FLO Wet Barrel Fire Hydrant

Catalog Part Number	Description	Material	Material Standard
1	Pumper Nozzle Cap Gasket	Rubber	ASTM D2000
2	Pumper Nozzle O-ring	Rubber	ASTM D2000
3	Cotter Pin	Silicon Bronze	-
4	Anti-friction Washer	Celcon	-
5	Seat Washer	Rubber	ASTM D2000
6	O-ring	Rubber	ASTM D2000
7	Stem	Bronze	ASTM B584
8	Stuffing Box O-ring	Rubber	ASTM D2000
9	Stuffing Box	Bronze	ASTM B584
10	Barrel O-ring	Rubber	ASTM D2000
11	Hose Nozzle Cap Gasket	Rubber	ASTM D2000
12	Hose Nozzle O-ring	Rubber	ASTM D2000
13	Cotter Pin	Silicon Bronze	Silicon Bronze
14	Anti-friction Washer	Celcon	-
15	Seat Washer	Rubber	ASTM D2000
16	O-ring	Rubber	ASTM D2000
17	Stem	Bronze	ASTM B584
18	Stuffing Box O-ring	Rubber	ASTM D2000
19	Stuffing Box	Bronze	ASTM B584
20	Barrel O-ring	Rubber	ASTM D2000
21	Retaining Ring	Steel	-
-	Rivet (not shown)	Copper	-

