

AQUASPEC[®] FAUCETS

MODEL - Z87500 SERIES
WALL MOUNTED LABORATORY FAUCET



TECHNICAL INFORMATION

MAXIMUM PRESSURE - 125 PSI
MAXIMUM TEMPERATURE - 160°F
HANDLE NUT TORQUE - 15-20 FT - LBS.
CARTRIDGE STYLE - QUARTER TURN CERAMIC DISK

IMPORTANT THE WATER SUPPLY LINES MUST BE THOROUGHLY FLUSHED BEFORE INSTALLATION TO PREVENT FOREIGN MATTER AND DEBRIS FROM CLOGGING AND/OR DAMAGING INTERNAL COMPONENTS AND THEREBY PREVENTING THE FAUCET FROM FUNCTIONING PROPERLY

INSTALLATION INSTRUCTIONS

1. 1/2" IP NIPPLE SHOULD PROTRUDE 1/2"-7/8" FROM THE FINISHED WALL. PIPE SHOULD BE SECURED TO SUPPORT THE FAUCET.
2. PLACE HANDLE ITEM #6A ONTO CARTRIDGE STEM AND TIGHTEN USING SCREW ITEM #2B. PLACE INDEX ITEM #6C OVER SCREW.
3. ASSEMBLE SPOUT ITEM #2 ONTO BODY ITEM #3, USING HARDWARE ITEMS #2B , #2C, #2D AND #2E AND HAND TIGHTEN.
4. INSTALL AERATOR ITEM #1 ONTO SPOUT AND HAND TIGHTEN. IT MAY BE NECESSARY TO UNSCREW AND CLEAN AERATOR AT START-UP.
5. TURN WATER SUPPLY ON AND OPERATE FAUCET CHECKING FOR LEAKS.
6. IT MAY BE NECESSARY TO SHUT WATER OFF AND REMOVE THE CARTRIDGE TO CLEAN SUPPLY LINE. THE CARTRIDGE CAN BE REMOVED BY FIRST REMOVING THE HANDLE. COLOR INDEX ITEM #6C CAN BE REMOVED BY INSERTING A PIN INTO THE HOLE ON THE UNDERSIDE OF THE HANDLE. AFTER THE HANDLE HAS BEEN REMOVED, UNSCREW HANDLE NUT ITEM #5 AND REMOVE THE CARTRIDGE ITEM #4.
 - 6A. AFTER THE SUPPLY LINE IS CLEANED, REPLACE CARTRIDGE IN BODY AND REPLACE HANDLE NUT. PLACE HANDLE ON THE CARTRIDGE STEM.
 - 6B. REPLACE HANDLE SCREW ITEM #6B AND COLOR INDEX BUTTON ITEM #6C

ZURN INDUSTRIES, LLC ♦ COMMERCIAL BRASS OPERATION ♦ 2640 SOUTH WORK STREET ♦ FALCONER NY 14733
Phone: 1-800-997-3876 ♦ Fax: 1-919-775-3541 ♦ www.zurn.com

In Canada: ZURN INDUSTRIES LIMITED ♦ 3544 Nashua Drive ♦ Mississauga, Ontario L4V1L2 ♦ Phone: 905/405-8272 Fax: 905/405-1292

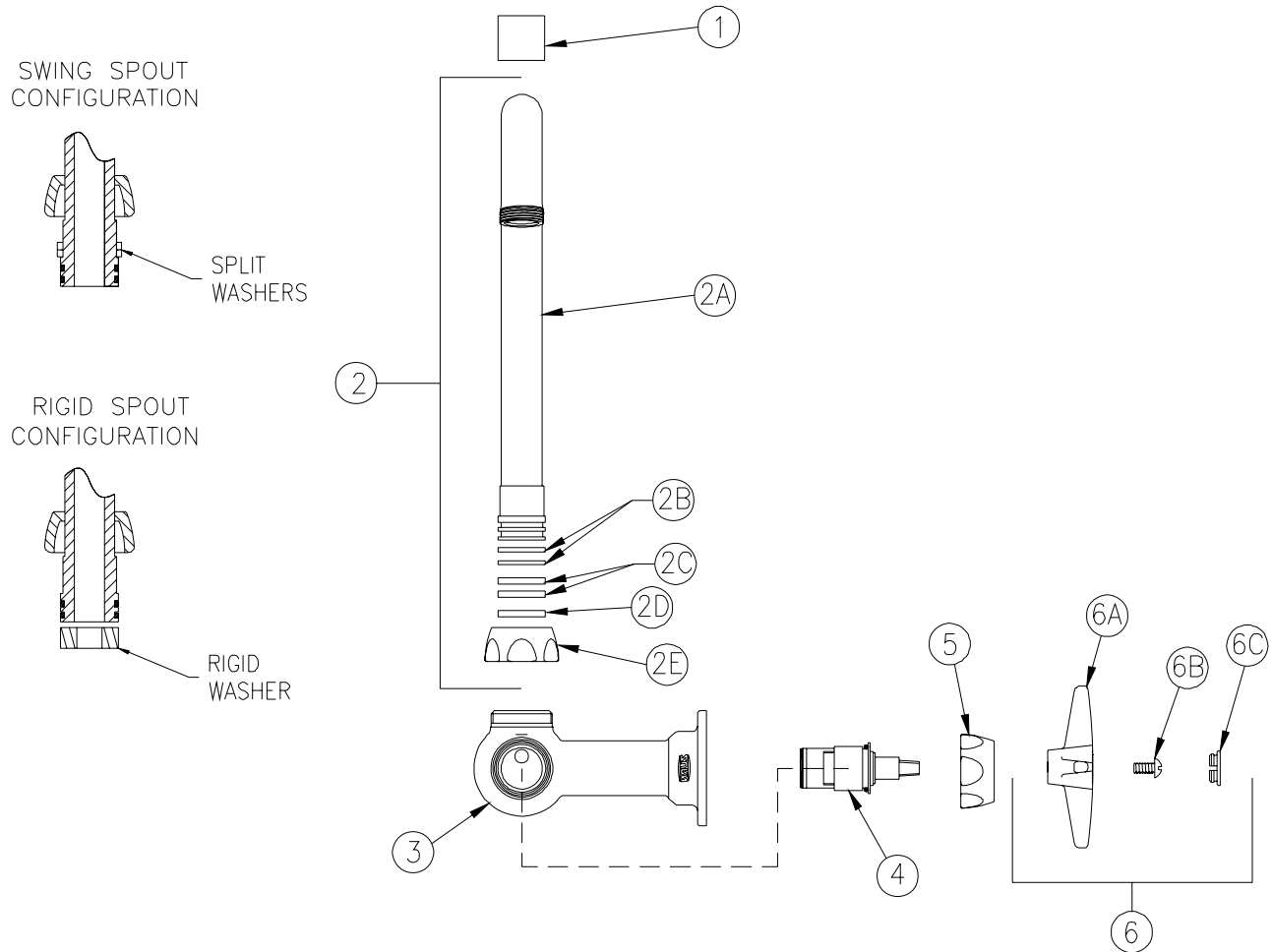
MAINTENANCE

- 1. YOUR ZURNAQUASPEC FAUCET HAS A HIGHLY POLISHED NICKEL CHROME PLATED FINISH. CLEAN WITH SOAP AND WATER OR A MILD CLEANER WHICH IS SAFE FOR CHROME PLATING. DO NOT USE ACIDS OR TOILET BOWL CLEANER AS THEY WILL DAMAGE THE FINISH.
- 2. AQUASPEC FAUCETS CONTAIN CERAMIC DISK CARTRIDGES WHICH REQUIRE NO MAINTENANCE. THE CARTRIDGE CAN BE REMOVED BY SHUTTING THE WATER OFF, LOOSENING THE HANDLE NUTS AND PULLING UP ON THE CARTRIDGE.

REPLACEMENT PARTS:

COLD WATER CARTRIDGE	59517001
HOT WATER CARTRIDGE	59517002
INDEX BUTTONS	G60548

Z875B2 PICTURED



Z875B2 PARTS LIST

Item	Part Number	Description	Qty.
1	G63504	3/4"-27 Female Aerator - 2.2 GPM [8.3 L]	1
2	G61064	5-3/8" Centerline Gooseneck Spout Assembly	1
2A	60250002	5-3/8" Centerline Gooseneck 'B' Spout	1
2B	58155018	O-Ring	2
2C	59666001	Plastic Split Washer (swing)	2
2D	59436001	Spacer Washer (rigid)	1
2E	59435001	Spout Nut	1
3	92426001	Body	1
4	9517002	Short Hot Cartridge	1
5	59523001	Handle Nut	1
6	G61072	Single Metal Four Arm Handle	1
6A	59518001	Vandal-Resistant Metal Four Arm Handle	1
6B	62464001	10-32 Screw	1
6C	G60548	Hot/Cold/Tempered Color-Coded Indexes	1
	59454001	Hot Color-Coded Index	1
	59454002	Cold Color-Coded Index	1
	59454003	Tempered Color-Coded Index	1