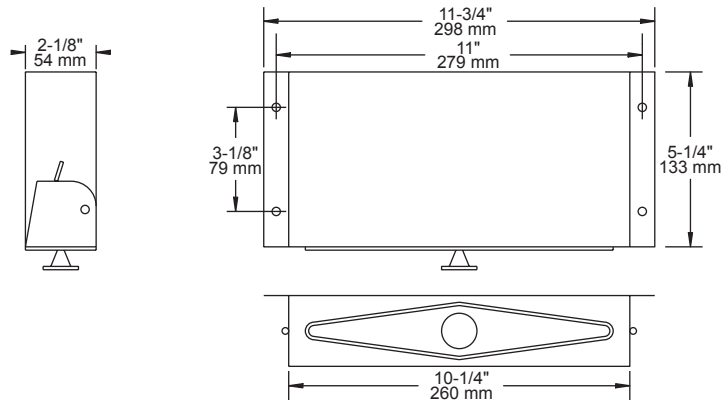


TECHNICAL DATA

Recessed Fixtures

RECESSED TISSUE BOX FOR VANITY 919



MATERIALS: Recessed box and door are made of 23 gauge galvanized steel. Door springs are plated steel. Door knob is plastic.

INSTALLATION: Vanity top or apron must be cut with a suitable opening to allow tissue withdrawal. Install recessed box under vanity or behind apron with 4 - #8 x 3/4" round head zinc plated steel screws provided. Spring loaded door with knob at bottom of unit allows easy loading and unloading of tissue boxes.

SPECIFICATION: Recessed tissue box for vanity shall be model _____
(fill in model number) by Liberty Hardware Manufacturing Corporation.