



Smith-Blair
a xylem brand

Installation Instructions

913 & 914

Flanged Coupling Adapter (FCA)

STEP 1

Clean outside surface of pipe approximately 12 inches from the end of the pipe. Be sure the gasket bearing surface is free of blemishes that may impair seal.

STEP 2

Lubricate the pipe surface and gasket(s) using a soap and water solution (anti-freeze may be required). All lubricant solutions should meet the requirements of the water and pipe supplier.

STEP 3

Place follower flange, gasket, and adapter body (in that order) on spigot end of pipe.

STEP 4

Bolt adapter body to companion flange.

STEP 5

Slide gasket into position against adapter body and slide follower flange into place against the gasket.

STEP 6

Install follower flange bolts to initial torque of 50 ft-lb. Then torque bolts to final torque of 70 ft-lb for 5/8" bolts and 90 ft-lb for 3/4" bolts. Be sure all bolts are torqued to the recommended values with a calibrated torque wrench.

STEP 7

Recheck all torque values after fluid pressure is applied. Torque if required.

Continue with Steps 8-12 ONLY if the FCA contains anchor studs.

STEP 8

Follow standard installation procedure for 913/914's making sure all bolts are properly torqued. Pipe must be inserted a minimum of 1" past the anchor stud boss. (Pipe cannot be moved after anchor studs are installed.)

STEP 9

For 5/8" anchor studs, thread standard 1/2" NPT pipe nipple into the anchor stud boss. For 1" anchor studs, use 1" NPT pipe nipple.

STEP 10

Using the pipe nipple as a drill guide, drill a 41/64" (for 5/8" anchor studs) or 1-3/64" (for 1" anchor studs) diameter hole completely through the pipe.

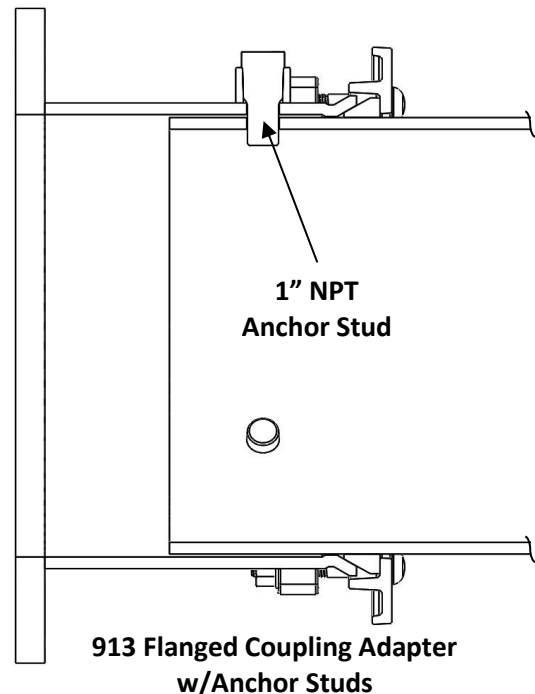
STEP 11

Remove pipe nipple and install the anchor stud using a good quality pipe thread compound that is both a lubricant and sealant (also called pipe dope, paste, etc.). Do not use tape type products! Use a thread compound that meets the requirements of the water supplier.

STEP 12

Repeat the above procedure for each anchor stud.

Recommended End Gap		
Adapter Body Length	Gap Maximum	Gap Minimum
7" to 9"	3"	1/2"
10" to 15"	5"	1/2"
Maximum pipe deflection 2° with 3" pipe engagement		





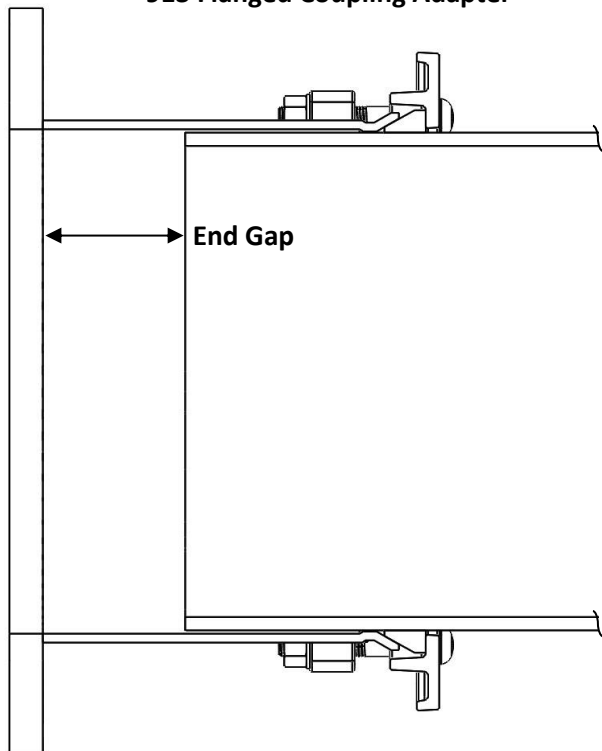
Smith-Blair
a xylem brand

Installation Instructions

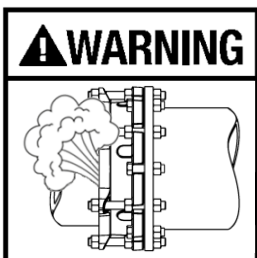
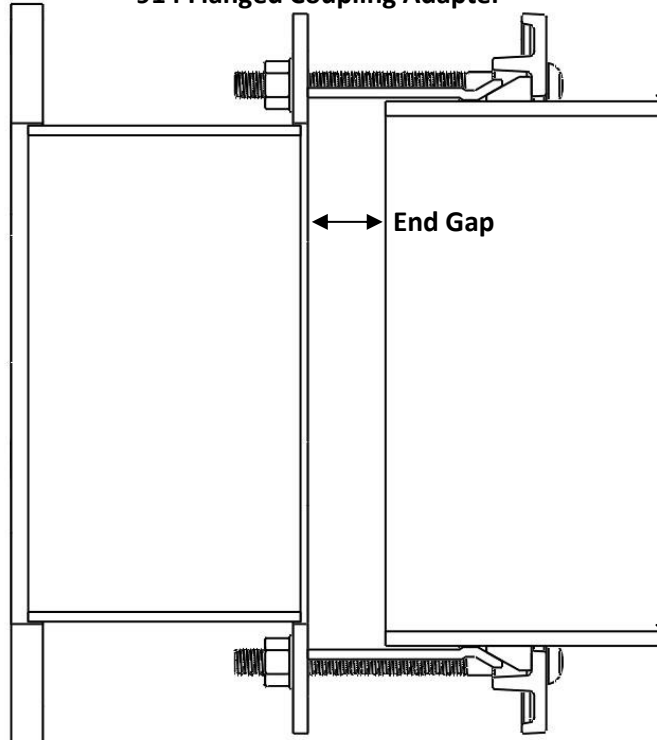
913 & 914

Flanged Coupling Adapter (FCA)

913 Flanged Coupling Adapter



914 Flanged Coupling Adapter



THIS PRODUCT DOES NOT RESTRAIN PIPE MOVEMENT.
Anchor studs are required to prevent pipe pullout. Failure to anchor or improper anchoring can result in dangerous pipe content escape, property damage, serious injury, and/or death. Read the product installation instructions prior to installing this product.

WARRANTY

Smith-Blair, Inc. warrants its products to be free of defects in materials and workmanship for a period of one (1) year from the date of shipment by Smith-Blair, Inc. (the "Warranty Period"). Dated proof of purchase, such as a bill of sale, is required to establish warranty eligibility. If a product fails to perform due to a defect in materials or workmanship during the Warranty Period, Smith-Blair, Inc. will repair or, at Smith Blair, Inc.'s option, replace the product with the same or comparable item. In the event that the product cannot be repaired and a suitable replacement item is not available, Smith-Blair, Inc. will refund the original purchase price shown on the proof of purchase. In all cases, the customer is responsible for returning the allegedly defective product to the factory or warehouse designated by Smith-Blair, Inc.

THIS LIMITED WARRANTY IS EXCLUSIVE AND IS IN LIEU OF ANY EXPRESS OR IMPLIED WARRANTY OF MERCHANTABILITY, FITNESS FOR A PARTICULAR PURPOSE, OR OTHER WARRANTY OF QUALITY, OR THOSE ARISING FROM A COURSE OF DEALING, CUSTOM, OR USAGE OF TRADE. THE REMEDIES PROVIDED IN THIS LIMITED WARRANTY STATEMENT ARE THE CUSTOMER'S SOLE AND EXCLUSIVE REMEDIES. IN NO EVENT SHALL SMITH-BLAIR, INC. BE LIABLE FOR DIRECT, INDIRECT, SPECIAL, INCIDENTAL, OR CONSEQUENTIAL DAMAGES, WHETHER BASED ON CONTRACT, TORT, OR ANY OTHER LEGAL THEORY, AND WHETHER ADVISED OF THE POSSIBILITY OF SUCH DAMAGES.

04/18

CORROSION & PRODUCT SELECTION NOTICE

Metal products are subject to corrosion, particularly when used outdoors and/or underground. A large number of factors and local conditions affect the rate of corrosion. Consult a local corrosion expert to determine the life expectancy of this product when used with your pipeline content, soil, and environment. Also, consult your system designer to determine the suitability of this product in your piping system. Failure to determine the suitability of this product in your application, soil, and/or environment can result in premature product failure. Smith-Blair will provide additional information about this product's material specifications at your request. You may also obtain product information at www.smith-blair.com.

04/18