

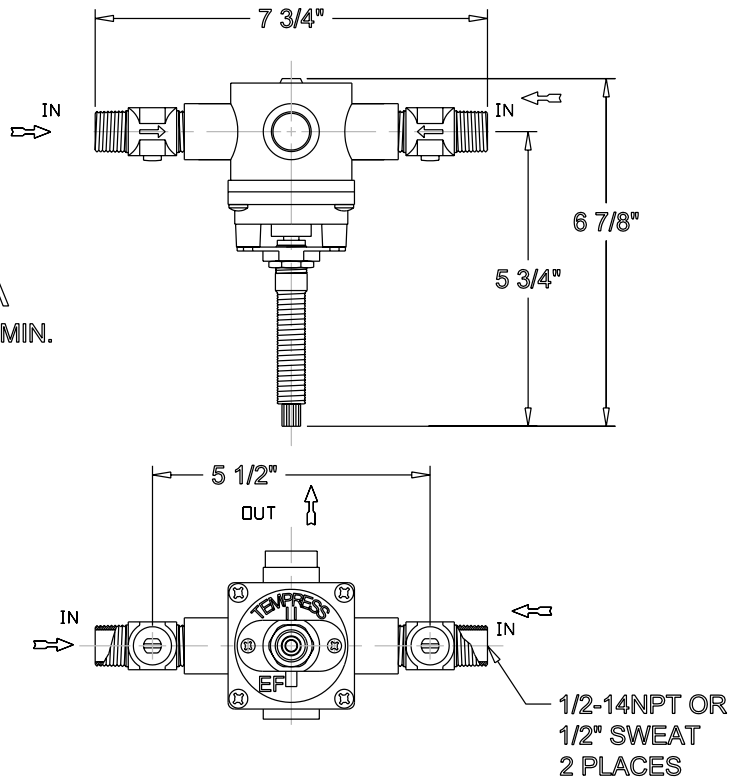
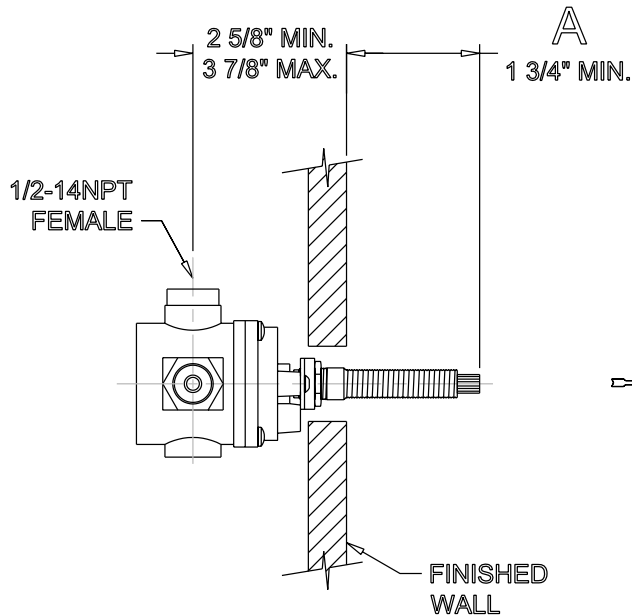


---

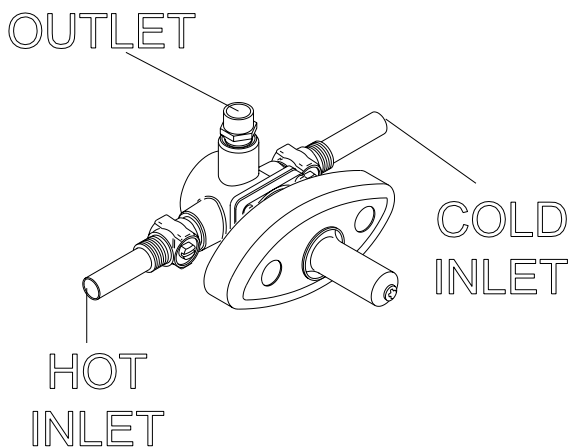
**Installation Instructions: DFPHY  
Valve & Trim Application:  
Pressure Balance Shower**

**#LIT-INS-DPBS-904**

# DFPHY VALVE SPECIFICATIONS



## Step #R-1

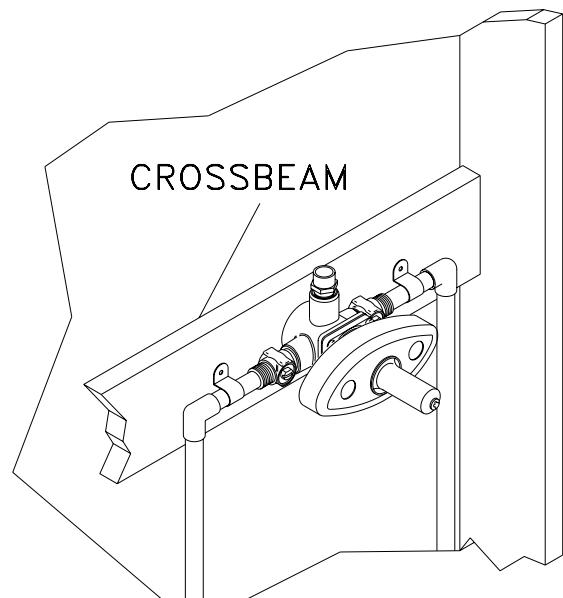


Install Valve as shown above while referencing rough in specifications on the top of this page.

### NOTE

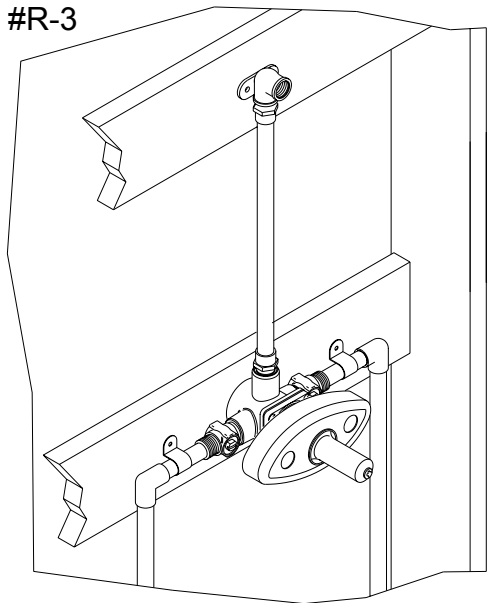
Do not apply heat directly on valves. Excessive heat will damage rubber and plastic seals and will void the warranty.

## Step #R-2



Refer to page 5 of this booklet with the trim number to determine the proper rough in for the valves. If the trim number is not known, refer to the specifications on the top of this page. Install crossbeam to secure valve. Connect valve inlets to hot and cold water supplies.

### Step #R-3



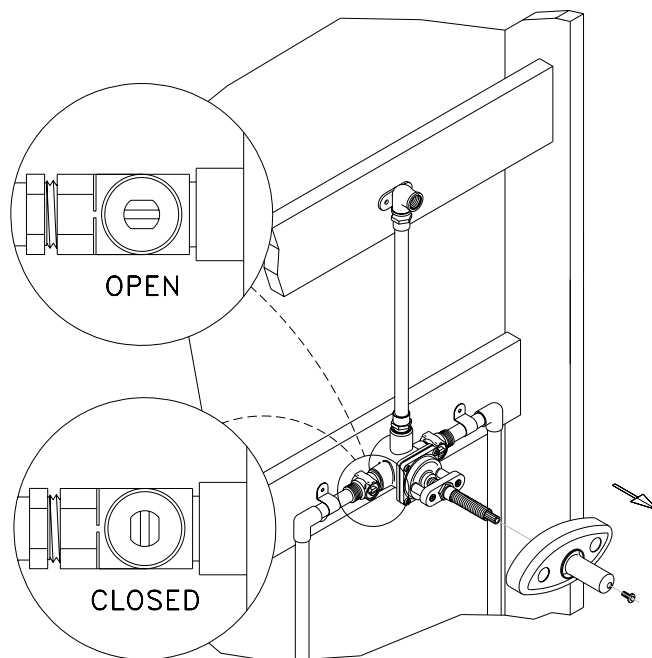
Determine the location of the shower head to be used in this shower system.

#### **NOTE:**

Install crossbeams and secure brass elbow as required.

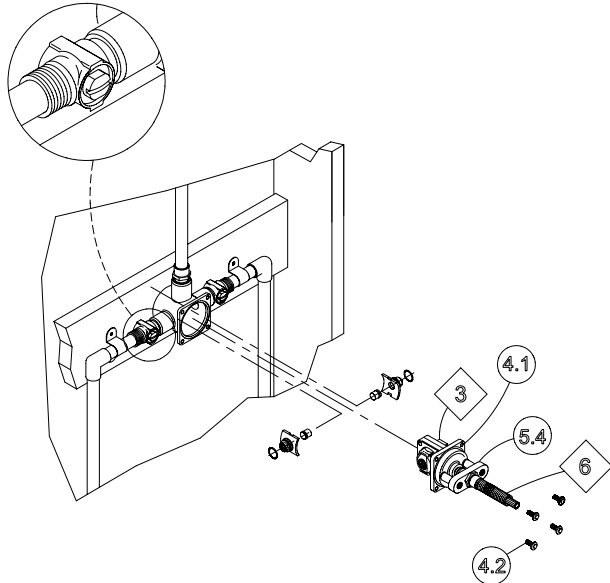
Standard installation is shown above for reference.

### Step #R-4



Remove mud cover (Do not discard).  
Close integral stops.  
Pressurize both hot and cold supplies.

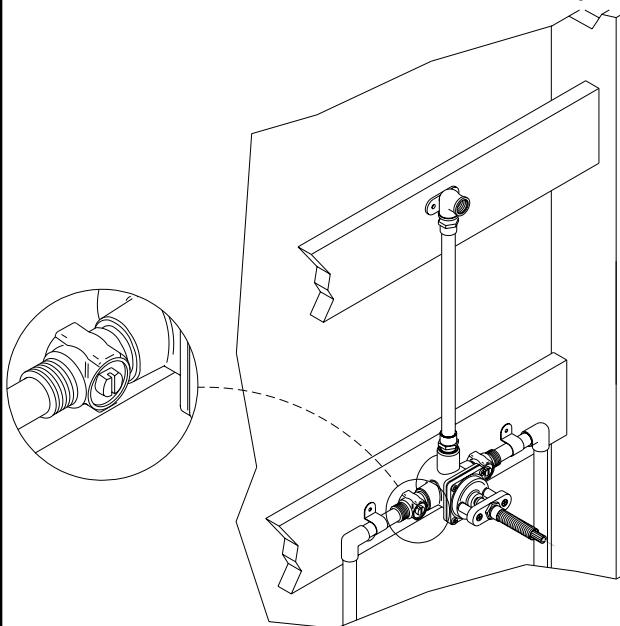
### Step #R-5



Remove valve cover screws (#4.2). Pull stem assembly (#6.0), valve cover (#4.1) and cartridge (#3.0) as one complete unit. It is very important that this entire assembly be returned in the same configuration for the valve to function properly. Open integral stops to flush supply lines.

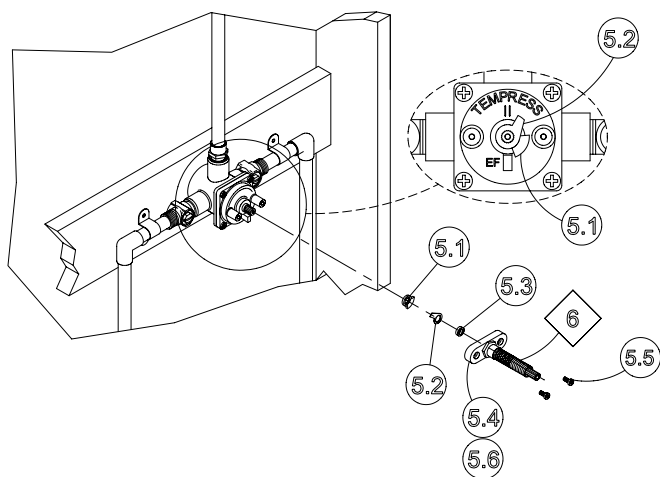
**Failure to complete this step will void the warranty.**

### Step #R-6



Close integral stop and reinstall cartridge, cover and stem assembly. **PRESSURE TEST THE VALVE.** Water pressure must be applied to both hot and cold inlets at the same time to pressure test this valve. Check all connections for leaks.

### Step #R-7

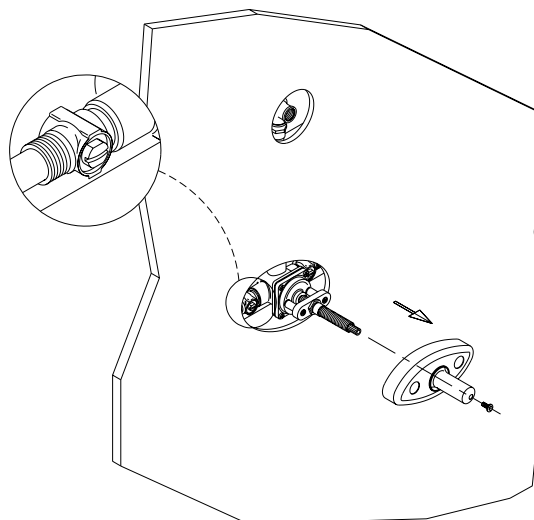


Should water drip from the outlet, remove stem assembly (#6.0) and mechanical stops and washer (#5.1, 5.2 & 5.3). Rotate cartridge stem clockwise until it stops. Reposition mechanical stop so that it is on the right side of the valve cover stop. Re-attach stem assembly. Close integral stops and reinstall tile guide and thread protectors. Wall is ready to be closed.

#### **NOTE**

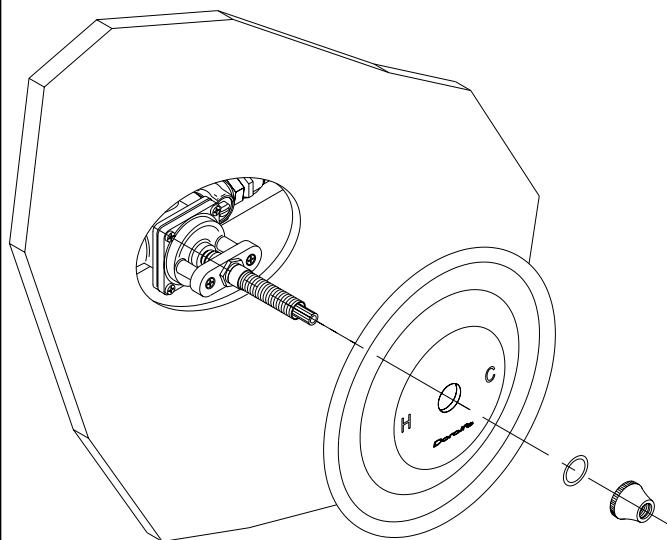
Allow adequate wall access to cartridges.

### Step #T-1



Remove mud cover when ready to install trim.

### Step #T-2

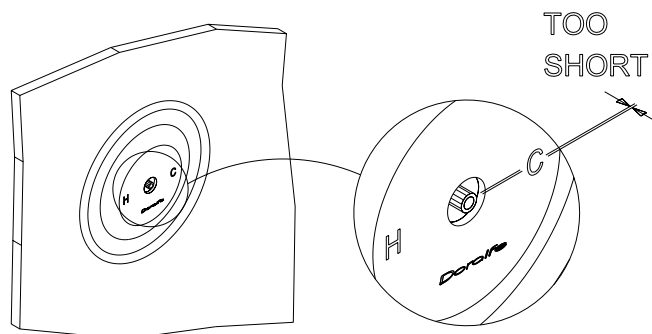


Position escutcheon plate so that the "H" and "C" are parallel to the floor and secure with escutcheon nut with o-ring. Tighten nut so that the plate cannot be rotated. If there are no threads for the nut to catch, see Step T-2a. If nut will not bottom out, see Step T-2b and T-2c.

#### **NOTE**

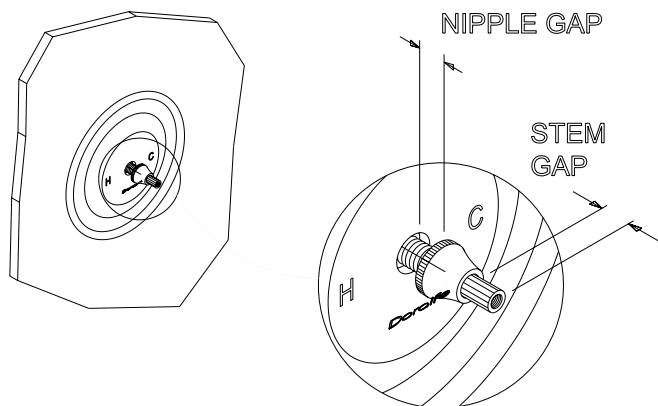
Trim parts will vary according to series.

### Step #T-2a



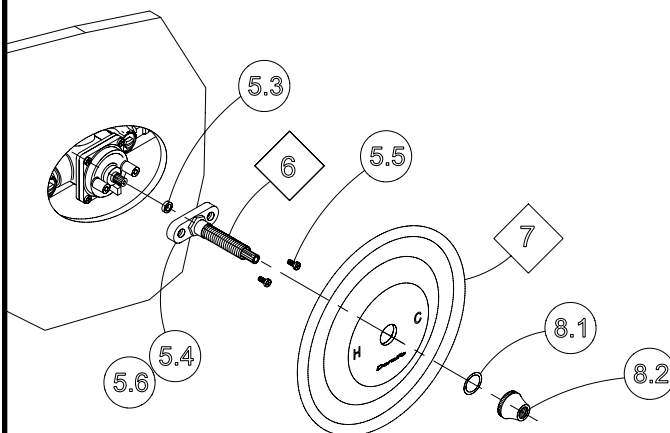
If the valve is installed too deep behind the wall, extension stems are available. Please contact your local distributor to order part number PB-EXT.

### Step #T-2b



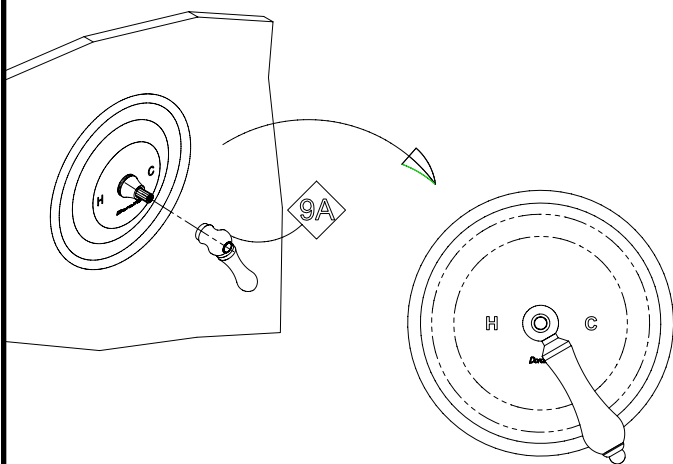
If the valve is installed too far out of the wall, the stem and nipple may be trimmed. To determine amount to be cut measure the gap between the escutcheon and the wall and/or the gap between the handle and escutcheon.

### Step #T-2c



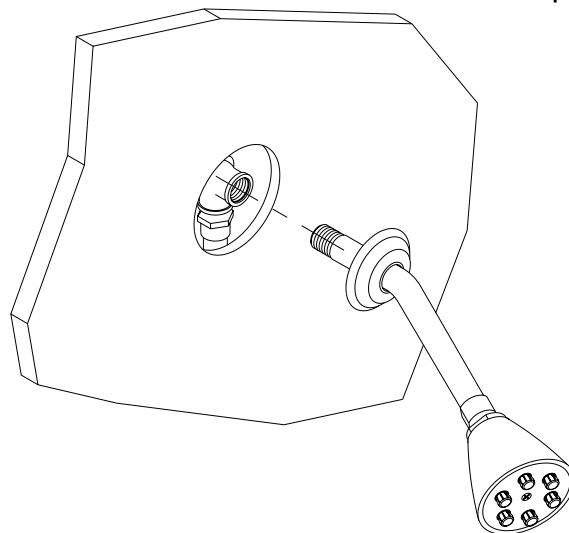
Remove secure nut (8.1 & 8.2), plate (7), stem (#6), stem assembly (#5.3, 5.4 & 5.6). Make appropriate cuts and reinstall as in step T-2.

### Step #T-3



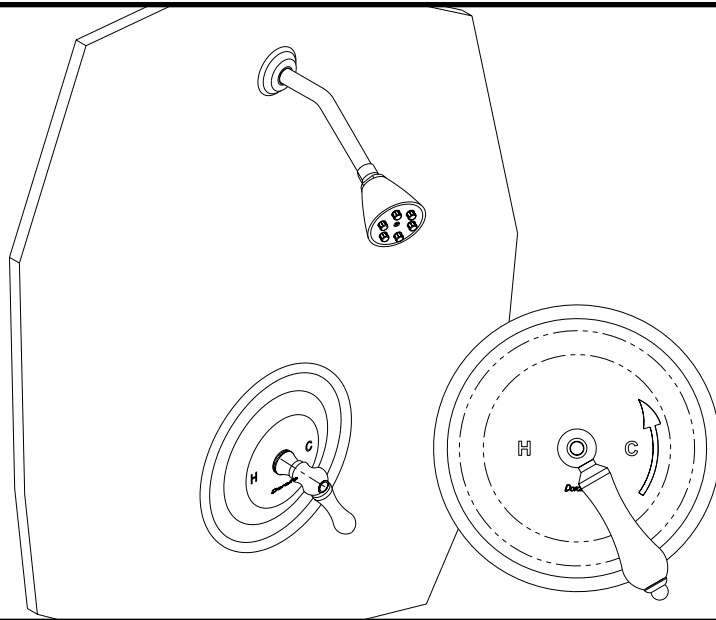
Attach handle to stem. Position the handle so that the lever is in the 5:00 position as shown above. Secure the handle.

### Step #T-4

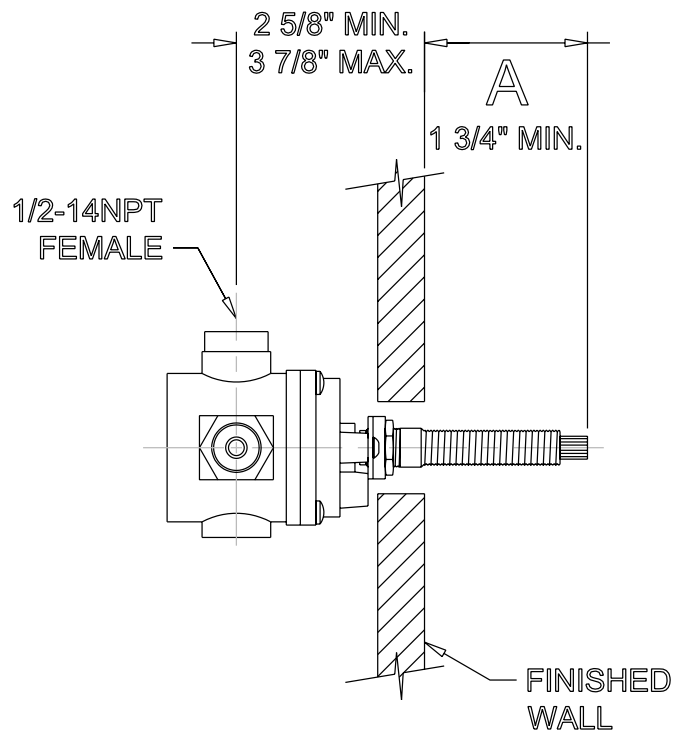


Apply a sealing tape to both ends of the 8" shower arm. Attach showerhead to long side of shower arm. Insert short end of arm into flange. Attach shower arm to brass elbow. Check connections for leaks. Slide the flange against the wall.

Final

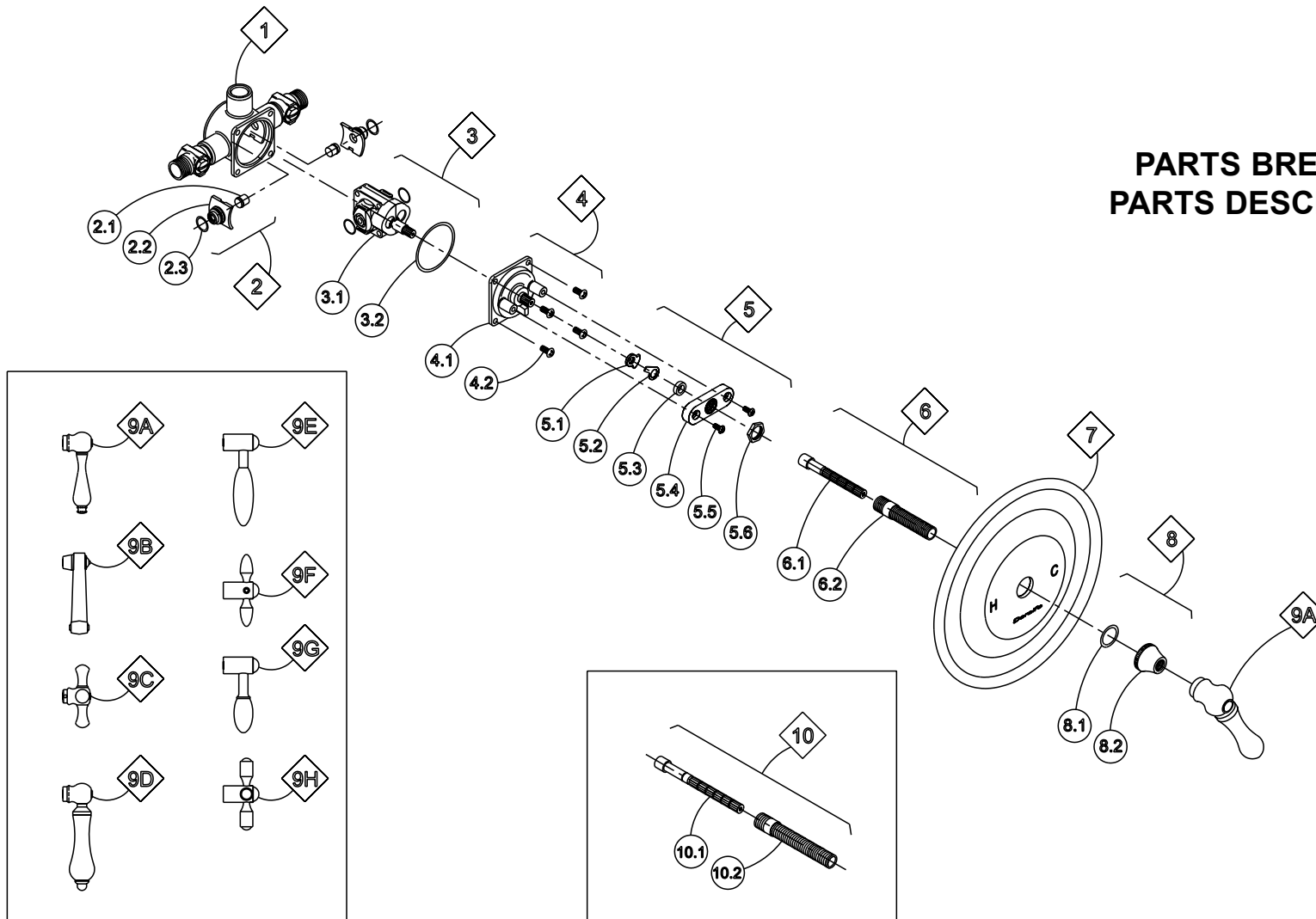


**ALL PHYLRICH VALVE  
INSTALLATIONS MUST  
FOLLOW THE  
MEASUREMENT FOR  
"A"  
LISTED BELOW.  
PLEASE CONSULT  
THE TRIM NUMBER  
FOR THE CORRECT  
ROUGH IN DIMENSION**



PROD #	ROUGH IN: "A"
DPB3100 .....	1 7/8"
DPB3102 .....	2"
DPB3103 .....	1 7/8"
DPB3111 .....	1 7/8"
DPB3220 .....	1 7/8"
DPB3221 .....	1 7/8"
DPB3222 .....	1 7/8"
DPB3223 .....	1 7/8"

# DFPHY PARTS BREAKOUT & PARTS DESCRIPTIONS



## Parts Description

- |    |   |     |   |
|----|---|-----|---|
| 1) | Single Outlet Valve Body with Stops     | 9a) | Revere Handle   |
| 2) | Filter (2)                              | 9b) | Savannah Handle   |
| 3) | EF Cartridge Assembly                   | 9c) | Normandy Handle   |
| 4) | Valve Cover Assembly (shipped with 3.2) | 9d) | Saratoga Handle   |
| 5) | Valve Adaptor Assembly                  | 9e) | Skyla Lever Handle                                      |
| 6) | Stem Assembly                           | 9f) | Skyla Cross Handle                                      |
| 7) | Doralfe Pressure Balance Plate          | 9g) | Luna Lever Handle                                       |
| 8) | Secure Nut                              | 9h) | Luna Cross Handle                                       |
|    |   | 10) | Extension for Pressure Balance Valve (sold seperately ) |