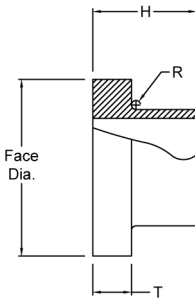


Flange Adapters

IPS Flange Adapters (SDR 7 - 335 psi)

Size [inch]	Part No.	H [inch]	T [inch]	Face Dia. [inch]	R (Radius)	Weight [lbs]
3/4		4.0	0.20	2.00	1/4	0.1
1		4.0	0.21	2.37	1/4	0.1
1-1/4		4.0	0.25	2.75	1/4	0.2
1-1/2		4.0	0.30	3.12	1/4	0.2
2		6.0	0.39	3.94	1/4	1
3		6.0	0.63	5.00	1/4	2
4		6.0	0.54	6.00	3/8	3
5		6.0	0.99	7.50	3/8	5
6		8.0	0.78	8.50	3/8	7
8		11.0	1.00	10.63	3/8	10
10		11.0	1.93	12.75	3/8	20
12		11.0	2.28	15.00	3/8	26
14		11.0	2.50	17.50	1/2	51
16		12.0	2.86	20.00	1/2	76
18		12.7	3.21	21.12	1/2	80
20		12.8	3.57	23.50	1/2	94



IPS Flange Adapters (SDR 9 - 250 psi)

Size [inch]	Part No.	H [inch]	T [inch]	Face Dia.	R (Radius)	Weight [lbs]
3/4		4.0	0.20	2.00	1/4	0.1
1		4.0	0.21	2.37	1/4	0.1
1-1/4		4.0	0.25	2.75	1/4	0.2
1-1/2		4.0	0.30	3.12	1/4	0.2
2		6.0	0.39	3.94	1/4	1
3		6.0	0.63	5.00	1/4	2
4		6.0	0.54	6.00	3/8	3
5		6.0	0.99	7.50	3/8	5
6		8.0	0.78	8.50	3/8	7
8		11.0	1.00	10.63	3/8	10
10		11.0	1.49	12.75	3/8	19
12		11.0	1.77	15.00	3/8	25
14		11.0	1.94	17.50	1/2	49
16		12.0	2.22	20.00	1/2	74
18		12.0	2.50	21.12	1/2	79
20		12.0	2.78	23.50	1/2	81
22		12.0	3.06	25.60	1/2	83
24		14.0	3.33	28.00	1/2	97
26		15.0	3.61	30.00	1/2	143
28		15.7	3.89	32.30	1/2	158
30		15.8	4.17	34.30	1/2	164
32		15.8	4.44	36.50	1/2	186