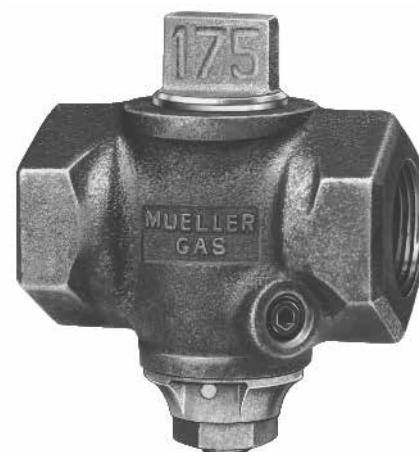
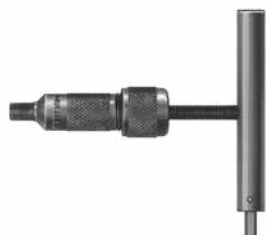


- ☐ Catalog number – **H-11170**
- ☐ Sizes* – 1/2", 3/4", 1", 1-1/4", 1-1/2", 2"
- ☐ Meets the test requirements specified in ASME B16.33
- ☐ Iron body valve
- ☐ Plain head
- ☐ Special lubrication system---can be re-lubricated under pressure
- ☐ O-ring sealed key
- ☐ Tamperproof feature
- ☐ Inlet and outlet with internal I.P. (F.I.P.) thread
- ☐ 175 psig (1208 kPa)
- ☐ Available with 1/8" test port feature optional



H-11170

Optional Equipment



H-11199

H-11199 Relubricating Tool
 Used to relubricate Mueller Luboseal Meter Valves with H-853 lubricant shown below. A hex wrench is built into the tool handle for removal of valve lubricating port pipe plug. One tool fits all valve sizes.

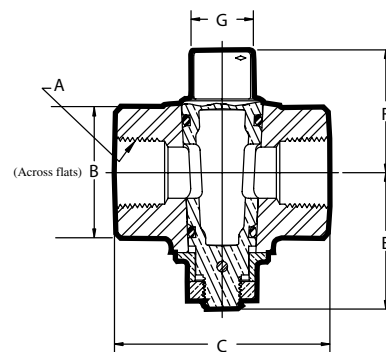


H-853

H-853 Ground Key Lubricant
 Used for dry, natural or manufactured gas, air and vacuum applications. NOT recommended for petroleum solvents, mineral oils or concentrated acids or alkalis.
 Box of 24 #1 sticks

H-11170 MUELLER LUBOSEAL Meter Valve Dimensions

Dimension	Valve Size*					
	1/2"	3/4"	1"	1-1/4"	1-1/2"	2"
A	1/2"-14	3/4"-14	1-11/12"	1-1/4"-11-1/2"	1-1/2"-11-1/2"	2"-11-1/2"
B	1-1/2"	1-29/32"	2-15/64"	2-43/64"	3-7/64"	3-41/64"
C	2-13/16"	3-5/32"	3-13/16"	4-1/4"	4-5/8"	5-9/32"
D	1-13/32"	1-37/64"	1-29/32"	2-1/8"	2-5/16"	2-41/64"
E	1-37/64"	1-31/32"	2-5/32"	2-9/16"	2-11/16"	3-17/64"
F	1-9/32"	1-39/64"	1-57/64"	2-3/16"	2-35/64"	2-31/32"
G	3/4"	59/64"	1-11/64"	1-27/64"	1-19/32"	1-29/32"

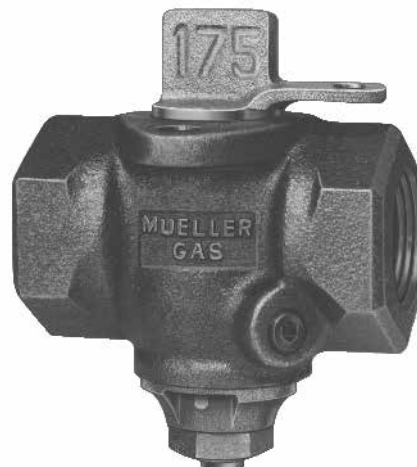


H-11170	Box Quantity
1/2"	25
3/4"	15
1"	15
1-1/4"	10
1-1/2"	5
2"	4

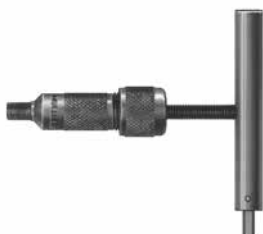
*Nominal

Rev. 8-17 Shaded area indicates changes

- ☐ Catalog number – **H-11175**
- ☐ Sizes* – 1/2", 3/4", 1", 1-1/4", 1-1/2", 2"
- ☐ Meets the test requirements specified in ASME B16.33
- ☐ Iron body valve
- ☐ Lockwing head
- ☐ Special lubrication system---can be re-lubricated under pressure
- ☐ O-ring sealed key
- ☐ Tamperproof feature
- ☐ Inlet and outlet with internal I.P. (F.I.P.) thread
- ☐ Available finishes: black (as cast), galvanized, electro-coat epoxy gray, electro-coat Rustoleum gray
- ☐ 175 psig (1208 kPa)
- ☐ Available with 1/8" test port feature

**H-11175**

Optional Equipment

**H-11199**

H-11199 Relubricating Tool
 Used to relubricate Mueller Luboseal Meter Valves with H-853 lubricant shown below. A hex wrench is built into the tool handle for removal of valve lubricating port pipe plug. One tool fits all valve sizes.

**H-853**

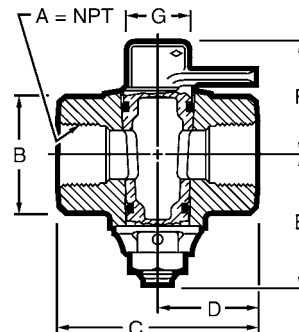
H-853 Ground Key Lubricant

Used for dry, natural or manufactured gas, air and vacuum applications. NOT recommended for petroleum solvents, mineral oils or concentrated acids or alkalies.

Box of 24 #1 sticks

H-11175 Mueller Luboseal Meter Valve Dimensions

Dimension	Valve Size**					
	1/2"	3/4"	1"	1-1/4"	1-1/2"	2"
A	1/2"-14	3/4"-14	1"-11-1/2	1-1/4"-11-1/2	1-1/2"-11-1/2	2"-11-1/2
B	1-1/2"	1-29/32"	2-15/64"	2-43/64"	3-7/64"	3-41/64"
C	2-13/16"	3-5/32"	3-13/16"	4-1/4"	4-5/8"	5-9/32"
D	1-13/32"	1-37/64"	1-29/32"	2-1/8"	2-5/16"	2-41/64"
E	1-37/64"	1-31/32"	2-5/32"	2-9/16"	2-11/16"	3-17/64"
F	1-9/32"	1-39/64"	1-57/64"	2-3/16"	2-35/64"	2-31/32"
G	3/4"	59/64"	1-11/64"	1-27/64"	1-19/32"	1-29/32"



H-11175	Box Quantity
1/2"	25
1/2"x3/4"x3/4"	15
3/4"	15
1"	15
1-1/4"	10
1-1/2"	7
2"	4

*First size is size of inlet, second is size of outlet

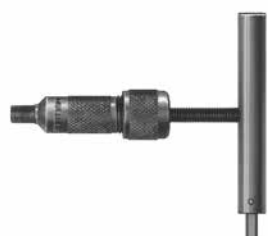
*Nominal

- ☐ Catalog number – **H-11174**
- ☐ Sizes* – 3/4", 1", 1-1/4", 2"
- ☐ Meets the test requirements specified in ASME B16.33
- ☐ Iron body valve
- ☐ Plain head
- ☐ Special lubrication system – can be re-lubricated under pressure
- ☐ O-ring sealed key
- ☐ Tamperproof feature
- ☐ Inlet and outlet with internal I.P. (F.I.P.) thread – insulating outlet
- ☐ Available finishes: black (as cast), galvanized, electro-coat epoxy gray, electro-coat Rustoleum gray
- ☐ 175 psig (1208 kPa)
- ☐ Available with 1/8" test port feature



H-11174

Optional Equipment



H-11199

H-11199 Relubricating Tool
 Used to relubricate Mueller Luboseal Meter Valves with H-853 lubricant shown below. A hex wrench is built into the tool handle for removal of valve lubricating port pipe plug. One tool fits all valve sizes.

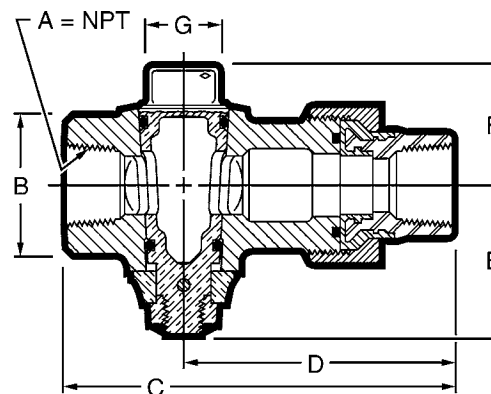


H-853

H-853 Ground Key Lubricant
 Used for dry, natural or manufactured gas, air and vacuum applications. NOT recommended for petroleum solvents, mineral oils or concentrated acids or alkalis.
 Box of 24 #1 sticks

H-11174 Mueller Luboseal Meter Valve Dimensions

Dimension	Valve Size*			
	3/4"	1"	1-1/4"	2"
A	3/4"-14	1"-11-1/2	1-1/4"-11-1/2	2"-11-1/2
B	1-29/32"	2-15/64"	2-43/64"	3-41/64"
C	5-13/64"	5-25/32"	6-11/32"	7-21/64"
D	3-5/8"	3-7/8"	4-7/32"	4-11/16"
E	2-1/16"	2-1/4"	2-23/32"	3-3/16"
F	1-49/64"	2-1/32"	2-11/32"	2-31/32"
G	59/64"	1-11/64"	1-27/64"	1-29/32"



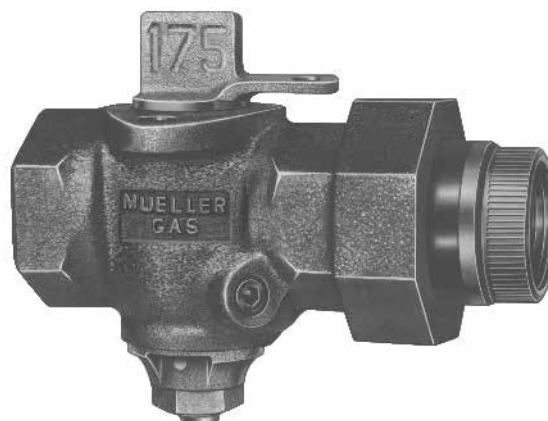
H-11174	Box Quantity
3/4"	15
1"	10
1-1/4"	7
2"	3

Replacement Parts				
	3/4"	1"	1-1/4"	2"
Steel tailpiece/union	83993	83994	83995	581308
Coupling nut - black	501466	501467	501468	528151
Coupling nut - galvanized	502018	N/A	N/A	506153
Union o-ring	40709	79351	501499	51329

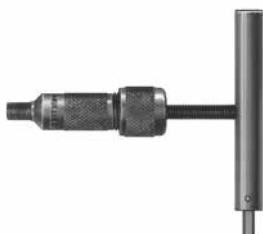
*Nominal

Rev. 8-17 Shaded area indicates changes

- ☐ Catalog number – **H-11179**
- ☐ Sizes** – 1/2"x1/2"x3/4"*, 3/4", 1", 1-1/4", 2"
- ☐ Meets the test requirements specified in ASME B16.33
- ☐ Iron body valve
- ☐ Lockwing head
- ☐ Special lubrication system---can be re-lubricated under pressure
- ☐ O-ring sealed key
- ☐ Tamperproof feature
- ☐ Inlet and outlet with internal I.P. (F.I.P.) thread – insulating outlet
- ☐ Available finishes: black (as cast), galvanized, electro-coat epoxy gray, electro-coat Rustoleum gray – 1/2"x1/2"x3/4" size available in galvanized only
- ☐ 175 psig (1208 kPa)
- ☐ Available with 1/8" test port feature

**H-11179**

Optional Equipment

**H-11199**

H-11199 Relubricating Tool
 Used to relubricate Mueller Luboseal Meter Valves with H-853 lubricant shown below. A hex wrench is built into the tool handle for removal of valve lubricating port pipe plug. One tool fits all valve sizes.

**H-853**

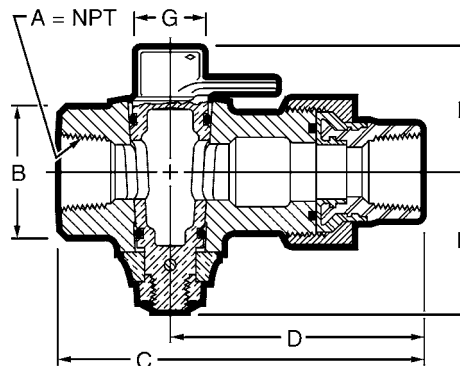
H-853 Ground Key Lubricant

Used for dry, natural or manufactured gas, air and vacuum applications. NOT recommended for petroleum solvents, mineral oils or concentrated acids or alkalis.

Box of 24 #1 sticks

H-11179 Mueller Luboseal Meter Valve Dimensions

Dimension	Valve Size**				
	1/2" x 1/2" x 3/4"*	3/4"	1"	1-1/4"	2"
A	1/2"-14 x 3/4" -14	3/4"-14	1"-11-1/2	1-1/4"-11-1/2	2"-11-1/2
B	1-35/64"	1-27/32"	2-15/64"	2-43/64"	3-5/32"
C	5-1/32"	5-13/64"	5-25/32"	6-11/32"	7-21/64"
D	3-5/8"	3-5/8"	3-7/8"	4-7/32"	4-11/16"
E	1-37/64"	1-31/32"	2-5/32"	2-9/16"	3-17/64"
F	1-17/32"	1-52/64"	2-1/8"	2-23/64"	3-3/16"
G	3/4"	59/64"	1-11/64"	1-27/64"	1-29/32"



H-11179	Box Quantity
1/2"x1/2"x3/4"	12
3/4"	15
1"	10
1-1/4"	7
2"	3

Replacement Parts				
	3/4"	1"	1-1/4"	2"
Steel tailpiece/union	83993	83994	83995	581308
Coupling nut - black	501466	501467	501468	528151
Coupling nut - galvanized	502018	502019	502409	506153
Union o-ring	40709	79351	501499	51329

*First size is size of inlet, second is size of outlet – when three sizes are given, second size is nominal size of port opening.

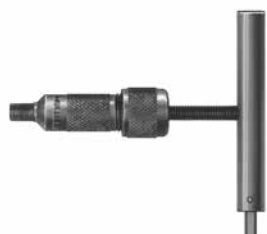
*Nominal

- ☐ Catalog number – **H-11180**
- ☐ Sizes* – 3/4", 1", 1-1/4"
- ☐ Meets the test requirements specified in ASME B16.33
- ☐ Ductile iron body valve
- ☐ Plain head
- ☐ Special lubrication system---can be re-lubricated under pressure
- ☐ Quad-ring sealed key
- ☐ Tamperproof feature
- ☐ Inlet and outlet with recessed internal I.P. (F.I.P.) thread
- ☐ Available finishes: black (as cast), galvanized, electro-coat epoxy gray, electro-coat Rustoleum gray
- ☐ 500 psig (3450 kPa)
- ☐ Available with 1/8" test port feature



H-11180

Optional Equipment



H-11199

H-11199 Relubricating Tool
 Used to relubricate Mueller Luboseal Meter Valves with H-853 lubricant shown below. A hex wrench is built into the tool handle for removal of valve lubricating port pipe plug. One tool fits all valve sizes.



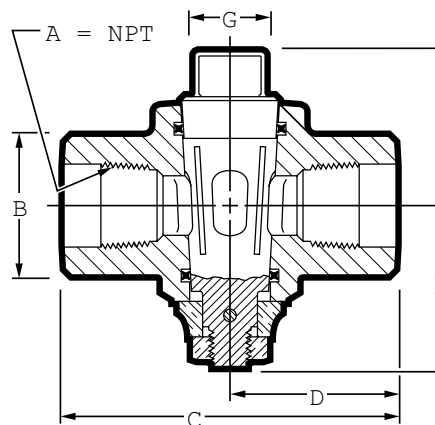
H-853

H-853 Ground Key Lubricant
 Used for dry, natural or manufactured gas, air and vacuum applications. NOT recommended for petroleum solvents, mineral oils or concentrated acids or alkalis.
 Box of 24 #1 sticks

H-11180 Mueller Luboseal Meter Valve Dimensions

Dimension	Valve Size*		
	3/4"	1"	1-1/4"
A	3/4"-14	1"-11-1/2	1-1/4"-11-1/2
B	1-7/8"	2-11/32"	2-7/8"
C	4-7/16"	5-3/16"	5-3/4"
D	2-7/32"	2-19/32"	2-7/8"
E	2-11/64"	2-19/64"	2-7/8"
F	2-3/64"	2-11/32"	2-25/32"
G	59/64"	1-11/64"	1-27/64"

H-11180	Box Quantity
3/4"	10
1"	6
1-1/4"	6



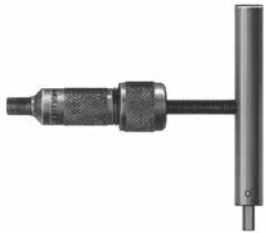
*Nominal

Rev. 8-17 Shaded area indicates changes

- ☐ **Catalog number – H-11185**
- ☐ Sizes**– 1/2"x3/4"*, 3/4", 1", 1-1/4", 2"
- ☐ Meets the tested requirements specified in ASME B16.33
- ☐ Ductile iron body valve
- ☐ Lockwing head
- ☐ Special lubrication system---can be re-lubricated under pressure
- ☐ Quad-ring sealed key
- ☐ Tamperproof feature
- ☐ Inlet and outlet with recessed internal I.P. (F.I.P.) thread
- ☐ Available finishes: black (as cast), galvanized, electro-coat epoxy gray, electro-coat Rustoleum gray
- ☐ 500 psig (3450 kPa)
- ☐ Available with 1/8" test port feature

**H-11185**

Optional Equipment

**H-11199**

H-11199 Relubricating Tool
 Used to relubricate Mueller Luboseal Meter Valves with H-853 lubricant shown below. A hex wrench is built into the tool handle for removal of valve lubricating port pipe plug. One tool fits all valve sizes.

**H-853**

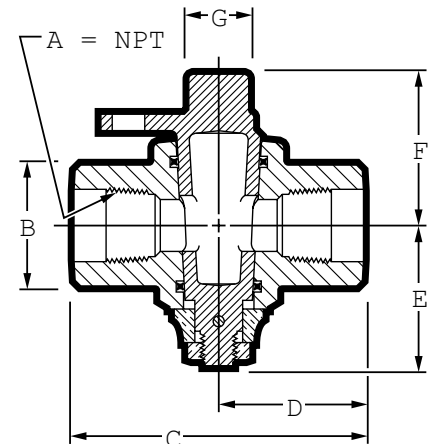
H-853 Ground Key Lubricant

Used for dry, natural or manufactured gas, air and vacuum applications. NOT recommended for petroleum solvents, mineral oils or concentrated acids or alkalies.

Box of 24 #1 sticks

H-11185 Mueller Luboseal Meter Valve Dimensions

Dimension	Valve Size**				
	1/2" x 3/4"***	3/4"	1"	1-1/4"	2"
A	1/2"-14 x 3/4" -14	3/4"-14	1"-11-1/2	1-1/4"-11-1/2	2"-11-1/2
B	1-27/32"	1-27/32"	2-15/64"	2-43/64"	3-31/32"
C	4-7/16"	4-7/16"	5-3/16"	5-3/4"	6-3/4"
D	2-7/32"	2-7/32"	2-1/32"	2-7/8"	3-3/8"
E	2-11/64"	2-11/64"	2-9/64"	2-7/8"	3-1/2"
F	2-11/32"	2-11/32"	2-5/8"	3-1/16"	3-13/16"
G	59/64"	59/64"	1-11/64"	1-27/64"	1-29/32"



H-11185	Box Quantity
1/2"x1/2"x3/4"	10
3/4"	10
1"	6
1-1/4"	5
2"	2

*First size is size of inlet, second is size of outlet.

**Nominal

MUELLER® LUBOSEAL® DOUBLE LOCKWING METER VALVE - 175 PSIG



14.15

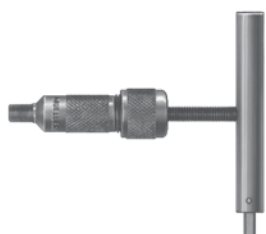
Shaded area indicates change Rev. 8-17

- ☐ Catalog number – H-11195
- ☐ Sizes* – 1" and 2"
- ☐ Meets the test requirements specified in ASME B16.33
- ☐ Iron body valve
- ☐ Double lockwing head
- ☐ Special lubrication system---can be re-lubricated under pressure
- ☐ O-ring sealed key
- ☐ Tamperproof feature
- ☐ Inlet and outlet with internal I.P. (F.I.P.) thread
- ☐ Available finishes: black (as cast), galvanized, electro-coat epoxy gray, electro-coat Rustoleum gray
- ☐ 175 psig (1208 kPa)
- ☐ Available with 1/8" test port feature



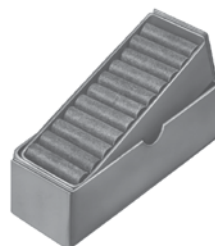
H-11195

Optional Equipment



H-11199

H-11199 Relubricating Tool
Used to relubricate Mueller Luboseal Meter Valves with H-853 lubricant shown below. A hex wrench is built into the tool handle for removal of valve lubricating port pipe plug. One tool fits all valve sizes.

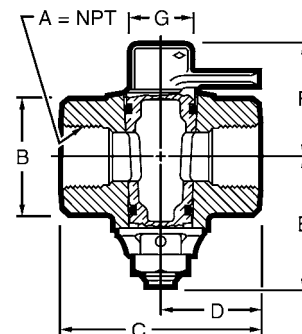


H-853

H-853 Ground Key Lubricant
Used for dry, natural or manufactured gas, air and vacuum applications. NOT recommended for petroleum solvents, mineral oils or concentrated acids or alkalis.
Box of 24 #1 sticks

H-11195 Mueller Luboseal Meter Valve Dimensions

Dimension		
	1"	2"
A	1"-11-1/2"	2"-11-1/2"
B	2-15/64"	3-41/64"
C	3-13/16"	5-9/32"
D	1-29/32"	2-41/64"
E	2-5/32"	3-17/64"
F	1-57/64"	2-31/32"
G	1-11/64"	1-29/32"

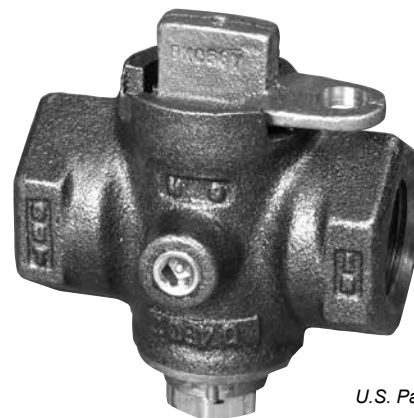


H-11195	Box Quantity
1"	10
2"	4

*Nominal

Rev. 8-17 Shaded area indicates changes

- ☐ Catalog number – **H-11475**
- ☐ Size* – 1"
- ☐ Meets the test requirements specified in ASME B16.33
- ☐ Iron body valve
- ☐ Tamper proof design
- ☐ O-ring sealed key
- ☐ Special lubrication system – can be re-lubricated under pressure
- ☐ Exclusive tamper-proof by pass feature
- ☐ Available in black (as cast) or galvanized finish
- ☐ 100 psig (689 kPa)



U.S. Patented

H-11475

Optional Equipment

**H-11199**

H-11199 Relubricating Tool
 Used to relubricate Mueller Luboseal Meter Valves with H-853 lubricant shown below. A hex wrench is built into the tool handle for removal of valve lubricating port pipe plug. One tool fits all valve sizes.

**H-853**

H-853 Ground Key Lubricant
 Used for dry, natural or manufactured gas, air and vacuum applications. NOT recommended for petroleum solvents, mineral oils or concentrated acids or alkalis. Box of 24 #1 sticks

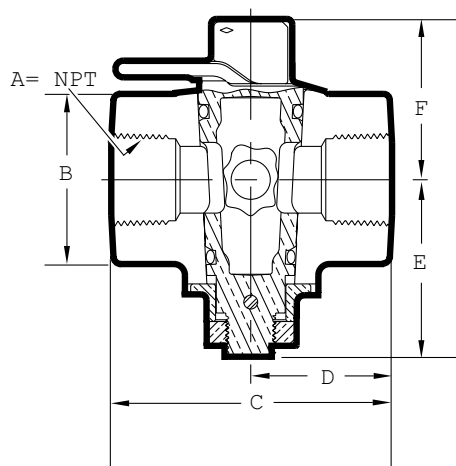
**529195**

529195 Wrench used to remove tamper-proof by pass plugs on all Brisco By pass Meter Valves

H-11475 Mueller Brisco By pass Meter Valve Dimensions

Dimension	Valve Size*
	1"
A	1"
B	1-15/16"
C	3-53/64"
D	1-29/32"
E	2-5/32"
F	2-1/8"

H-11475	Box Quantity
1"	15



*Nominal

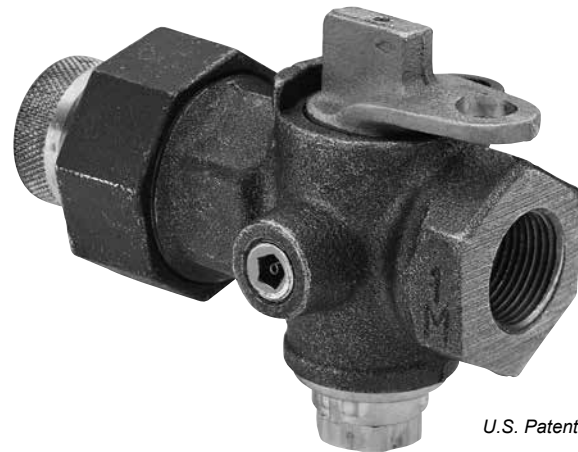
MUELLER® BRISCO™ BY PASS METER VALVE (FOR RISER SIDE) - 100 PSIG



14.17

Shaded area indicates change Rev. 8-17

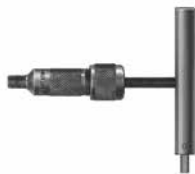
- ☐ Catalog number – H-11479
- ☐ Sizes* – 3/4", 1"
- ☐ Meets all applicable parts of D.O.T./CFR TITLE 49 PART 192 and ASME B16.33
- ☐ Iron body valve
- ☐ Tamper proof feature
- ☐ O-ring sealed key
- ☐ Special lubrication system – can be re-lubricated under pressure
- ☐ Exclusive tamper-proof by pass feature
- ☐ Available in black (as cast) or galvanized finish
- ☐ Insulated Union Outlet
- ☐ 100 psig (689 kPa)



U.S. Patented

H-11479

Optional Equipment



H-11199

H-11199 Relubricating Tool
Used to relubricate Mueller Luboseal Meter Valves with H-853 lubricant shown below. A hex wrench is built into the tool handle for removal of valve lubricating port pipe plug. One tool fits all valve sizes.



H-853

H-853 Ground Key Lubricant
Used for dry, natural or manufactured gas, air and vacuum applications. NOT recommended for petroleum solvents, mineral oils or concentrated acids or alkalis. Box of 24 #1 sticks



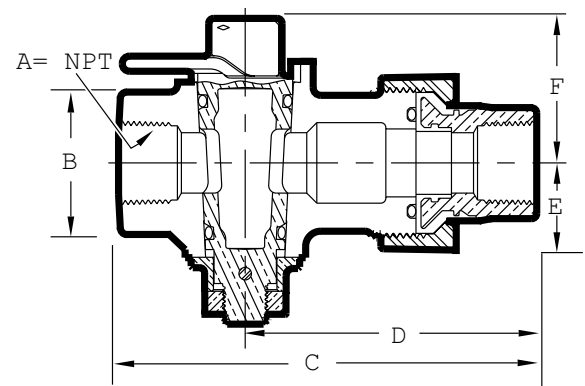
529195

529195 Wrench used to remove tamper-proof by pass plugs on all Brisco By pass Meter Valves

H-11479 Mueller Brisco By pass Meter Valve Dimensions

Dimension	Valve Size*	
	3/4"	1"
A	3/4"	1"
B	1-21/32"	1-15/16"
C	5-13/64"	5-25/32"
D	3-5/8"	3-7/8"
E	2"	2-5/32"
F	1-3/16"	2-1/8"

H-11479	Box Quantity
3/4"	15
1"	10



Replacement Parts		
	3/4"	1"
Steel tailpiece/union	83993	83994
Coupling nut - black	501466	501467
Coupling nut - galvanized	502018	502019
Union o-ring	40709	79351

*Nominal

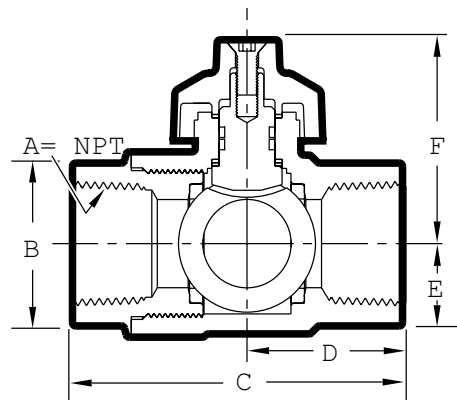
Rev. 8-17 Shaded area indicates changes

- ☐ Catalog number – **B-31175**
- ☐ Sizes* – 3/4", 1"
- ☐ Meets test requirements specified in ASME B16.33
- ☐ Tamper proof design
- ☐ Ductile Iron body
- ☐ Dual O-ring sealed stem
- ☐ Integral locking cap
- ☐ Cationic Epoxy Electrocoat inside and outside
- ☐ PTFE seats
- ☐ Nickel/Chrome plated brass ball
- ☐ 200 psig (1380 kPa)

**B-31175****B-31175 Mueller Centurion II Meter Valve Dimensions**

Dimension	Valve Size*	
	3/4"	1"
A	3/4"	1"
B	1-29/64"	1-7/8"
C	2-15/16"	3-31/64"
D	1-3/8"	1-43/64"
E	23/32"	15/16"
F	1-53/64"	1-63/64"

B-31175	Box Quantity
3/4"	18
1"	16



*Nominal

MUELLER® CENTURION II™
GAS METER BALL VALVE- 500 PSIG



14.19

Shaded area indicates change Rev. 8-17

- ☐ Catalog number – **B-3117565**
- ☐ Sizes* – 3/4"
- ☐ Meets test requirements specified in ASME B16.33
- ☐ Tamper proof design
- ☐ Ductile Iron body
- ☐ Dual O-ring sealed stem
- ☐ Integral locking cap
- ☐ Cationic Epoxy Electrocoat inside and outside
- ☐ PTFE seats
- ☐ Nickel/Chrome plated brass ball
- ☐ 500 psig (3447 kPa)

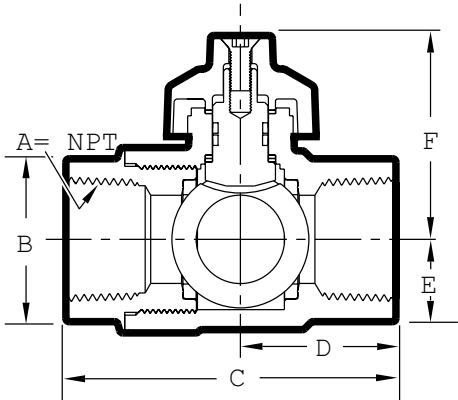


B-3117565

B-3117565 Mueller Centurion II Meter Valve Dimensions

Dimension	Valve Size* 3/4"
A	3/4"
B	1-29/64"
C	2-15/16"
D	1-3/8"
E	23/32"
F	1-53/64"

B-3117565	Box Quantity
3/4"	18



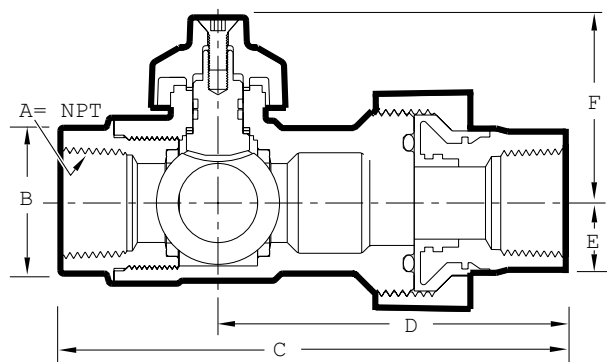
*Nominal

Rev. 8-17 Shaded area indicates changes

- ☐ Catalog number – **B-31179**
- ☐ Sizes* – 3/4", 1"
- ☐ Meets test requirements specified in ASME B16.33
- ☐ Tamper proof design
- ☐ Ductile iron body
- ☐ Dual O-ring sealed stem
- ☐ Integral locking cap
- ☐ Cationic Epoxy Electrocoat inside and outside
- ☐ PTFE seats
- ☐ Nickel/Chrome plated brass ball
- ☐ Insulated union outlet
- ☐ 200 psig (1380 kPa)
- ☐ Available finishes: 1-step gray epoxy

**B-31179****B-31179 Mueller Centurion II Meter Valve Dimensions**

Dimension	Valve Size*	
	3/4"	1"
A	3/4"	1"
B	1-29/64"	1-7/8"
C	5-1/6"	5-17/32"
D	3-29/64"	3-23/32"
E	49/64"	15/16"
F	1-53/64"	1-63/64"



B-31179	Box Quantity
3/4"	20
1"	16

Replacement Parts		
	3/4"	1"
Steel tailpiece/union	83993	83994
Coupling nut - E-coated	528241	528386
Coupling nut - 1-step epoxy	538460	538461
Union o-ring	40709	79351

*Nominal

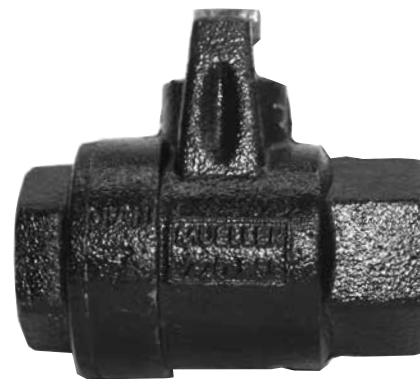
MUELLER® GAS METER BALL VALVE- 720 PSIG



14.21

Shaded area indicates change Rev. 8-17

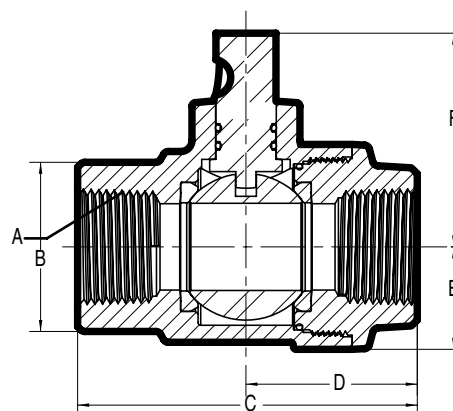
- ☐ Catalog number – **B-31185**
- ☐ Sizes* – 3/4", 1"
- ☐ Meets test requirements specified in ASME B16.33
- ☐ Ductile Iron body
- ☐ Dual O-ring sealed stem
- ☐ Cationic Epoxy Electrocoat inside and outside
- ☐ PTFE seats
- ☐ Nickel/Chrome plated brass ball
- ☐ 720 psig (4964 kPa)



B-31185

B-31185 Meter Valve Dimensions

Dimension	Valve Size*	
	3/4"	1"
A	3/4	1"
B	2-5/16	2-5/16
C	3-53/64	3-53/64
D	1-15/16	1-15/16
E	1-5/32	1-5/32
F	2-13/32	2-13/32



B-31185	Box Quantity
3/4"	10
1"	16

*Nominal

Rev. 8-17 Shaded area indicates changes

**Mueller Shur Stop FIP x FIP**

Non-directional flow; for Natural or LP gases; meets test requirements specified in ANSI B16.33; optional test taps at inlet and/or outlet; 175 psig (1208 kPa).

	Catalog Numbers	
	805002	805006
Body:	Black	Black
Size:	3/4"	1"
Weight (each):	2.9 lbs.	3.5 lbs.

**Mueller Shur Stop**

FIP x Wedgesal™ Insulated Union†
 Non-directional flow; for Natural or LP gases; meets test requirements specified in ANSI B16.33; optional test taps at inlet and/or outlet; 175 psig (1208 kPa).

	Catalog Numbers
	805000
Body:	Black
Pipe size:	3/4"
Weight (each):	3.6 lbs.

Replacement Parts	
	3/4"
Steel tailpiece/union	071197-5
Coupling nut - black	017814-1
Union o-ring	15294

Steel Dome Locking Device

The LOK-DOME™ locking device is made of hardened steel, with a zinc plated yellow chromate treatment. It fits over the Shur Stop valve head, shielding it from hammering, sawing or prying. One size fits both 3/4" and 1" Shur Stop valves. A two piece barrel locking pin is available that can be used with or without the LOK-DOME cap to lock-off Shur Stop valves. A special key is used to lock and unlock the device.

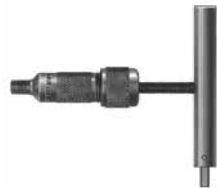


**71152
 LOK-DOME Cap**

* Includes an 1/8" steel recessed hex head pipe plug on side at inlet.

† Tailpiece of Wedgesal insulated union is brass. A 3/4" female NPT tailpiece is available in zinc plated steel.

++ Available in minimum quantities. Contact Customer Service for availability.



H-11199

H-11199 Relubricating Tool used to relubricate Mueller Luboseal® and Brisco™ Meter Valves with H-853 lubricant shown below. A hex wrench is built into the tool handle for removal of valve lubricating port pipe plug. One tool fits all valve sizes.



H-853

H-853 Ground Key Lubricant
Used for dry natural or manufactured gas, air and vacuum applications. NOT recommended for petroleum solvents, mineral oils or concentrated acids or alkalies. Box of 24 #1 sticks.



(valve not included)

Steel Yoke Locking Device
Can be used on the following 3/4" and 1" plain head Mueller® Gas meter valves (or meter valves of equivalent dimensions) to lock them in the closed position: H-11170, H-11174, H-11116, and H-11126. This device consists of a case hardened steel yoke that fits over the closed meter valve, a two piece parrel locking pin that secures the yoke to the valve, and a special key is used to lock and unlock the device. The yoke fits both 3/4" and 1" valves.

Yoke only: 507050
Barrel Locking pin only: 507049
Key only: 504980



(stop not included)

H-11090

H-11090 Lock wing sealing device
Is used with lock wings drilled 1/2". This device consists of two parts; collar and screw (H-11091) and a 15/32" O.D. pin (H-11092). This device is used to detect unauthorized use.



H-11091



H-11092



H-11093
(valve not included)

Iron Yoke Locking Device
Provides a method of locking the following plain head Mueller Gas meter valves (or meter valves of equivalent dimensions): H-11170, H-11174, H-11116, and H-11126. This device consists of an iron yoke that fits over the inlet hex and the key head of the closed valve, and a two piece barrel locking pin that secures the yoke to the valve body. A special key is required to operate the lock.

Part name	Size	
	3/4"	1"
Yoke	504976	504977
Locking pin	504978	504979
Key	504980	504980