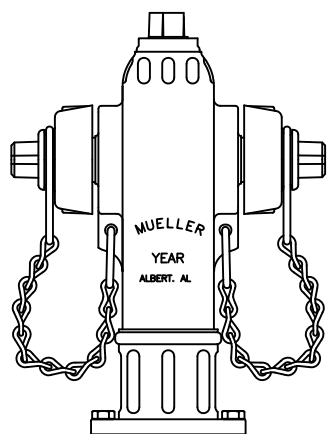
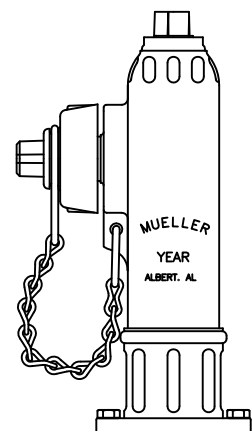


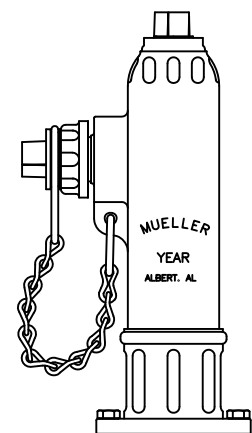
2 1/8" A-411 STANDARD FIRE HYDRANT-POST TYPE-W/TWO HOSE NOZZLES-150 P.S.I. W.P.-300 P.S.I.
 NOTE - SIZE & THREADING OF NOZZLE - SIZE & STYLE OF OPERATING NUT & SHOE TO SUIT ORDER



2 1/8 HYDRANT UPPER BARREL
 W/2 2 1/2 NOZZLE THREADS

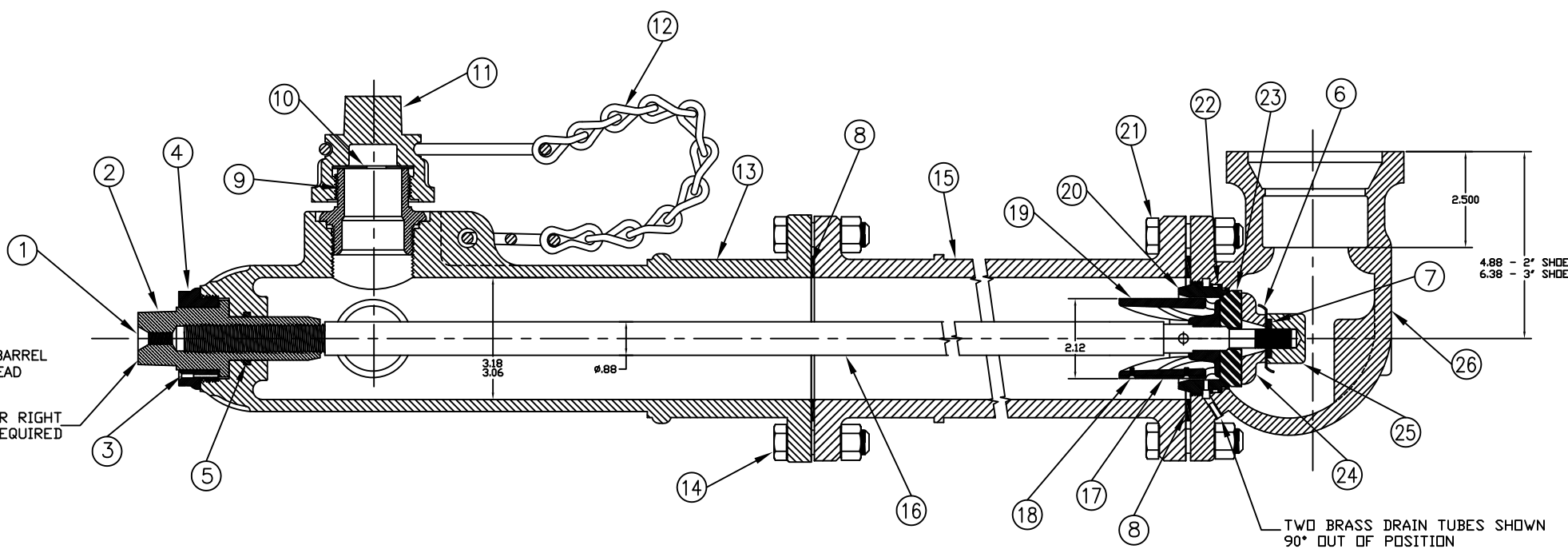
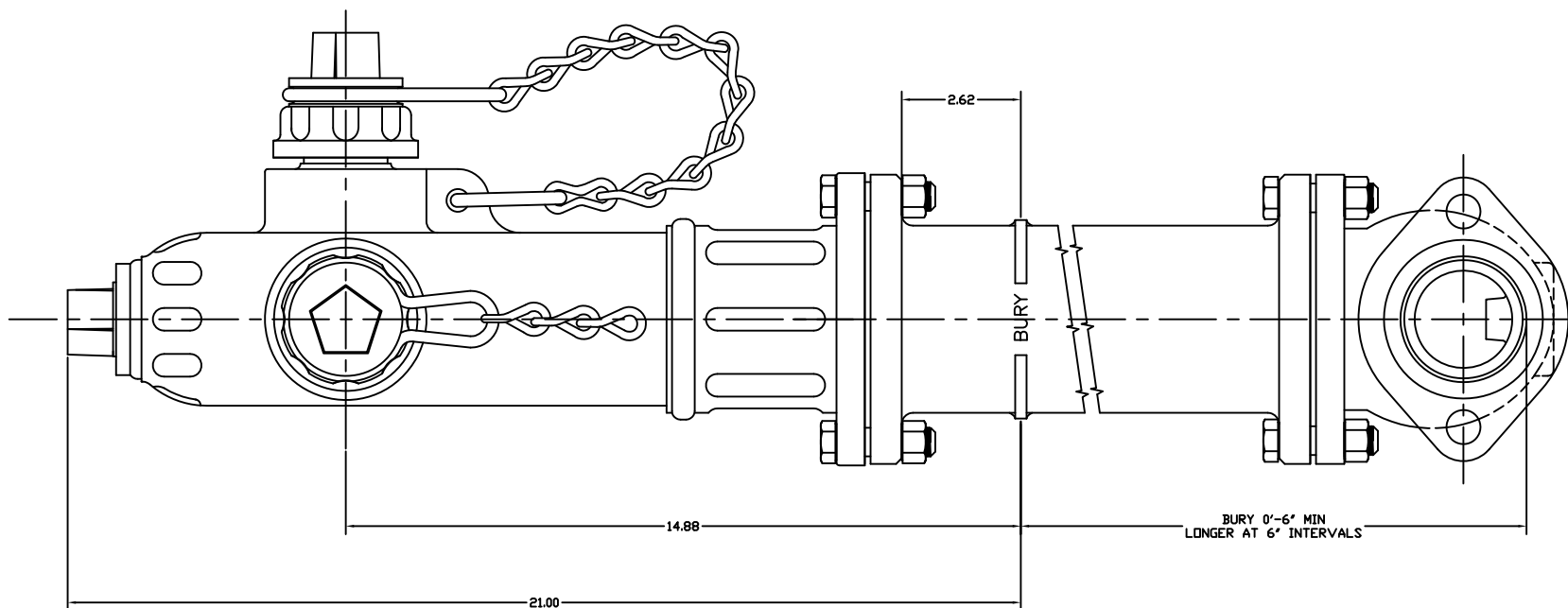


2 1/8 HYDRANT UPPER BARREL
 W/1 2 1/2 NOZZLE THREAD

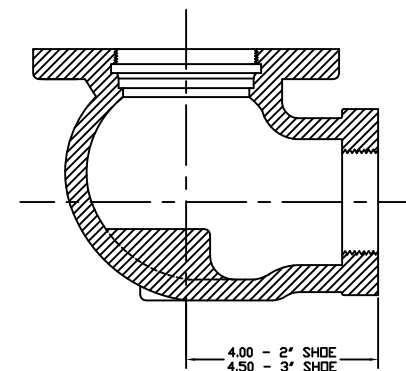


2 1/8 HYDRANT UPPER BARREL
 W/1 1 1/2 NOZZLE THREAD

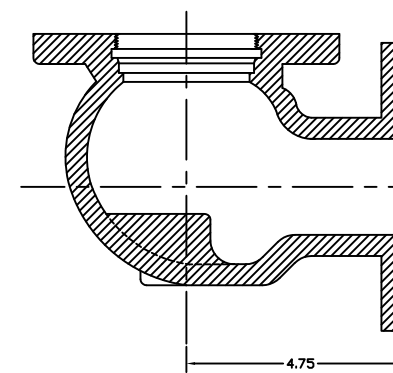
OPEN LEFT OR RIGHT
 AS REQUIRED



PARTS LIST					
ITEM	DESCRIPTION	REQ'D	MATERIAL	A.S.T.M.	
1	OIL SCREW	1	BRASS	B36	ALLOY 268
2	OPERATING NUT	1	BRONZE	B584	ALLOY C89833
3	HOLD DOWN NUT SCREW	1	BRASS		
4	HOLD DOWN NUT	1	BRONZE	B62	
5	O-RING SEAL	1	RUBBER		BUNA N
6	WASHER	1	STL. STEEL		TYPE 302
7	SEAL	1	RUBBER		R 12
8	GASKET	2	RUBBER		CLOTH INSERTRED
9	HOSE NOZZLE	2	BRONZE	B584	ALLOY C89833
10	HOSE NOZZLE GASKET	2	RUBBER	D735	TYPE SC-715
11	HOSE NOZZLE CAP	2	CAST IRON	A126	CLASS B
12	NOZZLE CAP CHAIN	2	STEEL		
13	UPPER BARREL	1	CAST IRON	A126	CLASS B
14	FLANGE BOLT	4	STEEL		ASA B18.2
15	LOWER BARREL	1	CAST IRON	A126	CLASS B
16	STEM	1	STEEL	A107	C1115
17	DRAIN VALVE	1	PLASTIC		
18	DRAIN VALVE SCREW	2	BRASS		
19	UPPER VALVE PLATE	1	BRONZE	B584	ALLOY C89833
20	SEAT RING	1	BRONZE	B584	ALLOY C89833
21	SHOE BOLT	4	STEEL		ASA B18.2
22	"O"-RING SEAL	1	RUBBER	D2000	
23	MAIN VALVE	1	RUBBER	D735	GRADE 910
24	LOWER VALVE PLATE	1	CAST IRON	A126	CLASS B
25	VALVE NUT	1	CAST IRON	A126	CLASS B
26	SHOE	1	CAST IRON	A-126	CLASS B



SCREW END SHOE



FLANGE END SHOE

(MILLIMETER) INCH INITIAL RELEASE DWG'N SMC 10-8-03 CHK'N JMG 10-8-03 APP JMG 10-8-03 E.O. NUMBER		TOLERANCES - MACHINING UNLESS OTHERWISE NOTED BREAK EDGES MACH. .006/.016 FINISH SURFACES 125 FRACTIONS ±1/64 DECIMALS 2 PL ±.025 3 PL ±.010 ANGLES ±1°		THIRD ANGLE PROJECTION PURCH. FINISH REF. NO. SCALE STK. NO. NUMBER 1:2 1 OF 1	
REV. A DESCRIPTION REF.		JMG DATE 11-7-13		MAT'L AS NOTED DESOR. 2 1/8" STD. FIRE HYDRANT W/ TWO HOSE NOZZLES REVISION A NUMBER FH-15	

FH-15