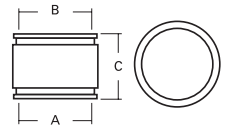


# Flexible Couplings - SIZING CHARTS for STOCK COUPLINGS

\*Designated part numbers come with an insert bushing.



## 1051 Series - Asbestos Cement Fibre (AC) or Ductile Iron to Cast Iron or Plastic

Part No.	A		B		C	
	in.	mm	in.	mm	in.	mm
*1051-43	4.80	122	3.38	86	4.06	103
1051-44	4.80	122	4.53	115	4.06	103
*1051-45	5.00	127	5.52	140	4.22	107
*1051-46	4.75	121	6.60	168	5.99	152
1051-54	5.75	146	4.47	114	3.95	100
1051-55	6.05	154	5.54	141	5.03	128
*1051-56	5.90	150	6.60	168	5.99	152
1051-64	6.84	174	4.30	109	5.93	151
1051-65	6.81	173	5.17	131	5.81	148
1051-66	6.81	173	6.39	162	5.85	148
*1051-68	6.80	173	8.64	219	6.29	160
*1051-86	9.12	232	6.38	162	6.23	158
1051-88	9.12	232	8.49	216	5.98	152
*1051-10-8	11.05	281	8.38	213	5.95	151
1051-1010	11.05	281	10.65	271	5.95	151
*1051-1210	13.00	330	10.75	273	6.49	165
1051-1212	13.00	330	12.38	314	6.24	158
*1051-1215	15.44	392	13.20	335	10.00	254
1051-1515	15.90	404	15.90	404	9.89	251
1051-1615	18.14	461	15.60	396	6.85	174
1051-1818	19.70	500	18.90	480	9.89	251

*1055-1615	18.10	460	16.50	419	9.89	251
1055-1616	18.10	460	18.10	460	9.89	251
1055-1818	19.70	500	19.70	500	9.89	251



## 1056 Series - CI, PL, Copper, ST or Lead to CI, PL, Copper, ST or Lead

Part No.	A		B		C	
	in.	mm	in.	mm	in.	mm
1056-075	1.05	27	1.05	27	2.38	60
1056-100	1.31	33	1.31	33	2.40	61
1056-125	1.63	41	1.63	41	3.45	88
1056-150/125	1.94	49	1.63	41	3.45	88
1056-150	1.94	49	1.94	49	3.43	87
1056-215	2.41	61	1.84	47	3.39	86
1056-22	2.41	61	2.41	61	3.45	88
1056-300	2.95	75	2.95	75	2.70	69
1056-315	3.35	85	1.91	49	3.87	98
1056-32	3.52	89	2.38	60	3.96	101
1056-33	3.46	88	3.46	88	3.98	101
1056-415	4.40	112	1.91	49	3.96	101
1056-42	4.40	112	2.35	60	3.88	99
1056-43	4.46	113	3.52	89	4.03	102
1056-44	4.58	116	4.58	116	4.02	102
1056-53	5.61	142	3.53	90	3.90	99
1056-54	5.57	141	4.26	108	3.95	100
1056-55	5.52	140	5.52	140	3.97	101
*1056-63	6.61	168	3.38	86	5.75	146
1056-64	6.61	168	4.46	113	5.75	146
1056-65	6.48	165	5.46	139	5.77	147
1056-66	6.60	168	6.60	168	5.74	146
*1056-84	8.51	216	4.38	111	5.99	152
1056-86	8.51	216	6.38	162	5.99	152
1056-88	8.64	219	8.64	219	6.04	153
*1056-10-6	10.25	260	6.38	162	6.23	158
1056-10-8	10.25	260	8.42	214	5.98	152
1056-1010	10.63	270	10.63	270	5.89	150
*1056-12-8	12.50	318	8.38	213	6.62	168
1056-1210	12.50	318	10.65	271	6.37	162
1056-1212	12.52	318	12.52	318	6.32	161
1056-1512	15.75	400	12.25	311	5.71	145
1056-1515	15.44	392	15.44	392	10.00	254
*1056-1815	19.00	483	15.30	389	9.89	251
1056-1818	19.00	483	19.00	483	9.89	251
1056-2121	22.50	572	22.50	572	9.89	251
1056-2424	25.10	638	25.10	638	9.89	251
1056-2727	28.30	719	28.30	719	9.89	251



## 1055 Series - AC or Ductile Iron to AC or Ductile Iron

Part No.	A		B		C	
	in.	mm	in.	mm	in.	mm
1055-44	4.76	121	4.76	121	3.96	101
*1055-54	6.05	154	5.00	127	5.28	134
1055-55	6.00	152	5.86	149	4.91	125
*1055-63	6.81	173	3.38	86	5.56	141
1055-64	6.81	173	4.80	122	5.56	141
1055-65	6.84	174	5.89	150	5.88	149
1055-66	6.95	177	6.95	177	5.92	150
*1055-84	9.12	232	5.00	127	6.23	158
*1055-86	9.12	232	6.80	173	6.23	158
1055-88	9.05	230	9.05	230	5.98	152
*1055-10-8	11.05	281	9.05	230	5.95	151
1055-1010	10.86	276	10.86	276	5.91	150
*1055-12-8	13.00	330	9.05	230	6.24	158
*1055-1210	13.00	330	11.12	282	6.24	158
1055-1212	13.20	335	13.20	335	5.97	152
*1055-1512	16.80	427	13.20	335	9.89	251
1055-1515	16.80	427	16.80	427	9.89	251





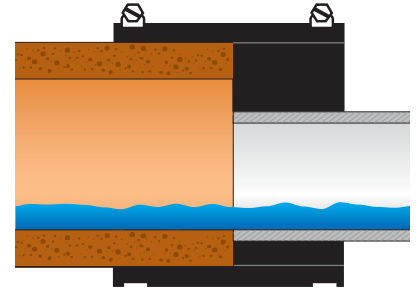
# Eccentric Bushings/Couplings

Maintaining a continuous flowline in critical grade conditions.



## EB TECHNICAL SPECS

- Available for **ALL** common sewer pipe materials and sizes
- Aligns the inside wall of the two pipes
- Meets ASTM C 1173 and D 5926
- 300 series stainless steel clamps



FLEXIBLE COUPLINGS

The following is a list of the more popular sewer pipe size / material combinations. Specific applications not listed here are available or can be custom ordered.

### 1002 EB Series - Clay to Cast Iron or Plastic

Part No.	Description
1002-42EB	Eccentric connection of 4" Clay to 2" CI or PL
1002-43EB	Eccentric connection of 4" Clay to 3" CI or PL
1002-44EB	Eccentric connection of 4" Clay to 4" CI or PL
1002-1212EB	Eccentric connection of 12" Clay to 12" CI or PL
1002-1215EB	Eccentric connection of 12" Clay to 15" CI or PL
1002-1512EB	Eccentric connection of 15" Clay to 12" CI or PL
1002-1515EB	Eccentric connection of 15" Clay to 15" CI or PL

### 1006 EB Series - Concrete to Cast Iron or Plastic

Part No.	Description
1006-44EB	Eccentric connection of 4" Concrete to 4" CI or PL
1006-64EB	Eccentric connection of 6" Concrete to 4" CI or PL

### 1051 EB Series -

Asbestos Cement Fibre (AC) or Ductile Iron to Cast Iron or Plastic

Part No.	Description
1051-10-6EB	Eccentric connection of 10" AC or DI to 6" CI or PL
1051-10-8EB	Eccentric connection of 10" AC or DI to 8" CI or PL
1051-12-4EB	Eccentric connection of 12" AC or DI to 4" CI or PL
1051-12-6EB	Eccentric connection of 12" AC or DI to 6" CI or PL

### 1055 EB Series -

Asbestos Cement Fibre (AC) or Ductile Iron to AC or Ductile Iron

Part No.	Description
1055-86EB	Eccentric connection of 8" AC or DI to 6" AC or DI
1055-12-8EB	Eccentric connection of 12" AC or DI to 8" AC or DI

### 1056 EB Series - CI, PL, Copper, ST or Lead to CI, PL, Copper, ST or Lead

Part No.	Description
1056-315EB	Eccentric connection of 3" CI or PL to 1½" CI or PL
1056-32EB	Eccentric connection of 3" CI or PL to 2" CI or PL
1056-415EB	Eccentric connection of 4" CI or PL to 1½" CI or PL
1056-42EB	Eccentric connection of 4" CI or PL to 2" CI or PL
1056-43EB	Eccentric connection of 4" CI or PL to 3" CI or PL
1056-54EB	Eccentric connection of 5" CI or PL to 4" CI or PL
1056-6/150EB	Eccentric connection of 6" CI or PL to 1½" CI or PL
1056-62EB	Eccentric connection of 6" CI or PL to 2" CI or PL
1056-63EB	Eccentric connection of 6" CI or PL to 3" CI or PL
1056-64EB	Eccentric connection of 6" CI or PL to 4" CI or PL
1056-65EB	Eccentric connection of 6" CI or PL to 5" CI or PL
1056-83EB	Eccentric connection of 8" CI or PL to 3" CI or PL
1056-84EB	Eccentric connection of 8" CI or PL to 4" CI or PL
1056-85EB	Eccentric connection of 8" CI or PL to 5" CI or PL
1056-86EB	Eccentric connection of 8" CI or PL to 6" CI or PL
1056-10-4EB	Eccentric connection of 10" CI or PL to 4" CI or PL
1056-10-6EB	Eccentric connection of 10" CI or PL to 6" CI or PL
1056-10-8EB	Eccentric connection of 10" CI or PL to 8" CI or PL
1056-12-6EB	Eccentric connection of 12" CI or PL to 6" CI or PL
1056-12-8EB	Eccentric connection of 12" CI or PL to 8" CI or PL
1056-1210EB	Eccentric connection of 12" CI or PL to 10" CI or PL
1056-1512EB	Eccentric connection of 15" CI or PL to 12" CI or PL

**When ordering Eccentric Bushings/Couplings, please provide the pipe sizes and materials being connected.**



This product can be custom ordered for ANY common sewer pipe size and material combination.

