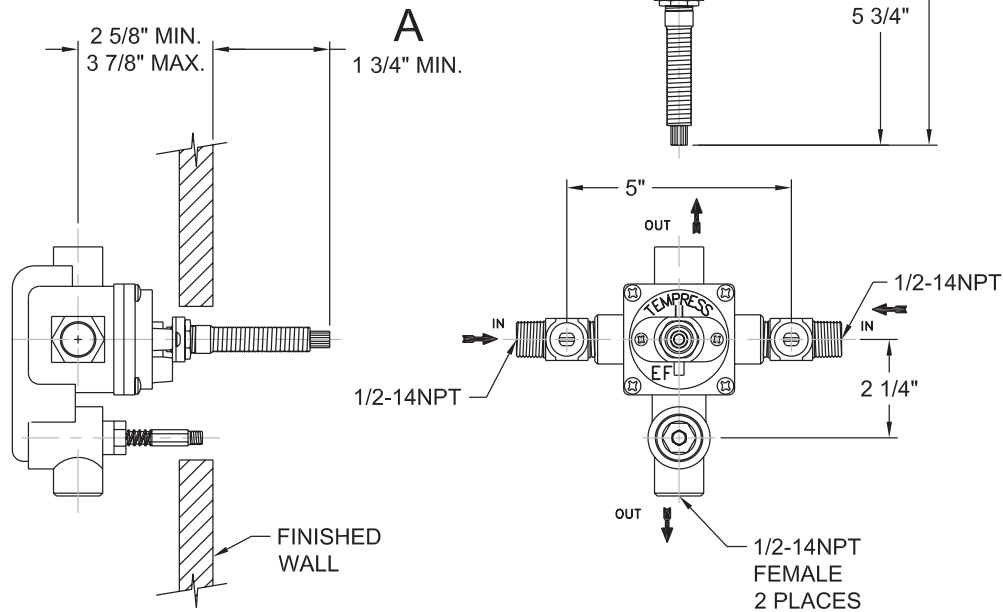


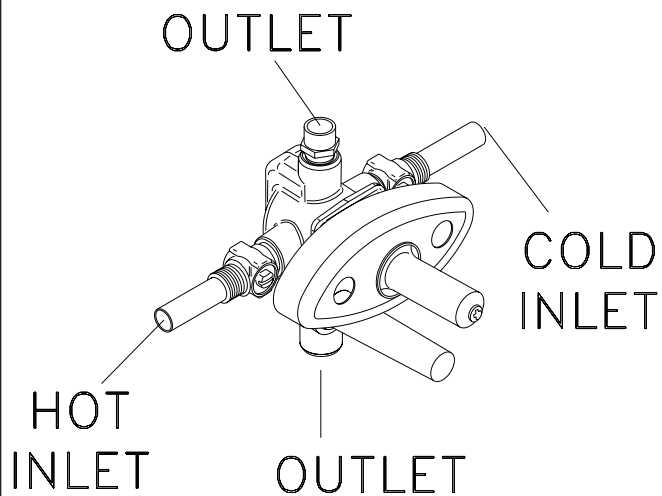


**INSTALLATION INSTRUCTIONS FOR
PRESSURE BALANCE TUB AND SHOWER SETS
VALVE NUMBERED: DFPHY/ID**

DFPHY/ID VALVE SPECIFICATIONS



Step #R-1

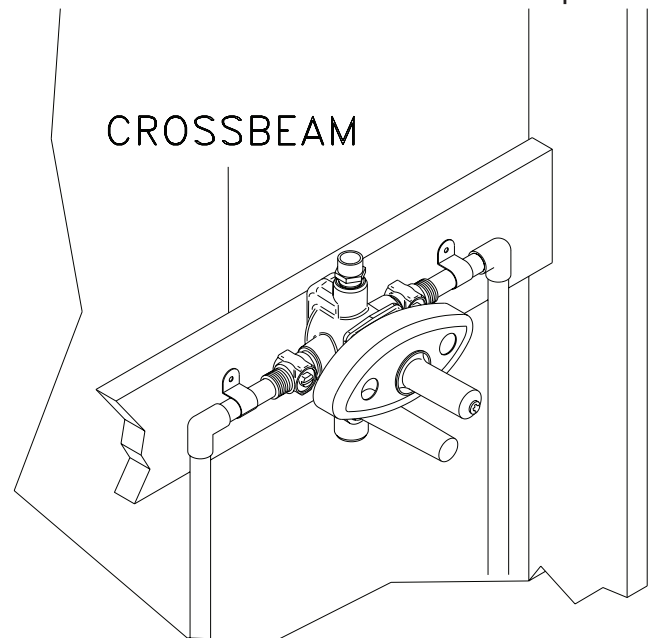


Install Valve as shown above.

NOTE

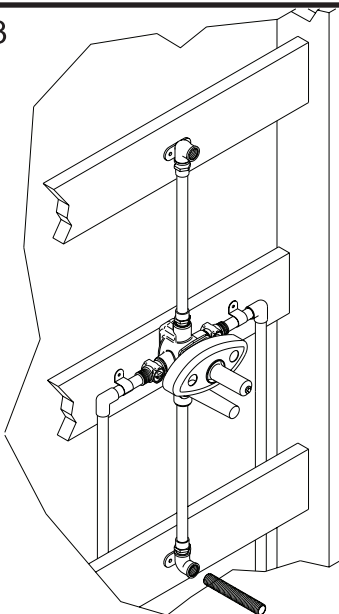
Do not apply heat directly on valves. Excessive heat will damage rubber and plastic seals and will void the warranty.

Step #R-2



Refer to P99026A with the trim number to determine the proper rough in for the valve. If the trim number is not known, refer to the specifications on the top of this page. Install crossbeam to secure valve. Connect valve inlets to hot and cold water supplies.

Step #R-3



Determine the locations of the fixtures to be used in this shower system.

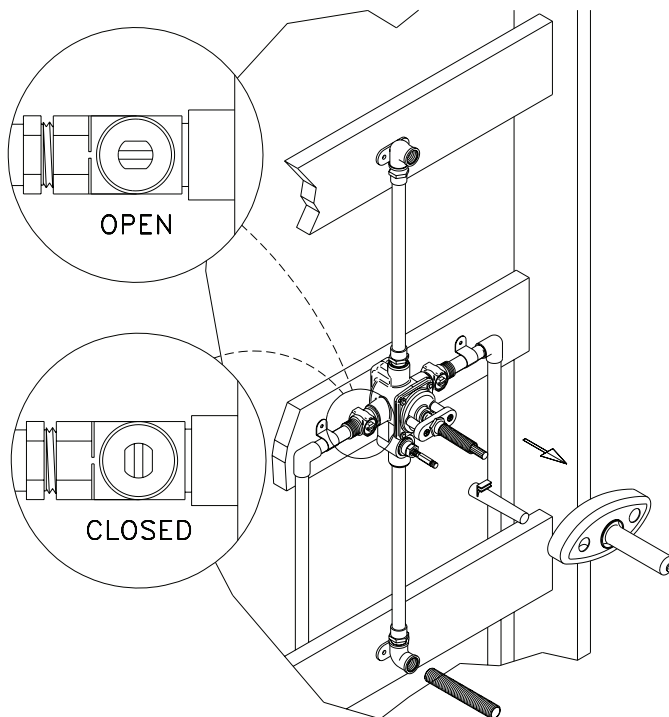
NOTE:

If a wall tub spout is to be installed, its outlet must be a minimum of 2" above the rim of the tub.

Install crossbeams and secure brass elbows as required.

Standard installation is shown above for reference.

Step #R-4

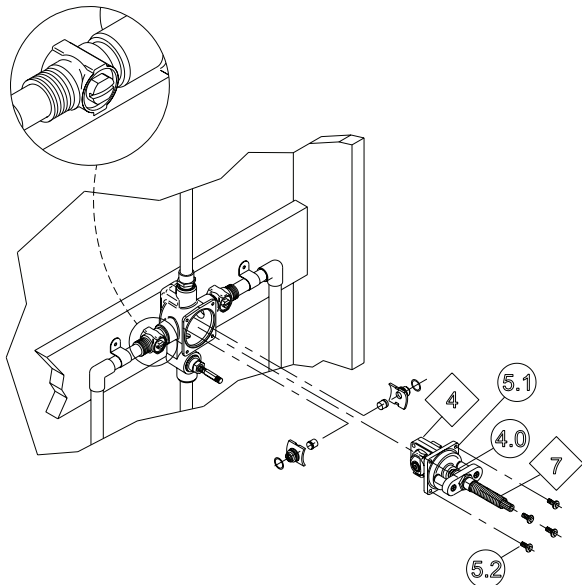


Remove mud cover (Do not discard).

Close integral stops.

Pressurize both hot and cold supplies.

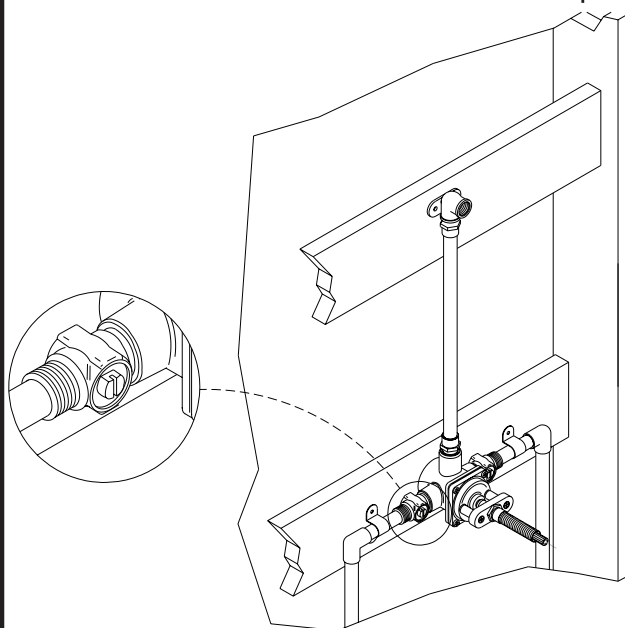
Step #R-5



Remove valve cover screws (#5.2). Pull stem assembly (#7.0), valve cover (#5.1) and cartridge (#4.0) **as one complete unit**. It is very important that this entire assembly be returned in the same configuration for the valve to function properly. Open integral stops to flush supply lines.

Failure to complete this step will void the warranty.

Step #R-6

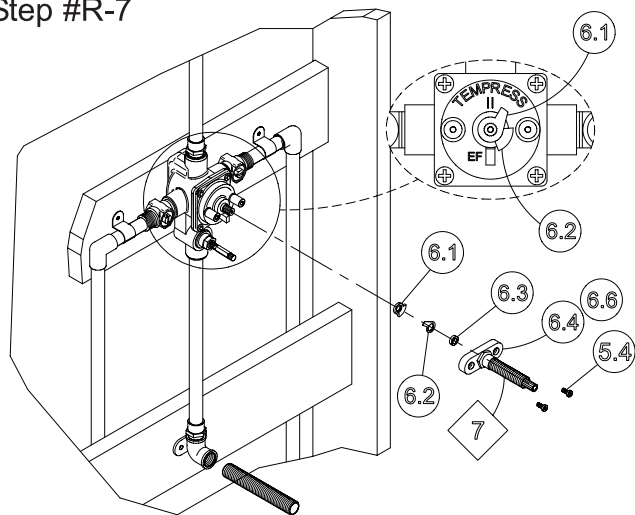


Close integral stops and reinstall cartridge, cover and stem assembly. **PRESSURE TEST THE VALVE.**

Water pressure must be applied to both hot and cold inlets at the same time to pressure test this valve.

Check all connections for leaks.

Step #R-7

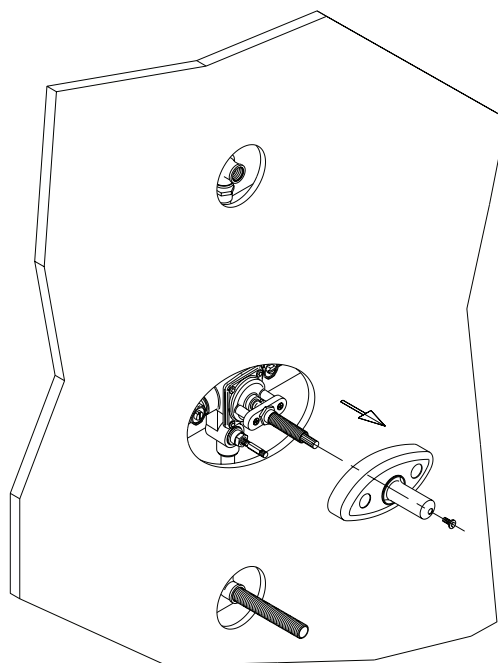


Should water drip from the outlet, remove stem assembly (#7) and mechanical stops and washer (#6.1, 6.2 & 6.3). Rotate cartridge stem clockwise until it stops. Reposition mechanical stop so that it is on the right side of the valve cover stop. Re-attach stem assembly. Close integral stops and reinstall tile guide and thread protectors. Wall is ready to be closed.

NOTE

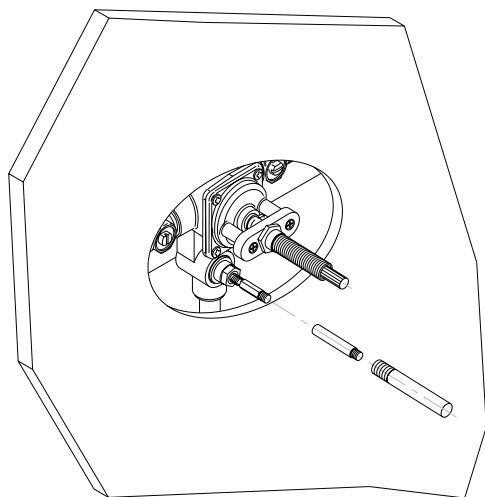
Allow adequate wall access to cartridges.

Step #T-1



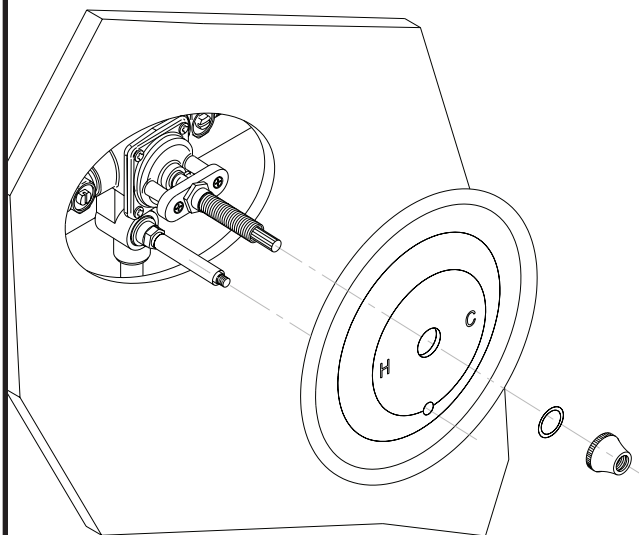
Remove mud cover when ready to install trim.

Step #T-2



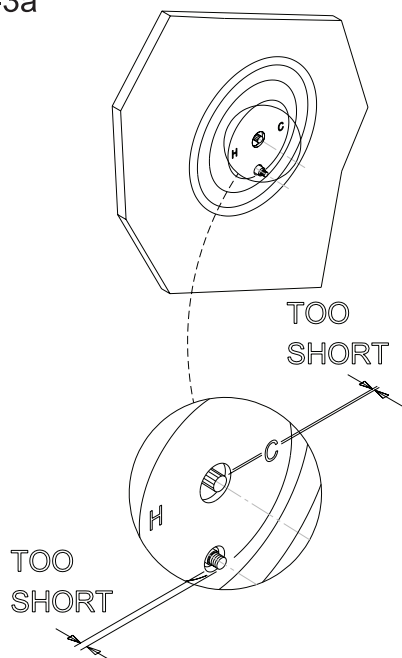
Thread on the diverter stem extension and the finished cover sleeve.

Step #T-3



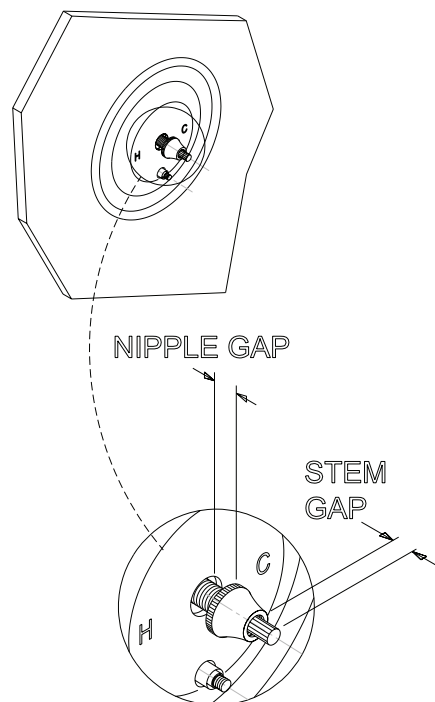
Position escutcheon plate so that the "H" and "C" are parallel to the floor and secure with escutcheon nut with o-ring. Tighten nut so that the plate cannot be rotated. If there are no threads for the nut to catch, see Step T-3a. If nut will not bottom out, see Step T-3 band T-3c.

Step #T-3a



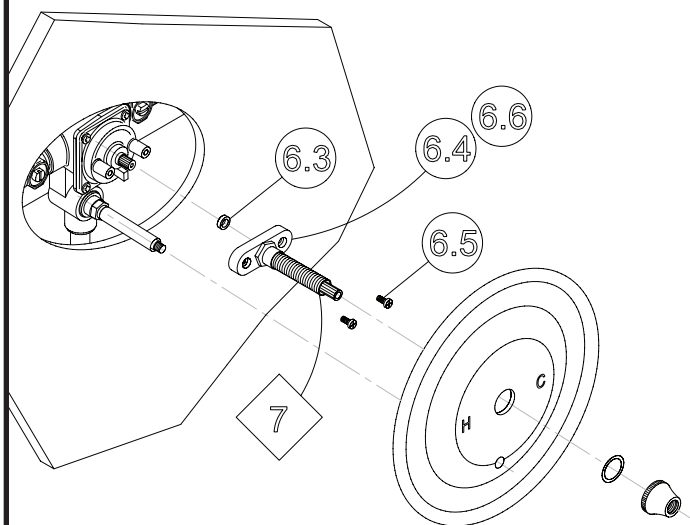
If the valve is installed too deep behind the wall, extension stems are available. Please contact your local distributor to order part number EXTWALL65_001.

Step #T-3b



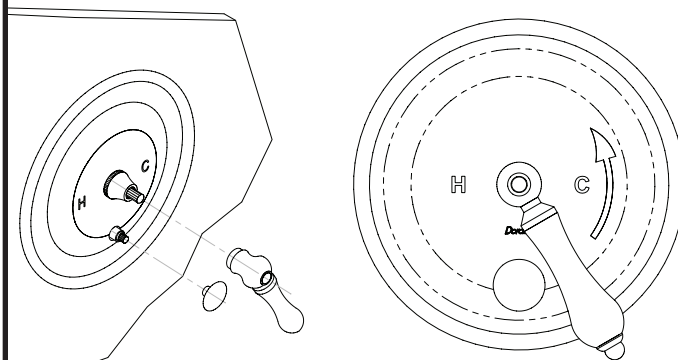
If the valve is installed too far out of the wall, the stem and nipple may be trimmed. To determine amount to be cut measure the gap between the escutcheon and the wall and/or the gap between the handle and escutcheon.

Step #T-3c



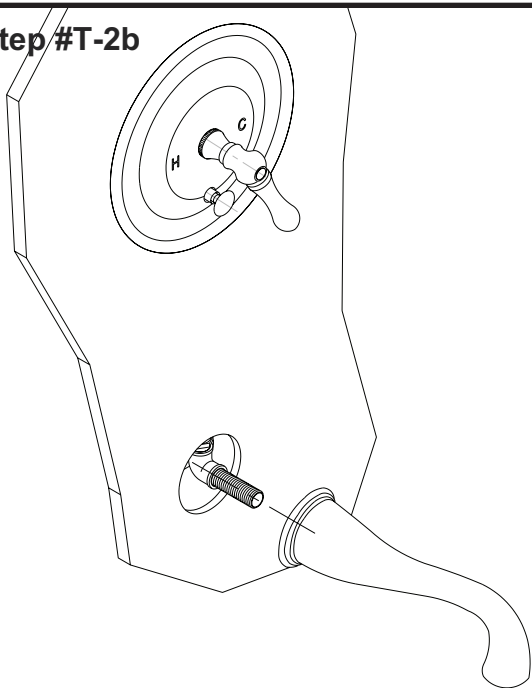
Remove secure nut, plate, stem assembly (#7), stem assembly (#5.3, 5.4 & 5.6) **as one complete unit**. Make appropriate cuts and reinstall as in step T-3.

Step #T-4



Attach handle to stem. Position the handle so that the lever is in the 5:00 position as shown above. Secure the handle.

Step #T-2b

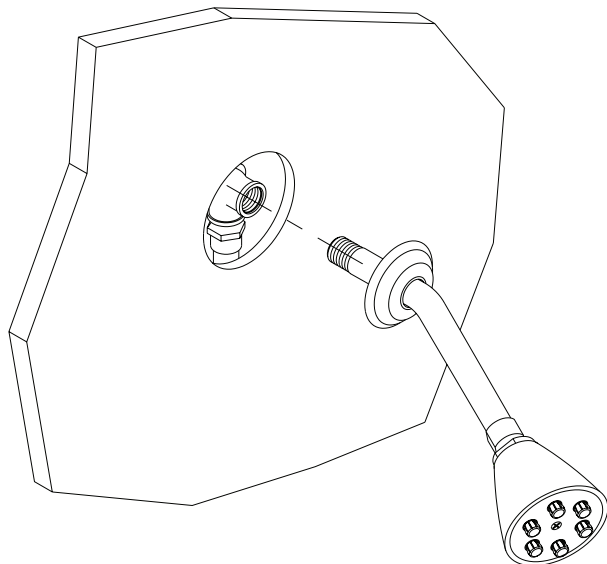


Apply Teflon tape to ½" brass nipple and attach wall tub spout. Check connections for leaks.

NOTE:

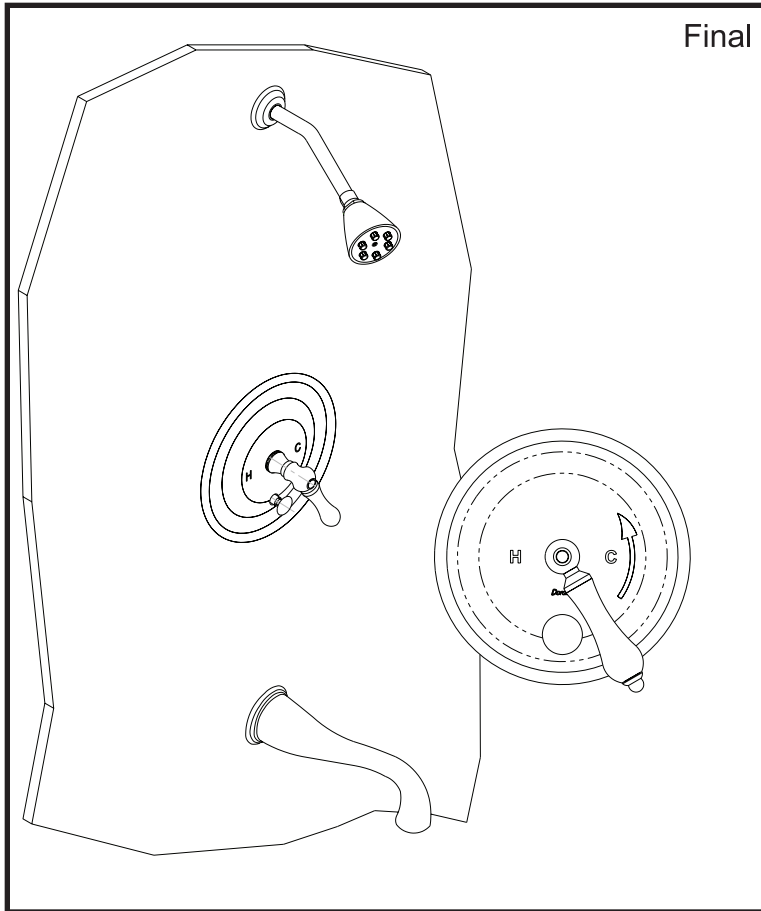
If a wall tub spout is to be installed, its outlet must be a minimum of 2" above the rim of the tub.

Step #T-2c

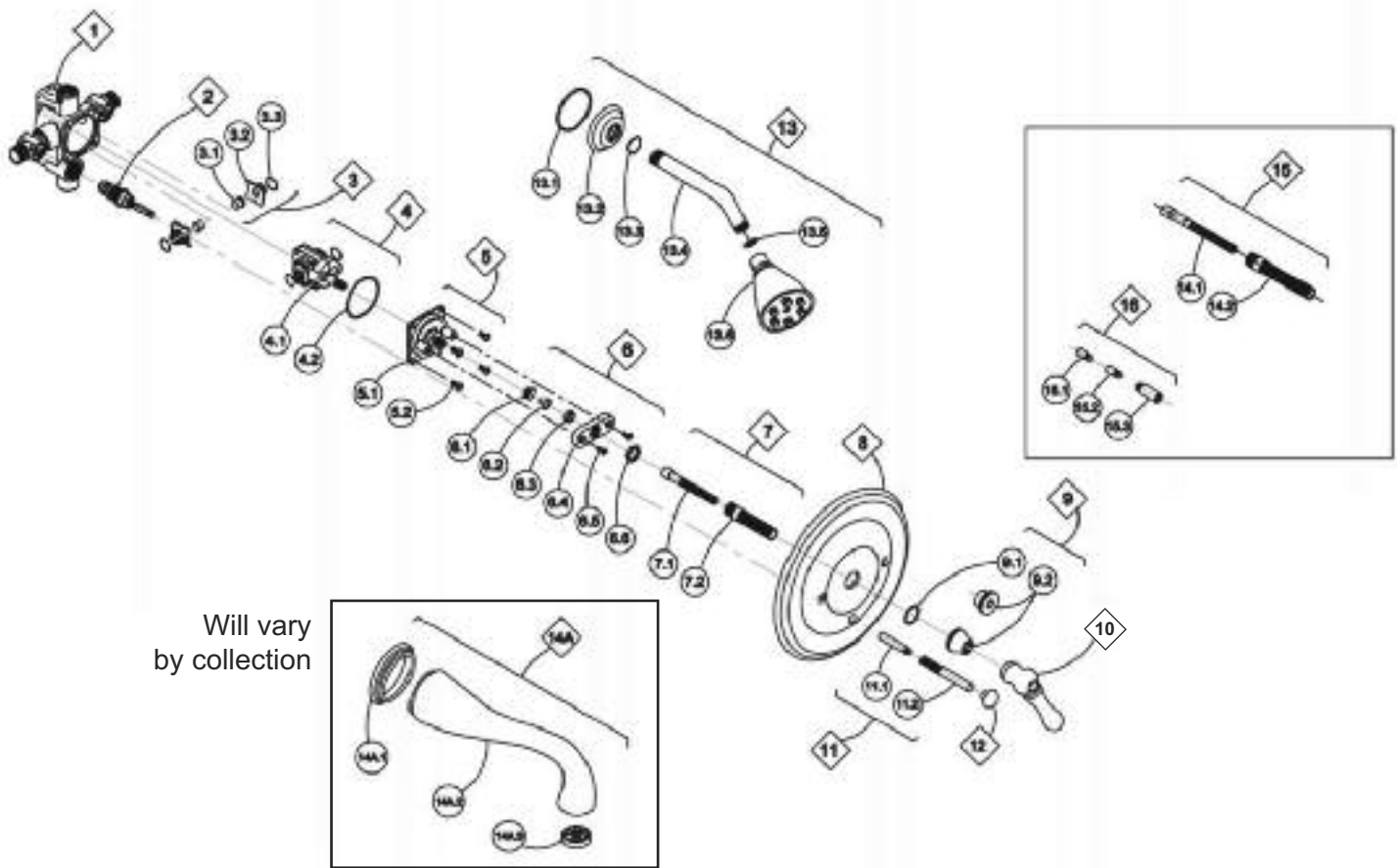


Apply a sealing tape to both ends of the 8" shower arm. Attach showerhead to long side of shower arm. Insert short end of arm into flange. Attach shower arm to brass elbow. Check connections for leaks. Slide the flange against the wall.

Final



DFPHY/ID PARTS BREAKOUT & PARTS DESCRIPTIONS



PARTS DESCRIPTION

- | | |
|---|---|
| <p>1) Single Outlet Valve Body with Stops</p> <p>2) Diverter Cartridge</p> <p>3) Filter (2)</p> <p>4) EF Cartridge Assembly</p> <p>5) Valve Cover Assembly (shipped with 3.2)</p> <p>6) Valve Adapter Assembly</p> <p>7) Stem Assembly</p> <p>8) Doralfe Pressure Balance Plate</p> | <p>9) Secure Nut</p> <p>10) Handle (will vary by collection)</p> <p>11) Pull Diverter Stem Assembly</p> <p>12) Pull Diverter Knob</p> <p>13) Shower Head, Arm & Flange</p> <p>14) Wall Tub Spout (will vary by collection)</p> <p>15) Extension for Pressure Balance Valve (sold separately)</p> <p>16) Extension for Pull Diverter</p> |
|---|---|