



KENNEDY VALVE



LISTED



APPROVED



AWWA

2"-12" Resilient Wedge Gate Valve

Model KS FW C509

General Dimensions

Note: 2" OS&Y Flanged and Threaded versions are UL Listed

All OS&Y Gates incorporate a pre-grooved stem for supervisory switch

Flanged valves: Standard taps are 1/2" for 4" and smaller valves. Standard taps are 3/4" for 6" and larger valves.

*Older production may have 1/2" taps.

END CONNECTIONS	STEM TYPE	SIZE RANGE	FIGURE NO.	w/ POST PLATE	PAGE NO.
Flanged Ends	Non-Rising	2"-12"	8561ASS	8701ASS (3"-12")	2, 3, 6
Mechanical Joint	Non-Rising	2"-12"*	8571SS	8071SS (3"-12")	2, 3, 8
Flange x Mechanical Joint	Non-Rising	3"-12"	8572SS	8702SS (3"-12")	2, 3, 9
Push-on for PVC (SDR)	Non-Rising	2"-8"	8597SS	8597PSS (3"-8")	2, 3, 12
Flanged Ends	OS&Y	2"-12"	8068A	N/A	4, 5, 7
Mechanical Joint x Tap Ends	Non-Rising	4"-12"	8950SS	8950PSS	2, 3, 15
Push-on for D.I. & C900 PVC	Non-Rising	4"-12"	8901SS	8901PSS	2, 3, 10
M.J. Cutting-in	Non-Rising	4"-12"	8576SS	8576PSS	2, 3, 13
Push-on for D.I. x Fig.	Non-Rising	4"-12"	8902SS	8902PSS	2, 3, 11
Threaded	Non-Rising	2"-3"	8057SS	8057PSS (3" only)	2, 3, 14
Threaded	OS&Y	2"-3"	8067SS	N/A	4, 5, 16

*excludes 2 1/2"

**SDR - Standard Dimension Ratio

SIZE RANGE	WATER WORKING PRESSURE PSI	SEAT TEST PSI	HYDROSTATIC SHELL TEST PSI
AWWA 2"-12"	250 Water Work	300	500
ULFM 2"-12"	200 Fire Protection	300	500

Available in either non-rising stem or outside screw & yoke.

ACCESSORIES

Indicator Posts

"T" Handles"

Stem Guides

2" Sq. Operating Nuts

Floor Boxes

Floorstands (Non-Rising Stem)

Handwheels

Extension Stems

Chain Wheels

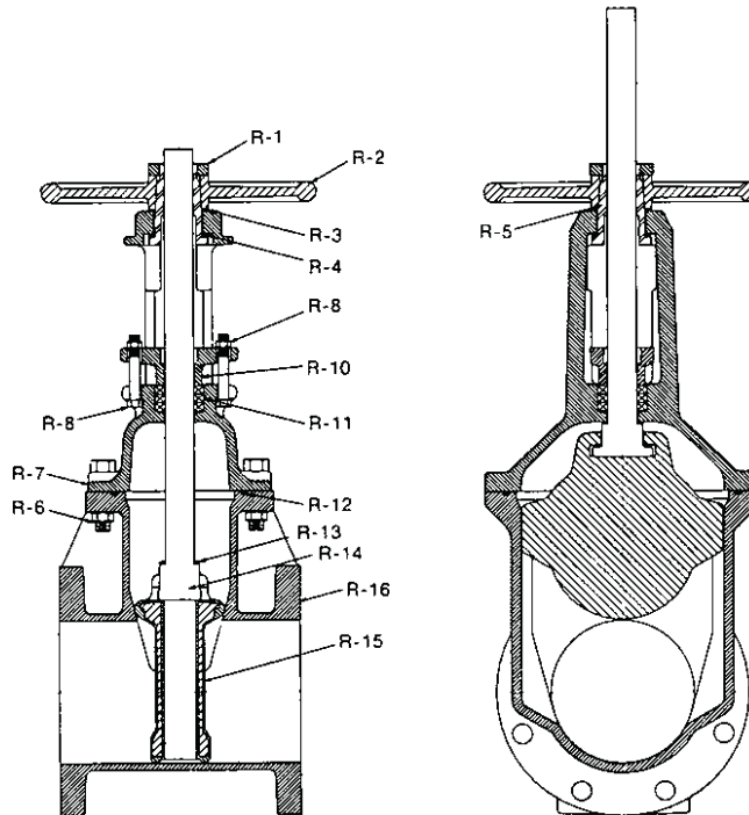


KENNEDY VALVE

2"-12" Resilient Seated Gate Valve KS FW OS&Y Materials List



AWWA



PIPE PLUG STANDARD ON FLANGE & GROOVE VALVES @ POSITION "A"

DET.	NAME OF PART	MATERIAL	ASTM SPEC.
R-1	Handwheel Nut	Bronze (AWWA Grade A)	ASTM B584 C84400
R-2	Handwheel	Cast Iron	ASTM A126 Class B
R-3	Upper Thrust Washer	Brass	ASTM B36 C26000
R-4	Lower Thrust Washer	Nylatron	-----
R-5	Yoke Nut	Bronze	ASTM B584 C86700
R-6	Hex. Head Cover Bolts & Nuts	Zinc Plated Steel	Grade 2 SAE J429
R-7	Cover	Cast Iron	ASTM A126 Class B
R-8	Packing Bolts	Zinc Plated Steel	Grade 2 SAE J429
R-8	Packing Bolt Nuts	Brass	ASTM F467
R-10	Packing Gland	Ductile Iron	ASTM A536 Grade 70-50-5
R-11	Packing	Sq. Braided Non-Asbestos	-----
R-12	O-Ring (Cover)	EPDM	-----
R-13	O-Ring (Stem)	EPDM	-----
R-14	Stem -- Pre-grooved	Stainless Steel	ASTM A276 Type 304
R-15	Wedge (EPDM Encapsulated)	Ductile Iron	ASTM A536 Grade 70-50-5
R-16	Body (All Types)	Cast Iron	ASTM 126 Class B
R-17	Pipe Plug	Low Carbon Steel	-----

9/25/20



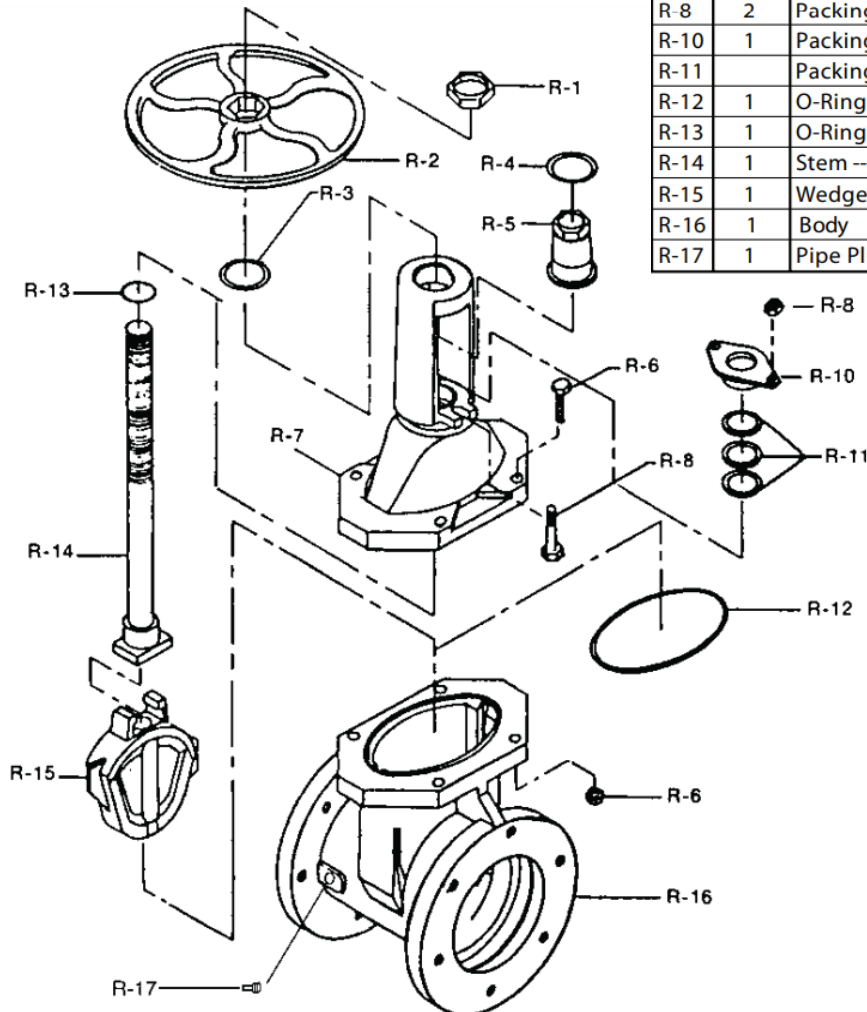
KENNEDY VALVE

2"-12" Resilient Seated Gate Valve KS FW OS&Y Assembly Explosion



AWWA

DET.	QTY.	DESCRIPTION	MATERIALS
R-1	1	Handwheel Hold Down Nut	Bronze
R-2	1	Handwheel	Cast Iron
R-3	1	Upper Thrust Washer (Sizes 3" thru 12")	Bronze
R-4	1	Lower Thrust Washer	Bronze
R-5	1	Yoke Nut	Bronze
R-6	4	Cover Bolts & Nuts (Sizes 2-1/2" thru 6")	Zinc Plated Steel
R-6	8	Cover Bolts & Nuts (Sizes 8" thru 12")	Zinc Plated Steel
R-7	1	Cover	Cast Iron
R-8	2	Packing Bolts	Zinc Plated Steel
R-8	2	Packing Bolt Nuts	Brass
R-10	1	Packing Gland	Ductile Iron
R-11		Packing	Sq. Braided Polymer
R-12	1	O-Ring (Cover)	EPDM
R-13	1	O-Ring (Stem)	EPDM
R-14	1	Stem -- Pre-grooved	Stainless
R-15	1	Wedge Disc	D.I. - EPDM Coated
R-16	1	Body	Cast Iron
R-17	1	Pipe Plug	Low Carbon Steel





KENNEDY VALVE



LISTED



APPROVED

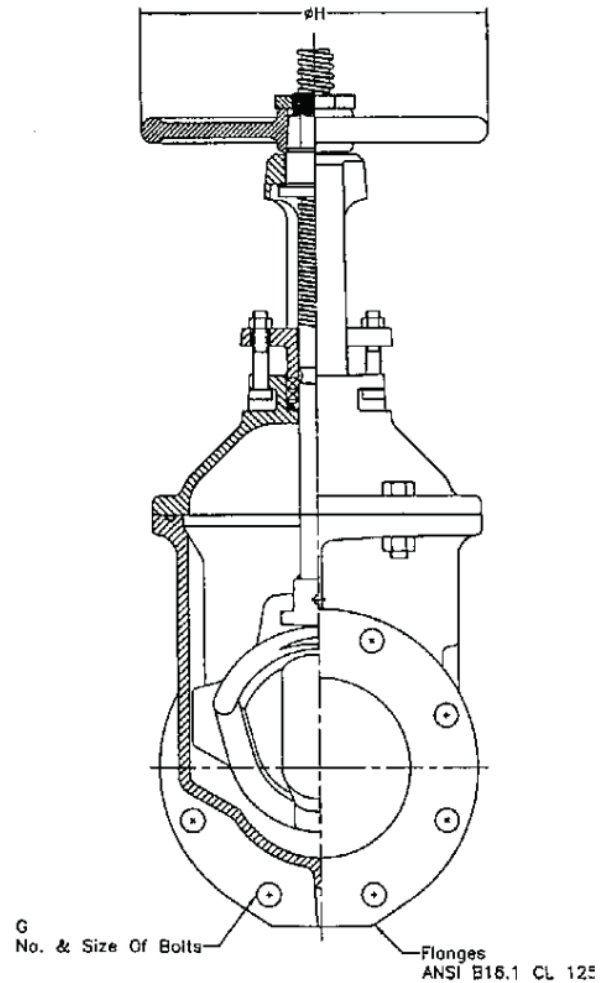
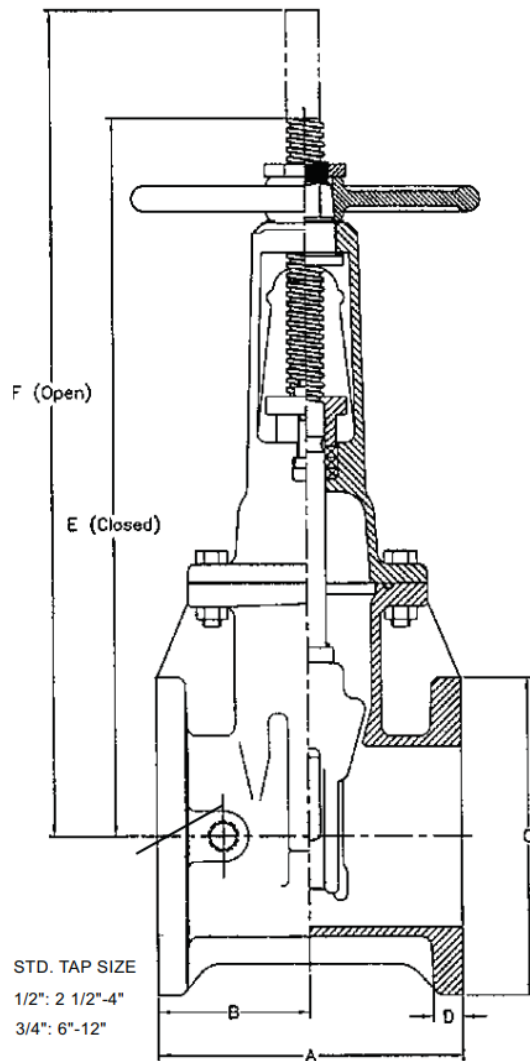


Certified to
ANSI/NSF-61

AWWA

2"-12" Resilient Seated Gate Valve KS FW OS&Y Flange Ends General Dimensions

Fig. 8068A



VALVE SIZE	* A	B	C	D	E	F	G	H	WEIGHT
2	7	3 1/2	6	5/8	12	10	4 5/8	7 1/4	N/A
2 1/2	7 1/2	3 3/4	7	11/16	13 7/8	16 3/8	4 5/8	7 1/4	51
3	8	4	7 1/2	3/4	15 5/8	18 7/8	4 5/8	10	64
4	9	4 1/2	9	15/16	18 1/4	22 3/4	8 5/8	10	105
6	10 1/2	5 1/4	11	1	23 3/4	30 1/8	8 3/4	12	152
8	11 1/2	5 3/4	13 1/2	1 1/8	29 1/4	37 3/4	8 3/4	14	253
10	13	6 1/2	16	1 3/16	35 3/8	45 3/4	12 7/8	18	427
12	14	7	19	1 1/4	40 5/8	53 1/8	12 7/8	18	581