

SCHEDULE 40 PVC DWV FITTINGS



FEATURES & BENEFITS

Lower Installation Costs

PVC pipe and fittings are easily handled, stored, cut and joined, meaning significant reductions in labor and transportation costs on typical installations.

Superior Chemical Resistance

PVC DWV pipe and fittings handle exceptionally well against such chemicals as acids, alkalis and normally diluted hydrocarbons. Aggressive industrial effluents and acid rain are easily tolerated as well.

Corrosion Resistance

PVC DWV fittings are immune to damage from naturally corrosive, soil conditions as well as electrochemical and galvanic corrosion. Our fittings' non-corroding properties ensure improved flow, lower maintenance costs and longer performance life.

Lower Thermal Conductivity

With a dramatically lower thermal conductivity factor as compared to metal, plastic systems have less heat loss or gain and sustain the temperature of the service with less variation than metal piping. As a result, pipe insulation is often not required.

Multi Fittings offers a wide range of injection molded and fabricated Schedule 40 DWV fittings for the sewer market.

PVC DWV fittings are typically used for drainage and effluent piping and rainwater leaders for buildings such as parking garages or from roof tops in commercial and industrial applications.

For over 50 years, Multi Fittings has been an industry leader in offering the most comprehensively engineered and tested fittings for plastic pipe in North America.

Multi Fittings produces the widest range of injection molded fittings for pressurized water mains and sewer forcemains, gravity flow sewers and drain, waste and vent applications.

SIZES

Injection Molded
4" – 12"

Fabricated Molded
10" – 24"

MULTI FITTINGS

Telephone: 519 681-2140
Toll Free: 800 265-1815
Fax: 519 681-2156

MULTI PVC DWV LARGE DIAMETER FITTINGS

026520	8x10 Increaser Coupling HxH - Fabricated Fitting	LPD25
026521	8x12 Increaser Coupling HxH - Fabricated Fitting	LPD25
026525	10x12 Increaser Coupling HxH - Fabricated Fitting	LPD25
026526	8x8x6x6 45 Double Wye HxHxHxH - Fabricated Fitting	LPD7
026527	8x8x8x8 45 Double Wye HxHxHxH - Fabricated Fitting	LPD7
026529	6x6x4 Cleanout Tee with Plug - Fabricated Fitting	LPD23
026530	6x6x6 Cleanout Tee with Plug - Fabricated Fitting	LPD23
026531	8x8x6 Cleanout Tee with Plug - Fabricated Fitting	LPD23
026532	10x10x6 Cleanout Tee with Plug - Fabricated Fitting	LPD23
026533	12X12X6 Cleanout Tee with Plug - Fabricated Fitting	LPD23
026534	8" Male Cleanout Adapter with Plug - Fabricated Fitting	LPD29
026536	10" Male Cleanout Adapter with Plug - Fabricated Fitting	LPD29
026537	12" Male Cleanout Adapter with Plug - Fabricated Fitting	LPD29
026546	8x8x6 Sanitary Tee HxHxH - Fabricated Fitting	LPD8
026558	10" Plug CxS - Fabricated Fitting	LPD24
026559	12" Plug CxS - Fabricated Fitting	LPD24
026572	8x8 22 1/2 Elbow (1/16 Bend) HxH - Fabricated Fitting	LPD14
026596	8" Female Cleanout Adapter with Plug - Fabricated Fitting	LPD28
026597	10" Female Cleanout Adapter with Plug - Fabricated Fitting	LPD28
026598	8" Plug CxS - Fabricated Fitting	LPD24
026600	12" Female Cleanout Adapter with Plug - Fabricated Fitting	LPD28
026601	12" Cap - Fabricated Fitting - Fabricated Fitting	LPD16
026603	10x18 Increaser Coupling HxH - Fabricated Fitting	LPD25
026609	6x6x6 Combo Wye HxHxH - Fabricated Fitting	LPD9
026610	8x8x4 Combo Wye HxHxH - Fabricated Fitting	LPD9
026611	8x8x6 Combo Wye HxHxH - Fabricated Fitting	LPD9
026612	8x8x8 Combo Wye HxHxH - Fabricated Fitting	LPD9
026613	10x10x4 Combo Wye HxHxH - Fabricated Fitting	LPD9
026614	10x10x6 Combo Wye HxHxH - Fabricated Fitting	LPD9
026615	10x10x8 Combo Wye HxHxH - Fabricated Fitting	LPD9
026616	10x10x10 Combo Wye HxHxH - Fabricated Fitting	LPD9
026617	12x12x4 Combo Wye HxHxH - Fabricated Fitting	LPD9
026618	12x12x6 Combo Wye HxHxH - Fabricated Fitting	LPD9
026619	12x12x8 Combo Wye HxHxH - Fabricated Fitting	LPD9
026620	12x12x10 Combo Wye HxHxH - Fabricated Fitting	LPD9
026621	6x6x4x4 Cross Tee HxHxHxH - Fabricated Fitting	LPD21
026622	6x6x6x6 Cross Tee HxHxHxH - Fabricated Fitting	LPD21
026623	8x8x4x4 Cross Tee HxHxHxH - Fabricated Fitting	LPD21
026624	8x8x6x6 Cross Tee HxHxHxH - Fabricated Fitting	LPD21
026625	8x8x8x8 Cross Tee HxHxHxH - Fabricated Fitting	LPD21
026626	10x10x4x4 Cross Tee HxHxHxH - Fabricated Fitting	LPD21
026627	10x10x6x6 Cross Tee HxHxHxH - Fabricated Fitting	LPD21
026628	10x10x8x8 Cross Tee HxHxHxH - Fabricated Fitting	LPD21
026629	10x10x10x10 Cross Tee HxHxHxH - Fabricated Fitting	LPD21
026630	12x12x4x4 Cross Tee HxHxHxH - Fabricated Fitting	LPD21
026631	12x12x6x6 Cross Tee HxHxHxH - Fabricated Fitting	LPD21
026632	12x12x8x8 Cross Tee HxHxHxH - Fabricated Fitting	LPD21
026633	12x12x10x10 Cross Tee HxHxHxH - Fabricated Fitting	LPD21
026634	12x12x12x12 Cross Tee HxHxHxH - Fabricated Fitting	LPD21
026638	12x12x12 Combo Wye HxHxH - Fabricated Fitting	LPD9
026641	10x10x6 Sanitary Tee HxHxH - Fabricated Fitting	LPD8
026665	10x10x4 Sanitary Tee HxHxH - Fabricated Fitting	LPD8

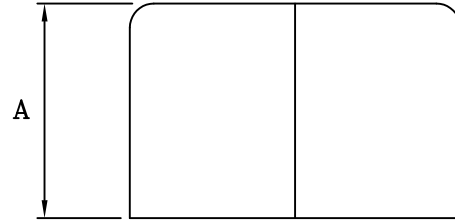


MULTI FITTINGS

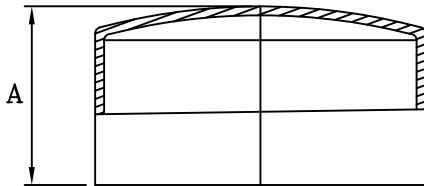
LAYING LENGTH

ISSUE DATE: JUN 30/05
SUPERCEDES: MAR 16/01

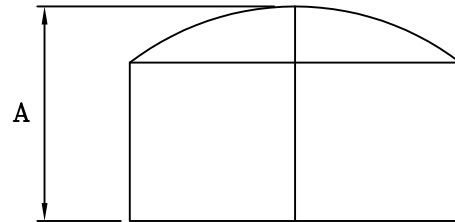
CAP



FABRICATED FITTING (F)



INJECTION MOLDED FITTING



FABRICATED FITTING (*F)

	SIZE	PART NUMBER	REFERENCE NUMBER	A REF	
-	4	026454	-	-	503
M=	6	026886	33636W	3. 500	084
M=	8	026888	33638W	4. 625	084
*F#	10	026283	-	5. 500	082
F#	12	026601	-	6. 000	082

NOTE: = Refer to Page LPD5 for hub detail
Refer to Page LPD5-1 for hub detail