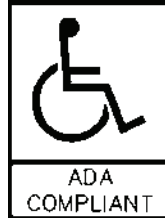
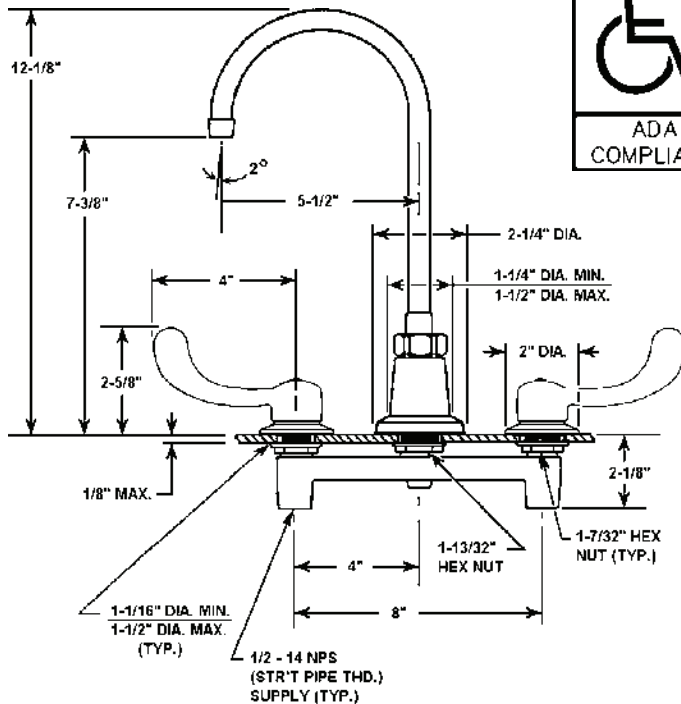




## FAUCET GROUP



## TECHNICAL DATA CONSTRUCTION:

Concealed ledgemount on 8 inch centers  
Cast brass body  
Rigid gooseneck spout with 7-3/8" clearance  
Replaceable seats  
Brass quarter turn quick compression stem units  
Replaceable reinforced nitrile rubber packing  
Replaceable Buna-N seat washers  
4" PVD chrome wrist blade handles  
Equipped with water saving aerator  
Certified by IAPMO R&T to:

- \* NSF/ANSI 61- 2010a
- \* NSF/ANSI 61- Annex G
- \* Low Lead
- \* ANSI A112.18.1 / CSA B125.1
- \* UPC
- \* IPC
- \* ADA Compliant



## FINISH

PVD chrome

## FLOW RATE

2.2 GPM flow restricting aerator

## A.D.A. COMPLIANCE

Yes

## VARIANTS

J-1174-KS = J-1174-R w/ Swiveling spout

JUST MFG. COMPANY CONTINUES TO MAKE QUALITY AND FUNCTIONALITY A MARK OF THE JUST PRODUCT LINE. TO DO SO REQUIRES THAT WE RESERVE THE RIGHT TO CHANGE PRODUCT INFORMATION WITHOUT NOTICE. DIMENSIONS MAY VARY AND ARE SUBJECT TO CHANGE WITHOUT NOTICE. NO RESPONSIBILITY IS ASSUMED FOR USE OF SUPERCEDED OR VOIDED DATA. FOR THE MOST CURRENT AND ACCURATE INFORMATION REGARDING THE COMPLETE LINE OF JUST SINKS, FAUCETS AND DRAINS, CLICK ON THE **SPEC LINE DRAWINGS** LINK ON OUR WEB SITE AT [www.justmfg.com](http://www.justmfg.com)

## OPTIONS

### HANDLES

6" Wrist Blades "W6"  
Canopy Type "C" (not ADA)  
Acrylic "P" (not ADA)

### AERATOR

Duo Stream Swivel "B"  
Rose Spray "J-RS"

### VANDAL RESISTANT

Aerator "VR-A"  
Handles "VR-H"

Job Name \_\_\_\_\_  
Customer \_\_\_\_\_  
Architect/Engineer \_\_\_\_\_

### APPROVED FOR MANUFACTURING

Model No. \_\_\_\_\_ Qty. \_\_\_\_\_  
Company \_\_\_\_\_  
Title \_\_\_\_\_ Date \_\_\_\_\_  
SIGNATURE \_\_\_\_\_

REVISED - 2013

## JUST MANUFACTURING COMPANY

9233 KING STREET . FRANKLIN PARK . ILLINOIS . 60131-2111

PH: 847-678-5150 . FAX: 847-678-6817

E-MAIL: [custserv@justmfg.com](mailto:custserv@justmfg.com) . [www.justmfg.com](http://www.justmfg.com)

J1174R

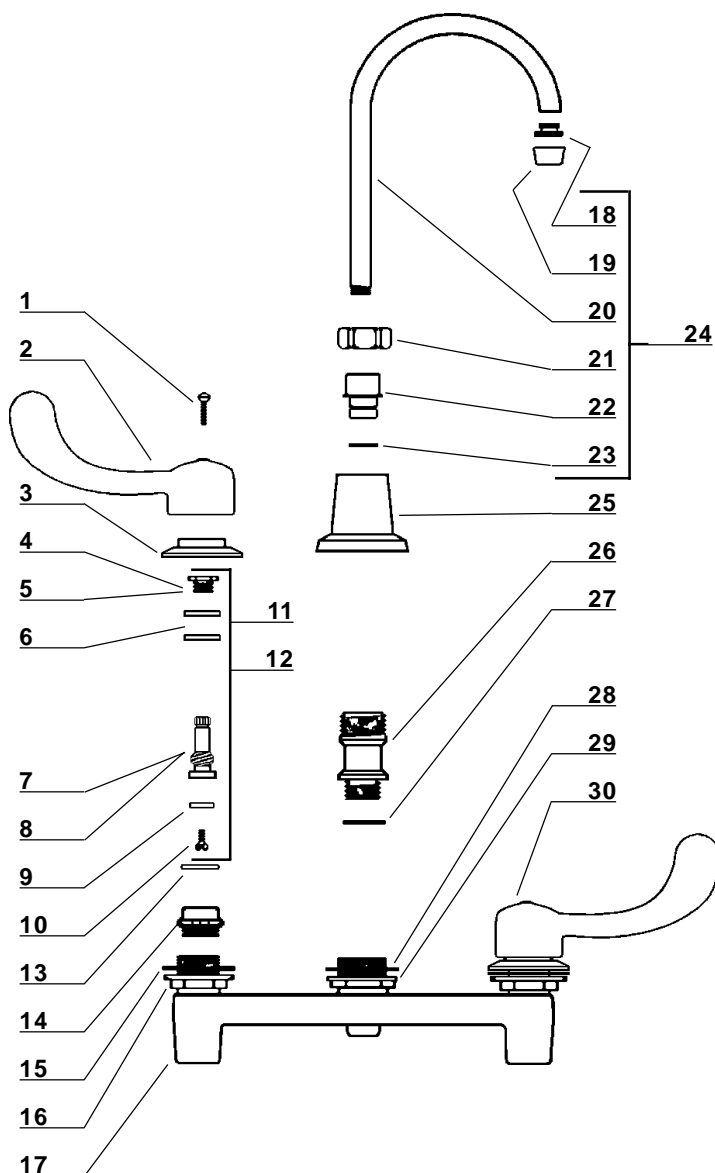
SUBMITTAL DATA

J-1174-R



## FAUCET GROUP

### CONCEALED LEDGEMOUNT



Item No.	Part No.	Description
1	107-F	Handle Screw
2	4147	Blade Handle - 4"
3	524	Escutcheon
4	454-EC	Bonnet ( Cold Side )
5	454-EH	Bonnet ( Hot Side )
6	1038-453	O-Ring
7	454-FL	Stem ( Cold Side )
8	454-FR	Stem ( Hot Side )
9	901-WN	Seat Washer
10	104	Seat Washer Screw
11	SU-454-EL	Stem Sub-assembly (Cold)
12	SU-454-ER	Stem Sub-assembly (Hot)
13	1028-Y	Gasket
14	263-C	Replaceable Seat
15	491-U	Corner Gasket
16	53-AS	Locknut
17	1959-J	Body
18	PF-166-U	Adapter
19	30-M	Aerator
20	PF-157-K	Gooseneck Spout
21	PF-157-JES	Rigid Spout Nut
22	PF-741-DO	Adaptor
23	1038-K	"O" Ring
24	SU-157-KRA	Gooseneck Swing Spout Assy.
25	1012-N	Escutcheon
26	2985-J	Centerpiece
27	402-J	Washer
28	491-S	Gasket
29	53-BS	Locknut
30	W4	Blade Handle - 4"

JUST MFG. COMPANY CONTINUES TO MAKE QUALITY AND FUNCTIONALITY A MARK OF THE JUST PRODUCT LINE. TO DO SO REQUIRES THAT WE RESERVE THE RIGHT TO CHANGE PRODUCT INFORMATION WITHOUT NOTICE. DIMENSIONS MAY VARY AND ARE SUBJECT TO CHANGE WITHOUT NOTICE. NO RESPONSIBILITY IS ASSUMED FOR USE OF SUPERCEDED OR VOIDED DATA. FOR THE MOST CURRENT AND ACCURATE INFORMATION REGARDING THE COMPLETE LINE OF JUST SINKS, FAUCETS AND DRAINS, CLICK ON THE **SPEC LINE DRAWINGS** LINK ON OUR WEB SITE AT [www.justmfg.com](http://www.justmfg.com)

### JUST MANUFACTURING COMPANY

9233 KING STREET, FRANKLIN PARK, ILLINOIS, 60131-2111

PH: 847-678-5150 . FAX: 847-678-6817

E-MAIL: [custserv@justmfg.com](mailto:custserv@justmfg.com) . [www.justmfg.com](http://www.justmfg.com)