

DRYCONN®

WATERPROOF CONNECTORS

Filled Connectors For Low Voltage Use

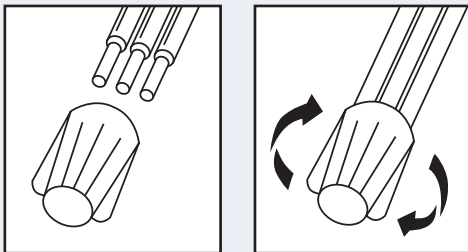


Installation Instructions

IMPORTANT: Turn off power before installing or removing connector.

Product to be used in accordance with local and national codes.

1. Strip wires 3/8" (9.5mm) except #16 and smaller. Strip wires 7/16" (11.1 mm).
2. Pre-twisting is unnecessary. Hold stripped wires together with ends of insulation even. Lead stranded wires slightly.
3. Align any frayed strands or conductors.
4. Firmly push wire into connector and screw connector clockwise onto wire until tight. Do not reuse.



See reverse side for a complete listing of wire combinations.

DryConn® Blue/Blue

Catalog #	Selling Unit
10222	Bag of 20
10241	Canister of 100

PRODUCT SPECIFICATIONS & MEASUREMENTS

Max. Voltage: 600V (1,000V in fixtures and signs)

Connector Size: 17/32" x 15/16"

Wire Type: Copper/Copper

Wire Range: Min #22/Max #12

Temperature Rating: 105°C (221°F)

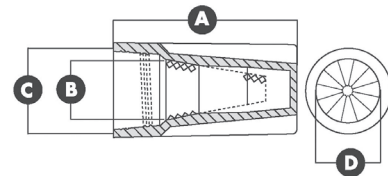
Silicone Sealant: -45°F to 400°F

UL Designation: KYN

Measurements (Inches):

A - 0.932 B - 0.260

C - 0.539 D - 0.422



- UL listed and CSA certified as a Pressure Type Connector

Suitable for all low voltage applications.

Filled Connectors For Low Voltage Use

600V Wire Combinations

1 #8 Str.	1 #10	1-3 #12
1-4 #14	2-5 #16	3-6 #20
1 #10 w/1 #12	1 #10 w/1-2 #14, 16 or 18	1 #10 w/3-4 #16 or 18
1 #12 w/1 -2 #14	1 #12 w/1-4 #16 or 18	2 #12 w/1 #14
2 #12 w/1-2 #16 or 18	1 #14 w/1-4 #16, 18 or 20	2 #14 w/1-3 #16, 18 or 20
3 #14 w/1 #16	3 #14 w/1-2 #18 or 20	1 #16 w/1-4 #18 or 20
1 #16 w/2-4 #22	2 #16 w/1-3 #18, 20 or 22	3 #16 w/1-2 #18, 20 or 22
4 #16 w/1-2 #18, 20 or 22	1 #18 w/3-4 #20 or 22	2 #18 w/3 #20 or 22
1 #10 w/1 #12 w/1 #14 or 16	1 #10 w/1 #12 w/1-2 #18	1 #10 w/1 #14 w/2 #16
1 #10 w/1 #14 w/1-3 #18	1 #10 w/2 #14 w/1 #16	1 #10 w/1 #16 w/1-2 #18
1 #12 w/1 #14 w/2 #16	2 #12 w/1 #14 w/1 #16 or 18	2 #12 w/1 #16 w/1-2 #18
1 #14 w/1 #16 w/1-3 #20	1 #14 w/1 #18 w/1-3 #20	2 #14 w/1 #16 w/1-2 #18 or 20
2 #14 w/1 #16 w/1-3 #22	3 #14 w/1 #16 w/1 #18, 20 or 22	3 #14 w/1 #18 w/1 #20 or 22
1 #16 w/1 #18 w/2-3 #20 or 22	1 #16 w/1 #18 w/3-4 #22	1 #16 w/2 #20 w/2 #22
2 #16 w/1 #18 w/1-2 #20 or 22	3 #16 w/1 #18 w/1 #20 or 22	1 #18 w/2 #20 w/3 #22
2 #18 w/1 #20 w/3 #22	2-5 #18	

Weights and Measures

Shelfpack Qty.	Part #	Wt.	W	H	L	Cube	Master Qty.	Weight	W	H	L	Cube	UPC 7-19362
10 bags	10222	1.50	9	3.5	5.75	0.1048	100	18.12	9.75	7.5	28.5	1.21	10222-1
6 canisters	10241	5.06	3.5	5.25	20.75	.22	N/A	N/A	N/A	N/A	N/A	N/A	10241-2

In the chart above, width, height, and length are represented in inches. Weight is represented as pounds.