



**JAY R. SMITH MFG. CO.**  
 MEMBER OF MORRIS GROUP INTERNATIONAL  
 POST OFFICE BOX 3237  
 MONTGOMERY, ALABAMA 36109-0237 (USA)  
 TEL: 334-277-8520 FAX: 334-272-7396 www.jrsmith.com



**LOCATION**

DRAWING NUMBER  
**S4240BS**

SIZE  
**A**

SCALE:  
**NONE**

DATE:  
**5-5-06**

APPROVED BY:  
**CEL**

CHECKED BY:  
**CL**

DRAWN BY:  
**RN**

**4243**

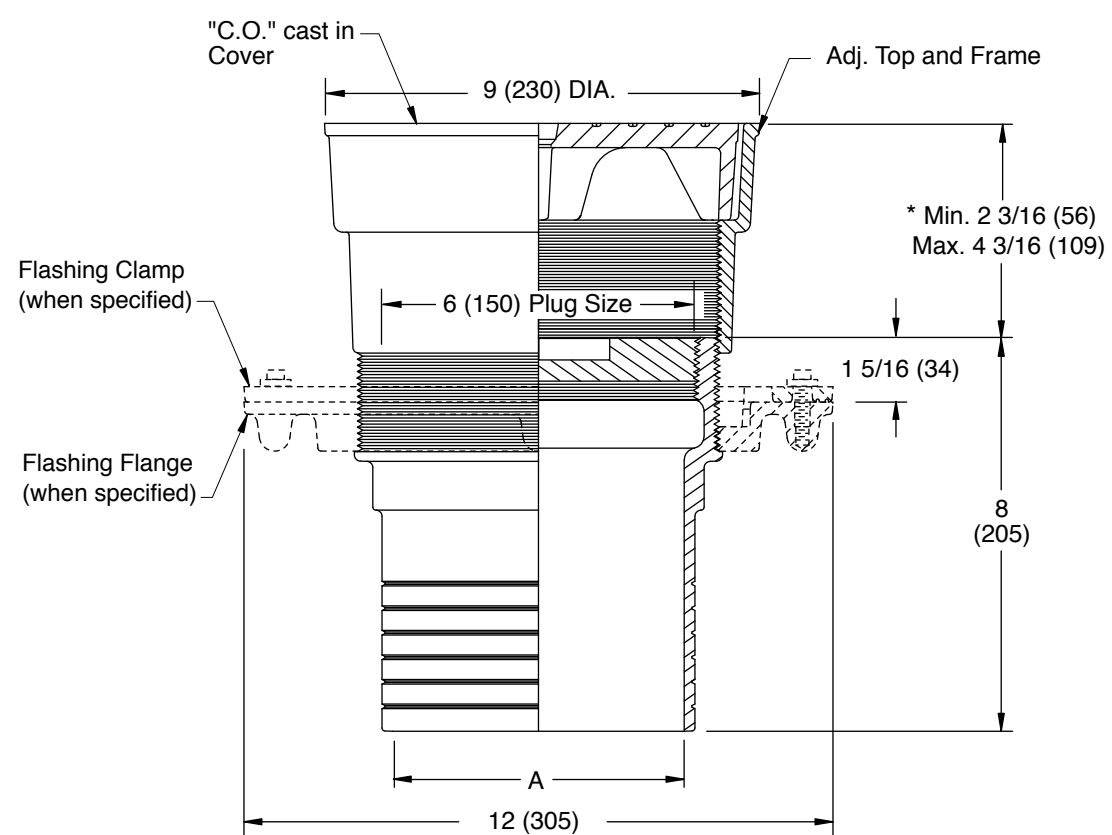
FIGURE NUMBER

WE CAN ASSUME NO RESPONSIBILITY FOR USE OF SUPERSEDED OR VOID DATA

# FLOOR CLEANOUTS WITH "TWIS-TO-FLOOR®" ADJUSTABLE TOPS FOR UNFINISHED AREAS

## ROUND CAST IRON TOP - TRACTOR COVER

**FUNCTION:** Use in unfinished areas where a loose set, non-tilt tractor cover is desired. Will withstand heavy load traffic.



### SPIGOT OUTLET ▲

"A" (Pipe Size) = 06(150) & 08(200)

▲ Sized for Service Weight and/or NO-HUB.  
 \* When Flange-F is specified Min. 2 3/16 (56) becomes 2 11/16 (68)

### "TWIS-TO-FLOOR®" ADJUSTMENT

#### SPIGOT OUTLET ▲

☐ Fig. 4243S.....Taper Thread - Bronze Plug

**REGULARLY FURNISHED:**  
 Duco Cast Iron Cleanout with Taper Thread Bronze Plug and Round Adjustable Scoriated Cast Iron Top with Non-Tilt Tractor Cover.

#### VARIATIONS:

- ☐ Flashing Flange -F
- ☐ Flange with Flashing Clamp -F-C
- ☐ Vandal Proof Top -U
- ☐ Center Securing Screw -CSS

#### OPTIONAL MATERIALS:

- ☐ Galvanized Cast Iron -G
- ☐ Polished Bronze Top -PB
- ☐ Nickel Bronze Top -NB
- ☐ Ductile Iron Cover -M

**NOTE:** Dimensions shown in parentheses are in millimeters.

REV.	DATE	DESCRIPTION	BY	CKD. BY

WEIGHT POUNDS	VOLUME CUBIC FEET

**FIGURE NUMBER**  
**4243**