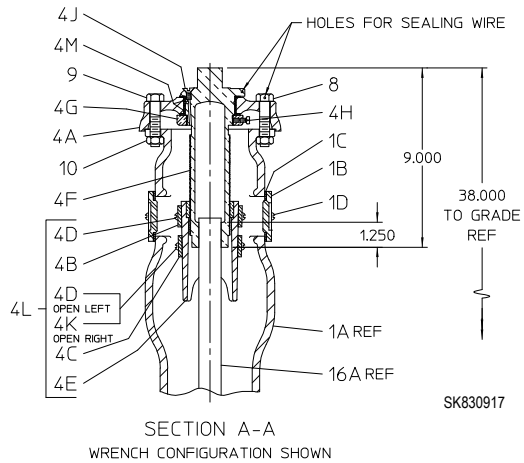
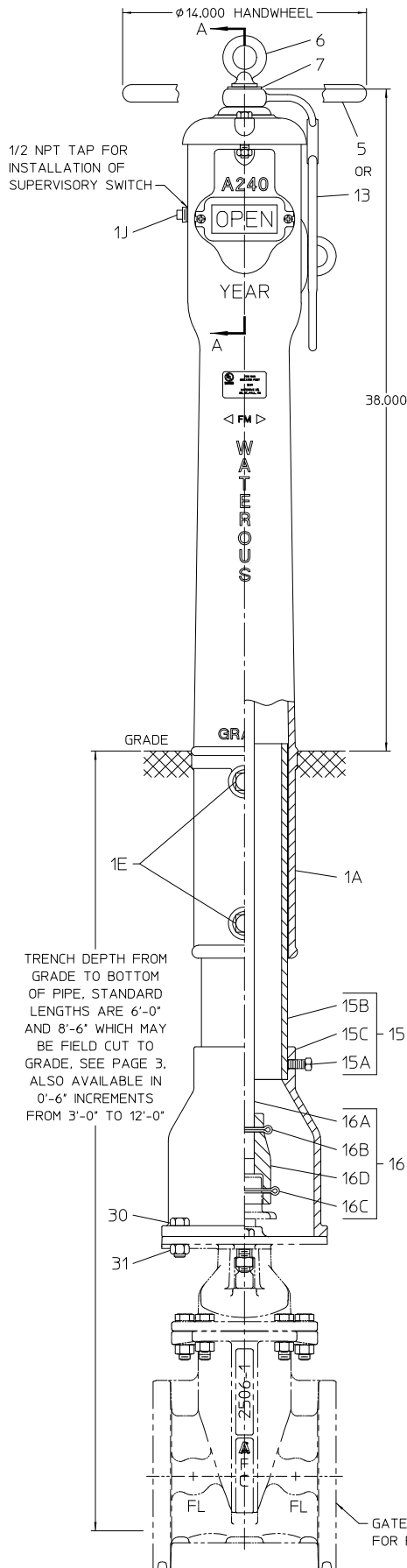


AMERICAN Flow Control Submittal Information

WATEROUS MODEL A240 POST INDICATOR



Open Direction: Left (C.C.W.) Right (C.W.)

NOTES:

1. UL Listed and FM Approved.
2. When ordering a complete post or repair parts, please specify valve size post is to be used with. Posts used with 14" thru 18" valves use a different indicator slide (Ref No. 4E) and indicator screw (Ref No. 4F) than posts used on 2" thru 12" valves.
3. Recommended maintenance: Exercise through complete OPEN-CLOSE-OPEN cycle once per month. Lubricate through screw 4J once per year with SAE 10W or comparable non-detergent oil.
4. The hardware used to mount the post to the valve (Ref No.'s 30 & 31) is optional. Specify loose installation parts kit L-1033 if required.
5. Eyebolt (Ref No. 6) and washer (Ref No. 7) are used with handwheel (Ref No. 5) only.
6. Hex head bolt (Ref No. 32) is used with wrench (Ref No. 13) only.
7. Ref No. 4K screw is used on open right posts only.



AMERICAN
FLOW CONTROL

THE RIGHT WAY

AMERICAN Flow Control
P.O. Box 2727
Birmingham, Al. 35202-2727
Phone: 1-800-326-8051
Fax: 1-800-610-3569
E-mail: afcsales@american-usa.com

Waterous Company
125 Hardman Avenue South
South St. Paul, Mn. 55075-1191
Phone: 1-888-266-3686
Fax: 1-800-601-2809
E-mail: afcsales@american-usa.com

WWW.AMERICAN-USA.COM

REF NO.	DESCRIPTION	MATERIAL	QTY
1	Post and Window Assembly	Includes 1A thru 1J	1
1A	Post	Cast Iron, ASTM A126, Class B	1
1B	Window	Molded Clear Polycarbonate	2
1C	Window Gasket	Synthetic Fibre with Elastomeric Binder	2
1D	Rnd Head Screw, 1/4-20 x 1/2"	Stainless Steel, Type 18-8, ASTM F593, Group 1 (304)	4
1E	Sq Head Set Screw, 3/4-10 x 1-1/2"	Steel, SAE Grade 2, ASTM A307	2
1J	Pipe Plug, 1/2 NPT	Steel, SAE Grade 2, Galvanized	1
4	Cover Assembly	Includes 4A thru 4M	1
4A	Cover	Cast Iron, ASTM A126, Class B	1
4B	Open Plate	Aluminum, ASTM B26-80, ANSI Alloy 319, UNS A03190	2
4C	Shut Plate	Aluminum, ASTM B26-80, ANSI Alloy 319, UNS A03190	2
4D	Rnd Head Screw, 1/4-20 x 1/2"	Steel, SAE Grade 2, ASTM A307, Zinc Plated	8
4E	Indicator Slide	Silicon Bronze, ASTM B584, UNS C87600	1
4F	Indicator Screw	Cast Bronze, ASTM B584, UNS C84400	1
4G	Lock Nut	Bronze, ASTM B62, Copper Alloy C83600	1
4H	Sq Head Set Screw, 1/4-20 x 3/4"	Stainless Steel, Type 18-8, ASTM F593, Group 1 (304)	1
4J	Flat Head Screw, #10-24 x 1/2"	Stainless Steel, Type 18-8, ASTM F593, Group 1 (304)	1
4K	Rnd Head Screw, 1/4-20 x 1"	Steel, SAE Grade 2, ASTM A307, Zinc Plated	4
4L	Indicator Sub-Assembly	Includes 4B, 4C, 4D, 4E & 4K	1
4M	Cover Bushing	Brass, ASTM B36, UNS C26000	2
5	Handwheel	Cast Iron, ASTM A126, Class B	1
6	Eye Bolt, 5/8-11	Steel, SAE Grade 2, ASTM A307	1
7	Flat Washer	Aluminum, 2024-T4, ASTM B209M	1
8	Hex Head Bolt, 1/2-13 x 2-1/2"	Steel, SAE Grade 2, ASTM A307, Zinc Plated	1
9	Hex Head Bolt, 1/2-13 x 2-1/2"	Steel, SAE Grade 2, ASTM A307, Zinc Plated	1
10	Hex Nut, 1/2-13	Steel, SAE Grade 2, ASTM A307, Zinc Plated	2
13	Wrench	Ductile Iron, ASTM A536, UNS F33100	1
15	Bottom Assembly	Includes 15A, 15B & 15C	1
15A	Sq Head Set Screw, 1/2-13 x 1"	Stainless Steel, Type 18-8, ASTM F593, Group 1 (304)	3
15B	Pipe	Cast Ductile Iron, ANSI A21.51 (AWWA C151)	1
15C	Butt	Cast Iron, ASTM A126, Class B	1
16	Rod Assembly	Includes 16A, 16B, 16C & 16D	1
16A	Rod, 1" Square	Steel, ASTM A576, Grade 1045, UNS G10450	1
16B	Cotter Pin, 1/4 x 3"	Brass, ASTM B134	1
16C	Cotter Pin, 1/4 x 3-3/4"	Brass, ASTM B134	1
16D	Coupling (A286)	Cast Iron, ASTM A126, Class B	1
30	Hex Head Bolt, 5/8-11 x 2-1/2"	Stainless Steel, Type 18-8, ASTM F593, Group 1 (304)	4
31	Hex Nut, 5/8-11	Stainless Steel, Type 18-8, ASTM F594, Group 1 (304)	4
32	Hex Head Bolt, 5/8-11 x 1"	Stainless Steel, Type 18-8, ASTM F593, Group 1 (304)	1



AMERICAN
FLOW CONTROL

THE RIGHT WAY

AMERICAN Flow Control
P.O. Box 2727
Birmingham, Al. 35202-2727
Phone: 1-800-326-8051
Fax: 1-800-610-3569
E-mail: afcsales@american-usa.com

Waterous Company
125 Hardman Avenue South
South St. Paul, Mn. 55075-1191
Phone: 1-888-266-3686
Fax: 1-800-601-2809
E-mail: afcsales@american-usa.com

WWW.AMERICAN-USA.COM

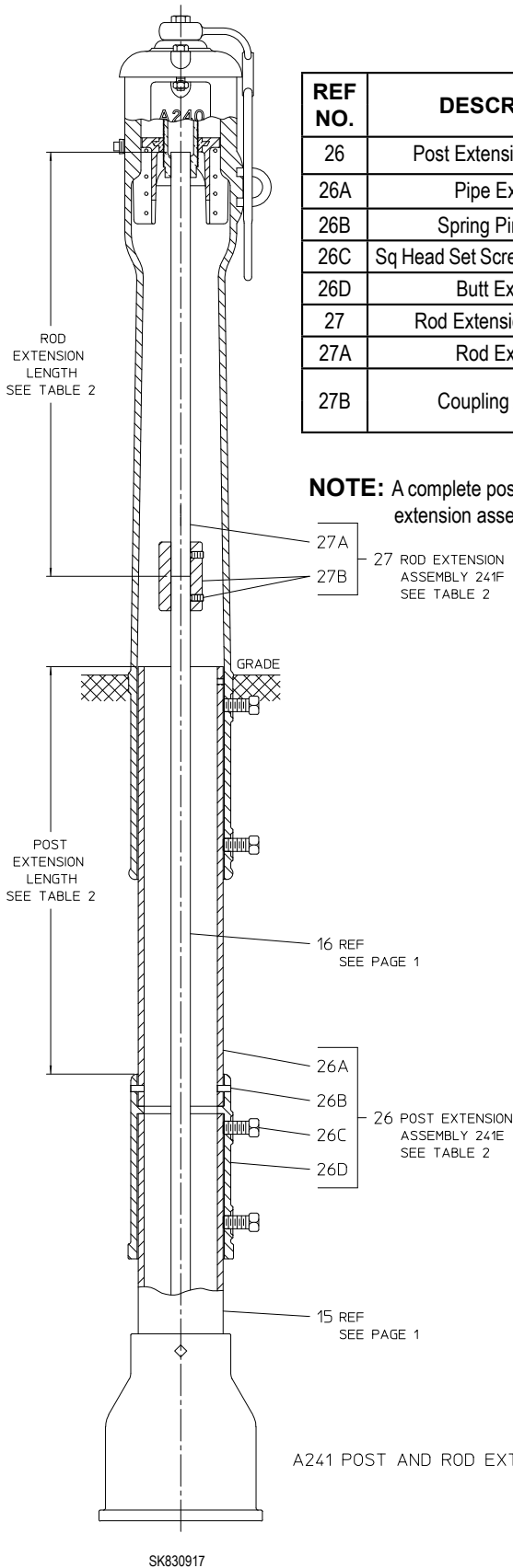
TABLE 1

REF NO.	DESCRIPTION	MATERIAL	QTY	
			241E	241F
26	Post Extension Assembly	Includes 26A thru 26D	1	-
26A	Pipe Extension	Cast Ductile Iron, ANSI A21.51 (AWWA C151)	1	-
26B	Spring Pin, 3/8 x 1"	Stainless Steel, Type 403	4	-
26C	Sq Head Set Screw, 3/4-10 x 1-1/2"	Steel, SAE Grade 2, ASTM A307, Zinc Plated	2	-
26D	Butt Extension	Cast Iron, ASTM A126, Class B	1	-
27	Rod Extension Assembly	Includes 27A & 27B	-	1
27A	Rod Extension	Steel, ASTM A576, Grade 1045, UNS G10450	-	1
27B	Coupling Assembly	Coupling: Cast Iron, ASTM A126, Class B	-	1
		Set Screw: Steel, SAE Grade 2, ASTM A307, Zinc Plated	-	2

NOTE: A complete post indicator extension consists of one post extension assembly (Example: A241E10) and one rod extension assembly (Example: A241F10).

TABLE 2

EXTENSION LENGTH	POST EXTENSION ASSEMBLY	ROD EXTENSION ASSEMBLY
1'-0"	241E10	241F10
1'-6"	241E16	241F16
2'-0"	241E20	241F20
2'-6"	241E26	241F26
3'-0"	241E30	241F30
3'-6"	241E36	241F36
4'-0"	241E40	241F40
4'-6"	241E46	241F46
5'-0"	241E50	241F50
5'-6"	241E56	241F56
6'-0"	241E60	241F60
6'-6"	241E66	241F66
7'-0"	241E70	241F70
7'-6"	241E76	241F76
8'-0"	241E80	241F80
8'-6"	241E86	241F86
9'-0"	241E90	241F90



A241 POST AND ROD EXTENSION ASSEMBLIES



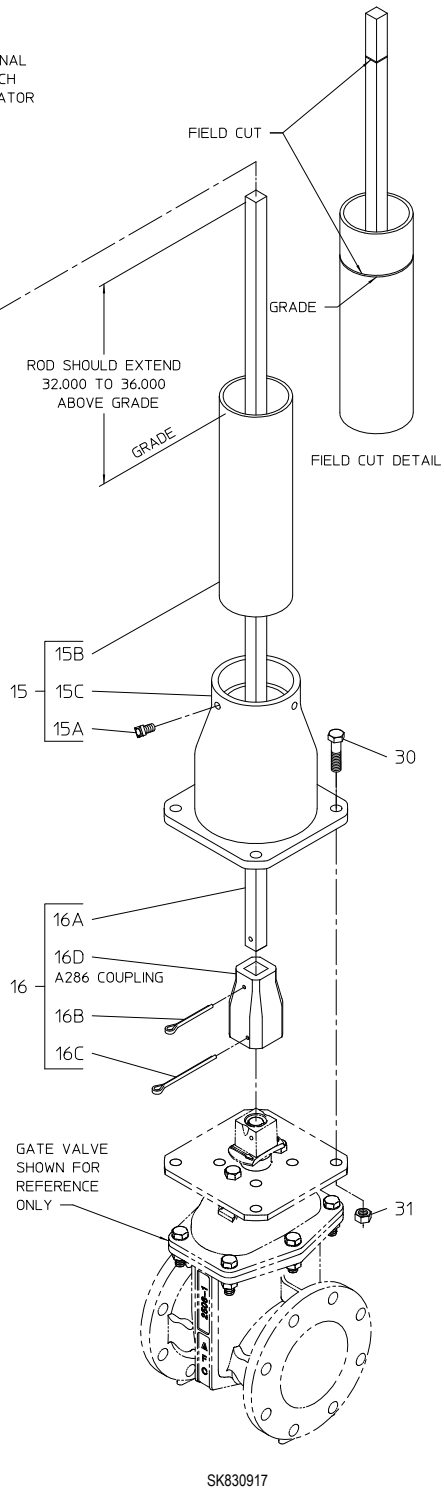
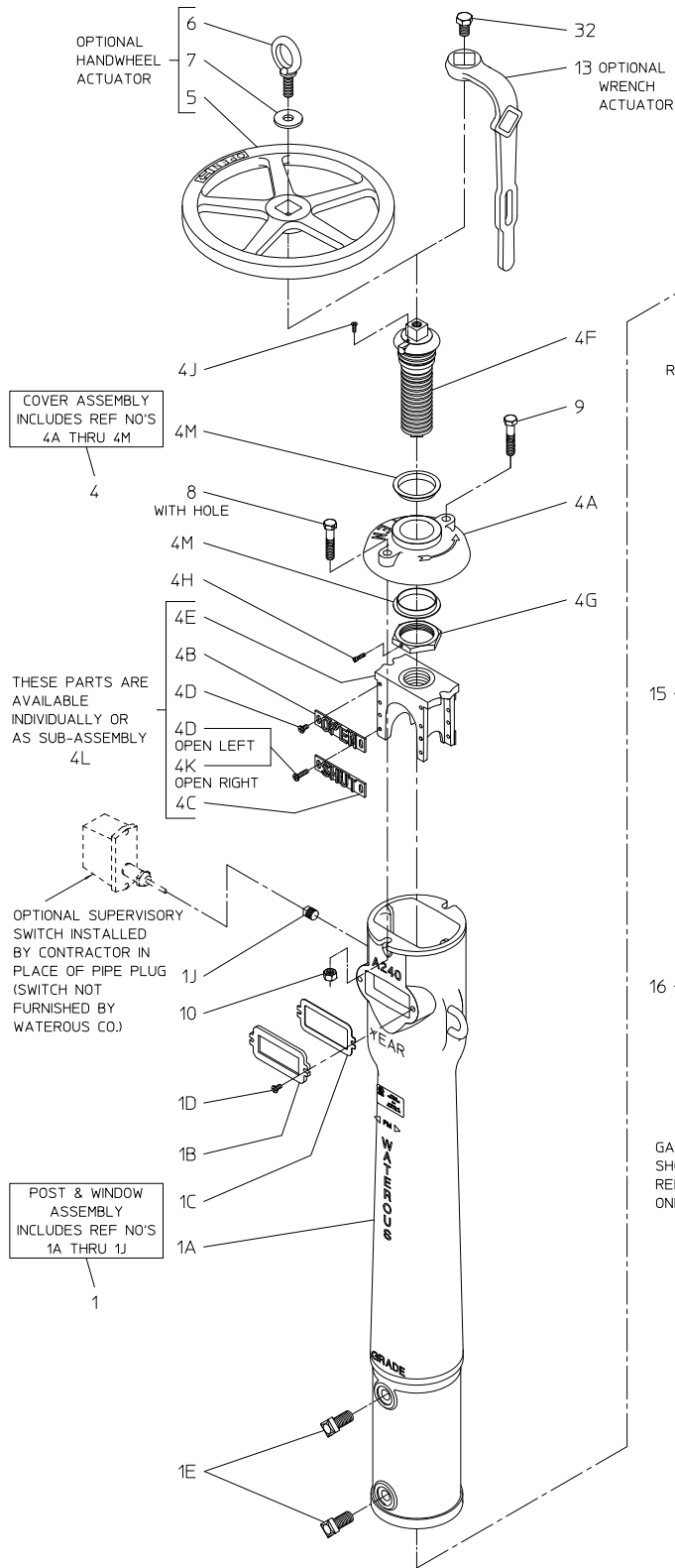
AMERICAN
FLOW CONTROL

THE RIGHT WAY

AMERICAN Flow Control
P.O. Box 2727
Birmingham, Al. 35202-2727
Phone: 1-800-326-8051
Fax: 1-800-610-3569
E-mail: afcsales@american-usa.com

Waterous Company
125 Hardman Avenue South
South St. Paul, Mn. 55075-1191
Phone: 1-888-266-3686
Fax: 1-800-601-2809
E-mail: afcsales@american-usa.com

WWW.AMERICAN-USA.COM



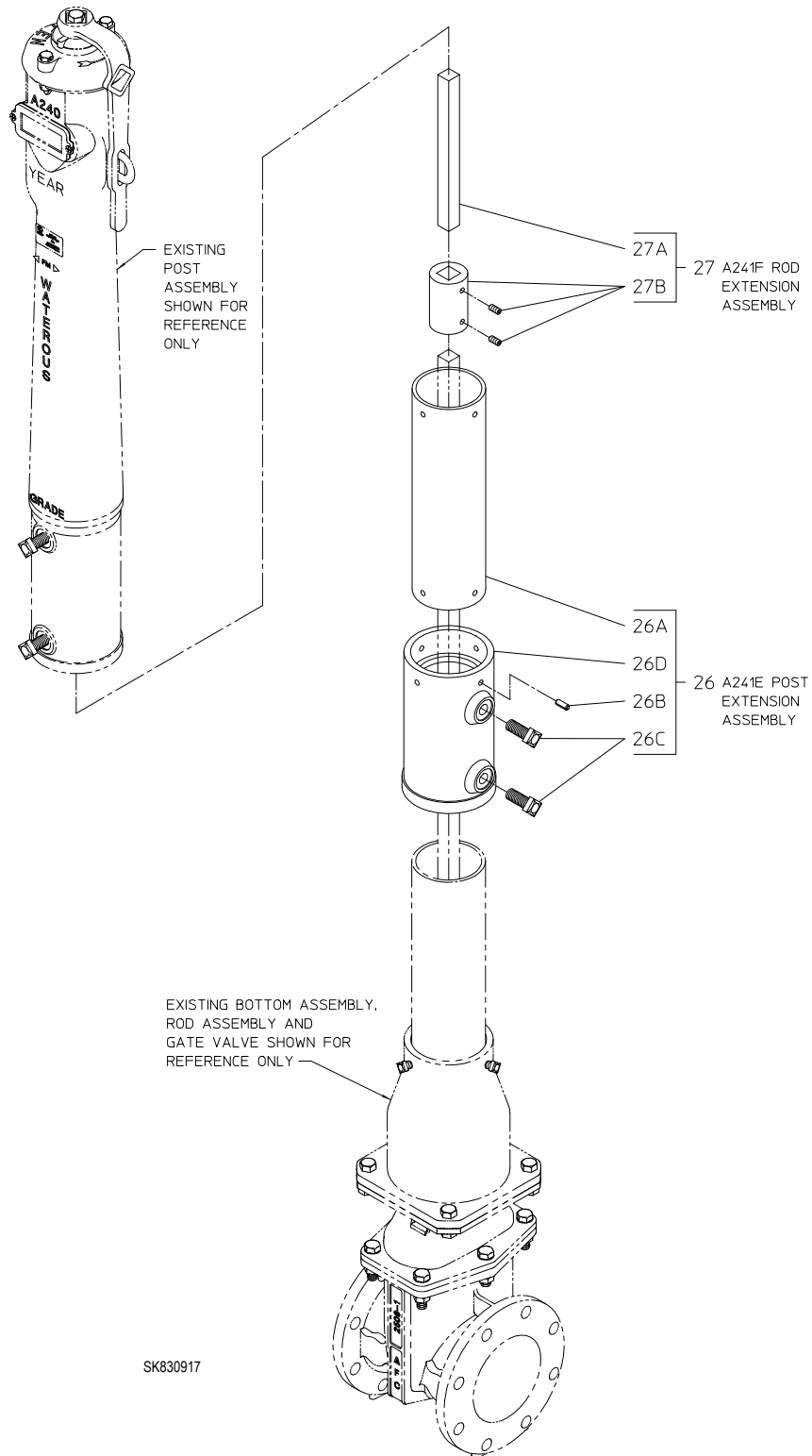
AMERICAN
FLOW CONTROL

THE RIGHT WAY

AMERICAN Flow Control
P.O. Box 2727
Birmingham, Al. 35202-2727
Phone: 1-800-326-8051
Fax: 1-800-610-3569
E-mail: afcsales@american-usa.com

Waterous Company
125 Hardman Avenue South
South St. Paul, Mn. 55075-1191
Phone: 1-888-266-3686
Fax: 1-800-601-2809
E-mail: afcsales@american-usa.com

WWW.AMERICAN-USA.COM



A241 POST AND ROD EXTENSION ASSEMBLIES



AMERICAN
FLOW CONTROL

THE RIGHT WAY

AMERICAN Flow Control
P.O. Box 2727
Birmingham, Al. 35202-2727
Phone: 1-800-326-8051
Fax: 1-800-610-3569
E-mail: afcsales@american-usa.com

Waterous Company
125 Hardman Avenue South
South St. Paul, Mn. 55075-1191
Phone: 1-888-266-3686
Fax: 1-800-601-2809
E-mail: afcsales@american-usa.com

WWW.AMERICAN-USA.COM