

# TRENCH TOUGH PLUS™

## SDR26 HEAVY WALL GASKETED SEWER FITTINGS

- Compatible with SDR26 and SDR35 sewer pipe and are used in areas where the installation conditions are more challenging, such as deep burial applications or projects in poor soils.
- Service fittings are manufactured with an "extra heavy wall" SDR24 thickness.
- Easily identifiable with its gray gaskets.

Injection  
Molded  
4" – 12"

Fabricated  
12" – 24"



### NEW MOLDED GASKETED SDR26 HEAVY WALL SEWER FITTINGS

Product	Size (inches)	Size (mm)	Old Part #	NEW Part #
T-Y (GXGXG)	10 x 4	250 x 100	067130	167130
	10 x 6	250 x 150	067150	167150
	12 x 4	300 x 100	067153	167153
	12 x 6	300 x 150	067152	167152

## Short Form Specification

All sewer fittings shall comply with the ASTM D3034 and ASTM F1336 standards. Fittings marked with IAPMO are approved to the requirements of D3034 and are third party certified to CSA, B182.1 and marked with the CSA logo.

Fitting joints must withstand a minimum 15 psi hydrostatic pressure and a -10.8 psi vacuum pressure for at least 10 minutes with no leakage while joint is deflected 5° and ring deflection is 5%.

Impact testing is carried out at 73°F with no cracking or splitting allowed.

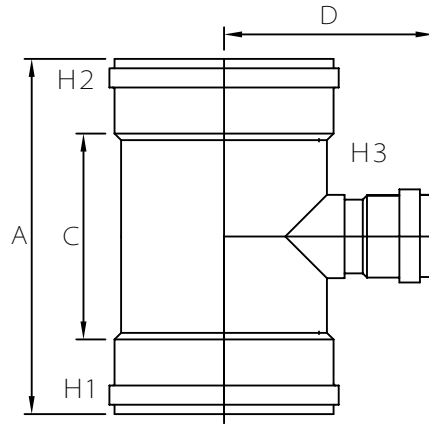


MULTI FITTINGS

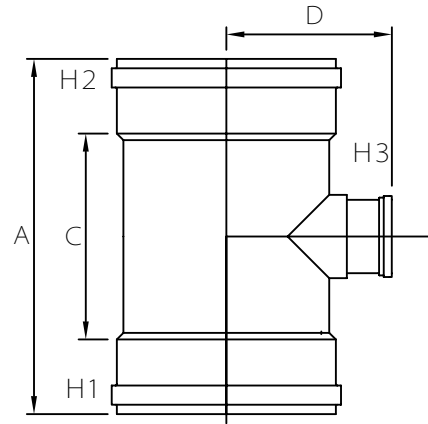
# LAYING LENGTH

ISSUE DATE: OCT 30/17  
SUPERCEDES: SEPT 14/07

## TEE (GxGxG)



FABRICATED FITTING (F)



FABRICATED FITTING (F1)

	SIZE H1xH2xH3	PART NUMBER	A REF	C REF	D REF
F1 @	15x15x10	067073	39.000	-	17.000
F1 @	15x15x12	067074	39.000	-	18.000
F @	15x15x15	067038	45.000	-	19.000
F @	18x18x4	067039	43.000	-	13.500
F @	18x18x6	067061	43.000	-	14.500
F @	18x18x8	067067	43.000	-	15.000
F @	18x18x10	067068	46.000	-	19.500
F @	18x18x12	067069	46.000	-	19.000
F @	18x18x15	067033	44.000	-	22.000
F @	18x18x18	067034	51.000	-	24.000

Note: = Refer to Page HW4 for Hub Detail, Type A  
 @ Refer to Page HW5 for Hub Detail, Fabricated  
 F1 has Molded hub in branch