

## ONLY ONE COMPANY MAKES 10" & 15" INJECTION MOLDED GASKETED SEWER FITTINGS



Multi Fittings is the only manufacturer to offer gasketed 12" and 15" SDR 35 molded sewer fittings in a range of wyes, tees and elbows.

Ideal for wastewater and stormwater applications, as well as the conveyance of industrial wastes, our large diameter molded sewer fittings are designed to exceed all applicable standards and are built to withstand higher impact forces, higher loads and survive the roughest jobsite handling. The impact strength of our sewer fittings exceed the requirements of ASTM F1336 by at least 25%.

For over 50 years, Multi Fittings has been an industry leader in offering the most comprehensively engineered and tested fittings for plastic pipe in North America.

Multi Fittings produces the widest range of injection molded fittings for pressurized watermains and sewer forcemains, gravity flow sewers and drain, waste and vent applications.

### TRENCH TOUGH PLUS™

#### SIZES

4" & 15"

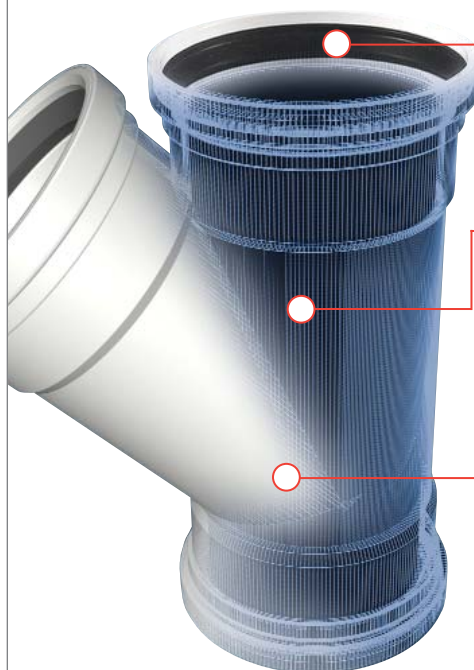


#### MULTI FITTINGS

Telephone: 519 681-2140

Toll Free: 800 265-1815

Fax: 519 681-2156



#### Locked-in Gasket Design

Makes assembling the joints easy, requiring less brute force in the trench, while ensuring leak-proof reliability in the ground.

#### Advanced Material Formulation

Leading crush-resistance, yet our fittings can flex to accommodate the extreme loads that cause rigid fittings to fail.

#### Structural Reinforcements

Reinforced at key intersecting locations where it's needed for added strength without losing flexibility.

*more information on back* ►

## FEATURES & BENEFITS

### Easy to Install

Lightweight and easy to handle; with the patented Trench Tough Plus locked-in gasket design.

### Joint Strength

Manufactured to allow for a high degree of joint deflection, reducing the risks caused by soil settlement or shifting.

### Structural Strength

Leads the industry in crush-resistance and able to handle extreme loads underground.

### Impact Strength

Designed to withstand the rigors of the job site, exceeding ASTM impact standards.



Telephone: 519 681-2140  
Toll Free: 800 265-1815  
Fax: 519 681-2156

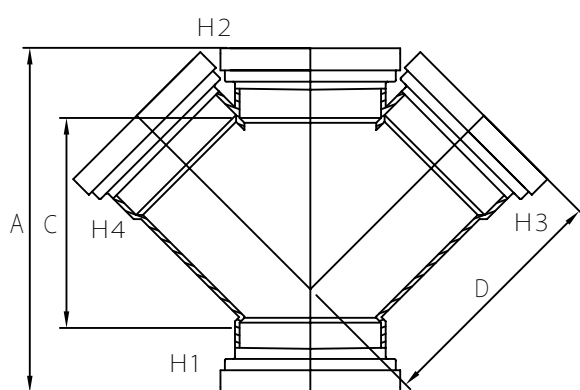


MULTI FITTINGS

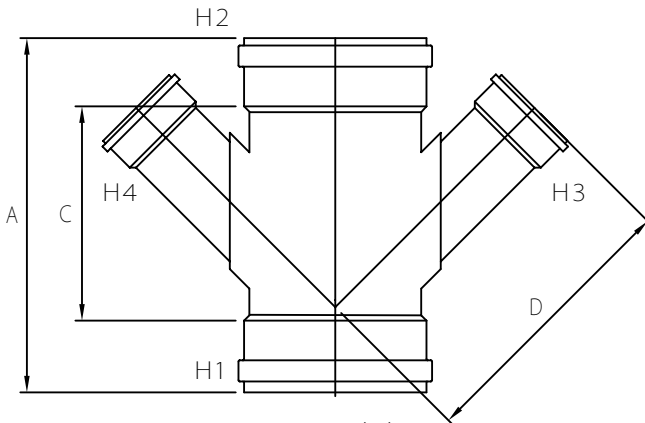
# LAYING LENGTH

ISSUE DATE: OCT 30/17  
SUPERCEDES: SEPT 14/07

## DOUBLE 45 ° WYE (GxGxGxG)



INJECTION MOLDED FITTING (M)



FABRICATED FITTING (F)

	SIZE H1xH2xH3xH4	PART NUMBER	A REF	C REF	D REF
M =	6x6x4x4	067207	15.000	9.125	8.875
M =	6x6x6x6	067277	15.000	9.125	10.875
F	8x8x4x4	067278	-	-	-
F	8x8x6x6	067279	-	-	-
F	8x8x8x8	067281	-	-	-
F	10x10x4x4	067282	-	-	-
P	10x10x6x6	067280	-	-	-
F	10x10x8x8	067283	-	-	-
F	10x10x10x10	067284	-	-	-
P	12x12x4x4	067285	-	-	-
F @	12x12x6x6	067286	30.000	-	19.500
F	12x12x8x8	067287	-	-	-
F @	12x12x10x10	067289	36.000	-	24.000
F	12x12x12x12	067290	-	-	-
P	15x15x4x4	067291	-	-	-
P	15x15x6x6	067292	-	-	-
P	15x15x8x8	067293	-	-	-
P	15x15x10x10	067294	-	-	-
F @	15x15x12x12	067295	45.000	-	29.000
++F @	15x15x15x15	067296	47.000	-	34.000
P	18x18x4x4	067297	-	-	-
P	18x18x6x6	067298	-	-	-
P	18x18x8x8	067299	-	-	-

Note: = Refer to Page HW4 for Hub Detail, Type A  
@ Refer to Page HW5 for Hub Detail, Fabricated  
++ FRP Reinforced