

SOLVENT WELD SEWER FITTINGS



SIZES

Injection Molded
3" – 8"

Fabricated Molded
8" – 15"

Multi Fittings offers a wide variety of molded sewer fittings 3" in diameter and larger. Solvent welded fittings are typically installed in sanitary and drainage systems. Injection-molded fittings are available in 3" to 8". Fabricated SDR35 solvent weld sewer fittings are available in 8" to 15".

Solvent Weld vs. Gasketed Joints

Solvent welding is a process by which a joint is made by chemically fusing together a pipe and a fitting. A solvent is applied to the surface of a PVC pipe spigot and the inside of a matching bell. In some cases a primer may be used to prepare the surfaces. The solvent dissolves some of the chemical bonds in the PVC material, effectively "melting" the material. Once the two surfaces are pushed together the material from the two surfaces begins to fuse together. As the joint cures the solvent evaporates and the joint becomes stronger, until it essentially becomes a continuous pipe.

Solvent welded joints are able to resist large tensile loads and will not pull apart. In fact, it can be shown that the pipe itself will fail before the joint will.

Available Configurations

Multi Fittings has one of the largest offerings of molded sewer fittings 3" and larger. For a complete list and for engineering lay lengths, please visit www.multifittings.com. Solvent cemented joints shall be assembled as shown in the Multi Fittings Installation Guide.

FEATURES & BENEFITS

Leak-Proof Joints

Properly installed SDR35 solvent weld sewer fittings provide leak-proof joints. This eliminates underground water infiltration and exfiltration. The results: substantial savings in sewage treatment costs for municipalities.

Superior Chemical Resistance

The chemical resistance of SDR35 sewer fittings is exceptional. Acids, alkalies and normally diluted hydrocarbons have little or no effect. Aggressive soil conditions due to sulfates, carbonates, industrial effluents and acid rain are easily handled by SDR35 solvent weld sewer fittings.

Super Abrasion Resistance

SDR35 solvent weld sewer fittings are highly resistant to abrasion, making them ideal for transporting abrasive effluent, even in high velocity storm sewer systems.

Applicable Standards

ASTM D2665 (6" & 8")

NSF 14 (6" & 8")

CSA B181.2 (6" & 8")

IAPMO File 2431 (3" & 4")

MULTI FITTINGS

Telephone: 519 681-2140

Toll Free: 800 265-1815

Fax: 519 681-2156

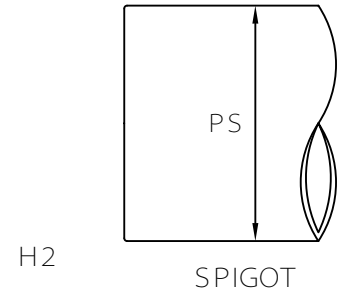
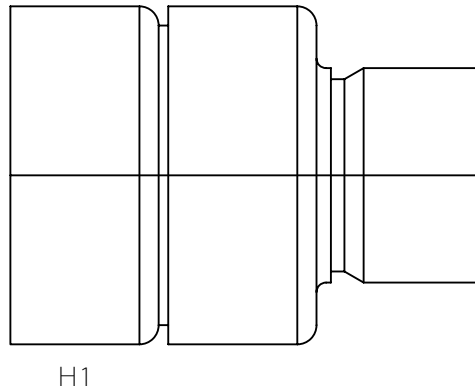
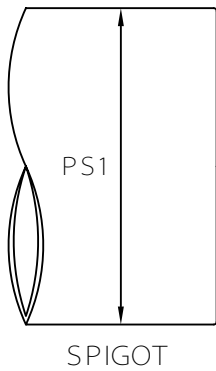


MULTI FITTINGS

LAYING LENGTH

ISSUE DATE: NOV 15/17
SUPERCEDES: MAY 10/05

INCREASER COUPLING (HxH)



FABRICATED FITTING (F)

	PS1	SIZE H1xH2	PART NUMBER	N REF	PS
F	SEW - 8.400	8x4	040610	-	SEW - 4.215
F	SEW - 10.500	10x4	040613	-	SEW - 4.215
F	SEW - 10.500	10x6	040614	-	SEW - 6.275
F	SEW - 12.500	12x4	040616	-	SEW - 4.215
F	SEW - 12.500	12x6	040617	-	SEW - 6.275
F	SEW - 12.500	12x10	040619	-	SEW - 10.500
F	SEW - 15.300	15x4	040620	-	SEW - 4.215
F	SEW - 15.300	15x6	040621	-	SEW - 6.275
F	SEW - 15.300	15x8	040622	-	SEW - 8.400
F	SEW - 18.701	18x10	040101	6.000	SEW - 10.500
P	SEW - 24.803	24x18	040086	-	SEW - 18.701