

# TRENCH TOUGH PLUS™

## SDR26 HEAVY WALL GASKETED SEWER FITTINGS

- Compatible with SDR26 and SDR35 sewer pipe and are used in areas where the installation conditions are more challenging, such as deep burial applications or projects in poor soils.
- Service fittings are manufactured with an "extra heavy wall" SDR24 thickness.
- Easily identifiable with its gray gaskets.

Injection  
Molded  
4" – 12"

Fabricated  
12" – 24"



### NEW MOLDED GASKETED SDR26 HEAVY WALL SEWER FITTINGS

Product	Size (inches)	Size (mm)	Old Part #	NEW Part #
T-Y (GXGXG)	10 x 4	250 x 100	067130	167130
	10 x 6	250 x 150	067150	167150
	12 x 4	300 x 100	067153	167153
	12 x 6	300 x 150	067152	167152

## Short Form Specification

All sewer fittings shall comply with the ASTM D3034 and ASTM F1336 standards. Fittings marked with IAPMO are approved to the requirements of D3034 and are third party certified to CSA, B182.1 and marked with the CSA logo.

Fitting joints must withstand a minimum 15 psi hydrostatic pressure and a -10.8 psi vacuum pressure for at least 10 minutes with no leakage while joint is deflected 5° and ring deflection is 5%.

Impact testing is carried out at 73°F with no cracking or splitting allowed.

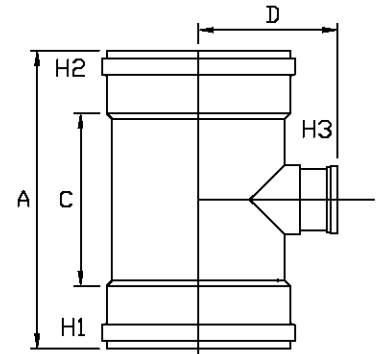
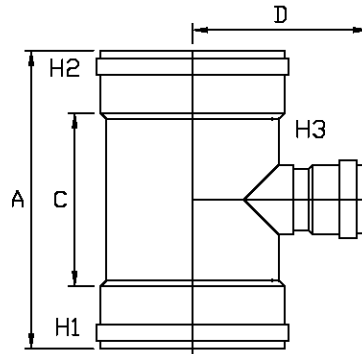
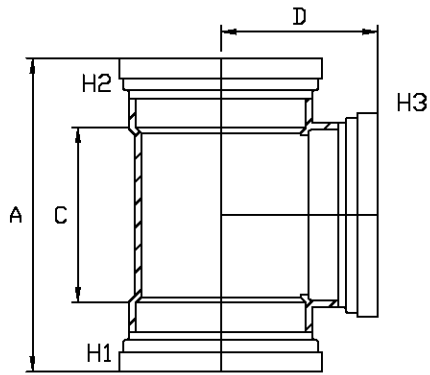


MULTI FITTINGS

# LAYING LENGTH

ISSUE DATE: OCT 30/17  
SUPERCEDES: SEPT 14/07

## TEE (GxGxG)



INJECTION MOLDED FITTING (M)    FABRICATED FITTING (F)    FABRICATED FITTING (F1)

	SIZE H1xH2xH3	PART NUMBER	A REF	C REF	D REF
M =	4x4x4	067004	8. 625	4. 500	4. 375
P =	6x6x4	067026	-	-	-
M =	6x6x6	067006	12. 500	6. 625	6. 250
M =	8x8x4	067028	13. 500	6. 750	6. 500
M =	8x8x6	067048	13. 500	6. 750	7. 375
M =	8x8x8	067008	15. 750	8. 875	7. 875
F @	10x10x4	067030	-	-	-
F1 @	10x10x6	067031	30. 000	20. 375	10. 000
F1 @	10x10x8	067032	36. 000	-	10. 750
F @	10x10x10	067029	36. 000	26. 375	14. 000
F1 @	12x12x4	067060	30. 000	-	10. 000
F1 @	12x12x6	067037	30. 000	19. 500	10. 750
F1 @	12x12x8	067036	36. 000	-	12. 000
F @	12x12x10	067062	-	-	-
F @	12x12x12	067035	36. 000	25. 500	16. 500
F1 @	15x15x4	067070	39. 000	-	12. 000
F1 @	15x15x6	067071	39. 000	-	12. 500
F1 @	15x15x8	067072	39. 000	-	14. 000
M =	15x15x10	067147	25. 750	16. 375	12. 000
M =	15x15x12	067146	25. 750	16. 375	12. 500
M =	15x15x15	067145	25. 750	16. 375	12. 875

Note: = Refer to Page HW4 for Hub Detail, Type A  
 @ Refer to Page HW5 for Hub Detail, Fabricated  
 F1 has Molded hub in branch