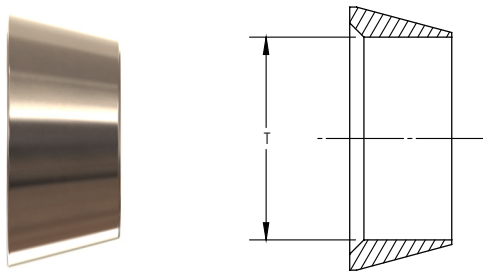


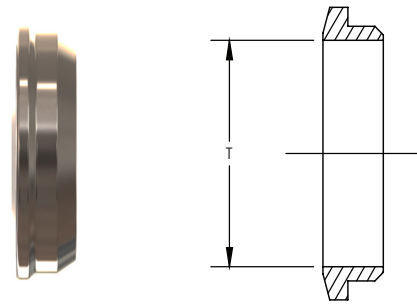
# Collets

## Ferrule



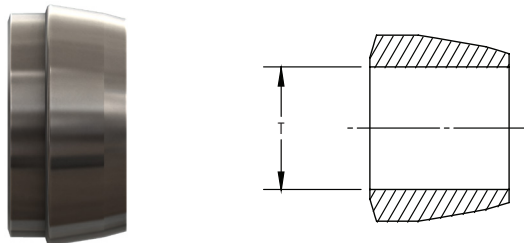
CBC PART NUMBER	INTERCHANGES WITH	T TUBE O.D.
DFC-1	103-1 1FF1	1/16
DFC-2	203-1 2FF2	1/8
DFC-3	303-1 3FF3	3/16
DFC-4	403-1 4FF4	1/4
DFC-5	503-1 5FF5	5/16
DFC-6	603-1 6FF6	3/8
DFC-8	813-1 8FF8	1/2
DFC-10	1013-1 10FF10	5/8
DFC-12	1213-1 12FF12	3/4
DFC-14	1413-1 14FF14	7/8
DFC-16	1613-1 16FF16	1

**NOTE:** Dimensions subject to change, to be used for reference only.



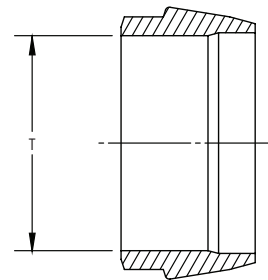
CBC PART NUMBER	INTERCHANGES WITH	T TUBE O.D.
DRC-1	104-1 1BF1	1/16
DRC-2	204-1 2BF2	1/8
DRC-3	304-1 3BF3	3/16
DRC-4	404-1 4BF4	1/4
DRC-5	504-1 5BF5	5/16
DRC-6	604-1 6BF6	3/8
DRC-8	814-1 8BF8	1/2
DRC-10	1014-1 10BF10	5/8
DRC-12	1214-1 12BF12	3/4
DRC-14	1414-1 14BF14	7/8
DRC-16	1614-1 16BF16	1

**NOTE:** Dimensions subject to change, to be used for reference only.



CS PART NUMBER	INTERCHANGES WITH	T TUBE O.D.
SC-1	1 TZ	1/16
SC-2	2 TZ	1/8
SC-3	3 TZ	3/16
SC-4	4 TZ	1/4
SC-5	5 TZ	5/16
SC-6	6 TZ	3/8
SC-8	8 TZ	1/2
SC-10	10 TZ	5/8
SC-12	12 TZ	3/4
SC-14	14 TZ	7/8
SC-16	16 TZ	1

**NOTE:** Dimensions subject to change, to be used for reference only.



## COMPONENT REPLACEMENT PARTS

Collet sets and Nut/Collet sets make for easy storage and handling of nuts and collets. CBC-Lok® & CS-Lok® components are precision made and should be handled with care. The components can be ordered on an arbor, which aids in careful handling and prevents them from coming off. Pinch the end of the arbor to release the components.