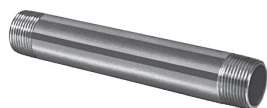


Rev. 4-20 Shaded area indicates changes

**H-10887****Brass meter idler**

Has same end-to-end and thread dimensions as meter. Used to continue service during meter repairs

Catalog size	5/8"	5/8" x 3/4"	3/4"	1"
Cover size	5/8"	5/8" x 3/4"	3/4"	1"
Length	7-1/2"	7-1/2"	9"	10-3/4"
Meter thread size	3/4"	1"	1"	1-1/4"

**H-14338****Brass locking device (padlock and valve not included)**

For use on Mueller® MARK II ORISEAL® Meter Valves - cannot be used on valves having angle lever handles.

Catalog size	3/4"	1"
--------------	------	----

**Water meter increaser**

Used on threaded ends of 5/8" meter to increase threads to 5/8 x 3/4 or 3/4 meter size (1" thread)

H-10888: for plain nuts

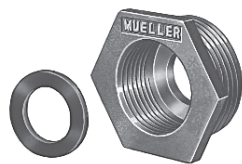
H-10888-99002: for saddle nuts

H-10888N**H-10888N-02**

Catalog size	5/8" x 3/4"	5/8" x 3/4"
Meter size	5/8"	5/8"
Length	11/16"	1"

**H-11091****H-11092****Lock wing sealing device**

This device is used to detect unauthorized use of valve or stop. Used with lock wings drilled 3/8" or 1/2". The H-11090 is made up of a collar and set screw (H-11091) and a pin (H-11092). The pin is available in 3/8" or 1/2" sizes and the collar with set screw is used on both sizes.

**H-11090****Meter bushing with rubber washer**

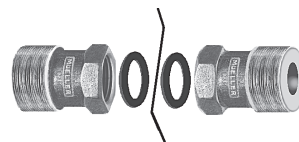
Used on threaded ends of 5/8 x 3/4 or 3/4 meters to adapt to 1" meter thread size (1-1/4")

H-10889: for saddle nuts

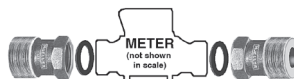
H-10889-99000: for plain nuts

H-10889N**H-10889N-00**

Catalog size	3/4" x 1"	3/4" x 1"
Meter size	5/8" x 3/4", 3/4"	5/8" x 3/4", 3/4"
Length	1-1/4"	15-16"

**Meter bushing with rubber washer (complete for both ends)**

Used on threaded ends of 5/8x3/4 meter to adapt to 1" meter thread size (1-1/4") and standard length.

**H-10879N**

Catalog size	5/8" x 3/4"	5/8" x 1"	5/8" x 3/4" x 1"	3/4" x 1"	5/8" x 3/4" x 3/4"	1" x 1 1/2"	1" x 2"	1 1/2" x 2"
Meter size	5/8"	5/8"	5/8" x 3/4"	3/4"	5/8" x 3/4"	1"	1"	1 1/2"
Length	1.019"	2.062"	2.062"	1.13"	1.019"	1"	3"	1.875"

**H-10893****Meter coupling washer**

H-10893: Fiber washer

**H-10895****Meter coupling washer**

H-10895: Rubber washer

Catalog size	5/8"	3/4"	1"	1-1/4"	1-1/2" **	2" **
Meter size	5/8"	5/8" x 3/4", 3/4"	1"	1-1/4"	1-1/2"	2"

Catalog size	5/8"	3/4"	1"	1-1/4"	1-1/2" **	2" **
Meter size	5/8"	5/8" x 3/4", 3/4"	1"	1-1/4"	1-1/2"	2"

** Flange gasket for 1-1/2" and 2" sizes.

** Flange gasket for 1-1/2" and 2" sizes.