

## FIGURE LBB LUGGED BUTTERFLY VALVE BOLT PACKS

**Features**

- 150# Flanges Only
- Bolt Quantities for Two Flanges
- Carbon Steel Material
- Zinc Plated
- Sizes 2" to 12"

**Standards**

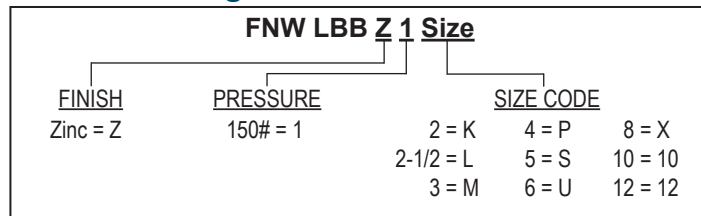
- Material: ASTM A307 Grade A
- Dimensions: ASME B18.2.1

**Specifications**

- Tensile: 60 KSI Minimum
- Elongation: 18% Minimum
- Rockwell Hardness: 69-100Rb



**Figure Number Matrix**



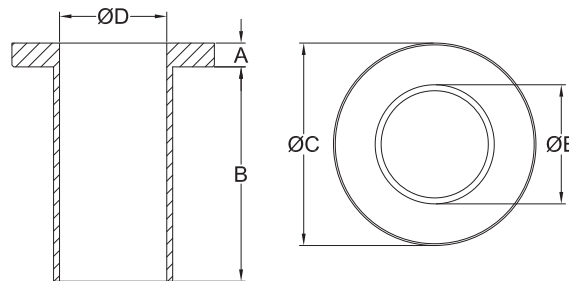
## FIGURE CBI BOLT INSULATORS

**Features**

- Sold Individually
- Manufactured in Nylon Material
- White in Color
- For Electrical Isolation Between Flanges and Flange Bolts
- Sizes 1/2", 5/8" and 3/4"

**Specifications**

- Material: Mineral Reinforced Nylon 66 Resin, Minlon® 10B40 NC010
- Tensile: 13, 053 PSI (ASTM D638)
- Elongation: 2.5% (ASTM D638)
- Heat Deflection Temperature:
  - 66 PSI - 482°F (ASTM D648)
  - 264 PSI - 428°F (ASTM D648)
- Melting Point: 504°F (ASTM D3418)
- Specific Gravity: 1.51 (ASTM D792)



**Dimensions (inches)**

Size	A	B	ØC	ØD	ØE
1/2	0.16	1.03	1.14	0.53	0.59
5/8	0.17	1.13	1.32	0.66	0.72
3/4	0.16	1.59	1.57	0.78	0.84



**Figure Number Matrix**

